



NPDES Small MS4 General Permit (OHQ000002) Annual Reporting Form

Instructions for completing this form:

- OHQ000002 requires that this form be used when submitting annual reports. You may request approval to use your own reporting format.
- Annual Reports are due annually on or before April 1st.
- Complete the form and sign and date the certification statement below.
- If more space is needed than is provided, identify within the provided space that Attachment A, B, C, etc. has been attached.
- If an item of the form is not applicable for your program (such as street sweeping), fill in N/A in the space provided.
- Don't include attachments such as brochures, newspaper clips, sign-in sheets, etc. related to your program with this form. You only need to summarize these within this report. These records must be filed and will be needed during program audits.
- When complete, submit this Annual Report form to the following address:
Ohio Environmental Protection Agency
Division of Surface Water
Storm Water Program – Small MS4
P.O. Box 1049
Columbus, Ohio 43216-1049

Small MS4 Annual Report for Year: 2009		
Ohio EPA Facility Permit Number: 1GQ00051*AG		
Name of MS4: Butler County Storm Water District		
Primary Contact: Gregory J. Wilkens, P.E., P.S.		Title: Storm Water Engineer
Mailing Address: 1921 Fairgrove Avenue		
City: Hamilton	Zip Code: Ohio	County: Butler
Telephone Number: 513-867-5744	Email Address: wilkengs@bceo.org	

Include or attach a Table of Organization. Indicate who (name and contact information) is responsible for overall management and implementation of your program, and if different, each minimum control measure of your program. Identify how development and implementation across multiple positions, agencies and departments occur. Also, identify any Memorandum of Understandings (MOUs) or other such agreements that exist.

- Attachment "A" - Organizational Chart
- Attachment "B" - Applicable Sites for Construction Site Runoff Control
- Attachment "C" - Bonus Activities

I certify under penalty of law that this document and all attachments were prepared under my direction or supervision in accordance with a system designed to assure that qualified personnel properly gather and evaluate the information submitted. Based on my inquiry of the person or persons who manage the system, or those persons directly responsible for gathering the information, the information submitted is, to the best of my knowledge and belief, true, accurate and complete. I am aware that there are significant penalties for submitting false information, including possibility of fine and imprisonment for knowing violations.

Print Name: Gregory J. Wilkens, P.E., P.S.

Print Title: Storm Water Engineer

Signature: _____

Date: March 30, 2010



PUBLIC EDUCATION & OUTREACH

Estimate Your Permit Area's Total Population: 144,795

BMP (mechanism) & Responsible Party	Measurable Goal	Theme or Message	Target Audience	% of Target Audience Reached	Summary of Results	Effective (Yes or No)
Media Awareness Packet Butler County Storm Water District	Annually prepare at least one Press Release Packet and distribute to local media	Watershed Awareness & Water Quality	General Public	Potential audience in Greater Cincinnati region of 1,727,223.	The Butler County Storm Water District has partnered with the Regional Storm Water Collaborative and local media agents to create a television advertising campaign informing residents of illicit discharge and non-point source pollution issues. During May 2009, WCPO Channel 9 aired thirty-eight; 30second ads that addressed individual impacts on water quality. Potential regional audience of 1,727,223.	Yes
Media Awareness Packet Butler County Storm Water District	Annually prepare at least one Press Release Packet and distribute to local media	Watershed Awareness & Water Quality	General Public	Average daily traffic count for a single billboard was 11,500. Campaign utilized 24 billboards at various times during a six month period.	The Butler County Storm Water District conducts an annual outdoor billboard advertising campaign. The boards delivers the messages such as "storm drains are not garbage cans" and "You Dump it, You Drink It". The message prompts people to report pollution to the storm water hotline number. At a minimum, eight boards are placed throughout the county during a single showing. Billboards are also used to highlight public involvement activities such as the Clean Sweep of the Great Miami River and Great Miami River Days festival. From April – September 2009, 24 billboards were posted .	Yes



<p>Education Program for Local Schools</p>	<p>Adopt and Distribute K-12 Water Curricula Program</p>	<p>Watershed Awareness & Water Quality</p>	<p>Students: grades K-12</p>	<p>100 classroom programs reached 2449 students and 138 adults.</p>	<p>This year the Butler Soil and Water Conservation District conducted 100 education programs within NPDES Phase II affected areas in Butler County. The Butler Soil and Water Conservation District offers programs and resources to local schools/groups. Full day workshops and introductory programs for the following programs are available: Project WET (Water Education for Teachers), Project WILD Aquatics, stream walks, stream monitoring, and On the Trail of Non-Point Pollution Sources.</p>	<p>Yes</p>
<p>Butler Soil & Water Conservation District</p>						
<p>Education Program for Local Schools</p>	<p>Adopt and Distribute K-12 Water Curricula Program</p>	<p>Watershed Awareness & Water Quality</p>	<p>Students: grades K-12</p>	<p>336 presentations reached 8,236 students.</p>	<p>The Butler County Department of Water and Sewer provides a variety of educational programs to school districts within Butler County. During 2009, the environmental educator made 336 presentations relating to water quality, litter prevention, waste reduction, recycling, conservation, environmental stewardship and pollution reduction that reached over 8,236 students.</p>	<p>Yes</p>
<p>Butler County Department of Water and Sewer</p>						
<p>Education Workshop</p>	<p>Adopt and Distribute K-12 Water Curricula Program</p>	<p>Soils Science & Sediment Erosion Control Issues</p>	<p>3rd Grade Teachers</p>	<p>10 people</p>	<p>Soils Workshop presented to 3rd Grade teachers. All materials presented were aligned with State of Ohio standards for Science and Social Studies.</p>	<p>Yes</p>
<p>Butler Soil & Water Conservation District</p>						



<p>Education Workshop</p>	<p>Adopt and Distribute K-12 Water Curricula Program</p>	<p>Water Quality Testing</p>	<p>4th Grade Teachers</p>	<p>22 people</p>	<p>The Butler Soil and Water Conservation District held a Southwest Ohio Science Institute (SOSI) Level 2 workshop for the 4th grade. The focus of the event was water quality testing. Conducted through Miami University's Discovery Center, SOSI consists of one and two week summer workshops and online follow-up with iDiscovery during the academic year. The workshops help participants deepen their science content knowledge and gain confidence in using hands-on, inquiry based teaching methods.</p>	<p>Yes</p>
<p>Butler Soil & Water Conservation District</p>						
<p>Storm Drain Labeling</p>	<p>Purchase and coordinate installation of 300 labels per year until all labels are marked.</p>	<p>Hazards of Illicit Discharge</p>	<p>Homeowners and General Public</p>	<p>Three hundred twenty four (324) storm drain labels installed on catch basins and illicit discharge information distributed to houses by community volunteers.</p>	<p>Storm drain labels are simple and effective best management practices to prevent non-point source pollution from entering waterways in our community and those downstream. The labels are intended to make urban and suburban homeowners think twice before dumping material down the storm sewers and into rivers, streams, and ponds in their neighborhoods.</p>	<p>Yes</p>
<p>Butler Soil & Water Conservation District</p>						
<p>BONUS ACTIVITIES</p>	<p>N/A</p>	<p>SEE ATTACHMENT "C"</p>	<p>This list contains activities that not specifically required by permit or listed as part of the District's Storm Water Management Plan.</p>			
<p>Butler County Storm Water District</p>						

PUBLIC EDUCATION & OUTREACH

- Summarize activities you plan to undertake during the next reporting cycle.

BMP (mechanism) & Responsible Party	Measurable Goal	Theme or Message	Target Audience	% of Target Audience to be Reached	Summary of Planned Activities	Proposed Schedule
<p>Media Awareness</p> <p>Butler County Storm Water District</p>	Annually prepare at least one Press Release Packet and distribute to local media	Nutricification	General Public	Dependent on reach of selected media.	Promote public education theme utilizing billboard advertising	Various months throughout the year.
<p>Media Awareness</p> <p>Butler County Storm Water District</p>	Annually prepare at least one Press Release Packet and distribute to local media	Various themes which may include, and are not limited to; water quality, litter prevention, waste reduction, recycling, conservation, environmental stewardship and pollution reduction	General Public	Dependent on reach of selected media.	Contract with StormCenter Inc. and local television network to provide regular television spots and Public Service Announcements	TBD, Currently negotiating contract with StormCenter, Inc.
<p>Education Program for Local Schools</p> <p>Butler Soil & Water Conservation District; Butler County Department of Water and Sewer</p>	Provide K-12 Water Curricula Program	Various themes which may include, and are not limited to; water quality, litter prevention, waste reduction, recycling, conservation, environmental stewardship and pollution reduction	School Children K-12	Dependent on requests for programs	Provide a variety of educational programs to school districts within Butler County.	Provide programs as requested throughout the school year.
<p>Storm Drain Labeling</p> <p>Butler Soil & Water Conservation District</p>	Purchase and coordinate installation of 300 labels per year until all labels are marked.	Hazards of Illicit Discharge	Homeowners and General Public	Dependent on number of labels installed and number of houses receiving illicit discharge information door hangers.	Utilize neighborhood volunteers to install storm drain labels and distribute information to residential properties on hazards of illicit discharge	Throughout the year as weather permits.



PUBLIC INVOLVEMENT/PARTICIPATION

BMP (Activity) & Responsible Party	Measurable Goal	Theme or Message	Target Audience	Estimate of People Participated	Summary of Results	Effective (Yes or No)
Public Meetings Butler County Storm Water District	Hold two public meetings and one citizen discussion panel per year until Program is implemented.	District Open House	General Public	Approx. 5,000 people. (Butler County Fair average attendance is around 100,000 people.)	The Butler County Storm Water District presented a week long open-house forum at the Butler County Fair to allow the public an opportunity review and discuss the Butler County Storm Water Management Plan and the Annual Report. Informational brochures were also distributed about Non-point Source Pollution and Illicit Discharges.	Yes
Public Meetings Butler County Storm Water District	Hold two public meetings and one citizen discussion panel per year until Program is implemented.	Illicit Discharge Detection and Elimination	General Public	Approximately 20 people	A public hearing was held to establish the purpose and need for the adoption of a county wide Illicit Discharge Detection and Elimination regulation. At the conclusion of the presentation, the regulation was unanimously approved by the County Commissioners.	Yes
Public Meetings Butler County Storm Water District	Hold two public meetings and one citizen discussion panel per year until Program is implemented.	Butler County Storm Water District Annual Meeting	Butler County Storm Water District Co-permittees	19 People	The annual meeting scheduled for December 2009 was postponed one month in preparation for adoption of a new District public presentation/meeting schedule. In December of 2009, the District decided to forego lengthy, formal annual meetings and adopt a new format of informal quarterly updates. This change is intended to make meetings more accessible to co-permittees and facilitate the distribution of District information in a timely fashion. The first meeting utilizing the new format was held January 28, 2010.	Yes



<p>Public Meetings</p>	<p>Hold two public meetings and one citizen discussion panel per year until Program is implemented.</p>	<p>Flood Risk Information Open House</p>	<p>General Public including property owners, realtors, lenders and insurance agents</p>	<p>100 people</p>	<p>Representatives from several local, state and federal agencies will provide the most current information about flood risk, flood insurance, floodplain development regulations, and the process for floodplain mapping within Butler County.</p>	<p>Yes</p>
<p>Butler County Storm Water District</p>						
<p>Butler County Stream Team</p>	<p>Facilitate and oversee one Stream Clean-Up and Monitoring Program each year.</p>	<p>Volunteers collect data and monitor stream health</p>	<p>General Public and Students</p>	<p>The Stream Team averages 88 samples a month and 16 volunteers. Over the course of the year 54 different people have volunteered.</p>	<p>The Butler County Storm Water District teamed up with Miami University Institute for Environmental Science and the Butler Soil and Water Conservation District to promote and implement a monthly volunteer stream monitoring program to assess local stream quality. A protocol for the lab and field procedures was prepared and submitted to the Ohio EPA Credible Data Program. The Stream Team averages 88 samples a month and 16 volunteers. Over the course of the year 54 different people have volunteered. There are 20 fixed locations from watersheds throughout Butler County and the remainder of the samples come from locations chosen by volunteers. When samples are returned to the lab, they are analyzed for six parameters: nitrates, phosphates, bacteria, conductivity, total dissolved solids, pH, and turbidity. For more information concerning the Butler County Stream Team, visit : www.butlercountystreamteam.org</p>	<p>Yes</p>
<p>Butler County Storm Water District</p>						



<p>Stream Walks Butler Soil & Water Conservation District</p>	<p>Facilitate and oversee one Stream Clean-Up and Monitoring Program each year.</p>	<p>Water Quality, Stream Ecology, Watershed Awareness</p>	<p>School Children and Teachers</p>	<p>431 children and 60 adults</p>	<p>The Butler Soil and Water Conservation District conducted 7 challenging, yet entertaining, educational stream and/or wetland walks for 431 children and 60 adults. Topics included water quality (chemical, biological, physical attributes) stream ecology, stream attributes, and watershed mapping.</p>	<p>Yes</p>
<p>Clean Sweep of the Great Miami River Butler County Storm Water District</p>	<p>Facilitate and oversee one Stream Clean-Up and Monitoring Program each year.</p>	<p>Litter Prevention</p>	<p>General Public</p>	<p>210 Participants in Butler County; 525 participants overall.</p>	<p>On May 2nd over 525 volunteers participated watershed wide in the "Clean Sweep of the Great Miami River" – an effort to clean up the entire 170-mile river in one weekend. In the Butler County area, 210 participants collected 9.3 tons of litter and 200 tires at six sites long the Great Miami River in Butler County.</p>	<p>Yes</p>
<p>Storm Water Hotline, Database and Response Program Butler County Storm Water District</p>	<p>Document Complaints Received and Follow up in a timely manner.</p>	<p>Illicit Discharge, Illegal Dumping; Drainage; Sanitary; HSTS; Erosion; Other</p>	<p>General Public</p>	<p>159 customer inquiries for the year 2009.</p>	<p>The Butler County Storm Water District created a database and response program to document citizen inquiries/complaints and accurately record contact information. The database and response program recorded over 159 customer inquiries for the year 2009. The database tracks information specific to the customers address, method of contact, nature of inquiry, and detail of inquiry/complaint resolution. Average response and resolution time is 7 days.</p>	<p>Yes</p>
<p>BONUS ACTIVITIES Butler County Storm Water District</p>	<p>N/A</p>	<p>SEE ATTACHMENT "C"</p>	<p>This list contains activities not specifically required by permit or listed as part of the District's Storm Water Management Plan.</p>			



PUBLIC INVOLVEMENT/PARTICIPATION

- Summarize activities you plan to undertake during the next reporting cycle.

BMP (Activity) & Responsible Party	Measurable Goal	Theme or Message	Target Audience	Estimate of People to Participate	Summary of Planned Activities	Proposed Schedule
Public Meetings Butler County Storm Water District	Hold two public meetings and one citizen discussion panel per year until Program is implemented.	NPDES phase II program information	General Public	As many as event will accommodate.	Utilize a variety of public meeting formats to engage the public such as open house, public hearings, annual meetings, etc.	Various times throughout the year.
Butler County Stream Team Butler County Storm Water District	Facilitate and oversee one Stream Clean-Up and Monitoring Program each year.	Volunteers collect data and monitor stream health	General Public and Students	Dependent on number of volunteers	Meet monthly with volunteer stream monitors to assess local stream quality.	Monthly
Clean Sweep of the Great Miami River Butler County Storm Water District	Facilitate and oversee one Stream Clean-Up and Monitoring Program each year.	Litter Prevention	General Public	Dependent on number of volunteers	Coordinate clean-up of Great Miami River at multiple sites in Butler County.	Annual
Storm Water Hotline, Database and Response Program Butler County Storm water District	Document Complaints Received and Follow up in a timely manner.	Illicit Discharge, Illegal Dumping; Drainage; Sanitary; HSTS; Erosion; Other	General Public	Dependent on caller volume.	Track information specific to the customers address, method of contact, nature of inquiry, and detail of inquiry/complaint resolution. Respond and resolve complaint in a timely manner.	Daily



ILLICIT DISCHARGE DETECTION & ELIMINATION (IDDE)

BMP & Responsible Party	Measurable Goal	Completed (Yes or No)	Cite Local Code(s) Being Used (If available, web link for code(s))	Summary of Results or Activities	Effective (Yes or No)
Ordinance or Other Regulatory Mechanism Butler County Storm Water District	Establish Illicit Discharge Ordinance for District; implement and enforce.	Yes	Butler County Illicit Discharge Detection and Elimination Regulations (Resolution No. 09-11-1954)	On November 12, 2009, the Butler County Board of Commissioners signed and adopted the Illicit Discharge Detection and Elimination Regulations. The final draft is available on the District website: www.stormwaterdistrict.org	Yes
BMP & Responsible Party	Measurable Goal	Completed (Yes or No)	Summary of Activities or Updates		Effective (Yes or No)
Storm Sewer System Map Butler County Storm Water District	Update Storm Sewer Map Annually.	Yes	Using "As-Built" data originating from the 1970's and forward, 100% of known sewer systems have been mapped in the Phase II affected areas within the county. Each year as new development occurs throughout the District, the sewer map will be reviewed and updated.		Yes
BMP & Responsible Party	Measurable Goal	Completed (Yes or No)	Summary of Activities or Updates		Effective (Yes or No)
HSTS Mapping and List Butler County Storm Water District	Update HSTS Map Annually	Yes	The Butler County Storm Water District researched archived HSTS records held by the Butler County Health Department. The information can be viewed graphically with the use of the county GIS system. A map has been made identifying existing HSTS within the District. Updates are made on an annual basis. All new applications for HSTS will be added to that data.		Yes
BMP & Responsible Party	Measurable Goal	Completed (Yes or No)	Summary of Activities or Updates		Effective (Yes or No)
IDDE Plan Butler County Storm Water District	Develop and implement IDDE plan	Yes	By creating and adopting an illicit discharge regulation, the Storm Water District has established the methods and standards for best management practices (BMPs) for controlling the introduction of pollutants into the municipal separate storm sewer system. The regulation establishes the authority and means by which the District will carry out inspection, monitoring and enforcement procedures necessary to ensure compliance. The Butler County Storm Water District created a database and response program to document and accurately record contact information regarding spill reports, illicit discharges, illegal dumping, and citizen complaints. The information obtained from the hotline and database can be mapped with the use of the county GIS system. Problem areas can be viewed graphically based on type, location, and frequency. This database is updated on a regular basis to help identify and resolve problem areas.		Yes



BMP & Responsible Party	Measurable Goal	Completed (Yes or No)	# of Outfalls Screened	# of Dry-Weather Flows Identified	# Of Illicit Discharges:		Effective (Yes or No)
					Identified*	Eliminated	
Dry-Weather Screening of Outfalls Total # of Outfalls <u>3221</u>	Inspect 400 mapped outfalls and sample when necessary	Yes	400	12	0	n/a	Yes
Butler County Storm Water District							
BONUS ACTIVITIES Butler County Storm Water District	N/A	SEE ATTACHMENT "C"	This list contains activities not specifically required by permit or listed as part of the District's Storm Water Management Plan.				

*Include an attachment which provides schedules for elimination of illicit connections that have been identified but have yet to be eliminated.

ILLCIT DISCHARGE DETECTION & ELIMINATION (IDDE)

- Summarize activities you plan to undertake for the next reporting cycle.

BMP & Responsible Party	Measurable Goal	Summary of Planned Activities	Proposed Schedule
Ordinance or Other Regulatory Mechanism Butler County Storm Water District	Continue to implement and enforce IDDE regulation.	Review IDDE regulation and update as needed.	Annually
Storm Sewer System Map Butler County Storm Water District	Update Storm Sewer Map Annually.	Each year as new development occurs throughout the District, the sewer map will be reviewed and updated.	Annually
HSTS Mapping and List Butler County Storm Water District	Update HSTS Map Annually	Updates are made on an annual basis. All new applications for HSTS will be added to that data.	Annually
IDDE Plan Butler County Storm Water District	Continue to implement IDDE plan	Review and update plan as needed.	Annually
Dry-Weather Screening of Outfalls Butler County Storm Water District	Inspect 400 mapped outfalls and sample when necessary	The Butler County Storm Water District (District) commissioned a second outfall mapping & screening project. Consultant will utilize the existing geodatabase, incorporate storm sewer feature information, identify new outfalls, dry weather screen outfalls, and sampling & testing of non-storm water flows as necessary.	Permit Year 2010



CONSTRUCTION SITE RUNOFF CONTROL

BMP & Responsible Party	Measurable Goal	Completed (Yes or No)	Cite Local Code(s) Being Used (If available, web link for code(s))		Summary of Results or Activities	Effective (Yes or No)
Ordinance or Other Regulatory Mechanism Butler County Storm Water District	Compliance with NPDES Construction General Permit requirements.	Yes	Butler County Subdivision Regulations		The Butler County Subdivision regulations were revised in March of 2007 to update sediment and erosion control requirements to current NPDES Construction General Permit requirements. This includes a permitted process with storm water pollution plan review for all parcels within the county.	Yes
BMP & Responsible Party	Measurable Goal	Completed (Yes or No)	Standards Being Used		Summary of Results or Activities	Effective (Yes or No)
Sediment and Erosion Control Requirements Butler County Storm Water District	Compliance with NPDES Construction General Permit requirements.	Yes	Erosion and Sediment Control Regulations: Article VII – Butler County Subdivision Regulations		Erosion and Sediment Control Regulations: Article VII were adopted as part of the of the Butler County Subdivision regulations on March 12, 2007. The changes were effective during the Summer of 2007. For more information, visit: http://www.butlerswcd.org/Urban/ESC.htm	Yes
BMP & Responsible Party	Measurable Goal	Completed (Yes or No)	Complaints		Summary of Results or Activities	Effective (Yes or No)
			Received	Followed-Up On		
Complaint Process Butler Soil & Water Conservation District	Respond to all complaints	Yes	6	6	Responded to and resolved all complaints.	Yes
BMP & Responsible Party	Measurable Goal	Completed (Yes or No)	# of Applicable Sites Requiring Plans	# of Plans Reviewed	Summary of Results or Activities	Effective (Yes or No)
Site Plan Review Procedures Butler Soil & Water Conservation District	Review all site plans for compliance	Yes	484	501 (includes reviewing resubmitted plans)	Made plan comments to ensure that all sites were in compliance with regulations.	Yes
BMP & Responsible Party	Measurable Goal	Completed	Site Inspections Performed		Summary of Results or Activities	Effective



		(Yes or No)	# of Applicable Sites	# Performed	Avg. Frequency		(Yes or No)
Site Inspection Procedures	Inspect all applicable sites for compliance	Yes	484	17,557	weekly	Inspected active sites for compliance with Erosion and Sediment control Regulations	Yes
Butler Soil & Water Conservation District							
BMP & Responsible Party	Measurable Goal	Completed (Yes or No)	Violations		Summary of Results or Activities	Effective (Yes or No)	
			# of Violation Letters	# of Enforcement Actions			
Enforcement Procedures	Ensure compliance with regulations.	Yes	2,643*	16*	Enforced compliance on all active sites. <i>*Violation and enforcement numbers are identical for construction and post construction because not currently tracked separately. Database will be changed in 2010 to track separately.</i>	Yes	
Butler Soil & Water Conservation District							

*Include an attachment which identifies applicable sites within your jurisdiction for this reporting period.

CONSTRUCTION SITE RUNOFF CONTROL

- Summarize activities you plan to undertake during the next reporting cycle.

BMP & Responsible Party	Measurable Goal	Summary of Planned Activities	Proposed Schedule
Ordinance or Other Regulatory Mechanism	Compliance with NPDES Construction General Permit requirements.	Review Federal and State rule changes and revise county regulations.	As needed.
Butler Soil and Water Conservation District			
Sediment and Erosion Control Requirements	Compliance with NPDES Construction General Permit requirements.	Review Federal and State rule changes and revise county regulations.	As needed.
Butler Soil and Water Conservation District			
Complaint Process	Respond to all complaints.	Respond to all complaints and ensure compliance with all regulations.	As needed.
Butler Soil and Water Conservation District			



Site Plan Review Procedures	Review all site plans for compliance	Continue to make plan comments to ensure that all sites were in compliance with regulations.	As needed.
Butler Soil and Water Conservation District			
Site Inspection Procedures	Inspect all applicable sites for compliance	Inspect active sites for compliance with Erosion and Sediment control Regulations	As needed.
Butler Soil and Water Conservation District			
Enforcement Procedures	Ensure compliance with regulations.	Enforce compliance on all active sites.	As needed.
Butler Soil and Water Conservation District			



POST-CONSTRUCTION STORM WATER MANAGEMENT IN NEW DEVELOPMENT AND REDEVELOPMENT

BMP & Responsible Party	Measurable Goal	Completed (Yes or No)	Cite Local Code(s) Being Used (If available, web link for code(s))		Summary of Results or Activities	Effective (Yes or No)
Ordinance or Other Regulatory Mechanism Butler County Storm Water District and Co-Permittees	Comply with post-construction requirements for NPDES phase II permit. (ie. Provide for open space, minimization of impervious area, protection of natural resources, etc.)	Yes	Butler County Subdivision Regulations Butler County Flood Damage Prevention Regulations Butler County Zoning Code Township Zoning Code (Fairfield, Liberty, St. Clair, , Wayne, West Chester) City of Trenton Subdivision Regulations and Zoning		All documents have been updated to include post construction requirements. Documents are reviewed as needed to ensure compliance.	Yes
BMP & Responsible Party	Measurable Goal	Completed (Yes or No)	Structural and/or Non-Structural Standards Being Used		Summary of Results or Activities	Effective (Yes or No)
Post-Construction Requirements Butler County Storm Water District and Co-Permittees	Comply with post-construction requirements for NPDES phase II permit.	Yes	Ohio EPA Construction General Permit requirements ODNR Rainwater and Land Development Manual ODOT Location and Design Manual Also, see above document list.		All documents have been updated to include post construction requirements. Documents are reviewed as needed to ensure compliance.	Yes
BMP & Responsible Party	Measurable Goal	Completed (Yes or No)	# of Applicable Sites Requiring Post-Const. BMPs	# of Plans Reviewed	Summary of Results or Activities	Effective (Yes or No)
Site Plan Review Procedures Butler County Storm Water District and Butler Soil and Water Conservation District	Review all sites required to obtain Ohio EPA Construction General Permit	Yes	14	14	Made plan comments to ensure that all sites were in compliance with regulations.	Yes
BMP & Responsible Party	Measurable Goal	Completed (Yes or No)	Site Inspections Performed		Summary of Results or Activities	Effective (Yes or No)
			# Performed	Avg. Frequency		
Site Inspection Procedures Butler County Storm Water District and Butler Soil and Water Conservation District	Inspect all sites that require post construction BMPs (ie. greater than 5 acres)	Yes	153	monthly	Inspected active sites for compliance with Erosion and Sediment Control Regulations.	Yes
BMP & Responsible Party	Measurable Goal	Completed (Yes or No)	Violations		Summary of Results or Activities	Effective (Yes or No)
			# of Violation Letters	# of Enforcement Actions		
Enforcement Procedures	Ensure compliance with	Yes	2,643*	16*	Enforced compliance on all active sites.	Yes



Butler County Storm Water District and Butler Soil and Water Conservation District	E&SC regulations.				**Violation and enforcement numbers are identical for construction and post construction because not currently tracked separately. Database will be changed in 2010 to track separately.	
BMP & Responsible Party	Measurable Goal	Completed (Yes or No)	# of Sites Requiring Plans/Agreements	# of Plans Developed/Agreements in Place	Summary of Results or Activities	Effective (Yes or No)
Long-Term O&M Plans/Agreements						
Butler County Storm Water District and Butler Soil and Water Conservation District	Ensure that facilities are either publicly owned and operated or a Home Owners Association or a Property Owners Association is established.	yes	14	14	The Butler County Engineers Office coordinates and plans inspections of all publicly owned and operated drainage structures within the District on an annual basis. Facilities and structures have maintenance performed as necessary based upon inspection results. A report is issued annually to the County commissioners on all inspection and maintenance activities.	Yes

POST-CONSTRUCTION STORM WATER MANAGEMENT IN NEW DEVELOPMENT AND REDEVELOPMENT

- Summarize activities you plan to undertake for the next reporting cycle.

BMP & Responsible Party	Measurable Goal	Summary of Planned Activities	Proposed Schedule
Ordinance or Other Regulatory Mechanism	Comply with post-construction requirements for NPDES phase II permit. (ie. Provide for open space, minimization of impervious area, protection of natural resources, etc.)	All documents will be updated to include post construction requirements. Documents are reviewed as needed to ensure compliance.	Annually
Butler County Storm Water District and Butler Soil and Water Conservation District			
Post-Construction Requirements	Comply with post-construction requirements for NPDES phase II permit.	All documents will be updated to include post construction requirements. Documents are reviewed as needed to ensure compliance.	Annually
Butler County Storm Water District and Butler Soil and Water Conservation District			



<p>Site Plan Review Procedures</p>	<p>Review all sites required to obtain Ohio EPA Construction General Permit</p>	<p>Make plan comments to ensure that all sites were in compliance with regulations.</p>	<p>Annually</p>
<p>Butler County Storm Water District and Butler Soil and Water Conservation District</p>			
<p>Site Inspection Procedures</p>	<p>Inspect all sites that require post construction BMPs (ie. greater than 5 acres)</p>	<p>Inspect active sites for compliance with Erosion and Sediment Control Regulations.</p>	<p>Annually</p>
<p>Butler County Storm Water District and Butler Soil and Water Conservation District</p>			
<p>Enforcement Procedures</p>	<p>Ensure compliance with E&SC regulations.</p>	<p>Enforce compliance on all active sites. Database will be changed in 2010 to track construction and post-construction violations separately.</p>	<p>Make changes by end of Permit Year 2010</p>
<p>Butler County Storm Water District and Butler Soil and Water Conservation District</p>			
<p>Long-Term O&M Plans/Agreements</p>	<p>Ensure that facilities are either publicly owned and operated or a Home Owners Association or a Property Owners Association is established.</p>	<p>The Butler County Engineers Office will continue to coordinate and plan inspections of all publicly owned and operated drainage structures within the District on an annual basis. Facilities and structures have maintenance performed as necessary based upon inspection results. A report is issued annually to the County commissioners on all inspection and maintenance activities.</p>	<p>Annually</p>
<p>Butler County Storm Water District and Butler Soil and Water Conservation District</p>			



POLLUTION PREVENTION/GOOD HOUSEKEEPING FOR MUNICIPAL OPERATIONS

BMP & Responsible Party	Measurable Goal	Completed (Yes or No)	Topic(s)	Targeted Audience	# of Employees Attended	Summary of Activity	Effective (Yes or No)
Employee Training Program	Establish plan for training and train 25% per year	Yes	Pollution Prevention; Good Housekeeping; Spill Prevention Control and Countermeasure Plans; Annual inspection and reporting requirements	Municipal Employees	84 Employees	PPGHP and SPCC plans were created and training was conducted for 16 municipal facilities.	Yes
Butler County Storm Water District							
List of Municipal Facilities Subject to Program					O&M Procedures Developed for Facilities (Yes or No)	# of Facility Inspections Performed	Frequencies of Such Inspections
<ol style="list-style-type: none"> 1. Butler County Engineer's Office 2. Butler County Regional Airport 3. City of Trenton 4. Fairfield Township (Morris Road) 5. Fairfield Township (Tylersville Road) 6. Hanover Township 7. Lemon Township 8. Liberty Township 9. Madison Township 10. Metroparks of Butler County 11. Ross Township 12. St. Clair Township 13. Village of New Miami 14. Village of Seven Mile 15. Wayne Township 16. West Chester Township 					Yes	10	Annual
MS4 Maintenance	Summarize Maintenance Activities and Schedules			Summarize Activities Performed			
	Maintenance activities are preformed on an as-needed basis.			The Butler County Engineers Office coordinates and plans inspections of all drainage structures within the District on an annual basis. Facilities and structures have maintenance performed as necessary based upon inspection results. A report is issued annually to the County commissioners on all inspection and maintenance activities.			
Disposal of Wastes	Procedures Developed (Yes or No)		Document Amounts of Wastes Properly Disposed				
	Yes		2200 gallons of automotive fluids recycled (ie. Transmission fluid, gear oil, engine oil)				
Road Salt	Covered (Yes or No)		Tons Used	Summarize Measures Taken to Minimize Usage			
	Yes		5,435	Salt usage minimized through the use of Standard Operating Procedures (SOPs) for snow and ice control. Further reductions are achieved with the use of the automated brine maker and distribution			



			tanks for pretreatment. Also investigated and experimented with beet juice as salt alternative.
Pesticide & Herbicide Usage	Procedures Developed (Yes or No)	Gallons Used	Summarize Measures Taken to Minimize Usage
	Yes	950	Butler County Engineers Office has developed and implemented Standard Operating Procedures (SOPs) for pesticide and herbicide application. All employees that participate in pesticide and herbicide application are licensed by the Ohio Department of Agriculture.
Fertilizer Usage	Procedures Developed (Yes or No)	Pounds Used	Summarize Measures Taken to Minimize Usage
	N/A	N/A	N/A
Street Sweeping	Procedures Developed (Yes or No)	Document Amount of Material Collected and Properly Disposed	
	Yes	Street sweeping as needed for county bridges and curb & gutter roads. Procedure in place for dewatering and disposal of collected waste. Currently procedures do not include a method to calculate and record the amount of material collected.	
Flood Management Projects	Summarize any New or Existing Flood Management Projects that were Assessed for Impacts on Water Quality		
	N/A		
BONUS ACTIVITIES	N/A	SEE ATTACHMENT "C"	This list contains activities that not specifically required by permit or listed as part of the District's Storm Water Management Plan.
Butler County Storm Water District			

POLLUTION PREVENTION/GOOD HOUSEKEEPING FOR MUNICIPAL OPERATIONS

- Summarize activities you plan to undertake for the next reporting cycle.

BMP & Responsible Party	Measurable Goal	Summary of Planned Activities	Proposed Schedule
Employee Training Program	Train 25% of municipal employees subject to program.	Continue to implement training component of facility PPGHP.	Annually
Butler County Storm Water District			
List of Facilities Subject to Program	List all facilities subject to Program.	Review existing list of facilities subject to program and make changes as needed.	Annually
Butler County Storm Water District			
MS4 Maintenance	Inspect drainage structures within the District on	Coordinate and plan inspections of drainage structures within the District on an annual basis.	Annually



Butler County Storm Water District	an annual basis.	Perform maintenance as necessary based upon inspection results. Issue report annually to the County commissioners on all inspection and maintenance activities.	
Disposal of Wastes	Gallons of oil properly recycled/recovered	Recycle oil.	Continuous.
Butler County Storm Water District			
Road Salt	Minimize salt usage	Minimize salt usage through the use of Snow and Ice control SOPs, use of brine pretreatment system and investigate salt alternatives.	Annually
Butler County Storm Water District			
Pesticide & Herbicide Usage	Minimize pesticide and herbicide usage	Continue to implement implemented Standard Operating Procedures (SOPs) for pesticide and herbicide application. Ensure employees obtain and maintain licensed by the Ohio Department of Agriculture license.	Annually
Butler County Storm Water District			
Fertilizer Usage	N/A	N/A	N/A
Butler County Storm Water District			
Street Sweeping	Properly dispose of and Document Amount of Material Collected	Develop and implement a method to calculate and record the amount of material collected.	Complete by the end of the permit cycle- 2014.
Butler County Storm Water District			
Flood Management Projects	N/A	N/A	N/A
Butler County Storm Water District			



PROPOSED CHANGES TO YOUR SWMP (IF ANY)

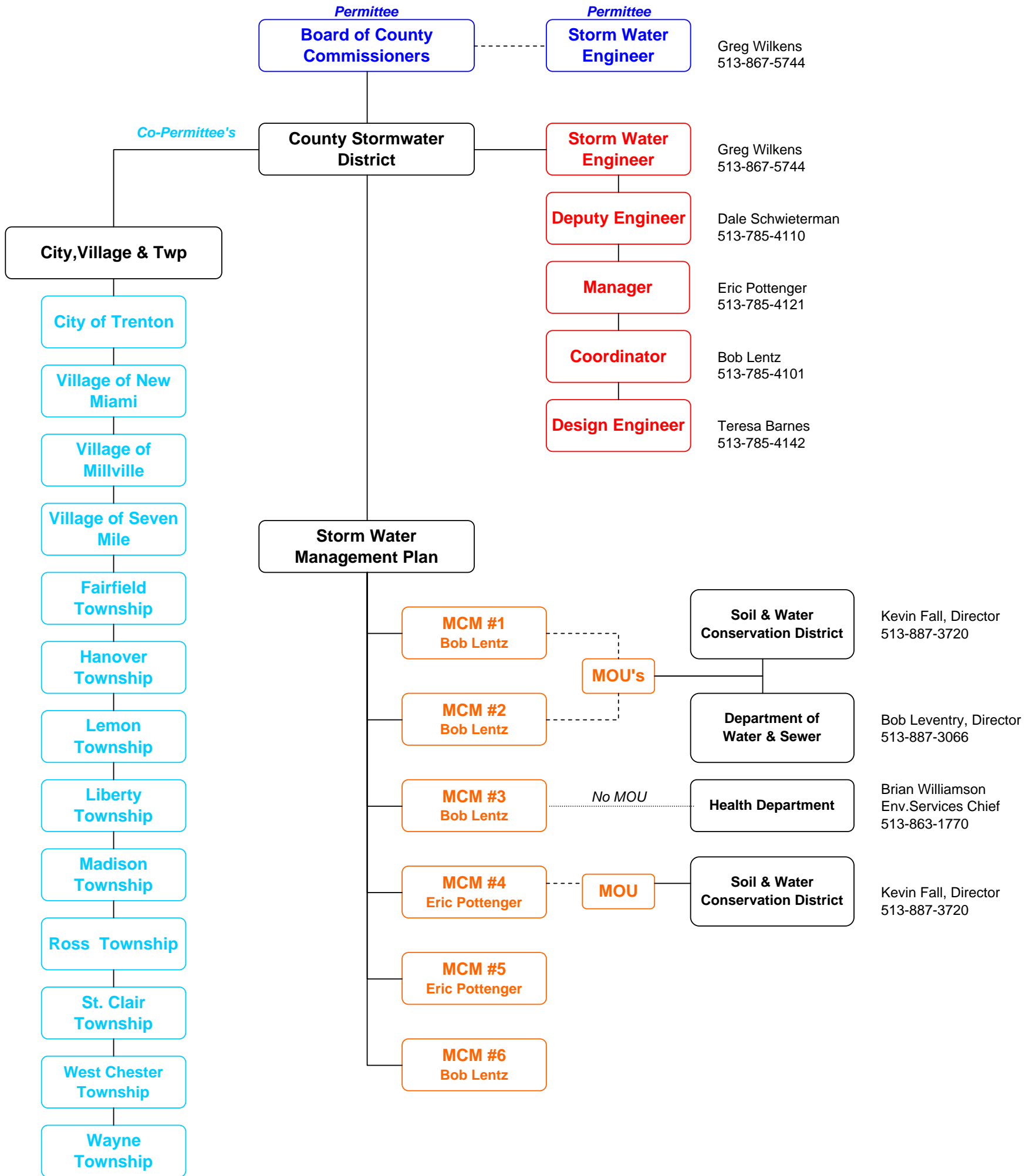
- Summarize any proposed changes to your SWMP, including changes to any BMPs or any identified measurable goals that apply to the program elements. If you fail to satisfy measurable goals for the reporting year, please explain why.

VARIANCES GRANTED (IF ANY)

- Identify and summarize any variances granted under your storm water program.



ATTACHMENT "A"
Organizational Chart
 NPDES Phase II



Attachment "B"
Butler County Storm Water District
2009 Opened Lot Erosion Sediment Control Permits
Applicable Sites for Construction Site Runoff Control

Permit #	Township	Opened Date	Type	Building Permit	Parcel ID
BSW-EL09-00004	FAIRFIELD	1/7/2009	RESIDENTIAL	BLD-RS08-04187	A0300072000065
BSW-EL09-00006	FAIRFIELD	1/7/2009	RESIDENTIAL	BLD-RS08-04188	A0300072000031
BSW-EL09-00005	LIBERTY	1/7/2009	RESIDENTIAL	BLD-RS08-04189	D2020275000044
BSW-LR09-00012	WEST CHESTER	1/9/2009	RESIDENTIAL	BLD-RS09-00006	M5620434000079
BSW-LR09-00013	LIBERTY	1/13/2009	RESIDENTIAL	BLD-RS09-00049	D2020269000044
BSW-LR09-00016	LIBERTY	1/20/2009	RESIDENTIAL	BLD-RS09-00141	D2020232000038
BSW-LR09-00020	LIBERTY	1/21/2009	RESIDENTIAL	BLD-RS09-00161	D2020240000013
BSW-LR09-00025	WEST CHESTER	1/26/2009	RESIDENTIAL	BLD-RS09-00180	M5620434000077
BSW-LR09-00026	WEST CHESTER	1/26/2009	RESIDENTIAL	BLD-RS09-00179	M5620434000076
BSW-LR09-00029	LIBERTY	1/27/2009	RESIDENTIAL	BLD-RS09-00201	D2020299000010
BSW-LR09-00030	LIBERTY	1/27/2009	RESIDENTIAL	BLD-RS09-00236	D2020250000071
BSW-LR09-00031	LIBERTY	1/27/2009	RESIDENTIAL	BLD-RS09-00234	D2020250000053
BSW-LR09-00032	LIBERTY	1/27/2009	RESIDENTIAL	BLD-RS09-00246	D2020232000065
BSW-LR09-00033	LIBERTY	1/27/2009	RESIDENTIAL	BLD-RS09-00244	D2020240000010
BSW-LR09-00054	FAIRFIELD	2/2/2009	RESIDENTIAL	BLD-RH09-00262	A0300072000059
BSW-LR09-00055	LIBERTY	2/2/2009	RESIDENTIAL	BLD-RS09-00260	D2020281000031
BSW-LR09-00056	LIBERTY	2/2/2009	RESIDENTIAL	BLD-RS09-00259	D2020284000022
BSW-LR09-00061	LIBERTY	2/2/2009	RESIDENTIAL	BLD-RS09-00278	D2020232000073
BSW-LR09-00062	LIBERTY	2/2/2009	RESIDENTIAL	BLD-RS09-00294	D2020275000049
BSW-LR09-00063	LIBERTY	2/2/2009	RESIDENTIAL	BLD-RS09-00293	D2020275000028
BSW-LR09-00064	WEST CHESTER	2/2/2009	RESIDENTIAL	BLD-RS09-00296	M5620434000078
BSW-LR09-00065	WEST CHESTER	2/2/2009	RESIDENTIAL	BLD-RS09-00295	M5620434000080
BSW-LR09-00068	LIBERTY	2/4/2009	RESIDENTIAL	BLD-RS09-00311	D2020251000023
BSW-LR09-00069	LIBERTY	2/4/2009	RESIDENTIAL	BLD-RS09-00318	D2020275000026
BSW-LR09-00082	FAIRFIELD	2/17/2009	RESIDENTIAL	BLD-RS09-00379	A0300149000034
BSW-LR09-00081	LIBERTY	2/17/2009	RESIDENTIAL	BLD-RS09-00359	D2020275000025
BSW-LC09-00092	FAIRFIELD	2/18/2009	NONE		A0300019000014
BSW-LR09-00096	FAIRFIELD	2/18/2009	RESIDENTIAL	BLD-RS09-00409	A0300072000066
BSW-LR09-00097	FAIRFIELD	2/18/2009	RESIDENTIAL	BLD-RS09-00408	A0300072000037
BSW-LR09-00098	FAIRFIELD	2/18/2009	RESIDENTIAL	BLD-RS09-00407	A0300072000039
BSW-LR09-00083	LIBERTY	2/18/2009	RESIDENTIAL	BLD-RS09-00345	D2020298000037
BSW-LR09-00086	LIBERTY	2/18/2009	RESIDENTIAL	BLD-RS09-00384	D2020249000098
BSW-LR09-00095	LIBERTY	2/18/2009	RESIDENTIAL	BLD-RS09-00410	D2020275000030
BSW-LR09-00094	WEST CHESTER	2/18/2009	RESIDENTIAL	BLD-RS09-00413	M5620467000009
BSW-LR09-00103	LIBERTY	2/23/2009	RESIDENTIAL	BLD-RS09-00450	D2020278000029
BSW-LC09-00101	WEST CHESTER	2/23/2009	COMMERCIAL	BLD-CT09-00383	M5620127000015
BSW-LR09-00104	WEST CHESTER	2/23/2009	RESIDENTIAL	BLD-RS09-00446	M5620456000113
BSW-LR09-00115	FAIRFIELD	2/26/2009	RESIDENTIAL	BLD-RS09-00481	A0300072000043
BSW-LR09-00116	FAIRFIELD	2/26/2009	RESIDENTIAL	BLD-RS09-00480	A0300072000026
BSW-LR09-00117	FAIRFIELD	2/26/2009	RESIDENTIAL	BLD-RS09-00479	A0300072000044
BSW-LR09-00123	LIBERTY	2/27/2009	RESIDENTIAL	BLD-RH09-00471	D2020250000087
BSW-LC09-00132	FAIRFIELD	3/2/2009	COMMERCIAL	BLD-CT09-00500	A0300019000014
BSW-LR09-00133	LIBERTY	3/2/2009	RESIDENTIAL	BLD-RS09-00520	D2020282000085
BSW-LR09-00126	WEST CHESTER	3/2/2009	RESIDENTIAL	BLD-RS09-00499	M5620095000045
BSW-LR09-00138	LIBERTY	3/5/2009	RESIDENTIAL	BLD-RH09-00526	D2020275000024
BSW-LR09-00140	LIBERTY	3/5/2009	RESIDENTIAL	BLD-RS09-00537	D2020274000044
BSW-LR09-00141	LIBERTY	3/5/2009	RESIDENTIAL	BLD-RS09-00532	D2020232000057
BSW-LR09-00139	WEST CHESTER	3/5/2009	RESIDENTIAL	BLD-RS09-00534	M5620061000008
BSW-LR09-00150	FAIRFIELD	3/9/2009	RESIDENTIAL	BLD-RS09-00545	A0300072000059
BSW-LR09-00151	WEST CHESTER	3/9/2009	RESIDENTIAL	BLD-RS09-00573	M5620456000006
BSW-LR09-00155	FAIRFIELD	3/11/2009	RESIDENTIAL	BLD-RS09-00592	A0300072000042
BSW-LR09-00156	FAIRFIELD	3/11/2009	RESIDENTIAL	BLD-RS09-00586	A0300072000028
BSW-LR09-00152	LIBERTY	3/11/2009	RESIDENTIAL	BLD-RS09-00591	D2020249000085
BSW-LR09-00153	LIBERTY	3/11/2009	RESIDENTIAL	BLD-RS09-00589	D2020250000069
BSW-LR09-00154	LIBERTY	3/11/2009	RESIDENTIAL	BLD-RS09-00588	D2020250000084
BSW-LR09-00164	LIBERTY	3/16/2009	RESIDENTIAL	BLD-RS09-00634	D2020298000010
BSW-LR09-00165	LIBERTY	3/16/2009	RESIDENTIAL	BLD-RS09-00633	D2020298000006
BSW-LR09-00168	LIBERTY	3/16/2009	RESIDENTIAL	BLD-RS09-00649	D2020291000058
BSW-LR09-00169	LIBERTY	3/16/2009	RESIDENTIAL	BLD-RS09-00663	D2020090000060
BSW-LR09-00170	LIBERTY	3/16/2009	RESIDENTIAL	BLD-RS09-00662	D2020278000025
BSW-LR09-00167	WEST CHESTER	3/16/2009	RESIDENTIAL	BLD-RS09-00650	M5620211000087
BSW-LR09-00185	FAIRFIELD	3/20/2009	RESIDENTIAL	BLD-RS09-00684	A0300072000051

BSW-LR09-00186	FAIRFIELD	3/20/2009	RESIDENTIAL	BLD-RS09-00683	A0300072000052
BSW-LR09-00187	LIBERTY	3/20/2009	RESIDENTIAL	BLD-RS09-00682	D2020275000010
BSW-LR09-00189	LIBERTY	3/20/2009	RESIDENTIAL	BLD-RS09-00695	D2020249000096
BSW-LR09-00188	WEST CHESTER	3/20/2009	RESIDENTIAL	BLD-RS09-00694	M5620464000027
BSW-LR09-00190	WEST CHESTER	3/20/2009	RESIDENTIAL	BLD-RS09-00698	M5620446000074
BSW-LR09-00212	LIBERTY	3/27/2009	RESIDENTIAL	BLD-RS09-00737	D2020282000083
BSW-LR09-00213	LIBERTY	3/27/2009	RESIDENTIAL	BLD-RS09-00735	D2020282000104
BSW-LR09-00214	LIBERTY	3/27/2009	RESIDENTIAL	BLD-RS09-00764	D2020275000009
BSW-LR09-00215	WEST CHESTER	3/27/2009	RESIDENTIAL	BLD-RS09-00763	M5620434000093
BSW-LC09-00218	FAIRFIELD	3/30/2009	COMMERCIAL	BLD-CT09-00800	A0300021000043
BSW-LR09-00219	HANOVER	3/30/2009	RESIDENTIAL	BLD-RS09-00766	B1320107000021
BSW-LR09-00228	FAIRFIELD	4/1/2009	RESIDENTIAL	BLD-RS09-00793	A0300072000028
BSW-LR09-00229	FAIRFIELD	4/1/2009	RESIDENTIAL	BLD-RS09-00788	A0300072000050
BSW-LR09-00230	FAIRFIELD	4/1/2009	RESIDENTIAL	BLD-RS09-00789	A0300072000053
BSW-LR09-00234	FAIRFIELD	4/1/2009	RESIDENTIAL	BLD-RS09-00839	A0300072000027
BSW-LR09-00235	FAIRFIELD	4/1/2009	RESIDENTIAL	BLD-RS09-00838	A0300161000011
BSW-LR09-00231	LIBERTY	4/1/2009	RESIDENTIAL	BLD-RS09-00834	D2020250000057
BSW-LR09-00232	LIBERTY	4/1/2009	RESIDENTIAL	BLD-RS09-00840	D2020275000003
BSW-LR09-00233	LIBERTY	4/1/2009	RESIDENTIAL	BLD-RS09-00835	D2020250000078
BSW-LR09-00244	LIBERTY	4/6/2009	RESIDENTIAL	BLD-RS09-00886	D2020250000083
BSW-LR09-00245	LIBERTY	4/6/2009	RESIDENTIAL	BLD-RS09-00888	D2020250000082
BSW-LR09-00246	LIBERTY	4/6/2009	RESIDENTIAL	BLD-RS09-00889	D2020250000086
BSW-LR09-00247	LIBERTY	4/6/2009	RESIDENTIAL	BLD-RS09-00890	D2020250000092
BSW-LR09-00243	WEST CHESTER	4/6/2009	RESIDENTIAL	BLD-RS09-00849	M5620446000072
BSW-LR09-00248	WEST CHESTER	4/8/2009	RESIDENTIAL	BLD-RS09-00912	M5620447000061
BSW-LR09-00249	WEST CHESTER	4/8/2009	RESIDENTIAL	BLD-RS09-00911	M5620447000062
BSW-LR09-00250	WEST CHESTER	4/8/2009	RESIDENTIAL	BLD-RS09-00920	M5630112000007
BSW-LR09-00259	FAIRFIELD	4/13/2009	RESIDENTIAL	BLD-RS09-00586	A0300157000033
BSW-LC09-00258	WEST CHESTER	4/13/2009	COMMERCIAL	BLD-CT09-00873	M5610005000019
BSW-LR09-00266	FAIRFIELD	4/14/2009	RESIDENTIAL	BLD-RS09-00952	A0300072000058
BSW-LR09-00267	FAIRFIELD	4/14/2009	RESIDENTIAL	BLD-RS09-00953	A0300072000048
BSW-LR09-00276	FAIRFIELD	4/15/2009	RESIDENTIAL	BLD-RS09-00967	A0300072000029
BSW-LR09-00277	LIBERTY	4/15/2009	RESIDENTIAL	BLD-RS09-00966	D2020275000004
BSW-LR09-00278	LIBERTY	4/15/2009	RESIDENTIAL	BLD-RS09-00965	D2020275000002
BSW-LR09-00280	LIBERTY	4/15/2009	RESIDENTIAL	BLD-RS09-00986	D2020282000017
BSW-LR09-00281	LIBERTY	4/15/2009	RESIDENTIAL	BLD-RS09-00988	D2020285000019
BSW-LR09-00282	LIBERTY	4/15/2009	RESIDENTIAL	BLD-RS09-00987	D2020285000047
BSW-LR09-00275	WEST CHESTER	4/15/2009	RESIDENTIAL	BLD-RS09-00969	M5620434000096
BSW-LR09-00279	WEST CHESTER	4/15/2009	NONE		M5620434000061
BSW-LR09-00290	FAIRFIELD	4/22/2009	RESIDENTIAL	BLD-RN09-00972	A0300089000053
BSW-LR09-00293	FAIRFIELD	4/23/2009	RESIDENTIAL	BLD-RS09-01041	A0300161000009
BSW-LR09-00294	LIBERTY	4/23/2009	RESIDENTIAL	BLD-RS09-01038	D2020275000033
BSW-LR09-00295	LIBERTY	4/23/2009	RESIDENTIAL	BLD-RS09-01042	D2020275000034
BSW-LR09-00303	LIBERTY	4/27/2009	RESIDENTIAL	BLD-RS09-01050	D2020250000056
BSW-LR09-00304	LIBERTY	4/27/2009	RESIDENTIAL	BLD-RS09-01048	D2020250000081
BSW-LR09-00307	LIBERTY	4/29/2009	RESIDENTIAL	BLD-RS09-01097	D2020296000001
BSW-LR09-00306	WEST CHESTER	4/29/2009	RESIDENTIAL	BLD-RS09-01088	M5620447000054
BSW-LC09-00330	FAIRFIELD	5/4/2009	NONE		A0300008000090
BSW-LR09-00326	LIBERTY	5/4/2009	RESIDENTIAL	BLD-RS09-01118	D2020232000060
BSW-LR09-00327	LIBERTY	5/4/2009	RESIDENTIAL	BLD-RS09-01114	D2020232000074
BSW-LR09-00328	WEST CHESTER	5/4/2009	RESIDENTIAL	BLD-RS09-01130	M5620446000073
BSW-LR09-00331	WEST CHESTER	5/4/2009	RESIDENTIAL	BLD-RS09-01140	M5620434000088
BSW-LR09-00332	WEST CHESTER	5/4/2009	RESIDENTIAL	BLD-RS09-01139	M5620434000095
BSW-LR09-00333	WEST CHESTER	5/4/2009	RESIDENTIAL	BLD-RS09-01138	M5620434000082
BSW-LR09-00344	FAIRFIELD	5/7/2009	RESIDENTIAL	BLD-RS09-01163	A0300145000098
BSW-LR09-00341	LIBERTY	5/7/2009	RESIDENTIAL	BLD-RS09-01160	D2020277000012
BSW-LR09-00342	WEST CHESTER	5/7/2009	RESIDENTIAL	BLD-RS09-01154	M5620447000006
BSW-LR09-00343	WEST CHESTER	5/7/2009	RESIDENTIAL	BLD-RS09-01174	M5620211000075
BSW-LR09-00359	LIBERTY	5/11/2009	RESIDENTIAL	BLD-RS09-01198	D2020250000094
BSW-LR09-00360	LIBERTY	5/11/2009	RESIDENTIAL	BLD-RS09-01199	D2020250000085
BSW-LR09-00361	LIBERTY	5/11/2009	RESIDENTIAL	BLD-RS09-01200	D2020250000077
BSW-LR09-00362	LIBERTY	5/11/2009	RESIDENTIAL	BLD-RS09-01201	D2020250000091
BSW-LR09-00363	LIBERTY	5/11/2009	RESIDENTIAL	BLD-RS09-01197	D2020250000093
BSW-LR09-00365	LIBERTY	5/11/2009	RESIDENTIAL	BLD-RS09-01242	D2020275000038
BSW-LR09-00366	LIBERTY	5/11/2009	RESIDENTIAL	BLD-RS09-01243	D2020275000048
BSW-LR09-00367	LIBERTY	5/11/2009	RESIDENTIAL	BLD-RS09-01237	D2020275000017
BSW-LR09-00368	LIBERTY	5/11/2009	RESIDENTIAL	BLD-RS09-01239	D2020275000045
BSW-LR09-00364	WEST CHESTER	5/11/2009	RESIDENTIAL	BLD-RS09-01240	M5620400000100

BSW-LC09-00369	WEST CHESTER	5/12/2009	COMMERCIAL	BLD-CT09-01212	M562046000010
BSW-LR09-00380	LIBERTY	5/18/2009	RESIDENTIAL	BLD-RS09-01330	D2020282000044
BSW-LC09-00389	WEST CHESTER	5/20/2009	COMMERCIAL	BLD-CT09-01360	M5610024000021
BSW-LR09-00397	FAIRFIELD	5/22/2009	RESIDENTIAL	BLD-RS09-01300	A0300072000054
BSW-LR09-00396	HANOVER	5/22/2009	RESIDENTIAL	BLD-RS09-01224	B1220140000007
BSW-LR09-00401	FAIRFIELD	5/26/2009	RESIDENTIAL	BLD-RS09-01368	A0300166000042
BSW-LR09-00402	LIBERTY	5/26/2009	RESIDENTIAL	BLD-RS09-01374	D2020282000106
BSW-LR09-00403	LIBERTY	5/26/2009	RESIDENTIAL	BLD-RS09-01373	D2020282000103
BSW-LR09-00400	WEST CHESTER	5/26/2009	RESIDENTIAL	BLD-RS09-01371	M5620434000062
BSW-LR09-00404	WEST CHESTER	5/26/2009	RESIDENTIAL	BLD-RS09-01378	M5620211000086
BSW-LR09-00411	LIBERTY	5/27/2009	RESIDENTIAL	BLD-RS09-01390	D2020267000039
BSW-LR09-00412	LIBERTY	5/27/2009	RESIDENTIAL	BLD-RS09-01389	D2020300000008
BSW-LR09-00413	LIBERTY	5/27/2009	RESIDENTIAL	BLD-RS09-01435	D2020249000062
BSW-LR09-00414	LIBERTY	5/27/2009	RESIDENTIAL	BLD-RS09-01436	D2020250000056
BSW-LR09-00415	LIBERTY	5/27/2009	RESIDENTIAL	BLD-RS09-01434	D2020250000080
BSW-LR09-00416	LIBERTY	5/27/2009	RESIDENTIAL	BLD-RS09-01433	D2020250000088
BSW-LR09-00417	LIBERTY	5/27/2009	RESIDENTIAL	BLD-RS09-01430	D2020250000089
BSW-LR09-00418	LIBERTY	5/27/2009	RESIDENTIAL	BLD-RS09-01438	D2020249000083
BSW-LC09-00425	FAIRFIELD	6/1/2009	COMMERCIAL	BLD-CT09-01459	A0300021000044
BSW-LC09-00426	LEMON	6/1/2009	COMMERCIAL	BLD-CT09-01429	C1910001000034
BSW-LR09-00436	LIBERTY	6/2/2009	RESIDENTIAL	BLD-RS09-01498	D2020299000024
BSW-LR09-00437	WEST CHESTER	6/3/2009	RESIDENTIAL	BLD-RS09-01501	M5620429000063
BSW-LR09-00449	LIBERTY	6/4/2009	RESIDENTIAL	BLD-RS09-01565	D2020076000019
BSW-LR09-00450	LIBERTY	6/4/2009	RESIDENTIAL	BLD-RS09-01551	D2020298000008
BSW-LR09-00451	LIBERTY	6/4/2009	RESIDENTIAL	BLD-RS09-01552	D2020236000175
BSW-LR09-00452	LIBERTY	6/4/2009	RESIDENTIAL	BLD-RS09-01554	D2020282000086
BSW-LR09-00447	WEST CHESTER	6/4/2009	RESIDENTIAL	BLD-RS09-01532	M5620434000073
BSW-LR09-00448	WEST CHESTER	6/4/2009	RESIDENTIAL	BLD-RS09-01531	M5620434000092
BSW-LR09-00454	LIBERTY	6/9/2009	RESIDENTIAL	BLD-RS09-01583	D2020299000039
BSW-LR09-00459	WEST CHESTER	6/10/2009	RESIDENTIAL	BLD-RS09-01599	M5620068000082
BSW-LR09-00463	FAIRFIELD	6/11/2009	RESIDENTIAL	BLD-RS09-01633	A0300149000025
BSW-LR09-00462	LIBERTY	6/11/2009	RESIDENTIAL	BLD-RS09-01613	D2020250000015
BSW-LR09-00465	LIBERTY	6/11/2009	RESIDENTIAL	BLD-RS09-01624	D2020284000022
BSW-LR09-00466	LIBERTY	6/11/2009	RESIDENTIAL	BLD-RS09-01654	D2020300000044
BSW-LR09-00467	LIBERTY	6/11/2009	RESIDENTIAL	BLD-RS09-01655	D2020032000022
BSW-LR09-00464	WEST CHESTER	6/11/2009	RESIDENTIAL	BLD-RS09-01625	M5620451000029
BSW-LR09-00476	ROSS	6/16/2009	RESIDENTIAL	BLD-RS09-01660	K4620103000007
BSW-LR09-00479	LIBERTY	6/17/2009	RESIDENTIAL	BLD-RS09-01684	D2020291000057
BSW-LR09-00480	LIBERTY	6/17/2009	RESIDENTIAL	BLD-RS09-01682	D2020276000057
BSW-LR09-00491	LIBERTY	6/18/2009	RESIDENTIAL	BLD-RS09-01711	D2020236000053
BSW-LR09-00497	LIBERTY	6/18/2009	RESIDENTIAL	BLD-RS09-01734	D2020300000045
BSW-LR09-00490	WEST CHESTER	6/18/2009	RESIDENTIAL	BLD-RS09-01696	M5620429000067
BSW-LR09-00492	WEST CHESTER	6/18/2009	RESIDENTIAL	BLD-RS09-01729	M5620434000090
BSW-LR09-00493	WEST CHESTER	6/18/2009	RESIDENTIAL	BLD-RS09-01727	M5620434000091
BSW-LR09-00494	WEST CHESTER	6/18/2009	RESIDENTIAL	BLD-RS09-01728	M5620434000098
BSW-LR09-00495	WEST CHESTER	6/18/2009	RESIDENTIAL	BLD-RS09-01731	M5620434000083
BSW-LR09-00496	WEST CHESTER	6/18/2009	RESIDENTIAL	BLD-RS09-01732	M5620434000072
BSW-LR09-00521	FAIRFIELD	6/24/2009	RESIDENTIAL	BLD-RS09-01780	A0300072000079
BSW-LR09-00522	FAIRFIELD	6/24/2009	RESIDENTIAL	BLD-RS09-01781	A0300072000082
BSW-LR09-00523	FAIRFIELD	6/24/2009	RESIDENTIAL	BLD-RS09-01783	A0300072000083
BSW-LR09-00524	FAIRFIELD	6/24/2009	RESIDENTIAL	BLD-RS09-01785	A0300072000086
BSW-LR09-00528	FAIRFIELD	6/24/2009	RESIDENTIAL	BLD-RS09-01777	A0300072000078
BSW-LR09-00531	FAIRFIELD	6/24/2009	RESIDENTIAL	BLD-RS09-01775	A0300072000055
BSW-LR09-00532	HANOVER	6/24/2009	RESIDENTIAL	BLD-RS09-01796	B1020139000020
BSW-LR09-00520	LIBERTY	6/24/2009	RESIDENTIAL	BLD-RS09-01769	D2020250000079
BSW-LR09-00526	LIBERTY	6/24/2009	RESIDENTIAL	BLD-RS09-01765	D2020249000103
BSW-LR09-00529	LIBERTY	6/24/2009	RESIDENTIAL	BLD-RS09-01786	D2020052000005
BSW-LR09-00527	WEST CHESTER	6/24/2009	RESIDENTIAL	BLD-RS09-01772	M5620464000011
BSW-LR09-00530	WEST CHESTER	6/24/2009	RESIDENTIAL	BLD-RS09-01770	M5620464000010
BSW-LR09-00548	LIBERTY	6/30/2009	RESIDENTIAL	BLD-RS09-01831	D2020278000022
BSW-LR09-00547	WEST CHESTER	6/30/2009	RESIDENTIAL	BLD-RS09-01838	M5620382000067
BSW-LR09-00555	FAIRFIELD	7/1/2009	RESIDENTIAL	BLD-RS09-01881	A0300072000075
BSW-LR09-00556	FAIRFIELD	7/1/2009	RESIDENTIAL	BLD-RS09-01884	A0300072000073
BSW-LR09-00557	FAIRFIELD	7/1/2009	RESIDENTIAL	BLD-RS09-01882	A0300072000072
BSW-LR09-00552	LIBERTY	7/1/2009	RESIDENTIAL	BLD-RS09-01858	D2020282000081
BSW-LR09-00553	LIBERTY	7/1/2009	RESIDENTIAL	BLD-RS09-01879	D2020282000079
BSW-LR09-00554	LIBERTY	7/1/2009	RESIDENTIAL	BLD-RS09-01880	D2020282000094
BSW-LR09-00558	LIBERTY	7/1/2009	RESIDENTIAL	BLD-RS09-01883	D2020275000047

BSW-LR09-00574	MORGAN	7/6/2009	RESIDENTIAL	BLD-RS09-01885	G321002600004
BSW-LR09-00585	FAIRFIELD	7/7/2009	RESIDENTIAL	BLD-RS09-01901	A0300072000080
BSW-LR09-00584	LIBERTY	7/7/2009	RESIDENTIAL	BLD-RS09-01905	D2020232000066
BSW-LR09-00583	WEST CHESTER	7/7/2009	RESIDENTIAL	BLD-RS09-01773	M5620464000002
BSW-LR09-00592	FAIRFIELD	7/8/2009	RESIDENTIAL	BLD-RS09-01973	A0300072000076
BSW-LR09-00593	FAIRFIELD	7/8/2009	RESIDENTIAL	BLD-RS09-01976	A0300072000085
BSW-LR09-00595	FAIRFIELD	7/8/2009	RESIDENTIAL	BLD-RS09-01970	A0300158000029
BSW-LR09-00594	LIBERTY	7/8/2009	RESIDENTIAL	BLD-RS09-01945	D2020276000056
BSW-LR09-00590	WEST CHESTER	7/8/2009	RESIDENTIAL	BLD-RS09-01961	M5620464000012
BSW-LR09-00591	WEST CHESTER	7/8/2009	RESIDENTIAL	BLD-RS09-01962	M5620464000022
BSW-LR09-00598	WEST CHESTER	7/8/2009	RESIDENTIAL	BLD-RS09-01960	M5620211000053
BSW-LC09-00611	HANOVER	7/10/2009	COMMERCIAL	BLD-CT09-01738	B1010021000021
BSW-LR09-00615	LIBERTY	7/13/2009	RESIDENTIAL	BLD-RS09-01942	D2020202000027
BSW-LR09-00628	LIBERTY	7/16/2009	RESIDENTIAL	BLD-RS09-02026	D2020232000061
BSW-LR09-00630	LIBERTY	7/16/2009	RESIDENTIAL	BLD-RS09-02020	D2020236000176
BSW-LR09-00632	LIBERTY	7/16/2009	RESIDENTIAL	BLD-RS09-02044	D2020293000012
BSW-LR09-00629	ROSS	7/16/2009	RESIDENTIAL	BLD-RS09-02018	K4620107000015
BSW-LR09-00640	WEST CHESTER	7/17/2009	RESIDENTIAL	BLD-RS09-02071	M5620447000058
BSW-LR09-00641	FAIRFIELD	7/20/2009	RESIDENTIAL	BLD-RS09-02065	A0300072000074
BSW-LR09-00645	FAIRFIELD	7/20/2009	RESIDENTIAL	BLD-RS09-02062	A0300072000070
BSW-LR09-00646	FAIRFIELD	7/20/2009	RESIDENTIAL	BLD-RS09-02059	A0300072000069
BSW-LR09-00642	LIBERTY	7/20/2009	RESIDENTIAL	BLD-RS09-02073	D2020250000090
BSW-LR09-00644	LIBERTY	7/20/2009	RESIDENTIAL	BLD-RS09-02068	D2020281000042
BSW-LR09-00643	WEST CHESTER	7/20/2009	RESIDENTIAL	BLD-RS09-02074	M5620212000042
BSW-LR09-00647	LIBERTY	7/21/2009	RESIDENTIAL	BLD-RS09-02110	D2020295000023
BSW-LR09-00648	LIBERTY	7/21/2009	RESIDENTIAL	BLD-RS09-02091	D2020282000087
BSW-LR09-00649	ROSS	7/21/2009	RESIDENTIAL	BLD-RS09-02119	K4620102000060
BSW-LR09-00659	LIBERTY	7/27/2009	RESIDENTIAL	BLD-RS09-02157	D2020298000048
BSW-LR09-00661	LIBERTY	7/27/2009	RESIDENTIAL	BLD-RS09-02170	D2020258000105
BSW-LR09-00660	WEST CHESTER	7/27/2009	RESIDENTIAL	BLD-RS09-02180	M5620446000068
BSW-LR09-00665	FAIRFIELD	7/28/2009	RESIDENTIAL	BLD-RS09-02188	A0300072000071
BSW-LR09-00668	LIBERTY	7/29/2009	RESIDENTIAL	BLD-RS09-02209	D2020296000010
BSW-LR09-00667	ST CLAIR	7/29/2009	RESIDENTIAL	BLD-RS09-02211	L5210003000045
BSW-LR09-00671	LIBERTY	7/30/2009	RESIDENTIAL	BLD-RS09-02224	D2020052000005
BSW-LR09-00672	LIBERTY	7/30/2009	RESIDENTIAL	BLD-RS09-02217	M5620381000134
BSW-LR09-00682	LIBERTY	7/31/2009	RESIDENTIAL	BLD-RS09-02242	D2020236000177
BSW-LR09-00683	LIBERTY	7/31/2009	RESIDENTIAL	BLD-RS09-02261	D2020232000075
BSW-LR09-00684	LIBERTY	7/31/2009	RESIDENTIAL	BLD-RS09-02269	D2020232000067
BSW-LR09-00685	WEST CHESTER	7/31/2009	RESIDENTIAL	BLD-RS09-02275	M5620437000034
BSW-LR09-00693	LIBERTY	8/4/2009	RESIDENTIAL	BLD-RS09-02279	D2020299000025
BSW-LR09-00695	LIBERTY	8/4/2009	RESIDENTIAL	BLD-RS09-02271	D2020208000055
BSW-LR09-00697	LIBERTY	8/4/2009	RESIDENTIAL	BLD-RS09-02288	D2020275000037
BSW-LR09-00699	LIBERTY	8/4/2009	RESIDENTIAL	BLD-RS09-02289	D2020275000041
BSW-LR09-00694	ROSS	8/4/2009	RESIDENTIAL	BLD-RS09-02276	K4620102000024
BSW-LR09-00696	WEST CHESTER	8/4/2009	RESIDENTIAL	BLD-RS09-02291	M5620434000085
BSW-LR09-00698	WEST CHESTER	8/4/2009	RESIDENTIAL	BLD-RS09-02290	M5620434000086
BSW-LR09-00712	FAIRFIELD	8/6/2009	RESIDENTIAL	BLD-RS09-02312	A0300072000081
BSW-LR09-00713	LIBERTY	8/6/2009	RESIDENTIAL	BLD-RS09-02311	D2020300000056
BSW-LR09-00714	LIBERTY	8/6/2009	RESIDENTIAL	BLD-RS09-02310	D2020300000046
BSW-LC09-00721	WEST CHESTER	8/10/2009	COMMERCIAL	BLD-CT09-02273	M5670037000020
BSW-LR09-00728	LIBERTY	8/12/2009	RESIDENTIAL	BLD-RS09-02347	D2020278000023
BSW-LR09-00742	FAIRFIELD	8/14/2009	RESIDENTIAL	BLD-RS09-02408	A0300072000032
BSW-LR09-00736	HANOVER	8/14/2009	RESIDENTIAL	BLD-RS09-02370	B1220132000054
BSW-LR09-00738	HANOVER	8/14/2009	RESIDENTIAL	BLD-RS09-02369	B1220140000008
BSW-LR09-00739	OXFORD	8/14/2009	RESIDENTIAL	BLD-RS09-02374	H3510033000036
BSW-LR09-00737	WEST CHESTER	8/14/2009	RESIDENTIAL	BLD-RS09-02358	M5620464000025
BSW-LR09-00740	WEST CHESTER	8/14/2009	RESIDENTIAL	BLD-RS09-02385	M5620468000009
BSW-LR09-00741	WEST CHESTER	8/14/2009	RESIDENTIAL	BLD-RS09-02399	M5620436000010
BSW-LR09-00760	LIBERTY	8/19/2009	RESIDENTIAL	BLD-RS09-02427	D2020232000077
BSW-LR09-00761	LIBERTY	8/19/2009	RESIDENTIAL	BLD-RS09-02428	D2020232000076
BSW-LR09-00758	WEST CHESTER	8/19/2009	RESIDENTIAL	BLD-RS09-02417	M5620439000045
BSW-LR09-00759	WEST CHESTER	8/19/2009	RESIDENTIAL	BLD-RS09-02411	K4620103000037
BSW-LR09-00774	FAIRFIELD	8/25/2009	RESIDENTIAL	BLD-RS09-02456	A0300158000030
BSW-LR09-00772	LIBERTY	8/25/2009	RESIDENTIAL	BLD-RS09-02451	D2020251000026
BSW-LR09-00773	ROSS	8/25/2009	RESIDENTIAL	BLD-RS09-02460	K4620102000051
BSW-LR09-00777	FAIRFIELD	8/27/2009	RESIDENTIAL	BLD-RS09-02493	A0300072000084
BSW-LR09-00778	FAIRFIELD	8/27/2009	RESIDENTIAL	BLD-RS09-02492	A0300072000088
BSW-LR09-00776	WEST CHESTER	8/27/2009	RESIDENTIAL	BLD-RS09-02491	M5620434000061

BSW-LR09-00779	WEST CHESTER	8/27/2009	RESIDENTIAL	BLD-RS09-02490	M5620434000071
BSW-LR09-00785	LIBERTY	8/28/2009	RESIDENTIAL	BLD-RS09-02516	D2010012000042
BSW-LR09-00790	ROSS	8/28/2009	RESIDENTIAL	BLD-RS09-02508	K4620102000038
BSW-LR09-00798	HANOVER	9/1/2009	RESIDENTIAL	BLD-RS09-02552	B1220140000011
BSW-LR09-00802	LIBERTY	9/1/2009	RESIDENTIAL	BLD-RS09-02579	D2020275000048
BSW-LR09-00800	WEST CHESTER	9/1/2009	RESIDENTIAL	BLD-RS09-02575	M5620212000036
BSW-LR09-00801	WEST CHESTER	9/1/2009	RESIDENTIAL	BLD-RS09-02578	M5620434000089
BSW-LR09-00811	FAIRFIELD	9/3/2009	RESIDENTIAL	BLD-RS09-02601	A0300072000047
BSW-LR09-00807	LIBERTY	9/3/2009	RESIDENTIAL	BLD-RS09-02581	D2020275000008
BSW-LR09-00808	WEST CHESTER	9/3/2009	RESIDENTIAL	BLD-RS09-02582	M5620434000084
BSW-LR09-00809	WEST CHESTER	9/3/2009	RESIDENTIAL	BLD-RS09-02583	M5620445000036
BSW-LR09-00810	WEST CHESTER	9/3/2009	RESIDENTIAL	BLD-RS09-02580	M5620451000016
BSW-LR09-00828	FAIRFIELD	9/15/2009	RESIDENTIAL	BLD-RS09-02708	A0300149000027
BSW-LR09-00829	WEST CHESTER	9/15/2009	RESIDENTIAL	BLD-RS09-02712	M5620212000041
BSW-LR09-00833	LIBERTY	9/18/2009	RESIDENTIAL	BLD-RS09-02792	D2020291000062
BSW-LR09-00834	LIBERTY	9/18/2009	RESIDENTIAL	BLD-RS09-02760	D2020291000071
BSW-LR09-00844	FAIRFIELD	9/24/2009	RESIDENTIAL	BLD-RS09-02734	A0300072000070
BSW-LR09-00845	WEST CHESTER	9/24/2009	RESIDENTIAL	BLD-RS09-02826	M5620464000024
BSW-LR09-00846	WEST CHESTER	9/24/2009	RESIDENTIAL	BLD-RS09-02822	M5620212000048
BSW-LR09-00848	LIBERTY	9/25/2009	RESIDENTIAL	BLD-RS09-02864	D2020294000006
BSW-LR09-00847	WEST CHESTER	9/25/2009	RESIDENTIAL	BLD-RS09-02837	M5620211000071
BSW-LC09-00851	WEST CHESTER	9/28/2009	COMMERCIAL	BLD-CT09-02858	M5620090000011
BSW-LR09-00869	LIBERTY	10/5/2009	RESIDENTIAL	BLD-RS09-02883	D2020291000080
BSW-LR09-00870	LIBERTY	10/5/2009	RESIDENTIAL	BLD-RS09-02892	D2020281000041
BSW-LR09-00871	LIBERTY	10/5/2009	RESIDENTIAL	BLD-RS09-02882	D2020295000012
BSW-LR09-00873	LIBERTY	10/5/2009	RESIDENTIAL	BLD-RS09-02914	D2020288000013
BSW-LR09-00874	ROSS	10/5/2009	RESIDENTIAL	BLD-RS09-02951	K4610005000074
BSW-EL08-01011	WEST CHESTER	10/5/2009	COMMERCIAL	BLD-CS08-03366	M5610027000086
BSW-LR09-00868	WEST CHESTER	10/5/2009	RESIDENTIAL	BLD-RS09-02891	M5620434000094
BSW-LR09-00872	WEST CHESTER	10/5/2009	RESIDENTIAL	BLD-RS09-02889	M5620434000090
BSW-LC09-00880	WEST CHESTER	10/7/2009	COMMERCIAL	BLD-SO09-02937	M5610002000036
BSW-LR09-00884	LIBERTY	10/8/2009	RESIDENTIAL	BLD-RS09-02972	D2020263000040
BSW-LR09-00885	LIBERTY	10/8/2009	RESIDENTIAL	BLD-RS09-02971	D2020263000039
BSW-LR09-00886	WEST CHESTER	10/8/2009	RESIDENTIAL	BLD-RS09-02996	M5620434000097
BSW-LC09-00890	HANOVER	10/9/2009	NONE		B1220091000008
BSW-LR09-00897	LIBERTY	10/12/2009	RESIDENTIAL	BLD-RS09-03009	D2020276000055
BSW-LR09-00896	WEST CHESTER	10/12/2009	RESIDENTIAL	BLD-RS09-03010	M5620212000037
BSW-LR09-00898	WEST CHESTER	10/12/2009	RESIDENTIAL	BLD-RS09-03020	M5620454000004
BSW-LR09-00902	WEST CHESTER	10/14/2009	RESIDENTIAL	BLD-RS09-03057	M5620211000074
BSW-LR09-00903	WEST CHESTER	10/14/2009	RESIDENTIAL	BLD-RS09-03042	M5620211000099
BSW-LC09-00906	WEST CHESTER	10/15/2009	COMMERCIAL	BLD-CS09-03006	M5810026000026
BSW-LR09-00911	LIBERTY	10/19/2009	RESIDENTIAL	BLD-RS09-03094	D2020054000024
BSW-LR09-00912	LIBERTY	10/19/2009	RESIDENTIAL	BLD-RS09-03086	D2020299000034
BSW-LR09-00913	WEST CHESTER	10/19/2009	RESIDENTIAL	BLD-RS09-03102	M5620211000092
BSW-LR09-00914	WEST CHESTER	10/19/2009	RESIDENTIAL	BLD-RS09-03101	M5620211000077
BSW-LR09-00916	LIBERTY	10/20/2009	RESIDENTIAL	BLD-RS09-03107	D2020278000038
BSW-LR09-00920	LIBERTY	10/22/2009	RESIDENTIAL	BLD-RS09-03154	D2020178000024
BSW-LR09-00921	LIBERTY	10/22/2009	RESIDENTIAL	BLD-RS09-03145	D2020209000010
BSW-LR09-00925	LIBERTY	10/22/2009	RESIDENTIAL	BLD-RS09-03185	D2020259000040
BSW-LR09-00932	LIBERTY	10/26/2009	RESIDENTIAL	BLD-RS09-03183	D2020240000019
BSW-LC09-00933	MORGAN	10/26/2009	COMMERCIAL	BLD-CO09-03175	G3210028000001
BSW-LR09-00931	ROSS	10/26/2009	RESIDENTIAL	BLD-RS09-03193	K4620102000062
BSW-LR09-00934	LIBERTY	10/28/2009	RESIDENTIAL	BLD-RS09-03208	D2020282000093
BSW-LR09-00935	LIBERTY	10/28/2009	RESIDENTIAL	BLD-RS09-03204	D2020282000082
BSW-LR09-00936	LIBERTY	10/28/2009	RESIDENTIAL	BLD-RS09-03223	D2020299000023
BSW-LR09-00939	MORGAN	10/28/2009	RESIDENTIAL	BLD-RS09-03230	G3210015400007
BSW-LR09-00949	WEST CHESTER	11/3/2009	RESIDENTIAL	BLD-RS09-03292	M5620439000046
BSW-LR09-00950	WEST CHESTER	11/3/2009	RESIDENTIAL	BLD-RS09-03307	M5620439000002
BSW-LR09-00961	HANOVER	11/10/2009	RESIDENTIAL	BLD-RS09-03356	B1220140000002
BSW-LR09-00963	LIBERTY	11/10/2009	RESIDENTIAL	BLD-RS09-03382	D2020281000029
BSW-LR09-00964	LIBERTY	11/10/2009	RESIDENTIAL	BLD-RS09-03383	D2020281000036
BSW-LR09-00962	WEST CHESTER	11/10/2009	RESIDENTIAL	BLD-RS09-03373	M5620445000045
BSW-LR09-00976	LIBERTY	11/23/2009	RESIDENTIAL	BLD-RH09-03486	D2020291000005
BSW-LR09-00972	MADISON	11/23/2009	RESIDENTIAL	BLD-RS09-03473	E2210036000027
BSW-LR09-00973	MADISON	11/23/2009	RESIDENTIAL	BLD-RS09-03474	E2210036000027
BSW-LR09-00974	MADISON	11/23/2009	RESIDENTIAL	BLD-RS09-03472	E2210036000027
BSW-LR09-00975	MADISON	11/23/2009	RESIDENTIAL	BLD-RS09-03471	E2210036000027
BSW-LR09-00979	ROSS	11/30/2009	RESIDENTIAL	BLD-RS09-03503	K4620102000032

BSW-LR09-00981	LIBERTY	12/1/2009	RESIDENTIAL	BLD-RS09-03523	D2020232000066
BSW-LC09-00987	FAIRFIELD	12/4/2009	COMMERCIAL	BLD-CO09-03519	A0300023000080
BSW-LR09-00988	LIBERTY	12/4/2009	RESIDENTIAL	BLD-RS09-03576	D2020288000006
BSW-LR09-00989	LIBERTY	12/4/2009	RESIDENTIAL	BLD-RS09-03578	D2020300000027
BSW-LR09-00990	LIBERTY	12/4/2009	RESIDENTIAL	BLD-RS09-03577	D20202590000039
BSW-LR09-01002	LIBERTY	12/11/2009	RESIDENTIAL	BLD-RS09-03625	D20202990000042
BSW-LR09-01003	LIBERTY	12/11/2009	RESIDENTIAL	BLD-RS09-03633	D2020300000025
BSW-LR09-01004	LIBERTY	12/11/2009	RESIDENTIAL	BLD-RS09-03634	D20202990000035
BSW-LR09-01006	LIBERTY	12/15/2009	RESIDENTIAL	BLD-RS09-03641	D2020300000049
BSW-LR09-01016	LIBERTY	12/18/2009	RESIDENTIAL	BLD-RS09-03675	D20202980000012
BSW-LR09-01018	LIBERTY	12/21/2009	RESIDENTIAL	BLD-RS09-03695	D20202780000042
BSW-LR09-01019	WEST CHESTER	12/21/2009	RESIDENTIAL	BLD-RS09-03700	M5620446000077
BSW-LR09-01020	WEST CHESTER	12/21/2009	RESIDENTIAL	BLD-RS09-03703	M5620446000076
BSW-LR09-01021	WEST CHESTER	12/21/2009	RESIDENTIAL	BLD-RS09-03702	M5620446000063
BSW-LR09-01024	MADISON	12/23/2009	RESIDENTIAL	BLD-RS09-03723	E2210032000054
BSW-LR09-01025	WEST CHESTER	12/23/2009	RESIDENTIAL	BLD-RS09-03722	M5620445000050
BSW-LR09-01026	ROSS	12/28/2009	RESIDENTIAL	BLD-RS09-03753	K4620104000007
BSW-EL07-01016	NA	12/29/2009	NONE		R8000050000009

Appendix “C” Butler County Storm Water District Bonus Activities

B1

Activity: Watershed Signage

Date: 01/01/2009 - 12/31/2009

The Butler County Storm Water District is involved with watershed awareness and education throughout Butler County. This is accomplished in part by coordinating stream crossing sign installation with public awareness and education programs. Butler County Storm Water District was responsible for installing and replacing stream crossing signage at 37 locations.

B2

Activity: Training – Sustainable Behavior

Date: 09/03/2009

The sustainable behavior workshop contained essential information for *any* organization that conducts public education with the goal of effecting behavior change in the general public. Attendees were introduced to a stepwise program for creating successful education and outreach programs that accomplish more than the distribution of information. Individuals learned techniques that will enable them to: create effective messages, identify target audiences, evaluate and quantify program effectiveness, and provide meaningful metrics supporting allocation of resources for program development. Dr. McKenzie-Mohr’s one-day workshop provided a comprehensive introduction to a concept called “community-based social marketing” and how it is being applied throughout the world to foster sustainable behavior. The 61 people who attended the introductory workshop learned the five steps of community-based social marketing (selecting behaviors, identifying barriers, developing strategies, conducting a pilot, and broad scale implementation) and be exposed to numerous case studies illustrating its use.

B3

Activity: Great Miami River Days Festival

Date: 01/01/2009 - 12/31/2009

The Butler County Storm Water District is a major sponsor and a participating member of the Great Miami River Days Festival Committee. Great Miami River Days features historical and recreational events while conservation and recreation organizations participate with hands-on displays to help citizens understand the value of the river – both as a natural resource and an economic-development tool. It is estimated that over 50,000 people attended last year’s event. Since October of 2003 a member of the Butler County Storm Water District has participated in all monthly meetings. Other groups participating in the Festival Planning committee include Friends of the Great Miami; Miami Conservancy District; Hamilton SWCD; St. Clair Township, Butler County; Butler SWCD, Butler County Storm Water District; Butler County Department of Environmental Services; Land Conservancy of Hamilton County. The event is used to promote watershed education and recreational activities associated with the Great Miami River. A portion of the proceeds from Great Miami River Days will be donated to the Great Miami River Recreation Trail project, which will ultimately connect existing trails in Montgomery, Greene, Clark, Warren and Clermont Counties with Butler County. To find out more about River Days, visit <http://www.greatmiamiriverdays.org/>

B4

Activity Title: Mill Creek Watershed Council

Activity Description: Board of Trustees Meetings and Quarterly Council Meetings

Date: 01/01/2009 - 12/31/2009

A representative from the Butler County Storm Water District served on the Board of Trustees and participated in quarterly meetings of the Mill Creek Watershed Council. The purpose of the Mill Creek Watershed Council is to maintain and enhance the asset-value of the Mill Creek by providing resources to the communities and the region to realize lasting benefits. The Mill Creek Watershed Council is a publicly funded, non-profit corporation representing all 37 political jurisdictions in the Mill Creek watershed. The

Council acts as a forum for making watershed-based decisions by convening and coordinating meetings and projects related to the improvement of the Mill Creek. Through these forums, the Council invites public input on watershed-related issues. The full council meets quarterly at locations throughout the watershed and creates a quarterly newsletter, Voice of the Mill Creek, that is mailed to approximately 1400 addresses throughout the watershed. Please visit the following website for additional information: <http://www.millcreekwatershed.org/home.html>

B5

Activity Title: Water Management Association of Ohio

Activity Description: Ohio Stormwater Association

Date: 01/01/2009 - 12/31/2009

A representative from the Butler County Storm Water District serves on the Board of Directors and attended Ohio Stormwater Association Committee Meetings. The Ohio Stormwater Association is a group of public and private citizens dedicated to advancing the management of stormwater and related natural resources through education, leadership, watershed-based coordination and technical assistance in Ohio. The Ohio Stormwater Association is a not-for-profit, non-political organization. The Ohio Stormwater Association is organized formally as the stormwater division of the Water Management Association of Ohio which maintains a 501(c)4 status. The Ohio Stormwater Association provides educational and networking opportunities for people focused on reducing the negative impacts of stormwater runoff. The Ohio Stormwater Association provides quarterly educational meetings on topics of interest to our members and helps to sponsor the Ohio Stormwater Conference being held each spring.

B6

Activity: Butler County Children's Water Festival - Classroom Presentation

Date: 10/16/2009

The Butler County Water Festival was held October 16, 2009 at Miami University Hamilton. The "Hands on Day of Discovery" was attended by over 1,000 fourth, fifth and sixth graders, and over 100 presenters and volunteers from across Butler County. A representative from the Butler County Storm Water District gave a presentation titled, "Where Does Water Run?". The presentation was given to five classes, totaling approximately 300 children. The children learned about various topics such as watersheds, aquifers, storm water, and non-point source pollution. The Butler County Storm Water District also supported the festival financially.

B7

Activity: Public Presentations - Earth Day (Hamilton, Ohio)

Date: 04/24/09

More than 20 state, regional and local environmental organizations, including the Butler County Storm Water District, were at the event to encourage recycling, resource conservation and awareness of local environmental issues. An estimated 300 people stopped by to improve their environmental awareness.

B8

Activity: Public Presentations - EarthFest (Oxford, Ohio)

Date: 04/25/09

The Butler Soil and Water Conservation District were at the event to encourage recycling, resource conservation and awareness of local environmental issues. Live music, informational displays and activities for children presented by numerous Miami and community groups were featured. An estimated 100 people stopped by to improve their environmental awareness.\

B9

Activity: Public Presentations - Test Your Well Water Event

Date: 03/16/2009

Butler County Storm Water District participated with a display and provided information on the hazards of illicit discharge to over 60 residents. This event was a free and confidential testing of well water samples for nitrates occurred at the St. Clair Township Fire Department. Test Your Well events invite private well owners to bring a sample of their well water to be tested for the presence of nitrates and other contaminants at no charge. An innovative aspect of the Test Your Well concept is utilizing students, community organizations and other volunteer groups to offer a valuable service in a non-threatening atmosphere. The events also offer teachable moment for well owners. They learn about non-point source contamination, receive information about water quality and pollution prevention, and have the

opportunity to ask questions while their water is tested. Those conducting the event also benefit. They learn about the importance of environmental health, better understand their role in safeguarding source water quality, and have a raised awareness about source water that can be passed on in their communities.

B10

Activity: Public Presentations - Butler County Stream Team Annual Dinner

Date: 04/04/2009

Displays from the Butler County Storm Water District, Butler Soil & Water Conservation District, and the Institute of Environmental Sciences were made available to approximately 20 volunteers for browsing and the coordinators were available for questions. The Storm Water District gave a short presentation on how the monitoring data could be used by the district to locate and eliminate illicit discharges.

B11

Activity: Public Presentations – Stonegate Home Owners Association – West Chester

Date: 04/06/2009

District met with property owners to discuss the storm water detention basins in the community. There are two water quality basins that continually hold water due to obstruction of the water quality orifice. District discussed the need for continued maintenance and operation of the facility with the owners. Property owners discussed the need for storm water treatment and were told about the NPDES program.

B12

Activity: Public Presentations - Ohio Storm Water Conference

Date: 05/14/2009

The Butler County Storm Water District's presentation titled, "Watershed Monitoring Program Development in Butler County, Ohio", discussed the District's creation of a Comprehensive Watershed Monitoring Plan. Over 400 people attended the conference.

B13

Activity: Public Presentations - OWEA Annual Conference

Date: 06/24/2009

The Butler County Storm Water District's presentation titled, "Watershed Monitoring Program Development in Butler County, Ohio", discussed the District's creation of a Comprehensive Watershed Monitoring Plan.

B14

Activity: Storm Water Hotline – Regional Storm Water Collaborative

Date: 01/01/2009 – 12/31/2009

The Butler County Storm Water District has partnered with the Regional Storm Water Collaborative to create a centralized storm water hotline number (513-946-3999) for Butler, Hamilton and Warren Counties and the newest collaborative member, Northern Kentucky. The Storm Water Hotline provides prompt service to residents in a three county region. The automated phone service directs the caller to the appropriate jurisdiction and enables citizens to call 24-hours a day, seven days a week to report any storm water concerns. The hotline number was publicized through the use billboard advertisements. For more information on the Regional Storm Water Collaborative and the non-point source pollution advertising campaign, please visit <http://www.savelocalwaters.org>

B15

Activity: Illicit Discharge Brochure

Date: 10/16/2009

In an effort to inform the general public of hazards associated with illicit discharges and improper disposal of waste, the Butler County Storm Water District has distributed "Discover Storm Water" and "Watershed Protection" Project WET activity guides to 1300 children at the Butler County Water Festival.

B16

Activity: Illicit Discharge Brochure

Date: 03/26/2009

In an effort to inform public employees, businesses and the general public of hazards associated with illicit discharges and improper disposal of waste, the Butler County Storm Water District has distributed

"After the Storm" & "Discover Storm Water" brochures to 13 member governments. Thirty copies of each brochure (780 copies total) were provided to co-permittees for distribution at public meetings and in government building lobby areas.

B17

Activity Title: Local restoration and habitat improvement projects

Activity Description: Stream Stabilization projects

Date: 01/01/2009 - 12/31/2009

West Chester Township Stream Restoration, Wetlands Improvement and Habitat Reconstruction project (FY-2005 319 & Clean Ohio project): Butler County Department of Water and Sewer (BCWS) assisted with grant application and reporting process, as well as project funding and planning; design and construction of bio-retention basins at the West Chester Service Center site was completed in 2008. Multiple project partners include Butler County Department of Development, Butler County Water and Sewer, Butler County Engineer's Office, Butler County Storm Water District, Butler Soil and Water Conservation District, Greenacres Foundation, Mill Creek Watershed Council of Communities, Schumacher Dugan Construction and the University of Cincinnati.

The Mill Creek Confluence Restoration Project: The project is a collaboration between MCWCC, Butler County Water and Sewer, Metropolitan Sewer District of Greater Cincinnati, and the City of Sharonville; the Project project received a \$1.7 million Ohio Water Pollution Control Loan Fund through the Water Resource Restoration Sponsor Program (WRRSP) in late 2007. This project, to be constructed in 2009, will bring the confluence of the Mill Creek (main stem) and East Fork into attainment with Warm Water Habitat Aquatic Life Use standards.

<http://www.oki.org/elements/DOC/Environment/WaterQuality/MillCreekHeadwatersProject.doc>

B18

Activity Title: Local restoration and habitat improvement projects

Activity Description: Five Star Restoration Grant - Wetland Extended Detention Basin Project

Date: 01/01/2009 - 12/31/2009

Project partners continue to monitor an existing detention basin which was restored to a riparian wetland, principally to provide habitat and treat upland runoff before entering the Upper Mill Creek. The monitoring program was enacted by the partners to evaluate the efficiency of the wetland in its assimilation of pollutants following storm events. Serving as a natural method to treat non-point source runoff, the project also provides a local example of the type of palustrine environment that once existed in the Mill Creek Watershed before urban and suburban land uses dominated the landscape.

Project partners include the Butler SWCD, Butler County Stormwater District, Beckett Ridge HOA, Mill Creek Watershed Council, Ohio Department of Natural Resources, and Miami (OH) University's Institute of Environmental Sciences (IES)

B19

Activity Title: Green Initiatives - Butler County Storm Water District

Activity Description: Rain Garden Installation at Voice of America Park

Date: 01/01/2009 - 12/31/2009

Installation of the rain garden began in November of 2008. The selection and placement of plants will be completed by the end of April 2009. The rain garden is located in a high traffic area directly in front of the "Boat House" facility. The display will include educational signage and will be a great example of a residential application for rain gardens.

B20

Activity: Monitor BMP's – Butler County Engineers Office

Date: 04/07/2008 - 04/06/2009

Several BMPs for the Butler County Engineer's Office were designed and installed at the property located at 1921 Fairgrove Avenue in Hamilton, Ohio. The facility improvements include a bioretention area, two oil & grit separators, and a water quality pond. The design of the bioretention area allows for the collection and treatment of storm water runoff from existing paved areas. In addition to providing pollutant removal, the bioretention facility adds aesthetic appeal to a currently bare area. The best management practices are inspected and maintained throughout the year as necessary.

B21**Activity Title: Green Initiatives - Butler County Storm Water District****Activity Description: OKI Regional Conservation Council's Annual Meeting**

Date: 03/31/2009

The OKI Regional Conservation Council (RCC) is a collegial coordinating body for the nine soil and water conservation districts of Butler, Clermont, Hamilton and Warren counties in Ohio; Boone, Campbell and Kenton counties in Kentucky; and Dearborn and Ohio counties in Indiana. Through annual meetings, summer tours and other joint ventures, the RCC shares information on a variety of conservation issues and successful management practices. It serves as a friendly forum for conservation professionals and lay people elected to the conservation districts' boards of supervisors. The Butler County Storm Water District will provided a presentation on Green Initiatives being practiced and promoted for municipal, residential and commercial applications within the District.

B22**Activity Title: Social Marketing Research****Activity Description: Baseline Telemarketing Survey & Focus Groups**

Date: 06/19/2009

The Butler County Storm Water District contracted with L2 Marketing Research to conduct telemarketing surveys and focus group studies. The information gathered provided a baseline for public awareness of non-point source pollution issues and allows the district to create targeted and effective education and outreach materials. The study resulted in a total of 335 completed phone surveys and two focus groups comprised of 13 people. For a copy of the final report please contact Bob Lentz at 513-785-4101.

B23**Activity Title: Watershed Monitoring Network****Activity Description: Pilot Study – Four Mile Creek**

Date: 01/01/2009 – Present

The Butler County Storm Water District (BCSWD) recognizes that watershed monitoring data is fundamentally necessary to gain an understanding of the water quantity, water quality and nutrient budgets of Butler County watersheds. This project will assist BCSWD in managing water resources to meet multiple objectives within the County. Those objectives include:

- prediction of frequency and severity of floods
- establishing quantity and quality of water for aquatic life and recreation
- managing water use
- developing watershed policies, procedures, and action plans for land use and development

A monitoring network is the "backbone" for facilitating good decision-making toward comprehensive water resource management. BCSWD ultimately intends to collect countywide information to develop guidelines for future activities within its watersheds. This work will create building blocks to drive guidelines for future development within BCSWD watersheds. BCSWD and Woolpert agree that a pilot watershed monitoring project with Four Mile Creek will be invaluable for projecting BCSWD (and stakeholder) staffing, financial, and other resource needs required to extend monitoring from watershed to watershed. The pilot project will facilitate development of standard operating procedures and processes needed to improve, streamline, and ultimately replicate the processes into each additional watershed to be monitored.

B24**Activity: P.R.I.D.E. Program****Activity Description: Litter Collection and Clean-up**

Date: 01/01/2009 - 12/31/2009

PRIDE stands for "Providing Responsibilities for Inmates through Duties for the Environment". Led by the litter crew supervisor, inmates from the Resolutions medium security prison collect litter along public rights-of-ways and in parks and, sometimes, assist in the removal of waste from illegal dumpsites.

- PRIDE Crew "common litter" collected in 2009 (in pounds): 30,317
- PRIDE Crew hours worked in 2009: 1,768 hours
- PRIDE Crew miles traveled in 2009: 909.4 miles

B25**Activity: Computer Recycling Event**

Date: 04/01/2009 - 9/30/2009

Computer Recycling events are sponsored twice a month by Butler County's Solid Waste Management District. The 2009 events were held at the Butler County Engineers Office (1921 Fairgrove Ave.) resulted in the collection of 179 tons of electronics and computer equipment and 3,058 participants.

B26**Activity: Household Hazardous Waste Program**

Date: 06/01/2009 - 09/30/2009

Household Hazardous Waste Recycling Events are held weekly from June to September and are sponsored by Butler County's Solid Waste Management District. The 2009 events resulted in 136 tons of household hazardous waste collected for safe processing, disposal, or recycling. Total number of participants was 3,165.

B27**Activity: Curbside Freon Appliance Collection Program**

Date: 04/01/09 – 9/30/09

Curbside freon appliance collection is sponsored by Butler County's Solid Waste Management District. The 2009 program resulted in the collection of 71 tons of freon containing appliances from 835 participating households.

B28**Activity: Cleanup Event - Clean Sweep of the Great Miami River**

Date: 05/02/2009

Approximately 210 participants collected 9.3 tons of litter and 200 tires at six sites along the Great Miami River in Butler. The event was coordinated in conjunction with the Clean Sweep of the Great Miami River.

B29**Activity: Tire Collection at Ross High School**

Date: 11/07/2009

Tire collection is sponsored by Butler County's Solid Waste Management District. The November event held at the Ross Township High School resulted in the collection of 101.8 tons of tires and 275 people participated.

B30**Activity: Spring Clean Up Day – Fairfield Township**

Date: April 2009

In Spring of 2009 the township held the second annual Fairfield Township Clean-up Day, a volunteer led effort that allowed residents to drop off their debris at dumpsters at four area township locations. Several businesses stepped up to help with the effort contributing dumpsters and the use of their locations. Drop off locations included Home Depot, Shoppes of Tylersville West, Fairfield Fire Department Headquarters, and Fairfield North Elementary.