



NPDES Small MS4 General Permit (OHQ000002) Annual Reporting Form

Instructions for completing this form:

- OHQ000002 requires that this form be used when submitting annual reports. You may request approval to use your own reporting format.
- Annual Reports are due annually on or before April 1st.
- Complete the form and sign and date the certification statement below.
- If more space is needed than is provided, identify within the provided space that Attachment A, B, C, etc. has been attached.
- If an item of the form is not applicable for your program (such as street sweeping), fill in N/A in the space provided.
- Don't include attachments such as brochures, newspaper clips, sign-in sheets, etc. related to your program with this form. You only need to summarize these within this report. These records must be filed and will be needed during program audits.
- When complete, submit this Annual Report form to the following address:
Ohio Environmental Protection Agency
Division of Surface Water
Storm Water Program – Small MS4
P.O. Box 1049
Columbus, Ohio 43216-1049

Small MS4 Annual Report for Year: 2014		
Ohio EPA Facility Permit Number: 1GQ00051*BG		
Name of MS4: Butler County Storm Water District		
Primary Contact: Gregory J. Wilkens, P.E., P.S.		Title: Storm Water Engineer
Mailing Address: 1921 Fairgrove Avenue		
City: Hamilton	Zip Code: Ohio	County: Butler
Telephone Number: 513-867-5744	Email Address: wilkeng@bceo.org	

Include or attach a Table of Organization. Indicate who (name and contact information) is responsible for overall management and implementation of your program, and if different, each minimum control measure of your program. Identify how development and implementation across multiple positions, agencies and departments occur. Also, identify any Memorandum of Understandings (MOUs) or other such agreements that exist.

Attachment "A" - Organizational Chart
Attachment "B" - Applicable Sites for Construction Site Runoff Control
Attachment "C" - Bonus Activities

I certify under penalty of law that this document and all attachments were prepared under my direction or supervision in accordance with a system designed to assure that qualified personnel properly gather and evaluate the information submitted. Based on my inquiry of the person or persons who manage the system, or those persons directly responsible for gathering the information, the information submitted is, to the best of my knowledge and belief, true, accurate and complete. I am aware that there are significant penalties for submitting false information, including possibility of fine and imprisonment for knowing violations.

Print Name: Gregory J. Wilkens, P.E., P.S.

Print Title: Storm Water Engineer

Signature: Gregory J. Wilkens Date: 3/30/2015



PUBLIC EDUCATION & OUTREACH

Estimate Your Permit Area's Total Population: 144,795

BMP (mechanism) & Responsible Party	Measurable Goal	Theme or Message	Target Audience	% of Target Audience Reached	Summary of Results	Effective (Yes or No)
<p>Media Awareness Packet Butler County Storm Water District</p>	<p>Annually prepare at least one Press Release Packet and distribute to local media</p>	<p>Watershed Awareness & Water Quality</p>	<p>General Public</p>	<p>TELEVISION: WLWT-TV Channel 5: 45 advertisement spots purchased, that had a reach of 424,621 with over 1,597,500 viewer impressions. WKRC -TV Channel 12: 95 advertisement spots purchased, that had a reach of 592,412 with over 4,833,700 viewer impressions. Time Warner Cable: 102 advertisement spots with 663,726 impressions. The spot was played on AEN TV, Discovery, ESPN, History Channel, and TNT. RADIO: Radio One – Urban Media Specialist: 80 spots with a reach of 433,600. The ads were played on WDBZ, WOSL, and WIZF. The campaign ads were supplemented with online ads on its websites. YouTube Produced 4 videos. 161 views and were viewed for 342 minutes. WEBSITE: www.savelocalwaters.org Page views: 11,853 Session: 6,160 Users: 4,988</p>	<p>The Regional Storm Water Collaborative utilizes mass media and shared resources in order to raise awareness concerning environmental quality issues in the Ohio River Valley. By leveraging joint resources, our alliance is capable of reaching regional audiences with a consistent message in the most economical and efficient manner possible. The Butler County Storm Water District, is an active founding member of the Regional Storm Water Collaborative.</p>	<p>Yes</p>



				<p><u>SOCIAL MEDIA:</u> Facebook Page likes: 400</p> <p>Twitter Followers: 237 Following:455 Tweets: 490</p> <p><u>EVENTS:</u> Cincinnati Boat Show: 10,000 attendees</p> <p>Home-A-Rama: 60,000 attendees - Rain Garden installation</p> <p><u>WORKSHOPS:</u> YouTube and video editing – 21 attendees</p> <p>Fostering Sustainable Behavior – 187 attendees</p>		
<p>Media Awareness Packet Butler County Storm Water District</p>	<p>Annually prepare at least one Press Release Packet and distribute to local media</p>	<p>Watershed Awareness and Household Hazardous Waste.</p>	<p>General Public</p>	<p>Average daily traffic count for a single billboard was 7,407. Campaign utilized 28 billboards at various times during a six month period.</p>	<p>The Butler County Storm Water District conducts an annual outdoor billboard advertising campaign. The boards delivers the messages such as “Too Toxic To Trash”, “Storm Drains are not Garbage Cans”, and “Explore Your Watershed”. The message prompts people to report pollution to the storm water hotline number. At a minimum, eight boards are placed throughout the county during a single showing. Billboards are also used to highlight public involvement activities such as the Clean Sweep of the Great Miami River. From April –</p>	<p>Yes</p>



					September 2014, twenty eight (28) billboards were posted .	
Education Program for Local Schools	Adopt and Distribute K-12 Water Curricula Program	Watershed Awareness & Water Quality	Students: grades K-12	166 classroom programs reached 3,289 students and 305 adults.	This year the Butler Soil and Water Conservation District conducted 166 education programs within NPDES Phase II affected areas in Butler County. The Butler Soil and Water Conservation District offers programs and resources to local schools/groups. Full day workshops and introductory programs for the following programs are available: Project WET (Water Education for Teachers), Project WILD Aquatics, stream walks, stream monitoring, and On the Trail of Non-Point Pollution Sources.	Yes
Butler Soil & Water Conservation District						
Storm Drain Labeling	Purchase and coordinate installation of 300 labels per year until all labels are marked.	Hazards of Illicit Discharge	Homeowners and General Public	Five separate labeling events were planned for the 2014 permit year. The five events resulted in the installation of three hundred seven (307) storm drain labels on catch basins and the distribution of illicit discharge information to houses by twenty three (23) community volunteers.	Storm drain labels are simple and effective best management practices to prevent non-point source pollution from entering waterways in our community and those downstream. The labels are intended to make urban and suburban homeowners think twice before dumping material down the storm sewers and into rivers, streams, and ponds in their neighborhoods.	Yes
Butler Soil & Water Conservation District						
BONUS ACTIVITIES	N/A	SEE ATTACHMENT "C"	This list contains activities not specifically required by permit or listed as part of the District's Storm Water Management Plan.			
Butler County Storm Water District						

PUBLIC EDUCATION & OUTREACH

- Summarize activities you plan to undertake during the next reporting cycle.

BMP (mechanism) & Responsible Party	Measurable Goal	Theme or Message	Target Audience	% of Target Audience to be Reached	Summary of Planned Activities	Proposed Schedule
Media Awareness Butler County Storm Water District	Annually prepare at least one Press Release Packet and distribute to local media	Household Hazardous Waste	General Public	Dependent on reach of selected media.	Promote public education theme utilizing billboard advertising	Various months throughout the year.
Media Awareness Butler County Storm Water District	Annually prepare at least one Press Release Packet and distribute to local media	Various themes which may include, and are not limited to; water quality, litter prevention, waste reduction, recycling, conservation, environmental stewardship and pollution reduction	General Public	Dependent on reach of selected media.	As a member of the Regional Storm Water Collaborative, contract with various local mass media networks to provide billboard, radio and/or television spots as Public Service Announcements	Will vary based on number of participating municipalities and the type of media selected.
Education Program for Local Schools Butler Soil & Water Conservation District; Butler County Department of Water and Sewer	Provide K-12 Water Curricula Program	Various themes which may include, and are not limited to; water quality, litter prevention, waste reduction, recycling, conservation, environmental stewardship and pollution reduction	School Children K-12	Dependent on requests for programs	Provide a variety of educational programs to school districts within Butler County.	Provide programs as requested throughout the school year.
Storm Drain Labeling Butler Soil & Water Conservation District	Purchase and coordinate installation of 300 labels per year until all labels are marked.	Hazards of Illicit Discharge	Homeowners and General Public	Dependent on number of labels installed and number of houses receiving illicit discharge information door hangers.	Utilize neighborhood volunteers to install storm drain labels and distribute information to residential properties on hazards of illicit discharge	Throughout the year as weather permits.



PUBLIC INVOLVEMENT/PARTICIPATION

BMP (Activity) & Responsible Party	Measurable Goal	Theme or Message	Target Audience	Estimate of People Participated	Summary of Results	Effective (Yes or No)
Public Meetings Butler County Storm Water District	Hold two public meetings and one citizen discussion panel per year until Program is implemented.	District Open House	General Public	Approx. 5,000 people. (Butler County Fair average attendance is around 100,000 people.)	From July 20 – July 26, 2014, the Butler County Storm Water District presented a week long open-house forum at the Butler County Fair to allow the public an opportunity review and discuss the Butler County Storm Water Management Plan and the Annual Report. Informational brochures were also distributed about Non-point Source Pollution and Illicit Discharges.	Yes
Public Meetings Butler County Storm Water District	Hold two public meetings and one citizen discussion panel per year until Program is implemented.	Butler County Storm Water District Quarterly Meetings	Butler County Storm Water District Co-permittees	110 People	A total of one hundred ten (110) people attended the 2014 quarterly public meetings. Since December 2009, the District has foregone lengthy, formal annual meetings and adopt a new format of informal quarterly updates. This change is intended to make meetings more accessible to co-permittees and facilitate the distribution of District information in a timely fashion.	Yes
Butler County Stream Team Butler County Storm Water District	Facilitate and oversee one Stream Clean-Up and Monitoring Program each year.	Volunteers collect data and monitor stream health	General Public and Students	In 2014, the Stream Team sampled 79 stream locations monthly. An average of thirty eight (32) volunteers per month collected field samples and performed chemical analysis in the laboratory.	The Butler County Storm Water District teamed up with Miami University Institute for Environmental Science and the Butler Soil and Water Conservation District to promote and implement a monthly volunteer stream monitoring program to assess local stream quality. A protocol for the lab and field procedures was prepared and submitted to the Ohio EPA Credible Data Program. The Stream Team sampled 79 locations a month and averaged 32 volunteers. When samples are returned to the lab, they are analyzed for six parameters: nitrates, phosphates, bacteria,	Yes



					conductivity, total dissolved solids, pH, and turbidity. For more information concerning the Butler County Stream Team, visit : www.butlercountystreamteam.org	
Stream Walks Butler Soil & Water Conservation District	Facilitate and oversee one Stream Clean-Up and Monitoring Program each year.	Water Quality, Stream Ecology, Watershed Awareness	School Children and Teachers	384 children and 136 adults	The Butler Soil and Water Conservation District conducted 8 challenging, yet entertaining, educational stream and/or wetland walks for 384 children and 136 adults. Topics included water quality (chemical, biological, physical attributes) stream ecology, stream attributes, and watershed mapping.	Yes
Clean Sweep of the Great Miami River Butler County Storm Water District	Facilitate and oversee one Stream Clean-Up and Monitoring Program each year.	Litter Prevention	General Public	300 participants in Butler and Hamilton County; 1100 participants overall.	Over 1100 volunteers participated watershed wide in the "Clean Sweep of the Great Miami River" – an effort to clean up the entire 170-mile river. On May 5th in the Butler and Hamilton County area, 300 participants collected 6.22 tons of litter and 881 tires at sites long the Great Miami River.	Yes
Storm Water Hotline, Database and Response Program Butler County Storm Water District	Document Complaints Received and Follow up in a timely manner.	Illicit Discharge, Illegal Dumping; Drainage; Sanitary; HSTS; Erosion; Other	General Public	144 customer inquiries for the year 2014.	The Butler County Storm Water District created a database and response program to document citizen inquiries/complaints and accurately record contact information. The database and response program recorded over 144 customer inquiries for the year 2014. The database tracks information specific to the customers address, method of contact, nature of inquiry, and detail of inquiry/complaint resolution.	Yes
BONUS ACTIVITIES Butler County Storm Water District	N/A	SEE ATTACHMENT "C"	This list contains activities not specifically required by permit or listed as part of the District's Storm Water Management Plan.			

PUBLIC INVOLVEMENT/PARTICIPATION

- Summarize activities you plan to undertake during the next reporting cycle.

BMP (Activity) & Responsible Party	Measurable Goal	Theme or Message	Target Audience	Estimate of People to Participate	Summary of Planned Activities	Proposed Schedule
Public Meetings Butler County Storm Water District	Hold two public meetings and one citizen discussion panel per year until Program is implemented.	NPDES phase II program information	General Public	As many as event will accommodate.	Utilize a variety of public meeting formats to engage the public such as open house, public hearings, annual meetings, etc.	Various times throughout the year.
Butler County Stream Team Butler County Storm Water District	Facilitate and oversee one Stream Clean-Up and Monitoring Program each year.	Volunteers collect data and monitor stream health	General Public and Students	Dependent on number of volunteers	Meet monthly with volunteer stream monitors to assess local stream quality.	Monthly
Clean Sweep of the Great Miami River Butler County Storm Water District	Facilitate and oversee one Stream Clean-Up and Monitoring Program each year.	Litter Prevention	General Public	Dependent on number of volunteers	Coordinate clean-up of Great Miami River at multiple sites in Butler County.	Annual
Storm Water Hotline, Database and Response Program Butler County Storm water District	Document Complaints Received and Follow up in a timely manner.	Illicit Discharge, Illegal Dumping; Drainage; Sanitary; HSTS; Erosion; Other	General Public	Dependent on caller volume.	Track information specific to the customers address, method of contact, nature of inquiry, and detail of inquiry/complaint resolution. Respond and resolve complaint in a timely manner.	Daily

ILLCIT DISCHARGE DETECTION & ELIMINATION (IDDE)

BMP & Responsible Party	Measurable Goal	Completed (Yes or No)	Cite Local Code(s) Being Used (If available, web link for code(s))	Summary of Results or Activities	Effective (Yes or No)
Ordinance or Other Regulatory Mechanism Butler County Storm Water District	Establish Illicit Discharge Ordinance for District; implement and enforce.	Yes	Butler County Illicit Discharge Detection and Elimination Regulations (Resolution No. 09-11-1954)	On November 12, 2009, the Butler County Board of Commissioners signed and adopted the Illicit Discharge Detection and Elimination Regulations. The final draft is available on the District website: www.stormwaterdistrict.org	Yes
BMP & Responsible Party	Measurable Goal	Completed (Yes or No)	Summary of Activities or Updates		Effective (Yes or No)
Storm Sewer System Map Butler County Storm Water District	Update Storm Sewer Map Annually.	Yes	Using "As-Built" data originating from the 1970's and forward, 100% of known sewer systems have been mapped in the Phase II affected areas within the county. Each year as new development occurs throughout the District, the sewer map will be reviewed and updated.		Yes
BMP & Responsible Party	Measurable Goal	Completed (Yes or No)	Summary of Activities or Updates		Effective (Yes or No)
HSTS Mapping and List Butler County Storm Water District	Update HSTS Map Annually	Yes	The Butler County Storm Water District researched archived HSTS records held by the Butler County Health Department. The information can be viewed graphically with the use of the county GIS system. A map has been made identifying existing HSTS within the District. Updates are made on an annual basis. All new applications for HSTS will be added to that data.		Yes
BMP & Responsible Party	Measurable Goal	Completed (Yes or No)	Summary of Activities or Updates		Effective (Yes or No)
IDDE Plan Butler County Storm Water District	Develop and implement IDDE plan	Yes	By creating and adopting an illicit discharge regulation, the Storm Water District has established the methods and standards for best management practices (BMPs) for controlling the introduction of pollutants into the municipal separate storm sewer system. The regulation establishes the authority and means by which the District will carry out inspection, monitoring and enforcement procedures necessary to ensure compliance. The Butler County Storm Water District created a database and response program to document and accurately record contact information regarding spill reports, illicit discharges, illegal dumping, and citizen complaints. The information obtained from the hotline and database can be mapped with the use of the county GIS system. Problem areas can be viewed graphically based on type, location, and frequency. This database is updated on a regular basis to help identify and resolve problem areas.		Yes



SMALL MS4 ANNUAL REPORT FORM

State of Ohio Environmental Protection Agency

BMP & Responsible Party	Measurable Goal	Completed (Yes or No)	# of Outfalls Screened	# of Dry-Weather Flows Identified	# Of Illicit Discharges:		Effective (Yes or No)
					Identified*	Eliminated	
Dry-Weather Screening of Outfalls Total # Publicly Owned Outfalls 519	Inspect 400 mapped outfalls and sample when necessary	Yes	519	0	0	0	Yes
Butler County Storm Water District							
BONUS ACTIVITIES	N/A	SEE ATTACHMENT "C"	This list contains activities not specifically required by permit or listed as part of the District's Storm Water Management Plan.				
Butler County Storm Water District							

*Include an attachment which provides schedules for elimination of illicit connections that have been identified but have yet to be eliminated.

ILLICIT DISCHARGE DETECTION & ELIMINATION (IDDE)

- Summarize activities you plan to undertake for the next reporting cycle.

BMP & Responsible Party	Measurable Goal	Summary of Planned Activities	Proposed Schedule
Ordinance or Other Regulatory Mechanism Butler County Storm Water District	Continue to implement and enforce IDDE regulation.	Review IDDE regulation and update as needed.	Annually
Butler County Storm Water District			
Storm Sewer System Map Butler County Storm Water District	Update Storm Sewer Map Annually.	Each year as new development occurs throughout the District the sewer map will be reviewed and updated.	Annually
Butler County Storm Water District			
HSTS Mapping and List Butler County Storm Water District	Update HSTS Map Annually	Updates are made on an annual basis. All new applications for HSTS will be added to that data.	Annually
Butler County Storm Water District			
IDDE Plan Butler County Storm Water District	Continue to implement IDDE plan	Review and update plan as needed.	Annually
Butler County Storm Water District			
Dry-Weather Screening of Outfalls	Inspect 400 mapped outfalls and sample when	In 2013, Butler County Storm Water District	Annually



Butler County Storm Water District	necessary	completed a multiple phase county-wide, public and private, outfall inventory project. In 2014, the District identified 519 publicly owned and operated outfalls from the total number of outfalls inventoried. An annual outfall inspection program will be implemented each year to address publicly owned outfalls.	
------------------------------------	-----------	--	--



CONSTRUCTION SITE RUNOFF CONTROL

BMP & Responsible Party	Measurable Goal	Completed (Yes or No)	Cite Local Code(s) Being Used (If available, web link for code(s))		Summary of Results or Activities	Effective (Yes or No)
Ordinance or Other Regulatory Mechanism Butler County Storm Water District	Compliance with NPDES Construction General Permit requirements.	Yes	Butler County Subdivision Regulations		The Butler County Subdivision regulations were revised in 2011. The revisions were adopted on January 12, 2012. The revisions covered a number of non-point source pollution topics including construction site storm water discharges and groundwater pollution potential.	Yes
BMP & Responsible Party	Measurable Goal	Completed (Yes or No)	Standards Being Used		Summary of Results or Activities	Effective (Yes or No)
Sediment and Erosion Control Requirements Butler County Storm Water District	Compliance with NPDES Construction General Permit requirements.	Yes	Erosion and Sediment Control Regulations: Article VII – Butler County Subdivision Regulations		Erosion and Sediment Control Regulations: Article VII were adopted as part of the of the Butler County Subdivision regulations on March 12, 2007. The changes were effective during the Summer of 2007.	Yes
BMP & Responsible Party	Measurable Goal	Completed (Yes or No)	Complaints		Summary of Results or Activities	Effective (Yes or No)
Complaint Process Butler County Storm Water District	Respond to all complaints	Yes	Received	Followed-Up On	Responded to and resolved all complaints.	Yes
			1	1		
BMP & Responsible Party	Measurable Goal	Completed (Yes or No)	# of Applicable Sites Requiring Plans	# of Plans Reviewed	Summary of Results or Activities	Effective (Yes or No)
Site Plan Review Procedures Butler County Storm Water District	Review all site plans for compliance	Yes	505	505	Made plan comments to ensure that all sites were in compliance with regulations.	Yes



BMP & Responsible Party	Measurable Goal	Completed (Yes or No)	Site Inspections Performed			Summary of Results or Activities	Effective (Yes or No)
			# of Applicable Sites	# Performed	Avg. Frequency		
Site Inspection Procedures Butler County Storm Water District	Inspect all applicable sites for compliance	Yes	505	3921	Residential Every two weeks	Inspected active sites for compliance with Erosion and Sediment control Regulations	Yes
162				Commercial Monthly			
BMP & Responsible Party	Measurable Goal	Completed (Yes or No)	Violations		Summary of Results or Activities	Effective (Yes or No)	
			# of Violation Letters	# of Enforcement Actions			
Enforcement Procedures Butler County Storm Water District	Ensure compliance with regulations.	Yes	27	0	Violations resolved. Enforcement actions unnecessary.	Yes	

*Include an attachment which identifies applicable sites within your jurisdiction for this reporting period.

CONSTRUCTION SITE RUNOFF CONTROL

- Summarize activities you plan to undertake during the next reporting cycle.

BMP & Responsible Party	Measurable Goal	Summary of Planned Activities	Proposed Schedule
Ordinance or Other Regulatory Mechanism Butler County Storm Water District	Compliance with NPDES Construction General Permit requirements.	Review Federal and State rule changes and revise county regulations.	As needed.
Sediment and Erosion Control Requirements Butler County Storm Water District			
Complaint Process	Respond to all complaints.	Respond to all complaints and ensure	As needed.



Butler County Storm Water District		compliance with all regulations.	
Butler County Storm Water District	Review all site plans for compliance	Continue to make plan comments to ensure that all sites were in compliance with regulations.	As needed.
Butler County Storm Water District			
Site Inspection Procedures	Inspect all applicable sites for compliance	Inspect active sites for compliance with Erosion and Sediment control Regulations	As needed.
Butler County Storm Water District			
Enforcement Procedures	Ensure compliance with regulations.	Enforce compliance on all active sites.	As needed.
Butler County Storm Water District			



POST-CONSTRUCTION STORM WATER MANAGEMENT IN NEW DEVELOPMENT AND REDEVELOPMENT

BMP & Responsible Party	Measurable Goal	Completed (Yes or No)	Cite Local Code(s) Being Used (If available, web link for code(s))		Summary of Results or Activities	Effective (Yes or No)
Ordinance or Other Regulatory Mechanism Butler County Storm Water District and Co-Permittees	Comply with post-construction requirements for NPDES phase II permit. (ie. Provide for open space, minimization of impervious area, protection of natural resources, etc.)	Yes	Butler County Subdivision Regulations Butler County Flood Damage Prevention Regulations Butler County Zoning Code Township Zoning Code (Fairfield, Liberty, St. Clair, Wayne, West Chester) City of Trenton Subdivision Regulations and Zoning		All documents have been updated to include post construction requirements. Documents are reviewed as needed to ensure compliance.	Yes
BMP & Responsible Party	Measurable Goal	Completed (Yes or No)	Structural and/or Non-Structural Standards Being Used		Summary of Results or Activities	Effective (Yes or No)
Post-Construction Requirements Butler County Storm Water District and Co-Permittees	Comply with post-construction requirements for NPDES phase II permit.	Yes	Ohio EPA Construction General Permit requirements ODNR Rainwater and Land Development Manual ODOT Location and Design Manual Also, see above document list.		All documents have been updated to include post construction requirements. Documents are reviewed as needed to ensure compliance.	Yes
BMP & Responsible Party	Measurable Goal	Completed (Yes or No)	# of Applicable Sites Requiring Post-Const. BMPs	# of Plans Reviewed	Summary of Results or Activities	Effective (Yes or No)
Site Plan Review Procedures Butler County Storm Water District	Review all sites required to obtain Ohio EPA Construction General Permit	Yes	16	16	Made plan comments to ensure that all sites were in compliance with regulations.	Yes
BMP & Responsible Party	Measurable Goal	Completed (Yes or No)	Site Inspections Performed		Summary of Results or Activities	Effective (Yes or No)
			# Performed	Avg. Frequency		
Site Inspection Procedures Butler County Storm Water District	Inspect all sites that require post construction BMPs (ie. greater than 5 acres)	Yes	86	Monthly	Inspected active sites for compliance with Erosion and Sediment Control Regulations.	Yes
BMP & Responsible Party	Measurable Goal	Completed (Yes or No)	Violations		Summary of Results or Activities	Effective (Yes or No)
			# of Violation Letters	# of Enforcement Actions		
Enforcement Procedures	Ensure compliance with	Yes	0	0	Enforced compliance on all active sites.	Yes



SMALL MS4 ANNUAL REPORT FORM

State of Ohio Environmental Protection Agency

Butler County Storm Water District	E&SC regulations.					
BMP & Responsible Party	Measurable Goal	Completed (Yes or No)	# of Sites Requiring Plans/Agreements	# of Plans Developed/Agreements in Place	Summary of Results or Activities	Effective (Yes or No)
Long-Term O&M Plans/Agreements						
Butler County Storm Water District	Ensure that facilities are either publicly owned and operated or a Home Owners Association or a Property Owners Association is established.	Yes	10	10	The Butler County Engineers Office coordinates and plans inspections of all publicly owned and operated drainage structures within the District on an annual basis. Facilities and structures have maintenance performed as necessary based upon inspection results. A report is issued annually to the County commissioners on all inspection and maintenance activities.	Yes

POST-CONSTRUCTION STORM WATER MANAGEMENT IN NEW DEVELOPMENT AND REDEVELOPMENT

- Summarize activities you plan to undertake for the next reporting cycle.

BMP & Responsible Party	Measurable Goal	Summary of Planned Activities	Proposed Schedule
Ordinance or Other Regulatory Mechanism	Comply with post-construction requirements for NPDES phase II permit. (ie. Provide for open space, minimization of impervious area, protection of natural resources, etc.)	All documents will be updated to include post construction requirements. Documents are reviewed as needed to ensure compliance.	Annually
Butler County Storm Water District			
Post-Construction Requirements	Comply with post-construction requirements for NPDES phase II permit.	All documents will be updated to include post construction requirements. Documents are reviewed as needed to ensure compliance.	Annually
Butler County Storm Water District			



<p>Site Plan Review Procedures</p>	<p>Review all sites required to obtain Ohio EPA Construction General Permit</p>	<p>Make plan comments to ensure that all sites were in compliance with regulations.</p>	<p>Annually</p>
<p>Butler County Storm Water District</p>			
<p>Site Inspection Procedures</p>	<p>Inspect all sites that require post construction BMPs (ie. greater than 5 acres)</p>	<p>Inspect active sites for compliance with Erosion and Sediment Control Regulations.</p>	<p>Annually</p>
<p>Butler County Storm Water District</p>			
<p>Enforcement Procedures</p>	<p>Ensure compliance with E&SC regulations.</p>	<p>Enforce compliance on all active sites.</p>	<p>Annually</p>
<p>Butler County Storm Water District</p>			
<p>Long-Term O&M Plans/Agreements</p>	<p>Ensure that facilities are either publicly owned and operated or a Home Owners Association or a Property Owners Association is established.</p>	<p>The Butler County Engineers Office will continue to coordinate and plan inspections of all publicly owned and operated drainage structures within the District on an annual basis. Facilities and structures have maintenance performed as necessary based upon inspection results. A report is issued annually to the County commissioners on all inspection and maintenance activities.</p>	<p>Annually</p>
<p>Butler County Storm Water District</p>			



SMALL MS4 ANNUAL REPORT FORM

State of Ohio Environmental Protection Agency

POLLUTION PREVENTION/GOOD HOUSEKEEPING FOR MUNICIPAL OPERATIONS

BMP & Responsible Party	Measurable Goal	Completed (Yes or No)	Topic(s)	Targeted Audience	# of Employees Attended	Summary of Activity	Effective (Yes or No)
Employee Training Program	Establish plan for training and train 25% per year	Yes	Varied by facility. Topics include: Spill Identification and Emergency response; SPCC; Construction Site Runoff Control; Snow and Ice Control	Municipal Employees	107 Employees*	Reviewed PPGHP and training video..	Yes
Butler County Storm Water District							
List of Municipal Facilities Subject to Program					O&M Procedures Developed for Facilities (Yes or No)	# of Facility Inspections Performed	Frequencies of Such Inspections
<ol style="list-style-type: none"> 1. Butler County Engineer's Office 2. City of Trenton 3. Fairfield Township (Morris Road) 4. Fairfield Township (Tylersville Road) 5. Hanover Township 6. Lemon Township 7. Liberty Township 8. Madison Township 9. Ross Township 10. St. Clair Township 11. Village of New Miami 12. Village of Seven Mile 13. Wayne Township 14. West Chester Township 					Yes	13	Annual
MS4 Maintenance	Summarize Maintenance Activities and Schedules			Summarize Activities Performed			
	Maintenance activities are performed on an as-needed basis.			The Butler County Engineers Office coordinates and plans inspections of all drainage structures within the District on an annual basis. Facilities and structures have maintenance performed as necessary based upon inspection results. A report is issued annually to the County commissioners on all inspection and maintenance activities.			
Disposal of Wastes	Procedures Developed (Yes or No)		Document Amounts of Wastes Properly Disposed				
	Yes		1,710 gallons of automotive fluids recycled (i.e. Transmission fluid, gear oil, engine oil) Tires – 162 Batteries – 40				
Road Salt	Covered (Yes or No)		Tons Used	Summarize Measures Taken to Minimize Usage			
	Yes		20,995	Salt usage minimized through the use of Standard Operating Procedures (SOPs) for snow and ice control. Further reductions are achieved with the use of the automated brine maker and distribution tanks for pretreatment. Also investigated and experimented with beet juice as salt alternative.			



SMALL MS4 ANNUAL REPORT FORM

State of Ohio Environmental Protection Agency

Pesticide & Herbicide Usage	Procedures Developed (Yes or No)	Gallons Used	Summarize Measures Taken to Minimize Usage
	Yes	306.36 gallons of concentrate 2,056 lbs. dry granular	Butler County Engineers Office has developed and implemented Standard Operating Procedures (SOPs) for pesticide and herbicide application. All employees that participate in pesticide and herbicide application are licensed by the Ohio Department of Agriculture.
Fertilizer Usage	Procedures Developed (Yes or No)	Pounds Used	Summarize Measures Taken to Minimize Usage
	Yes	2837.5	No phosphorus fertilizer used. Application rate set at 5 lbs. per 1000 sq. ft.
Street Sweeping	Procedures Developed (Yes or No)	Document Amount of Material Collected and Properly Disposed	
	Yes	Street sweeping as needed for county bridges and curb & gutter roads. Procedure in place for dewatering and disposal of collected waste. Currently procedures do not include a method to calculate and record the amount of material collected.	
Flood Management Projects	Summarize any New or Existing Flood Management Projects that were Assessed for Impacts on Water Quality		
	N/A		
BONUS ACTIVITIES	N/A	SEE ATTACHMENT "C"	This list contains activities that not specifically required by permit or listed as part of the District's Storm Water Management Plan.
Butler County Storm Water District			

*Numbers reflect totals as reported by 13 of 14 facilities.

POLLUTION PREVENTION/GOOD HOUSEKEEPING FOR MUNICIPAL OPERATIONS

- Summarize activities you plan to undertake for the next reporting cycle.

BMP & Responsible Party	Measurable Goal	Summary of Planned Activities	Proposed Schedule
Employee Training Program	Train 25% of municipal employees subject to program.	Continue to implement training component of facility PPGHP.	Annually
Butler County Storm Water District			
List of Facilities Subject to Program	List all facilities subject to Program.	Review existing list of facilities subject to program and make changes as needed.	Annually
Butler County Storm Water District			
MS4 Maintenance	Inspect drainage structures within the District on	Coordinate and plan inspections of drainage structures within the District on an annual basis.	Annually



Butler County Storm Water District	an annual basis.	Perform maintenance as necessary based upon inspection results. Issue report annually to the County commissioners on all inspection and maintenance activities.	
Disposal of Wastes	Gallons of oil properly recycled/recovered	Recycle oil.	Continuous.
Butler County Storm Water District			
Road Salt	Minimize salt usage	Minimize salt usage through the use of Snow and Ice control SOPs, use of brine pretreatment system and investigate salt alternatives.	Annually
Butler County Storm Water District			
Pesticide & Herbicide Usage	Minimize pesticide and herbicide usage	Continue to implement implemented Standard Operating Procedures (SOPs) for pesticide and herbicide application. Ensure employees obtain and maintain licensed by the Ohio Department of Agriculture license.	Annually
Butler County Storm Water District			
Fertilizer Usage	N/A	N/A	N/A
Butler County Storm Water District			
Street Sweeping	Properly dispose of and Document Amount of Material Collected	Develop and implement a method to calculate and record the amount of material collected.	Complete by the end of the permit cycle- 2015.
Butler County Storm Water District			
Flood Management Projects	N/A	N/A	N/A
Butler County Storm Water District			



PROPOSED CHANGES TO YOUR SWMP (IF ANY)

- Summarize any proposed changes to your SWMP, including changes to any BMPs or any identified measurable goals that apply to the program elements. If you fail to satisfy measurable goals for the reporting year, please explain why.

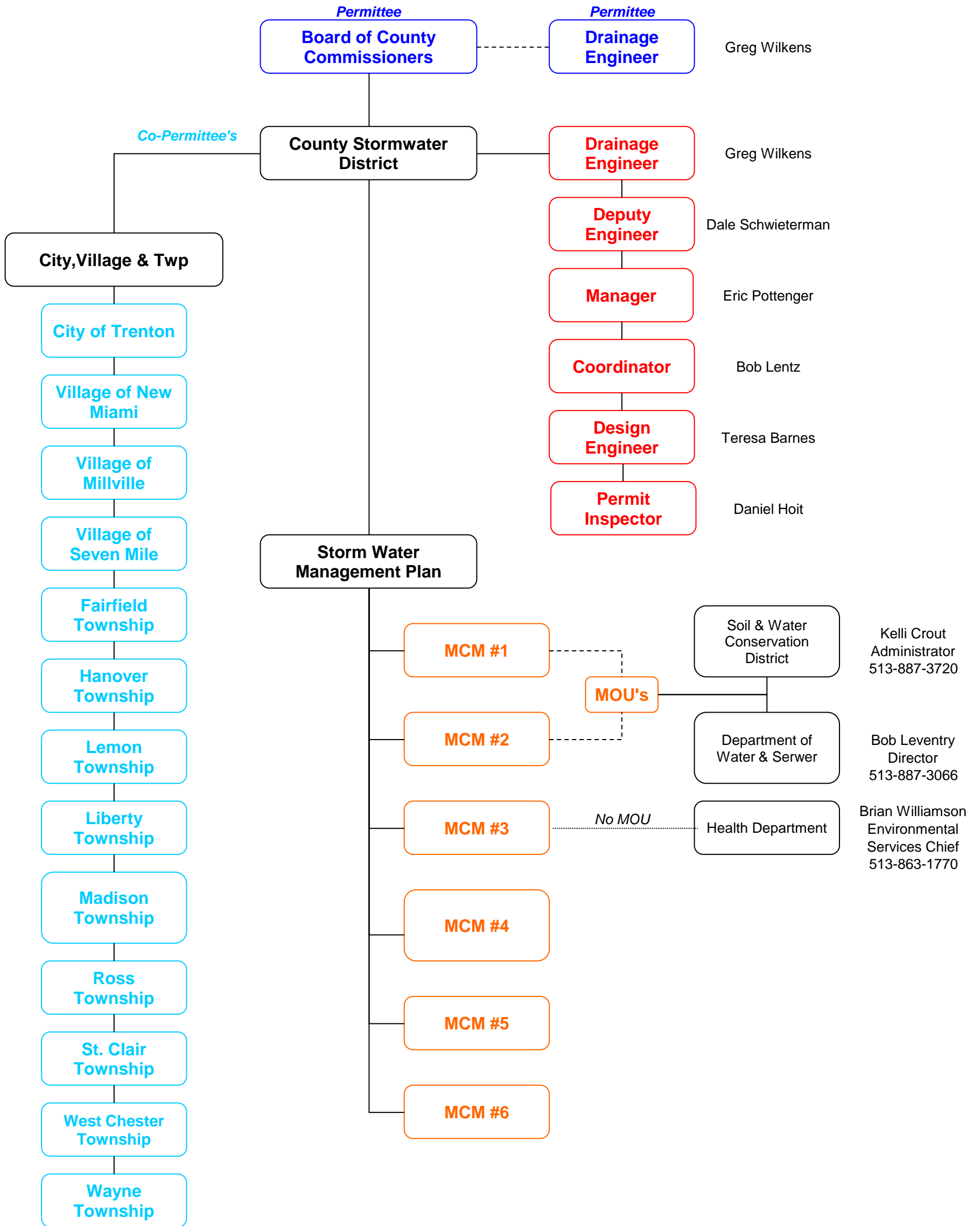
VARIANCES GRANTED (IF ANY)

- Identify and summarize any variances granted under your storm water program.



Organizational Chart

NPDES Phase II



Permittee

Co-Permittee

Storm Water Staff

Minimum Control Measure

Total Permit Count from 01/01/2014 to 12/31/2014

Opened Erosion Sediment Control Permits

<u>Permit #</u>	<u>Township</u>	<u>Category</u>	<u>Parcel #</u>	<u>Date Opened</u>
BSW-LR14-00013	FAIRFIELD	Residential	A0300165000056	01/09/2014
BSW-LR14-00018	LIBERTY	Residential	D2020309000004	01/09/2014
BSW-LR14-00019	LIBERTY	Residential	D2020246000065	01/09/2014
BSW-LR14-00020	LIBERTY	Residential	D2020305000047	01/09/2014
BSW-LR14-00021	LIBERTY	Residential	D2020309000019	01/09/2014
BSW-LR14-00022	LIBERTY	Residential	D2020292000031	01/09/2014
BSW-LR14-00023	WEST CHESTER	Residential	M5620381000043	01/09/2014
BSW-LR14-00024	LIBERTY	Residential	D2020309000014	01/09/2014
BSW-LR14-00025	LIBERTY	Residential	D2020208000048	01/09/2014
BSW-LR14-00026	LIBERTY	Residential	D2020303000018	01/09/2014
BSW-LR14-00027	LIBERTY	Residential	D2020305000020	01/09/2014
BSW-LR14-00028	WEST CHESTER	Residential	M5620461000001	01/09/2014
BSW-LR14-00039	LIBERTY	Residential	D2020296000027	01/15/2014
BSW-LR14-00043	LIBERTY	Residential	D2020304000052	01/15/2014
BSW-LR14-00044	LIBERTY	Residential	D2020300000023	01/15/2014
BSW-LR14-00045	FAIRFIELD	Residential	A0300159000027	01/15/2014
BSW-LR14-00046	LIBERTY	Residential	D2020296000040	01/15/2014
BSW-LR14-00047	FAIRFIELD	Residential	A0300158000034	01/15/2014

Total Permit Count from 01/01/2014 to 12/31/2014

<u>Permit #</u>	<u>Township</u>	<u>Category</u>	<u>Parcel #</u>	<u>Date Opened</u>
BSW-LR14-00048	LIBERTY	Residential	D2020300000018	01/15/2014
BSW-LR14-00049	LIBERTY	Residential	D2020299000040	01/15/2014
BSW-LR14-00063	LIBERTY	Residential	D2020305000033	01/22/2014
BSW-LR14-00064	LIBERTY	Residential	D2020305000036	01/22/2014
BSW-LR14-00065	LIBERTY	Residential	D2020305000046	01/22/2014
BSW-LR14-00066	LIBERTY	Residential	D2020305000009	01/22/2014
BSW-LR14-00067	LIBERTY	Residential	D2020307000004	01/22/2014
BSW-LR14-00068	LIBERTY	Residential	D2020301000064	01/22/2014
BSW-LR14-00069	LIBERTY	Residential	D2020304000054	01/22/2014
BSW-LR14-00071	LIBERTY	Residential	D2020281000060	01/22/2014
BSW-LR14-00092	LIBERTY	Residential	D2020303000048	01/28/2014
BSW-LR14-00093	LIBERTY	Residential	D2020083000006	01/28/2014
BSW-LR14-00094	LIBERTY	Residential	D2020083000020	01/28/2014
BSW-LR14-00095	LIBERTY	Residential	D2020306000002	01/28/2014
BSW-LR14-00096	LIBERTY	Residential	D2020305000034	01/28/2014
BSW-LR14-00097	LIBERTY	Residential	D2020241000029	01/28/2014
BSW-LR14-00098	LIBERTY	Residential	D2020304000059	01/28/2014
BSW-LR14-00103	LIBERTY	Residential	D2020291000029	01/29/2014
BSW-LR14-00104	WEST CHESTER	Residential	M5620472000026	01/29/2014

Total Permit Count from 01/01/2014 to 12/31/2014

<u>Permit #</u>	<u>Township</u>	<u>Category</u>	<u>Parcel #</u>	<u>Date Opened</u>
BSW-LR14-00105	LIBERTY	Residential	D2020083000016	01/30/2014
BSW-LR14-00106	FAIRFIELD	Residential	A0300165000053	01/30/2014
BSW-LR14-00107	FAIRFIELD	Residential	A0300165000065	01/30/2014
BSW-LR14-00108	LIBERTY	Residential	D2020303000054	01/30/2014
BSW-LR14-00109	LIBERTY	Residential	D2020309000009	01/30/2014
BSW-LR14-00110	LIBERTY	Residential	D2020286000043	01/30/2014
BSW-LR14-00111	LIBERTY	Residential	D2020305000032	01/30/2014
BSW-LR14-00112	LIBERTY	Residential	D2020307000002	01/30/2014
BSW-LR14-00118	FAIRFIELD	Residential	A0300147000131	01/31/2014
BSW-LR14-00125	MADISON	Residential	R8000041000017	02/04/2014
BSW-LR14-00126	LIBERTY	Residential	D2020304000002	02/05/2014
BSW-LR14-00127	LIBERTY	Residential	D2020055000039	02/05/2014
BSW-LR14-00144	WEST CHESTER	Residential	M5620467000030	02/12/2014
BSW-LR14-00145	LIBERTY	Residential	D2020305000026	02/12/2014
BSW-LR14-00146	WEST CHESTER	Residential	D2020299000047	02/12/2014
BSW-LR14-00153	LIBERTY	Residential	D2020304000058	02/13/2014
BSW-LR14-00154	MADISON	Residential	R8000022000101	02/13/2014
BSW-LR14-00155	LIBERTY	Residential	D2020054000082	02/13/2014
BSW-LR14-00156	LIBERTY	Residential	D2020054000077	02/13/2014

Total Permit Count from 01/01/2014 to 12/31/2014

<u>Permit #</u>	<u>Township</u>	<u>Category</u>	<u>Parcel #</u>	<u>Date Opened</u>
BSW-LR14-00157	FAIRFIELD	Residential	A0300147000105	02/13/2014
BSW-LR14-00158	LIBERTY	Residential	D2020247000057	02/13/2014
BSW-LR14-00159	LIBERTY	Residential	D2020055000038	02/13/2014
BSW-LR14-00161	LIBERTY	Residential	D2020301000067	02/18/2014
BSW-LC14-00177	LIBERTY	Commercial	D2010017000125	02/24/2014
BSW-LR14-00170	LIBERTY	Residential	D2020305000046	02/24/2014
BSW-LR14-00171	WEST CHESTER	Residential	M5610004000082	02/24/2014
BSW-LR14-00172	WEST CHESTER	Residential	M5610004000082	02/24/2014
BSW-LR14-00173	LIBERTY	Residential	D2020301000018	02/24/2014
BSW-LR14-00174	LIBERTY	Residential	D2020305000041	02/24/2014
BSW-LR14-00175	FAIRFIELD	Residential	A0300032000048	02/24/2014
BSW-LR14-00176	LIBERTY	Residential	D2020252000039	02/24/2014
BSW-LR14-00189	LIBERTY	Residential	D2020185000047	02/27/2014
BSW-LR14-00190	LIBERTY	Residential	D2020054000079	02/27/2014
BSW-LR14-00191	LIBERTY	Residential	D2020083000028	02/27/2014
BSW-LR14-00192	LIBERTY	Residential	D2020303000049	02/27/2014
BSW-LR14-00193	FAIRFIELD	Residential	A0300166000061	02/27/2014
BSW-LR14-00194	FAIRFIELD	Residential	A0300127000033	02/27/2014
BSW-LR14-00195	FAIRFIELD	Residential	A0300165000073	02/27/2014

Total Permit Count from 01/01/2014 to 12/31/2014

<u>Permit #</u>	<u>Township</u>	<u>Category</u>	<u>Parcel #</u>	<u>Date Opened</u>
BSW-LR14-00196	WEST CHESTER	Residential	M5620472000022	02/27/2014
BSW-LR14-00197	WEST CHESTER	Residential	D2020055000034	02/27/2014
BSW-LR14-00208	MADISON	Residential	R8000022000094	02/28/2014
BSW-LR14-00209	LIBERTY	Residential	D2020304000055	02/28/2014
BSW-LC14-00211	WEST CHESTER	Commercial	M5620465000071	03/03/2014
BSW-LR14-00216	LIBERTY	Residential	D2020305000044	03/04/2014
BSW-LR14-00217	HANOVER	Residential	B1010009000016	03/04/2014
BSW-LR14-00218	LIBERTY	Residential	D2020283000026	03/04/2014
BSW-LR14-00219	LIBERTY	Residential	D2020282000119	03/04/2014
BSW-LR14-00220	LIBERTY	Residential	D2020304000031	03/04/2014
BSW-LR14-00221	LIBERTY	Residential	D2020303000017	03/04/2014
BSW-LR14-00222	LIBERTY	Residential	D2020281000074	03/04/2014
BSW-LC14-00247	WEST CHESTER	Commercial	M5610032000113	03/12/2014
BSW-LC14-00248	MADISON	Commercial	R8000031000007	03/12/2014
BSW-LR14-00249	ROSS	Residential	K4620099000006	03/14/2014
BSW-LR14-00250	LIBERTY	Residential	D2020305000045	03/14/2014
BSW-LR14-00251	LIBERTY	Residential	D2020282000121	03/14/2014
BSW-LR14-00252	WEST CHESTER	Residential	M5620472000023	03/14/2014
BSW-LR14-00264	LIBERTY	Residential	D2020043000020	03/19/2014

Total Permit Count from 01/01/2014 to 12/31/2014

<u>Permit #</u>	<u>Township</u>	<u>Category</u>	<u>Parcel #</u>	<u>Date Opened</u>
BSW-LR14-00265	LIBERTY	Residential	D2020303000062	03/19/2014
BSW-LR14-00266	WEST CHESTER	Residential	M5620427000015	03/19/2014
BSW-LR14-00267	WEST CHESTER	Residential	M5620424000029	03/19/2014
BSW-LR14-00268	WEST CHESTER	Residential	M5620427000011	03/19/2014
BSW-LR14-00269	LIBERTY	Residential	D2020305000037	03/19/2014
BSW-LR14-00270	FAIRFIELD	Residential	A0300159000026	03/19/2014
BSW-LR14-00271	LIBERTY	Residential	D2020247000049	03/19/2014
BSW-LR14-00272	FAIRFIELD	Residential	A0300144000119	03/19/2014
BSW-LR14-00273	LIBERTY	Residential	D2020299000017	03/19/2014
BSW-LR14-00276	LIBERTY	Residential	D2020305000005	03/21/2014
BSW-LR14-00277	LIBERTY	Residential	D2020247000078	03/21/2014
BSW-LR14-00278	LIBERTY	Residential	D2020281000063	03/21/2014
BSW-LR14-00279	LIBERTY	Residential	D2020281000059	03/21/2014
BSW-LR14-00280	LIBERTY	Residential	D2020296000032	03/21/2014
BSW-LR14-00281	LIBERTY	Residential	D2020285000037	03/21/2014
BSW-LR14-00289	FAIRFIELD	Residential	A0300165000064	03/27/2014
BSW-LR14-00297	WEST CHESTER	Residential	M5620461000004	03/31/2014
BSW-LR14-00298	FAIRFIELD	Residential	A0300165000050	03/31/2014
BSW-LR14-00299	LIBERTY	Residential	D2020054000025	03/31/2014

Total Permit Count from 01/01/2014 to 12/31/2014

<u>Permit #</u>	<u>Township</u>	<u>Category</u>	<u>Parcel #</u>	<u>Date Opened</u>
BSW-LR14-00300	LIBERTY	Residential	D2020122000091	03/31/2014
BSW-LR14-00301	MADISON	Residential	R8000041000009	03/31/2014
BSW-LR14-00309	LIBERTY	Residential	D2020247000058	04/02/2014
BSW-LR14-00310	FAIRFIELD	Residential	A0300144000144	04/02/2014
BSW-LR14-00311	LIBERTY	Residential	D2020083000018	04/02/2014
BSW-LR14-00312	LIBERTY	Residential	D2020303000064	04/02/2014
BSW-LR14-00313	LIBERTY	Residential	D2020299000074	04/02/2014
BSW-LR14-00314	ROSS	Residential	K4620031000032	04/02/2014
BSW-LR14-00316	LIBERTY	Residential	D2020304000030	04/04/2014
BSW-LR14-00317	LIBERTY	Residential	D2020178000028	04/04/2014
BSW-LR14-00318	LIBERTY	Residential	D2020300000054	04/04/2014
BSW-LR14-00327	MADISON	Residential	R8000028000074	04/08/2014
BSW-LR14-00333	MADISON	Residential	E2220080000055	04/09/2014
BSW-LR14-00334	LIBERTY	Residential	D2020292000030	04/09/2014
BSW-LR14-00335	LIBERTY	Residential	D2020301000019	04/09/2014
BSW-LR14-00336	FAIRFIELD	Residential	A0300071000148	04/09/2014
BSW-LR14-00337	WEST CHESTER	Residential	M5610004000082	04/09/2014
BSW-LR14-00338	WEST CHESTER	Residential	M5610004000082	04/09/2014
BSW-LR14-00347	FAIRFIELD	Residential	A0300155000012	04/14/2014

Total Permit Count from 01/01/2014 to 12/31/2014

<u>Permit #</u>	<u>Township</u>	<u>Category</u>	<u>Parcel #</u>	<u>Date Opened</u>
BSW-LR14-00348	LIBERTY	Residential	D2020303000065	04/14/2014
BSW-LR14-00351	LIBERTY	Residential	D2020305000041	04/15/2014
BSW-LR14-00355	LIBERTY	Residential	D2020303000026	04/16/2014
BSW-LR14-00356	LIBERTY	Residential	D2020281000049	04/16/2014
BSW-LR14-00357	LIBERTY	Residential	D2020054000042	04/16/2014
BSW-LR14-00370	LIBERTY	Residential	D2020283000043	04/21/2014
BSW-LR14-00371	FAIRFIELD	Residential	A0300169000014	04/21/2014
BSW-LR14-00372	WEST CHESTER	Residential	M5620472000021	04/21/2014
BSW-LR14-00373	FAIRFIELD	Residential	A0300165000065	04/21/2014
BSW-LR14-00374	LIBERTY	Residential	D2020304000045	04/21/2014
BSW-LR14-00389	FAIRFIELD	Residential	A0300149000041	04/24/2014
BSW-LR14-00391	LIBERTY	Residential	D2020308000016	04/24/2014
BSW-LR14-00392	LIBERTY	Residential	D2020282000110	04/24/2014
BSW-LR14-00393	LIBERTY	Residential	D2020054000083	04/24/2014
BSW-LR14-00394	WEST CHESTER	Residential	M5620434000115	04/24/2014
BSW-LC14-00397	MADISON	Commercial	E2310004000003	04/26/2014
BSW-LR14-00398	WEST CHESTER	Residential	M5620472000020	04/29/2014
BSW-LR14-00399	LIBERTY	Residential	D2020281000070	04/29/2014
BSW-LC14-00425	WEST CHESTER	Commercial	M5620465000007	05/01/2014

Total Permit Count from 01/01/2014 to 12/31/2014

<u>Permit #</u>	<u>Township</u>	<u>Category</u>	<u>Parcel #</u>	<u>Date Opened</u>
BSW-LC14-00432	LIBERTY	Commercial	D2050029000053	05/01/2014
BSW-LC14-00434	WEST CHESTER	Commercial	M5610009000013	05/01/2014
BSW-LR14-00407	LIBERTY	Residential	D2020083000019	05/01/2014
BSW-LR14-00408	FAIRFIELD	Residential	A0300149000008	05/01/2014
BSW-LR14-00409	LIBERTY	Residential	D2020305000004	05/01/2014
BSW-LR14-00410	LIBERTY	Residential	D2020304000049	05/01/2014
BSW-LR14-00411	LIBERTY	Residential	D2020299000073	05/01/2014
BSW-LR14-00412	LIBERTY	Residential	D2020083000032	05/01/2014
BSW-LR14-00413	LIBERTY	Residential	D2020083000031	05/01/2014
BSW-LR14-00414	WEST CHESTER	Residential	M5620467000027	05/01/2014
BSW-LR14-00415	WEST CHESTER	Residential	M5620467000010	05/01/2014
BSW-LR14-00416	LIBERTY	Residential	D2020043000022	05/01/2014
BSW-LR14-00417	LIBERTY	Residential	D2020305000010	05/01/2014
BSW-LR14-00418	WEST CHESTER	Residential	M5620095000055	05/01/2014
BSW-LR14-00419	LIBERTY	Residential	D2020298000043	05/01/2014
BSW-LR14-00420	LIBERTY	Residential	D2020083000037	05/01/2014
BSW-LR14-00421	LIBERTY	Residential	D2020300000038	05/01/2014
BSW-LR14-00422	LIBERTY	Residential	D2020281000057	05/01/2014
BSW-LR14-00423	LIBERTY	Residential	D2010017000125	05/01/2014

Total Permit Count from 01/01/2014 to 12/31/2014

<u>Permit #</u>	<u>Township</u>	<u>Category</u>	<u>Parcel #</u>	<u>Date Opened</u>
BSW-LR14-00424	LIBERTY	Residential	D2010017000125	05/01/2014
BSW-LC14-00440	WEST CHESTER	Commercial	M5620465000003	05/02/2014
BSW-LC14-00441	WEST CHESTER	Commercial	M5620465000006	05/02/2014
BSW-LR14-00461	LIBERTY	Residential	D2020054000053	05/08/2014
BSW-LR14-00462	LIBERTY	Residential	D2020304000039	05/08/2014
BSW-LR14-00463	LIBERTY	Residential	D2020303000027	05/08/2014
BSW-LR14-00464	LIBERTY	Residential	D2020282000072	05/08/2014
BSW-LR14-00465	WEST CHESTER	Residential	M5620472000019	05/08/2014
BSW-LR14-00481	LIBERTY	Residential	D2020247000055	05/16/2014
BSW-LR14-00482	LIBERTY	Residential	D2020305000018	05/16/2014
BSW-LR14-00483	LIBERTY	Residential	D2020252000032	05/16/2014
BSW-LR14-00484	LIBERTY	Residential	D2020054000070	05/16/2014
BSW-LR14-00485	FAIRFIELD	Residential	A0300147000142	05/16/2014
BSW-LR14-00486	LIBERTY	Residential	D2020054000067	05/16/2014
BSW-LR14-00487	LIBERTY	Residential	D2020296000042	05/16/2014
BSW-LR14-00488	FAIRFIELD	Residential	A0300165000062	05/16/2014
BSW-LR14-00489	WEST CHESTER	Residential	M5620381000102	05/16/2014
BSW-LR14-00490	LIBERTY	Residential	D2020285000042	05/16/2014
BSW-LR14-00491	LIBERTY	Residential	D2020247000080	05/16/2014

Total Permit Count from 01/01/2014 to 12/31/2014

<u>Permit #</u>	<u>Township</u>	<u>Category</u>	<u>Parcel #</u>	<u>Date Opened</u>
BSW-LR14-00492	WEST CHESTER	Residential	M5620467000026	05/16/2014
BSW-LR14-00493	LIBERTY	Residential	D2020252000038	05/16/2014
BSW-LR14-00494	LIBERTY	Residential	D2020252000033	05/16/2014
BSW-LR14-00499	MADISON	Residential	R8000022000110	05/20/2014
BSW-LR14-00500	WEST CHESTER	Residential	M5620457000039	05/20/2014
BSW-LR14-00501	WEST CHESTER	Residential	M5620468000017	05/20/2014
BSW-LR14-00502	WEST CHESTER	Residential	M5620472000016	05/20/2014
BSW-LR14-00503	FAIRFIELD	Residential	A0300149000038	05/20/2014
BSW-LR14-00516	FAIRFIELD	Residential	A0300158000018	05/27/2014
BSW-LR14-00517	LIBERTY	Residential	D2020054000071	05/27/2014
BSW-LR14-00530	FAIRFIELD	Residential	A0300147000124	06/02/2014
BSW-LR14-00531	LIBERTY	Residential	D2020055000035	06/03/2014
BSW-LR14-00532	LIBERTY	Residential	D2020083000033	06/03/2014
BSW-LR14-00533	WEST CHESTER	Residential	M5620468000016	06/03/2014
BSW-LR14-00534	LIBERTY	Residential	D2020282000111	06/03/2014
BSW-LR14-00535	LIBERTY	Residential	D2020296000018	06/03/2014
BSW-LR14-00536	LIBERTY	Residential	D2020054000060	06/03/2014
BSW-LR14-00537	FAIRFIELD	Residential	A0300165000048	06/03/2014
BSW-LR14-00538	LIBERTY	Residential	D2020107000034	06/03/2014

Total Permit Count from 01/01/2014 to 12/31/2014

<u>Permit #</u>	<u>Township</u>	<u>Category</u>	<u>Parcel #</u>	<u>Date Opened</u>
BSW-LR14-00539	ROSS	Residential	K4620102000054	06/03/2014
BSW-LR14-00540	MADISON	Residential	E2220080000053	06/03/2014
BSW-LC14-00550	OXFORD	Commercial	H3900040000023	06/06/2014
BSW-LR14-00551	WEST CHESTER	Residential	M5610005000017	06/06/2014
BSW-LR14-00552	LIBERTY	Residential	D2020305000007	06/06/2014
BSW-LR14-00553	LIBERTY	Residential	D2020083000040	06/06/2014
BSW-LR14-00554	LIBERTY	Residential	D2020300000001	06/06/2014
BSW-LR14-00555	LIBERTY	Residential	D2020300000013	06/06/2014
BSW-LR14-00558	MADISON	Residential	R8000022000008	06/10/2014
BSW-LR14-00562	LIBERTY	Residential	D2020308000003	06/10/2014
BSW-LR14-00563	LIBERTY	Residential	D2020308000018	06/10/2014
BSW-LR14-00564	LIBERTY	Residential	D2020256000024	06/10/2014
BSW-LR14-00566	FAIRFIELD	Residential	A0300158000044	06/10/2014
BSW-LR14-00567	LIBERTY	Residential	D2020230000022	06/10/2014
BSW-LR14-00568	LIBERTY	Residential	D2020296000041	06/10/2014
BSW-LC14-00570	WEST CHESTER	Commercial	M5610009000069	06/11/2014
BSW-LC14-00571	WEST CHESTER	Commercial	M5610008000058	06/11/2014
BSW-LC14-00572	WEST CHESTER	Commercial	M5620449000007	06/11/2014
BSW-LR14-00586	WEST CHESTER	Residential	M5620381000144	06/16/2014

Total Permit Count from 01/01/2014 to 12/31/2014

<u>Permit #</u>	<u>Township</u>	<u>Category</u>	<u>Parcel #</u>	<u>Date Opened</u>
BSW-LR14-00587	LIBERTY	Residential	D2020282000120	06/16/2014
BSW-LR14-00588	LIBERTY	Residential	D2020282000112	06/16/2014
BSW-LR14-00589	LIBERTY	Residential	D2020283000023	06/16/2014
BSW-LR14-00590	LIBERTY	Residential	D2020304000012	06/16/2014
BSW-LR14-00594	LIBERTY	Residential	D2020296000037	06/17/2014
BSW-LR14-00597	FAIRFIELD	Residential	A0300017000024	06/18/2014
BSW-LC14-00605	WEST CHESTER	Commercial	M5610024000017	06/23/2014
BSW-LR14-00608	ROSS	Residential	K4620102000078	06/23/2014
BSW-LR14-00609	LIBERTY	Residential	D2020083000038	06/23/2014
BSW-LR14-00610	LIBERTY	Residential	D2020281000075	06/23/2014
BSW-LR14-00615	LIBERTY	Residential	D2020083000036	06/25/2014
BSW-LR14-00616	LIBERTY	Residential	D2020300000017	06/25/2014
BSW-LR14-00617	LIBERTY	Residential	D2020300000007	06/25/2014
BSW-LR14-00618	ROSS	Residential	K4620103000041	06/25/2014
BSW-LR14-00619	LIBERTY	Residential	D2020298000068	06/25/2014
BSW-LR14-00631	WEST CHESTER	Residential	M5620468000018	06/27/2014
BSW-LR14-00632	LIBERTY	Residential	D2020296000019	06/27/2014
BSW-LR14-00633	LIBERTY	Residential	D2020304000041	06/27/2014
BSW-LR14-00634	LIBERTY	Residential	D2020083000039	06/27/2014

Total Permit Count from 01/01/2014 to 12/31/2014

<u>Permit #</u>	<u>Township</u>	<u>Category</u>	<u>Parcel #</u>	<u>Date Opened</u>
BSW-LR14-00635	REILY	Residential	J4310024000039	06/27/2014
BSW-LR14-00636	FAIRFIELD	Residential	A0300158000047	06/27/2014
BSW-LR14-00637	LIBERTY	Residential	D2020083000030	06/27/2014
BSW-LR14-00638	ROSS	Residential	K4620102000079	06/27/2014
BSW-LR14-00639	LIBERTY	Residential	D2020122000095	06/27/2014
BSW-LC14-00665	LIBERTY	Commercial	D2010017000043	07/03/2014
BSW-LR14-00652	FAIRFIELD	Residential	A0300162000041	07/03/2014
BSW-LR14-00653	ROSS	Residential	K4620031000036	07/03/2014
BSW-LR14-00654	LIBERTY	Residential	D2010017000125	07/03/2014
BSW-LR14-00655	LIBERTY	Residential	D2010017000125	07/03/2014
BSW-LR14-00656	LIBERTY	Residential	D2010017000125	07/03/2014
BSW-LR14-00657	LIBERTY	Residential	D2010017000125	07/03/2014
BSW-LR14-00658	WEST CHESTER	Residential	M5620467000022	07/03/2014
BSW-LR14-00659	LIBERTY	Residential	D2020069000009	07/03/2014
BSW-LR14-00660	FAIRFIELD	Residential	A0300145000088	07/03/2014
BSW-LR14-00661	WEST CHESTER	Residential	M5620457000037	07/03/2014
BSW-LR14-00662	WEST CHESTER	Residential	M5620457000009	07/03/2014
BSW-LR14-00663	LIBERTY	Residential	D2020052000013	07/03/2014
BSW-LR14-00664	WEST CHESTER	Residential	M5620429000071	07/03/2014

Total Permit Count from 01/01/2014 to 12/31/2014

<u>Permit #</u>	<u>Township</u>	<u>Category</u>	<u>Parcel #</u>	<u>Date Opened</u>
BSW-LR14-00673	MADISON	Residential	R8000039000081	07/08/2014
BSW-LR14-00686	WEST CHESTER	Residential	M5620247000009	07/08/2014
BSW-LR14-00687	LIBERTY	Residential	D2020083000021	07/08/2014
BSW-LC14-00688	LIBERTY	Commercial	D2010017000125	07/09/2014
BSW-LR14-00699	FAIRFIELD	Residential	A0300165000068	07/14/2014
BSW-LR14-00700	LIBERTY	Residential	D2020304000047	07/14/2014
BSW-LR14-00701	LIBERTY	Residential	D2020162000049	07/14/2014
BSW-LR14-00702	LIBERTY	Residential	D2020299000071	07/14/2014
BSW-LR14-00703	LIBERTY	Residential	D2020301000062	07/14/2014
BSW-LR14-00704	LIBERTY	Residential	D2020298000067	07/14/2014
BSW-LR14-00711	LIBERTY	Residential	D2020069000014	07/15/2014
BSW-LR14-00712	LIBERTY	Residential	D2020300000037	07/15/2014
BSW-LR14-00713	LIBERTY	Residential	D2020298000044	07/15/2014
BSW-LR14-00714	FAIRFIELD	Residential	A0300165000063	07/15/2014
BSW-LR14-00715	FAIRFIELD	Residential	A0300147000122	07/15/2014
BSW-LR14-00716	FAIRFIELD	Residential	A0300147000136	07/15/2014
BSW-LR14-00717	LIBERTY	Residential	D2020305000043	07/15/2014
BSW-LR14-00718	LIBERTY	Residential	D2020309000005	07/15/2014
BSW-LR14-00719	LIBERTY	Residential	D2020304000029	07/15/2014

Total Permit Count from 01/01/2014 to 12/31/2014

<u>Permit #</u>	<u>Township</u>	<u>Category</u>	<u>Parcel #</u>	<u>Date Opened</u>
BSW-LR14-00720	LIBERTY	Residential	D2020309000006	07/15/2014
BSW-LR14-00721	LIBERTY	Residential	D2020298000071	07/15/2014
BSW-LR14-00722	LIBERTY	Residential	D2020283000037	07/15/2014
BSW-LR14-00724	LIBERTY	Residential	D2020282000101	07/16/2014
BSW-LR14-00725	FAIRFIELD	Residential	A0300145000095	07/16/2014
BSW-LR14-00726	HANOVER	Residential	B1020139000030	07/16/2014
BSW-LR14-00727	LIBERTY	Residential	D2020305000031	07/16/2014
BSW-LR14-00728	FAIRFIELD	Residential	A0300165000049	07/16/2014
BSW-LC14-00733	LIBERTY	Commercial	D2010008000029	07/18/2014
BSW-LC14-00734	LIBERTY	Commercial	D2020057000009	07/18/2014
BSW-LC14-00736	WEST CHESTER	Commercial	M5620285000001	07/18/2014
BSW-LR14-00762	WEST CHESTER	Residential	M5620247000008	07/30/2014
BSW-LR14-00763	LIBERTY	Residential	D2020282000116	07/30/2014
BSW-LR14-00764	LIBERTY	Residential	D2020230000029	07/30/2014
BSW-LR14-00765	LIBERTY	Residential	D2020286000040	07/30/2014
BSW-LR14-00768	LIBERTY	Residential	D2020083000029	07/31/2014
BSW-LR14-00770	LIBERTY	Residential	D2020069000020	07/31/2014
BSW-LR14-00771	LIBERTY	Residential	D2020122000088	07/31/2014
BSW-LR14-00772	FAIRFIELD	Residential	A0300164000011	07/31/2014

Total Permit Count from 01/01/2014 to 12/31/2014

<u>Permit #</u>	<u>Township</u>	<u>Category</u>	<u>Parcel #</u>	<u>Date Opened</u>
BSW-LR14-00773	FAIRFIELD	Residential	A0300027000081	07/31/2014
BSW-LR14-00774	LIBERTY	Residential	D2020281000081	07/31/2014
BSW-LR14-00775	WEST CHESTER	Residential	M5620457000025	07/31/2014
BSW-LR14-00776	WEST CHESTER	Residential	M5620463000033	07/31/2014
BSW-LR14-00777	LIBERTY	Residential	D2020305000048	07/31/2014
BSW-LR14-00778	LIBERTY	Residential	D2020300000005	07/31/2014
BSW-LR14-00780	LIBERTY	Residential	D2020300000014	07/31/2014
BSW-LR14-00782	LIBERTY	Residential	D2020306000004	07/31/2014
BSW-LR14-00783	LIBERTY	Residential	D2020296000012	07/31/2014
BSW-LR14-00784	LIBERTY	Residential	D2020069000015	07/31/2014
BSW-LR14-00785	LIBERTY	Residential	D2020282000107	07/31/2014
BSW-LR14-00786	LIBERTY	Residential	D2020122000094	07/31/2014
BSW-LR14-00787	LIBERTY	Residential	D2020286000020	08/01/2014
BSW-LR14-00788	MADISON	Residential	E2210017000022	08/01/2014
BSW-LR14-00789	WEST CHESTER	Residential	M5620451000022	08/01/2014
BSW-LR14-00790	LIBERTY	Residential	D2020282000108	08/01/2014
BSW-LR14-00791	WEST CHESTER	Residential	M5620472000028	08/01/2014
BSW-LR14-00804	LIBERTY	Residential	D2020286000047	08/07/2014
BSW-LR14-00805	LIBERTY	Residential	D2020247000076	08/07/2014

Total Permit Count from 01/01/2014 to 12/31/2014

<u>Permit #</u>	<u>Township</u>	<u>Category</u>	<u>Parcel #</u>	<u>Date Opened</u>
BSW-LR14-00806	FAIRFIELD	Residential	A0300165000075	08/07/2014
BSW-LR14-00807	LIBERTY	Residential	D2020083000034	08/07/2014
BSW-LR14-00808	LIBERTY	Residential	D2010028000032	08/07/2014
BSW-LC14-00820	WEST CHESTER	Commercial	M5610031000095	08/13/2014
BSW-LC14-00826	WEST CHESTER	Commercial	M5810001000007	08/18/2014
BSW-LR14-00827	WEST CHESTER	Residential	M5620472000030	08/18/2014
BSW-LR14-00828	LIBERTY	Residential	D2020122000086	08/18/2014
BSW-LR14-00830	LIBERTY	Residential	D2020305000038	08/18/2014
BSW-LR14-00831	LIBERTY	Residential	D2020300000006	08/18/2014
BSW-LR14-00832	LIBERTY	Residential	D2020280000033	08/18/2014
BSW-LR14-00833	LIBERTY	Residential	D2020055000037	08/18/2014
BSW-LR14-00835	WEST CHESTER	Residential	M5620433000036	08/19/2014
BSW-LR14-00841	LIBERTY	Residential	D2020278000035	08/20/2014
BSW-LR14-00842	LIBERTY	Residential	D2020252000037	08/20/2014
BSW-LR14-00852	FAIRFIELD	Residential	A0300158000022	08/25/2014
BSW-LR14-00853	LIBERTY	Residential	D2020300000047	08/25/2014
BSW-LR14-00854	LIBERTY	Residential	D2020281000082	08/25/2014
BSW-LR14-00855	WEST CHESTER	Residential	M5620463000036	08/25/2014
BSW-LR14-00856	WEST CHESTER	Residential	M5620095000054	08/25/2014

Total Permit Count from 01/01/2014 to 12/31/2014

<u>Permit #</u>	<u>Township</u>	<u>Category</u>	<u>Parcel #</u>	<u>Date Opened</u>
BSW-LR14-00858	LIBERTY	Residential	D2020310000001	08/25/2014
BSW-LR14-00861	LIBERTY	Residential	D2020054000081	08/26/2014
BSW-LR14-00862	WEST CHESTER	Residential	M5620247000014	08/26/2014
BSW-LR14-00863	WEST CHESTER	Residential	M5620225000093	08/26/2014
BSW-LR14-00864	LIBERTY	Residential	D2020076000041	08/26/2014
BSW-LR14-00865	ROSS	Residential	K4620031000035	08/26/2014
BSW-LC14-00872	OXFORD	Commercial	F2700030000002	08/27/2014
BSW-LC14-00886	LIBERTY	Commercial	D2010001000100	09/03/2014
BSW-LR14-00887	LIBERTY	Residential	D2020274000050	09/03/2014
BSW-LR14-00888	WEST CHESTER	Residential	M5620381000151	09/03/2014
BSW-LR14-00889	LIBERTY	Residential	D2020230000027	09/03/2014
BSW-LR14-00890	FAIRFIELD	Residential	A0300165000006	09/03/2014
BSW-LR14-00891	WEST CHESTER	Residential	M5620472000027	09/03/2014
BSW-LR14-00892	WEST CHESTER	Residential	M5620463000037	09/03/2014
BSW-LR14-00901	ROSS	Residential	K4620107000025	09/08/2014
BSW-LR14-00902	LIBERTY	Residential	D2020054000063	09/08/2014
BSW-LR14-00903	WEST CHESTER	Residential	M5620467000024	09/08/2014
BSW-LR14-00904	LIBERTY	Residential	D2020300000041	09/08/2014
BSW-LR14-00905	LIBERTY	Residential	D2020247000050	09/08/2014

Total Permit Count from 01/01/2014 to 12/31/2014

<u>Permit #</u>	<u>Township</u>	<u>Category</u>	<u>Parcel #</u>	<u>Date Opened</u>
BSW-LR14-00915	REILY	Residential	J4310017000003	09/08/2014
BSW-LR14-00916	LIBERTY	Residential	D2020239000020	09/08/2014
BSW-LR14-00917	LIBERTY	Residential	D2020240000012	09/08/2014
BSW-LR14-00918	LIBERTY	Residential	D2020122000116	09/08/2014
BSW-LR14-00919	LIBERTY	Residential	D2020122000118	09/08/2014
BSW-LR14-00920	WEST CHESTER	Residential	M5620247000019	09/08/2014
BSW-LC14-00922	LIBERTY	Commercial	D2010017000094	09/09/2014
BSW-LR14-00938	LIBERTY	Residential	D2020281000083	09/15/2014
BSW-LR14-00939	WEST CHESTER	Residential	M5610027000034	09/15/2014
BSW-LR14-00946	LIBERTY	Residential	D2020122000090	09/15/2014
BSW-LR14-00947	FAIRFIELD	Residential	A0300165000074	09/15/2014
BSW-LR14-00948	LIBERTY	Residential	D2020200000023	09/15/2014
BSW-LR14-00949	LIBERTY	Residential	D2020303000019	09/15/2014
BSW-LR14-00950	LIBERTY	Residential	D2020286000023	09/15/2014
BSW-LR14-00951	ROSS	Residential	K4620091000042	09/16/2014
BSW-LC14-00956	WEST CHESTER	Commercial	M5620440000031	09/18/2014
BSW-LR14-00957	LIBERTY	Residential	D2020286000034	09/18/2014
BSW-LR14-00958	LIBERTY	Residential	D2020212000007	09/18/2014
BSW-LR14-00959	FAIRFIELD	Residential	A0300147000129	09/18/2014

Total Permit Count from 01/01/2014 to 12/31/2014

<u>Permit #</u>	<u>Township</u>	<u>Category</u>	<u>Parcel #</u>	<u>Date Opened</u>
BSW-LR14-00960	WEST CHESTER	Residential	M5620472000018	09/18/2014
BSW-LR14-00964	FAIRFIELD	Residential	A0300158000020	09/22/2014
BSW-LR14-00965	LIBERTY	Residential	D2020296000025	09/22/2014
BSW-LR14-00966	LIBERTY	Residential	D2020054000080	09/22/2014
BSW-LR14-00967	WEST CHESTER	Residential	M5620381000156	09/22/2014
BSW-LC14-00981	LIBERTY	Commercial	D2010017000125	09/24/2014
BSW-LC14-00982	LIBERTY	Commercial	D2020057000031	09/24/2014
BSW-LR14-01002	FAIRFIELD	Residential	A0300158000039	10/01/2014
BSW-LR14-01003	LIBERTY	Residential	D2020303000041	10/01/2014
BSW-LR14-01004	LIBERTY	Residential	D2020303000040	10/01/2014
BSW-LR14-01005	LIBERTY	Residential	D2020077000018	10/01/2014
BSW-LR14-01006	FAIRFIELD	Residential	A0300169000021	10/01/2014
BSW-LR14-01007	LIBERTY	Residential	D2020230000024	10/01/2014
BSW-LR14-01008	LIBERTY	Residential	D2020247000056	10/01/2014
BSW-LR14-01009	FAIRFIELD	Residential	A0300165000046	10/01/2014
BSW-LR14-01010	FAIRFIELD	Residential	A0300165000051	10/01/2014
BSW-LR14-01011	LIBERTY	Residential	D2020122000123	10/01/2014
BSW-LR14-01012	LIBERTY	Residential	D2020282000124	10/01/2014
BSW-LR14-01013	WEST CHESTER	Residential	M5620247000010	10/01/2014

Total Permit Count from 01/01/2014 to 12/31/2014

<u>Permit #</u>	<u>Township</u>	<u>Category</u>	<u>Parcel #</u>	<u>Date Opened</u>
BSW-LR14-01014	ROSS	Residential	K4620102000077	10/01/2014
BSW-LC14-01017	FAIRFIELD	Commercial	A0300027000082	10/03/2014
BSW-LR14-01028	LIBERTY	Residential	D2020054000062	10/09/2014
BSW-LR14-01029	LIBERTY	Residential	D2020069000016	10/09/2014
BSW-LR14-01030	LIBERTY	Residential	D2020305000042	10/09/2014
BSW-LR14-01031	LIBERTY	Residential	D2020308000015	10/09/2014
BSW-LR14-01032	LIBERTY	Residential	D2020305000030	10/09/2014
BSW-LR14-01033	WEST CHESTER	Residential	M5620462000014	10/09/2014
BSW-LR14-01034	LIBERTY	Residential	D2020298000056	10/09/2014
BSW-LR14-01035	FAIRFIELD	Residential	A0300145000103	10/09/2014
BSW-LR14-01036	LIBERTY	Residential	D2020304000003	10/09/2014
BSW-LR14-01037	LIBERTY	Residential	D2020266000052	10/09/2014
BSW-LR14-01038	LIBERTY	Residential	D2020305000035	10/09/2014
BSW-LR14-01039	LIBERTY	Residential	D2020301000039	10/09/2014
BSW-LC14-01044	WEST CHESTER	Commercial	M5610020000150	10/13/2014
BSW-LR14-01051	WEST CHESTER	Residential	M5620472000025	10/16/2014
BSW-LR14-01052	LIBERTY	Residential	D2020122000122	10/16/2014
BSW-LC14-01054	WEST CHESTER	Commercial	M5620282000029	10/17/2014
BSW-LR14-01057	WEST CHESTER	Residential	M5620461000016	10/20/2014

Total Permit Count from 01/01/2014 to 12/31/2014

<u>Permit #</u>	<u>Township</u>	<u>Category</u>	<u>Parcel #</u>	<u>Date Opened</u>
BSW-LR14-01063	LIBERTY	Residential	D2020247000073	10/22/2014
BSW-LR14-01064	LIBERTY	Residential	D2020181000017	10/23/2014
BSW-LR14-01065	LIBERTY	Residential	D2020181000019	10/23/2014
BSW-LR14-01066	LIBERTY	Residential	D2020181000016	10/23/2014
BSW-LR14-01067	LIBERTY	Residential	D2020069000020	10/23/2014
BSW-LR14-01068	LIBERTY	Residential	D2020181000018	10/23/2014
BSW-LR14-01069	WEST CHESTER	Residential	M5620381000150	10/23/2014
BSW-LC14-01086	WEST CHESTER	Commercial	M5620180000030	10/24/2014
BSW-LR14-01074	LIBERTY	Residential	D2020281000094	10/24/2014
BSW-LR14-01075	LIBERTY	Residential	D2020069000019	10/24/2014
BSW-LR14-01076	ROSS	Residential	K4620103000038	10/24/2014
BSW-LR14-01077	LIBERTY	Residential	D2020300000010	10/24/2014
BSW-LR14-01078	FAIRFIELD	Residential	A0300158000021	10/24/2014
BSW-LR14-01079	FAIRFIELD	Residential	A0300158000021	10/24/2014
BSW-LR14-01080	LIBERTY	Residential	D2020069000017	10/24/2014
BSW-LR14-01081	WEST CHESTER	Residential	M5620095000059	10/24/2014
BSW-LR14-01093	LIBERTY	Residential	D2020122000117	10/28/2014
BSW-LR14-01094	FAIRFIELD	Residential	A0300147000137	10/28/2014
BSW-LR14-01095	LIBERTY	Residential	D2020282000117	10/28/2014

Total Permit Count from 01/01/2014 to 12/31/2014

<u>Permit #</u>	<u>Township</u>	<u>Category</u>	<u>Parcel #</u>	<u>Date Opened</u>
BSW-LR14-01096	FAIRFIELD	Residential	A0300147000133	10/28/2014
BSW-LR14-01097	WEST CHESTER	Residential	M5620066000012	10/28/2014
BSW-LR14-01098	LIBERTY	Residential	D2020055000036	10/28/2014
BSW-LR14-01099	LIBERTY	Residential	D2020230000025	10/28/2014
BSW-LR14-01100	LIBERTY	Residential	D2020230000023	10/28/2014
BSW-LR14-01101	FAIRFIELD	Residential	A0300145000102	10/28/2014
BSW-LR14-01102	WEST CHESTER	Residential	M5620381000154	10/28/2014
BSW-LC14-01107	FAIRFIELD	Commercial	A0300011000024	10/30/2014
BSW-LC14-01110	WEST CHESTER	Commercial	M5610024000116	10/30/2014
BSW-LR14-01121	FAIRFIELD	Residential	A0300165000067	11/05/2014
BSW-LR14-01122	LIBERTY	Residential	D2020296000044	11/05/2014
BSW-LR14-01123	LIBERTY	Residential	D2020303000004	11/05/2014
BSW-LR14-01124	LIBERTY	Residential	D2020213000025	11/05/2014
BSW-LR14-01125	LIBERTY	Residential	D2020283000027	11/05/2014
BSW-LR14-01133	LIBERTY	Residential	D2020122000087	11/12/2014
BSW-LR14-01134	FAIRFIELD	Residential	A0300147000138	11/12/2014
BSW-LR14-01135	LIBERTY	Residential	D2020252000040	11/12/2014
BSW-LR14-01136	WEST CHESTER	Residential	M5620467000023	11/12/2014
BSW-LR14-01157	FAIRFIELD	Residential	A0300145000084	11/19/2014

Total Permit Count from 01/01/2014 to 12/31/2014

<u>Permit #</u>	<u>Township</u>	<u>Category</u>	<u>Parcel #</u>	<u>Date Opened</u>
BSW-LR14-01158	WEST CHESTER	Residential	M5620381000155	11/19/2014
BSW-LC14-01168	WEST CHESTER	Commercial	M5610003000035	11/20/2014
BSW-LR14-01161	LIBERTY	Residential	D2020303000022	11/20/2014
BSW-LR14-01162	LIBERTY	Residential	D2020310000003	11/20/2014
BSW-LR14-01163	LIBERTY	Residential	D2020266000049	11/20/2014
BSW-LR14-01164	LIBERTY	Residential	D2020083000049	11/20/2014
BSW-LR14-01165	WEST CHESTER	Residential	M5620247000021	11/20/2014
BSW-LR14-01166	LIBERTY	Residential	D2020252000048	11/20/2014
BSW-LR14-01167	LIBERTY	Residential	D2020283000019	11/20/2014
BSW-LC14-01176	WEST CHESTER	Commercial	M5610020000132	11/21/2014
BSW-LR14-01174	MADISON	Residential	R8000041000016	11/21/2014
BSW-LR14-01175	MADISON	Residential	R8000041000026	11/21/2014
BSW-LC14-01193	FAIRFIELD	Commercial	A0300019000014	11/25/2014
BSW-LC14-01194	WEST CHESTER	Commercial	M5610008000060	11/25/2014
BSW-LR14-01182	LIBERTY	Residential	D2020305000002	11/25/2014
BSW-LR14-01183	LIBERTY	Residential	D2020309000013	11/25/2014
BSW-LR14-01184	LIBERTY	Residential	D2020122000120	11/25/2014
BSW-LR14-01185	LIBERTY	Residential	D2020309000013	11/25/2014
BSW-LR14-01185	LIBERTY	Residential	D2020309000012	11/25/2014

Total Permit Count from 01/01/2014 to 12/31/2014

<u>Permit #</u>	<u>Township</u>	<u>Category</u>	<u>Parcel #</u>	<u>Date Opened</u>
BSW-LR14-01186	LIBERTY	Residential	D2020303000047	11/25/2014
BSW-LR14-01187	LIBERTY	Residential	D2020252000035	11/25/2014
BSW-LR14-01188	FAIRFIELD	Residential	A0300158000052	11/25/2014
BSW-LR14-01198	MADISON	Residential	R8000028000088	11/26/2014
BSW-LR14-01201	FAIRFIELD	Residential	A0300029000112	12/02/2014
BSW-LR14-01216	FAIRFIELD	Residential	A0300147000134	12/08/2014
BSW-LR14-01217	LIBERTY	Residential	D2020286000010	12/08/2014
BSW-LR14-01218	LIBERTY	Residential	D2020252000043	12/08/2014
BSW-LR14-01219	FAIRFIELD	Residential	A0300165000069	12/08/2014
BSW-LR14-01221	LIBERTY	Residential	D2020283000025	12/09/2014
BSW-LR14-01222	LIBERTY	Residential	D2020259000034	12/09/2014
BSW-LR14-01224	LIBERTY	Residential	D2020069000008	12/09/2014
BSW-LR14-01233	MADISON	Residential	R8000041000018	12/11/2014
BSW-LC14-01236	LIBERTY	Commercial	D2010017000094	12/12/2014
BSW-LR14-01237	WEST CHESTER	Residential	M5620421000031	12/12/2014
BSW-LR14-01238	LIBERTY	Residential	D2020283000036	12/12/2014
BSW-LR14-01239	FAIRFIELD	Residential	A0300147000130	12/12/2014
BSW-LR14-01240	FAIRFIELD	Residential	A0300147000139	12/12/2014
BSW-LC14-01243	WEST CHESTER	Commercial	M5620465000041	12/16/2014

Total Permit Count from 01/01/2014 to 12/31/2014

<u>Permit #</u>	<u>Township</u>	<u>Category</u>	<u>Parcel #</u>	<u>Date Opened</u>
BSW-LR14-01262	LIBERTY	Residential	D2020122000125	12/30/2014
BSW-LR14-01263	LIBERTY	Residential	D2020122000099	12/30/2014
BSW-LR14-01265	WEST CHESTER	Residential	M5620472000017	12/31/2014
BSW-LR14-01266	ROSS	Residential	K4620068000048	12/31/2014
BSW-LR14-01267	HANOVER	Residential	B1020139000001	12/31/2014
BSW-LR14-01268	WEST CHESTER	Residential	M5620461000029	12/31/2014
BSW-LR14-01269	LIBERTY	Residential	D2020234000019	12/31/2014
BSW-LR14-01270	LIBERTY	Residential	D2020306000001	12/31/2014
BSW-LR14-01271	LIBERTY	Residential	D2020306000020	12/31/2014
BSW-LR14-01272	LIBERTY	Residential	D2020304000048	12/31/2014
BSW-LR14-01273	LIBERTY	Residential	D2020300000015	12/31/2014
BSW-LR14-01274	LIBERTY	Residential	D2020305000023	12/31/2014

Total Permit Count: 504

Attachment “C”

Butler County Storm Water District Bonus Activities

B1

Activity: Watershed Signage

Date: 01/01/2014 - 12/31/2014

The Butler County Storm Water District is involved with watershed awareness and education throughout Butler County. This is accomplished in part by coordinating stream crossing sign installation with public awareness and education programs. In 2014 the existing signage was inventoried and assessed for maintenance needs. No additional signs were installed.

B2

Activity: Mill Creek Watershed Council

Date: 01/01/2014 – 01//2014

A representative from the Butler County Storm Water District served on the Board of Trustees and participated in quarterly meetings of the Mill Creek Watershed Council. The purpose of the Mill Creek Watershed Council is to maintain and enhance the asset-value of the Mill Creek by providing resources to the communities and the region to realize lasting benefits. The Mill Creek Watershed Council is a publicly funded, non-profit corporation representing all 37 political jurisdictions in the Mill Creek watershed. The Council acts as a forum for making watershed-based decisions by convening and coordinating meetings and projects related to the improvement of the Mill Creek. Through these forums, the Council invites public input on watershed-related issues. The full council meets quarterly at locations throughout the watershed and creates a quarterly newsletter, Voice of the Mill Creek, that is mailed to approximately 1400 addresses throughout the watershed. Please visit the following website for additional information: <http://www.millcreekwatershed.org/home.html>

B3

Activity: Water Management Association of Ohio & the Ohio Stormwater Association

Date: 01/01/2014 - 12/31/2014

A representative from the Butler County Storm Water District serves on the Board of Directors and attended Ohio Stormwater Association Committee Meetings. The Ohio Stormwater Association is a group of public and private citizens dedicated to advancing the management of stormwater and related natural resources through education, leadership, watershed-based coordination and technical assistance in Ohio. The Ohio Stormwater Association is a not-for-profit, non-political organization. The Ohio Stormwater Association is organized formally as the stormwater division of the Water Management Association of Ohio which maintains a 501(c)4 status. The Ohio Stormwater Association provides educational and networking opportunities for people focused on reducing the negative impacts of stormwater runoff. The Ohio Stormwater Association provides quarterly educational meetings on topics of interest to our members and helps to sponsor the **Ohio Stormwater Conference** being held each spring. This year the conference was held in **Akron, Ohio**. More than **600 people** attended five concurrent tracks over the course of two days.

B4

Activity: Miami Valley Storm Water Awareness Team

Date: 01/01/2014 – 12/31/2014

The Miami Valley Storm Water Awareness Team (SWAT) is a partnership of educational program providers that serve the regulated communities. The group's mission is to education through effective collaborations non-rural residents of the Miami Valley about how to reduce runoff pollution. Individual members of the SWAT want to strengthen connections among related programs and the regulated jurisdictions. A representative from the Butler County Storm Water District attended the SWAT meetings and participated in the creation and implementation of a Storm Water Communication Plan for public outreach and education activities.

B5**Activity: Classroom Presentation – Butler County Children’s Water Festival****Date: 10/10/2014**

The Butler County Water Festival was held October 10, 2014 at Miami University Hamilton. The "Hands on Day of Discovery" was attended by 1,282 fourth, fifth and sixth graders, and over 100 presenters and volunteers from across Butler County. A representative from the Butler County Storm Water District presented to 5 classrooms of children on the topics of impervious surfaces, non-point source pollution, and storm water runoff. The Butler County Storm Water District also supported the festival financially.

B7**Activity: Public Presentations - Earth Day (Hamilton, Ohio)****Date: 04/22/14**

More than 20 state, regional and local environmental organizations, including the Butler County Storm Water District, were at the event to encourage recycling, resource conservation and awareness of local environmental issues. An estimated 1,000 people stopped by to improve their environmental awareness. Butler County Storm Water District also supported the event financially.

B8**Activity: Public Presentations - EarthFest (Oxford, Ohio)****Date: 04/26/14**

The Butler Soil and Water Conservation District were at the event to encourage recycling, resource conservation and awareness of local environmental issues. Live music, informational displays and activities for children presented by numerous Miami and community groups were featured. An estimated 115 people stopped by to improve their environmental awareness.

B9**Activity: Public Presentations – Homearama – Water Quality Display****Date: 07/12/14 – 07/27/14**

The Regional Storm Water Collaborative constructed a rain garden on site for a Home-a-rama home owner and staffed an educational display with water quality information. It was estimated that approximately 60,000 people attended the event.

B10**Activity: Local Emergency Planning Committee (LEPC) Quarterly Meetings****Date: 01/01/2014 – 12/31/2014**

The Butler County Storm Water District is an active participant in the Local Emergency Planning Committee (BCLEPC). The BCLEPC is comprised of members representing several occupational categories: elected local officials, law enforcement, emergency management, fire fighting, first aid, health, local environment; hospital, transportation, electronic media, print media, community groups, facility owners and operators subject to EPCRA, interested citizens and non-elected local officials.

According to the Ohio State Emergency Response Commission (SERC), the LEPC shall prepare local hazardous materials emergency plans that indicate the facilities that use, produce, or store extremely hazardous substances within the county; serve as the repository for local reports filed under EPCRA; and direct local EPCRA implementation activities and perform associated outreach functions to increase the awareness and understanding of and compliance with the EPCRA program

B11**Activity: Storm Water Hotline – Regional Storm Water Collaborative****Date: 01/01/2014 – 12/31/2014**

The Butler County Storm Water District has partnered with the Regional Storm Water Collaborative to create a centralized storm water hotline number (513-946-3999) for Butler, Hamilton and Warren Counties and the newest collaborative member, Northern Kentucky. The Storm Water Hotline provides prompt service to residents in the tri-state region. The automated phone service directs the caller to the appropriate jurisdiction and enables citizens to call 24-hours a day, seven days a week to report any storm water concerns. The hotline number was publicized through the use billboard advertisements. For

more information on the Regional Storm Water Collaborative and the non-point source pollution advertising campaign, please visit <http://www.savelocalwaters.org>

B12

Activity: Website Database and Mapping - Butler County Stream Team

Date: 01/01/2014 - 12/31/2014

The Butler County Stream Team, a public volunteer stream monitoring group, maintains and continues to develop a website that is capable of displaying the location of all sampling sites and all associated data collected from 2006 – present. A Google Maps function has been integrated into the website to display the location of each individual sampling site. The site will allow the data to be searched by specific time period, individual site ID, municipality, watershed, and specific analyte. The user can generate graphs and reports specific to their interest. Photos depicting the physical conditions of each site can be included as well. The project was designed, funded and managed by the Butler County Storm Water District.

B13

Activity: Website and Content Management System – Miami Valley Stormwater Awareness Team

Date: 01/01/2014 - 12/31/2014

The Miami Valley Storm Water Awareness Team (MVSAT), a collaboration of education program providers and MS4s in the Great Miami River Watershed, maintains and continues to develop a new website. The purpose and function of this site is similar to the USEPA NPS Toolbox. The site serves as a clearinghouse for public education and outreach materials developed by members of the MVSAT. The website, and all its contents, are available for use by local municipalities and the general public. The project is designed, funded and managed by the Butler County Storm Water District.

B14

Activity: Illicit Discharge Brochure

Date: 10/10/2014

In an effort to inform the general public of hazards associated with illicit discharges and improper disposal of waste, the Butler County Storm Water District has distributed "Discover Storm Water" and "Discover Floods" Project WET activity guides to 1,282 children at the Butler County Water Festival.

B15

Activity: Local restoration and habitat improvement

Date: 01/01/2014 - 12/31/2014

Wildermuth Stream and Wetland restoration Project: Butler County Water and Sewer served as sponsor and project manager, with support from Butler County Storm Water District and MCWCC. Project is partially funded through Ohio EPA's 319 program, and will enhance and restore 20+ acres of riparian wetland along the East Fork of Mill Creek, as well as improve instream habitat conditions. Project objectives include improved water quality, improved habitat, and reduced flooding.

The Mill Creek Confluence Restoration Project: The project is a collaboration between MCWCC, Butler County Water and Sewer, Metropolitan Sewer District of Greater Cincinnati, and the City of Sharonville; the Project received a \$1.7 million Ohio Water Pollution Control Loan Fund through the Water Resource Restoration Sponsor Program (WRRSP) in late 2007. This project, will bring the confluence of the Mill Creek (main stem) and East Fork into attainment with Warm Water Habitat Aquatic Life Use standards. <http://www.oki.org/elements/DOC/Environment/WaterQuality/MillCreekHeadwatersProject.doc>

B16

Activity: Five Star Restoration Grant - Wetland Extended Detention Basin Project

Date: 01/01/2014 - 12/31/2014

Project partners continue to monitor an existing detention basin which was restored to a riparian wetland, principally to provide habitat and treat upland runoff before entering the Upper Mill Creek. The monitoring program was enacted by the partners to evaluate the efficiency of the wetland in its assimilation of pollutants following storm events. Serving as a natural method to treat non-point source runoff, the project also provides a local example of the type of palustrine environment that once existed in the Mill Creek Watershed before urban and suburban land uses dominated the landscape.

Project partners include the Butler SWCD, Butler County Stormwater District, Beckett Ridge HOA, Mill Creek Watershed Council, Ohio Department of Natural Resources, and Miami (OH) University's Institute of Environmental Sciences (IES)

B17

Activity: Rain Garden Installation at Voice of America Park

Date: 01/01/2009 - Present

Installation of the rain garden began in November of 2008. The selection and placement of plants was completed by the end of April 2009. The rain garden is located in a high traffic area directly in front of the "Boat House" facility. The display includes educational signage and is a great example of a residential application for rain gardens. The site continues to be inspected and maintained throughout the year as necessary.

B18

Activity: Monitor BMP's – Butler County Engineers Office

Date: 01/01/2014 - 12/31/2014

Several BMPs for the Butler County Engineer's Office were designed and installed at the property located at 1921 Fairgrove Avenue in Hamilton, Ohio. The facility improvements include a bioretention area, two oil & grit separators, and a water quality pond. The design of the bioretention area allows for the collection and treatment of storm water runoff from existing paved areas. In addition to providing pollutant removal, the bioretention facility adds aesthetic appeal to a currently bare area. The best management practices are inspected and maintained throughout the year as necessary.

B19

Activity: Watershed Monitoring Network - Pilot Study-Four Mile Creek

Date: 01/01/2009 – Present

The Butler County Storm Water District (BCSWD) recognizes that watershed monitoring data is fundamentally necessary to gain an understanding of the water quantity, water quality and nutrient budgets of Butler County watersheds. This project will assist BCSWD in managing water resources to meet multiple objectives within the County. Those objectives include:

- prediction of frequency and severity of floods
- establishing quantity and quality of water for aquatic life and recreation
- managing water use
- developing watershed policies, procedures, and action plans for land use and development

A monitoring network is the "backbone" for facilitating good decision-making toward comprehensive water resource management. BCSWD ultimately intends to collect countywide information to develop guidelines for future activities within its watersheds. This work will create building blocks to drive guidelines for future development within BCSWD watersheds. A pilot watershed monitoring project with Four Mile Creek will be invaluable for projecting BCSWD (and stakeholder) staffing, financial, and other resource needs required to extend monitoring from watershed to watershed. The pilot project will facilitate development of standard operating procedures and processes needed to improve, streamline, and ultimately replicate the processes into each additional watershed to be monitored.

B20

Activity: P.R.I.D.E. Program Activity Description: Litter Collection and Clean-up

Date: 01/01/2014 - 12/31/2014

The Butler County Sheriff's Roadside Collection litter Program is called PRIDE. The acronym stands for "Providing Responsibilities for Inmates through Duties for the Environment". Led by the litter crew supervisor, inmates from the Resolutions medium security prison collect litter along public rights-of-ways and in parks and, sometimes, assist in the removal of waste from illegal dumpsites.

- PRIDE Crew "common litter" collected in 2014 (in pounds): 18,221
- PRIDE Crew hours worked in 2014: 436 hours
- PRIDE Crew miles traveled in 2014: 209 miles

B21**Activity: Household Hazardous Waste Program****Date: 05/01/2014 - 10/30/2014**

Household Hazardous Waste Recycling Events are held weekly from May to October and are sponsored by Butler County's Solid Waste Management District. The 2014 events resulted in 104.6 tons of household hazardous waste collected for safe processing, disposal, or recycling. Total number of participants was 2,955.

B22**Mobile Household Hazardous Waste Drop Off Collection Events****Date: 04/26/2014**

Butler County's Solid Waste Management District partnered with Fairfield Township to provide a one day mobile Household Hazardous Waste (HHW) service in conjunction with the township's annual community clean-up event.

163.95 tons of HHW collected; 360 participants.

B23**Activity: Curbside Freon Appliance Collection Program****Date: 04/01/2014 – 10/30/2014**

Curbside freon appliance collection is sponsored by Butler County's Solid Waste Management District. The 2014 program resulted in the collection of 39.6 tons of freon containing appliances (458 units) from 402 participating households.

B24**Activity: Tire Collection at Ross High School****Date: 11/15/2014**

Tire collection is sponsored by Butler County's Solid Waste Management District. The November event held at the Ross Township High School resulted in the collection of 84.2 tons of tires and 292 people participated.

B25**Activity: Webcasts Series – Watershed & Stormwater Management****Dates: 02/13/2014; 03/12/2014; 04/09/2014; 05/21/2014; 06/11/2014; 09/10/2014; 10/08/14; 11/12/14**

In an effort to provide educational opportunities about stormwater and watershed management issues, the Butler County Storm Water District hosted a variety of webcast seminars produced by the Center for Watershed Protection. The topics covered included: Bioretention Vegetation Selection, BMP Maintenance, Design & Construction of BMPs, Implementing Regional and Local TMDLs, Parking Lot as SW Practice, Retrofitting Existing Ponds and Basins, Role of Local codes, and Stream Restoration as Pollutant Reduction Strategy. Forty nine (49) people took advantage of this opportunity for training and open discussion of storm water management.

B26**Activity: River Cleanup – Mill Creek****Dates: 10/04/2014**

The Council was fortunate enough to welcome 30 volunteers to the second annual Upper Mill Creek Cleanup on Saturday, October 4. Participants gathered at Beckett Park in West Chester Township. Loads upon loads of trash were collected and sent to their proper place! Firestone graciously agreed to recycle all 30 retrieved tires for free. We sincerely thank those who braved the chilly weather to volunteer with the Council.

B27**Activity: Rain Barrel Art Project****Dates: 11/15/13 - 04/24/2014**

The Rain Barrel Art Project is Save Local Waters' signature program. This program invites local artists of all levels to paint our 50 Rain Barrels provided by the Metropolitan Sewer District.

November 15th – January 20th : Artwork entries for Rain Barrel Art

January 20th – January 31st – Selection of top 50 entries

February 7th : Mandatory Artist workshop and Rain Barrel pickup (9am to 11am Cincinnati Zoo)

February 7th to March 27th : Painting period for Rain Barrels
April 1st to April 23rd : Rain Barrel displayed at the Cincinnati Zoo
April 23rd : Rain Barrel Art Benefit Auction

These Rain Barrels are then displayed at the Cincinnati Zoo for a period of 3 weeks. During these weeks tens of thousands interact and view these Rain Barrels. At the end of the Display period the Rain Barrels are auctioned during the Zoo's Party for the Planet. Here are some highlights from last years project:

News Coverage: 9 Local and National News Agencies
Entries Submitted: 62
Rain Barrels Painted: 49
Schools Participated: 15
Private Artists and Businesses: 8
Total Number of Artists: 285
Party for the Planet Attendance: 5,274
Attendance during Rain Barrel Art Project Display: 100,000+

B28

Activity: APWA 2014 Winter Salt Crisis Roundtable

Dates: 09/30/14

Approximately one hundred (100) Public Works officials from Southwest Ohio gathered at the Butler County Engineers Office to discuss salt conservation techniques and the use of alternate de-icing materials during snow and ice control operations. As members of the Southwest Ohio APWA Executive Board, representatives from the Butler County Storm Water District participated in the development and coordination of this event.

B29

Activity: Southwest Ohio Erosion Control & Stormwater Forum

Dates: 10/10/14

This event held in Liberty Township, Butler County, Ohio targeted developers, homebuilders, engineers, contractors, consultants and local government officials whose interest or job responsibilities involve sediment/erosion control and stormwater issues. A representative from the Butler County Storm Water District presented on the creation of proactive erosion sediment control partnerships within the construction process. One hundred twenty (120) people were in attendance.

B30

Activity: Butler County Hazardous Waste Materials, Waste, and Spill Summit

Dates: 11/13/14

The purpose of this summit was to promote networking and education for spill response and best practices for chemical and waste handling. Approximately 60 people were in attendance. For the event held at the Butler County Engineers Office. The target audience for this course included public works personnel, first responders, and those who are directly involved with chemicals in their workplace or with chemical incidents out in the field. Presentations included: Emergency Response to a Chemical Release - A Fire Chief's Perspective; L.E.P.C. and HazMat - A Collaborative Partnership; Protecting Groundwater and Storm Water Infrastructure; Abandoned Drums – What to do, from OEPA's Perspective; Clearing the Way - Debris Management & Planning After an Incident; Dangerous Discoveries - Clandestine Drug Manufacturing.

B31

Activity: Industrial Assistance – Ohio Aluminum Chemical

Dates: 01/01/14 - 09/01/14

Ongoing surveillance and sampling of surface water and storm water resources at Ohio Aluminum Chemical (4544 Muhlhauser Road), in partnership with Ohio EPA and West Chester Fire Department. Ohio Aluminum Chemical appears to be losing aluminum chlorohydrate product and/or acid waste from its facility, causing occasional low pH levels and white precipitated matter in local water bodies. Butler County first began working with this industry and Ohio EPA in January 2012. All pH monitoring done in 2014 was within acceptable range. Per OEPA, Butler County discontinued monitoring in September 2014.

B31**Activity: Industrial Assistance – Koch Foods****Dates: 09/18/14**

Investigation of a “fish kill” near Koch Foods (4100 Port Union Road) on September 18, 2014. It was determined the spill originated from the Koch Foods facility as a result of discharges from the inedible dock area discharging to a storm drain; and/or chemicals from the wastewater treatment area that were stored outside and hosed into a nearby storm drain. Koch Foods contracted with Superior Environmental Solutions to clean out the retention pond and upstream drainage systems. Koch Foods was issued a Notice of Violation from Ohio EPA and cost recovery from Butler County Water and Sewer. Koch Foods is addressing the discharge from the inedible dock area to the storm drain in their current plant expansion. The trench drain in the inedible area is being re-routed to Koch Foods wastewater treatment facility.

B31**Activity: Industrial Assistance – Industrial Outfall Inspection****Dates: 01/01/14 – 12/31/14**

Visual inspection of storm water outfalls and drainage regimes by Butler County Water And Sewer Industrial Services Technicians at over 40 local industries (routine part of BCWS’ annual inspection protocol)

B31**Activity: Industrial Assistance – Industrial Outfall Inspection****Dates: 01/01/14 – 12/31/14**

Investigation of industrial storm water permit applicability by Butler County Water and Sewer Industrial Services Technicians at over 40 local industries, including applicability of “no exposure” provision (routine part of BCWS’ annual inspection protocol)