



# NPDES Small MS4 General Permit (OHQ000002) Annual Reporting Form

**Instructions for completing this form:**

- OHQ000002 requires that this form be used when submitting annual reports. You may request approval to use your own reporting format.
- Annual Reports are due annually on or before April 1<sup>st</sup>.
- Complete the form and sign and date the certification statement below.
- If more space is needed than is provided, identify within the provided space that Attachment A, B, C, etc. has been attached.
- If an item of the form is not applicable for your program (such as street sweeping), fill in N/A in the space provided.
- Don't include attachments such as brochures, newspaper clips, sign-in sheets, etc. related to your program with this form. You only need to summarize these within this report. These records must be filed and will be needed during program audits.
- When complete, submit this Annual Report form to the following address:  
Ohio Environmental Protection Agency  
Division of Surface Water  
Storm Water Program – Small MS4  
P.O. Box 1049  
Columbus, Ohio 43216-1049

Small MS4 Annual Report for Year: 2010		
Ohio EPA Facility Permit Number: 1GQ00051*BG		
Name of MS4: Butler County Storm Water District		
Primary Contact: Gregory J. Wilkens, P.E., P.S.		Title: Storm Water Engineer
Mailing Address: 1921 Fairgrove Avenue		
City: Hamilton	Zip Code: Ohio	County: Butler
Telephone Number: 513-867-5744	Email Address: wilkensg@bceo.org	

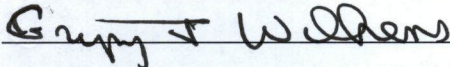
Include or attach a Table of Organization. Indicate who (name and contact information) is responsible for overall management and implementation of your program, and if different, each minimum control measure of your program. Identify how development and implementation across multiple positions, agencies and departments occur. Also, identify any Memorandum of Understandings (MOUs) or other such agreements that exist.

- Attachment "A" - Organizational Chart
- Attachment "B" - Applicable Sites for Construction Site Runoff Control
- Attachment "C" - Bonus Activities

I certify under penalty of law that this document and all attachments were prepared under my direction or supervision in accordance with a system designed to assure that qualified personnel properly gather and evaluate the information submitted. Based on my inquiry of the person or persons who manage the system, or those persons directly responsible for gathering the information, the information submitted is, to the best of my knowledge and belief, true, accurate and complete. I am aware that there are significant penalties for submitting false information, including possibility of fine and imprisonment for knowing violations.

Print Name: Gregory J. Wilkens, P.E., P.S.

Print Title: Storm Water Engineer

Signature: 

Date: Amended submittal - September 21, 2011  
(Original submittal - March 28, 2011)



**PUBLIC EDUCATION & OUTREACH**

Estimate Your Permit Area's Total Population: 144,795

BMP (mechanism) & Responsible Party	Measurable Goal	Theme or Message	Target Audience	% of Target Audience Reached	Summary of Results	Effective (Yes or No)
<p><b>Media Awareness Packet</b> Butler County Storm Water District</p>	<p>Annually prepare at least one Press Release Packet and distribute to local media</p>	<p>Watershed Awareness &amp; Water Quality</p>	<p>General Public</p>	<p>Potential audience = 970,759</p> <p>58 environmentally related segments produced for Project Earth</p> <p>30 second Project Earth advertisement ran 133 times</p> <p>Project Earth Website: page view monthly average = 1,378</p> <p>200,000 online banner impressions per month on WLWT.com linking URL to the Project Earth homepage</p>	<p>The Butler County Storm Water District, as a member of the Regional Storm Water Collaborative, has partnered with StormCenter Communications Inc. and WLWT Channel 5 to create a television "franchise feature" and advertising campaign called Project Earth.</p> <p>The purpose of this project is to educate and involve the citizens of the Tri-State area in the stewardship of the regions' natural resources.</p> <p>Through special reports on WLWT News 5, and a special Project Earth section on WLWT.com, Project Earth is answering questions about water conservation, watershed stewardship, land use, the environment and our health.</p> <p>For more information, visit the special Project Earth section online at: <a href="http://projectearth.wlwt.com">http://projectearth.wlwt.com</a></p>	<p>Yes</p>
<p><b>Media Awareness Packet</b> Butler County Storm Water District</p>	<p>Annually prepare at least one Press Release Packet and distribute to local media</p>	<p>Watershed Awareness &amp; Water Quality</p>	<p>General Public</p>	<p>Average daily traffic count for a single billboard was 11,500. Campaign utilized 24 billboards at various times during a six month period.</p>	<p>The Butler County Storm Water District conducts an annual outdoor billboard advertising campaign. The boards delivers the messages such as "Storm Drains are not Garbage Cans" and "Use Phosphorus Free Fertilizer". The message prompts people to report</p>	<p>Yes</p>

					pollution to the storm water hotline number. At a minimum, eight boards are placed throughout the county during a single showing. Billboards are also used to highlight public involvement activities such as the Clean Sweep of the Great Miami River and Great Miami River Days festival. From April – September 2010, 24 billboards were posted .	
<b>Education Program for Local Schools</b>  Butler Soil & Water Conservation District	Adopt and Distribute K-12 Water Curricula Program	Watershed Awareness & Water Quality	Students: grades K-12	139 classroom programs reached 3559 students and 348 adults.	This year the Butler Soil and Water Conservation District conducted <b>139</b> education programs within NPDES Phase II affected areas in Butler County. The Butler Soil and Water Conservation District offers programs and resources to local schools/groups. Full day workshops and introductory programs for the following programs are available: Project WET (Water Education for Teachers), Project WILD Aquatics, stream walks, stream monitoring, and On the Trail of Non-Point Pollution Sources.	Yes
<b>Education Program for Local Schools</b>  Butler County Department of Water and Sewer	Adopt and Distribute K-12 Water Curricula Program	Watershed Awareness & Water Quality	Students: grades K-12	363 presentations reached 8,887students.	The Butler County Department of Water and Sewer provides a variety of educational programs to school districts within Butler County. During 2010, the environmental educator made <b>363</b> presentations relating to water quality, litter prevention, waste reduction, recycling, conservation, environmental stewardship and pollution reduction that reached over <b>8,887</b> students.	Yes



# SMALL MS4 ANNUAL REPORT FORM

State of Ohio Environmental Protection Agency

<b>Education Workshop</b> Butler Soil & Water Conservation District	Adopt and Distribute K-12 Water Curricula Program	Soils Science & Sediment Erosion Control Issues	3 <sup>rd</sup> Grade Teachers	24 people	On January 30, 2010, Soils Science Workshops were presented to 3 <sup>rd</sup> Grade teachers. All materials presented were aligned with State of Ohio standards for Science and Social Studies.	Yes
<b>Storm Drain Labeling</b> Butler Soil & Water Conservation District	Purchase and coordinate installation of 300 labels per year until all labels are marked.	Hazards of Illicit Discharge	Homeowners and General Public	Four separate labeling events were planned for the 2010 permit year. Inclement weather forced the staff to cancel two of the labeling events. The two remaining events resulted in the installation of seventy five (75) storm drain labels on catch basins and the distribution of illicit discharge information to houses by community volunteers.	Storm drain labels are simple and effective best management practices to prevent non-point source pollution from entering waterways in our community and those downstream. The labels are intended to make urban and suburban homeowners think twice before dumping material down the storm sewers and into rivers, streams, and ponds in their neighborhoods.	Yes
<b>BONUS ACTIVITIES</b> Butler County Storm Water District	N/A	SEE ATTACHMENT "C"	This list contains activities not specifically required by permit or listed as part of the District's Storm Water Management Plan.			

## PUBLIC EDUCATION & OUTREACH

• Summarize activities you plan to undertake during the next reporting cycle.

BMP (mechanism) & Responsible Party	Measurable Goal	Theme or Message	Target Audience	% of Target Audience to be Reached	Summary of Planned Activities	Proposed Schedule
<b>Media Awareness</b>  Butler County Storm Water District	Annually prepare at least one Press Release Packet and distribute to local media	Sedimentation	General Public	Dependent on reach of selected media.	Promote public education theme utilizing billboard advertising	Various months throughout the year.
<b>Media Awareness</b>  Butler County Storm Water District	Annually prepare at least one Press Release Packet and distribute to local media	Various themes which may include, and are not limited to; water quality, litter prevention, waste reduction, recycling, conservation, environmental stewardship and pollution reduction	General Public	Dependent on reach of selected media.	Contract with StormCenter Inc. and local television network to provide regular television spots and Public Service Announcements	Up to three stories per week can be picked up and produced by WLWT Channel 5 News if the station finds them timely and newsworthy.
<b>Education Program for Local Schools</b>  Butler Soil & Water Conservation District; Butler County Department of Water and Sewer	Provide K-12 Water Curricula Program	Various themes which may include, and are not limited to; water quality, litter prevention, waste reduction, recycling, conservation, environmental stewardship and pollution reduction	School Children K-12	Dependent on requests for programs	Provide a variety of educational programs to school districts within Butler County.	Provide programs as requested throughout the school year.
<b>Storm Drain Labeling</b>  Butler Soil & Water Conservation District	Purchase and coordinate installation of 300 labels per year until all labels are marked.	Hazards of Illicit Discharge	Homeowners and General Public	Dependent on number of labels installed and number of houses receiving illicit discharge information door hangers.	Utilize neighborhood volunteers to install storm drain labels and distribute information to residential properties on hazards of illicit discharge	Throughout the year as weather permits.

**PUBLIC INVOLVEMENT/PARTICIPATION**



BMP (Activity) & Responsible Party	Measurable Goal	Theme or Message	Target Audience	Estimate of People Participated	Summary of Results	Effective (Yes or No)
<b>Public Meetings</b> Butler County Storm Water District	Hold two public meetings and one citizen discussion panel per year until Program is implemented.	District Open House	General Public	Approx. 5,000 people.  (Butler County Fair average attendance is around 100,000 people.)	The Butler County Storm Water District presented a week long open-house forum at the Butler County Fair to allow the public an opportunity review and discuss the Butler County Storm Water Management Plan and the Annual Report. Informational brochures were also distributed about Non-point Source Pollution and Illicit Discharges.	Yes
<b>Public Meetings</b> Butler County Storm Water District	Hold two public meetings and one citizen discussion panel per year until Program is implemented.	Butler County Storm Water District Annual Meeting	Butler County Storm Water District Co-permittees	52 People	A total of 52 people attended the quarterly public meetings. In December of 2009, the District decided to forego lengthy, formal annual meetings and adopt a new format of informal quarterly updates. This change is intended to make meetings more accessible to co-permittees and facilitate the distribution of District information in a timely fashion	Yes
<b>Butler County Stream Team</b> Butler County Storm Water District	Facilitate and oversee one Stream Clean-Up and Monitoring Program each year.	Volunteers collect data and monitor stream health	General Public and Students	The Stream Team averages 91 samples and 26 volunteers each month. Over the course of the year, fifty (50) new volunteers have participated.	The Butler County Storm Water District teamed up with Miami University Institute for Environmental Science and the Butler Soil and Water Conservation District to promote and implement a monthly volunteer stream monitoring program to assess local stream quality. A protocol for the lab and field procedures was prepared and submitted to the Ohio EPA Credible Data Program. The Stream Team averages 91 samples a month and 26 volunteers. Over the course of the year, fifty (50) new volunteers have participated. There are 20 fixed locations from watersheds throughout Butler County and the remainder of the samples come from locations chosen by volunteers. When samples are	Yes



					returned to the lab, they are analyzed for six parameters: nitrates, phosphates, bacteria, conductivity, total dissolved solids, pH, and turbidity. For more information concerning the Butler County Stream Team, visit : <a href="http://www.butlercountystreamteam.org">www.butlercountystreamteam.org</a>	
<b>Stream Walks</b> Butler Soil & Water Conservation District	Facilitate and oversee one Stream Clean-Up and Monitoring Program each year.	Water Quality, Stream Ecology, Watershed Awareness	School Children and Teachers	339 children and 84 adults	The Butler Soil and Water Conservation District conducted 7 challenging, yet entertaining, educational stream and/or wetland walks for 339 children and 84 adults. Topics included water quality (chemical, biological, physical attributes) stream ecology, stream attributes, and watershed mapping.	Yes
<b>Clean Sweep of the Great Miami River</b> Butler County Storm Water District	Facilitate and oversee one Stream Clean-Up and Monitoring Program each year.	Litter Prevention	General Public	230 participants in Butler County; 1385 participants overall.	Over 1385 volunteers participated watershed wide in the "Clean Sweep of the Great Miami River" – an effort to clean up the entire 170-mile river. On May 1 <sup>st</sup> in the Butler County area, 230 participants collected 10.6 tons of litter and 142 tires at six sites long the Great Miami River in Butler County.	Yes
<b>Storm Water Hotline, Database and Response Program</b> Butler County Storm Water District	Document Complaints Received and Follow up in a timely manner.	Illicit Discharge, Illegal Dumping; Drainage; Sanitary; HSTS; Erosion; Other	General Public	120 customer inquiries for the year 2010.	The Butler County Storm Water District created a database and response program to document citizen inquiries/complaints and accurately record contact information. The database and response program recorded over 120 customer inquiries for the year 2010. The database tracks information specific to the customers address, method of contact, nature of inquiry, and detail of inquiry/complaint resolution. Average response and resolution time is 7 days.	Yes



<b>BONUS ACTIVITIES</b>	N/A	<b>SEE ATTACHMENT "C"</b>	<b>This list contains activities not specifically required by permit or listed as part of the District's Storm Water Management Plan.</b>		
Butler County Storm Water District					

**PUBLIC INVOLVEMENT/PARTICIPATION**

- Summarize activities you plan to undertake during the next reporting cycle.

BMP (Activity) & Responsible Party	Measurable Goal	Theme or Message	Target Audience	Estimate of People to Participate	Summary of Planned Activities	Proposed Schedule
<b>Public Meetings</b>  Butler County Storm Water District	Hold two public meetings and one citizen discussion panel per year until Program is implemented.	NPDES phase II program information	General Public	As many as event will accommodate.	Utilize a variety of public meeting formats to engage the public such as open house, public hearings, annual meetings, etc.	Various times throughout the year.
<b>Butler County Stream Team</b>  Butler County Storm Water District	Facilitate and oversee one Stream Clean-Up and Monitoring Program each year.	Volunteers collect data and monitor stream health	General Public and Students	Dependent on number of volunteers	Meet monthly with volunteer stream monitors to assess local stream quality.	Monthly
<b>Clean Sweep of the Great Miami River</b>  Butler County Storm Water District	Facilitate and oversee one Stream Clean-Up and Monitoring Program each year.	Litter Prevention	General Public	Dependent on number of volunteers	Coordinate clean-up of Great Miami River at multiple sites in Butler County.	Annual
<b>Storm Water Hotline, Database and Response Program</b>	Document Complaints Received and Follow up in a timely manner.	Illicit Discharge, Illegal Dumping; Drainage; Sanitary; HSTS; Erosion; Other	General Public	Dependent on caller volume.	Track information specific to the customers address, method of contact, nature of inquiry, and detail of	Daily





Butler County Storm water District					inquiry/complaint resolution. Respond and resolve complaint in a timely manner.
------------------------------------	--	--	--	--	---

**ILLICIT DISCHARGE DETECTION & ELIMINATION (IDDE)**

BMP & Responsible Party	Measurable Goal	Completed (Yes or No)	Cite Local Code(s) Being Used (If available, web link for code(s))	Summary of Results or Activities	Effective (Yes or No)
<b>Ordinance or Other Regulatory Mechanism</b> Butler County Storm Water District	Establish Illicit Discharge Ordinance for District; implement and enforce.	Yes	Butler County Illicit Discharge Detection and Elimination Regulations (Resolution No. 09-11-1954)	On November 12, 2009, the Butler County Board of Commissioners signed and adopted the Illicit Discharge Detection and Elimination Regulations. The final draft is available on the District website: <a href="http://www.stormwaterdistrict.org">www.stormwaterdistrict.org</a>	Yes
<b>BMP &amp; Responsible Party</b>	<b>Measurable Goal</b>	<b>Completed (Yes or No)</b>	<b>Summary of Activities or Updates</b>		<b>Effective (Yes or No)</b>
<b>Storm Sewer System Map</b> Butler County Storm Water District	Update Storm Sewer Map Annually.	Yes	Using "As-Built" data originating from the 1970's and forward, 100% of known sewer systems have been mapped in the Phase II affected areas within the county. Each year as new development occurs throughout the District, the sewer map will be reviewed and updated.		Yes
<b>BMP &amp; Responsible Party</b>	<b>Measurable Goal</b>	<b>Completed (Yes or No)</b>	<b>Summary of Activities or Updates</b>		<b>Effective (Yes or No)</b>
<b>HSTS Mapping and List</b> Butler County Storm Water District	Update HSTS Map Annually	Yes	The Butler County Storm Water District researched archived HSTS records held by the Butler County Health Department. The information can be viewed graphically with the use of the county GIS system. A map has been made identifying existing HSTS within the District. Updates are made on an annual basis. All new applications for HSTS will be added to that data.		Yes
<b>BMP &amp; Responsible Party</b>	<b>Measurable Goal</b>	<b>Completed (Yes or No)</b>	<b>Summary of Activities or Updates</b>		<b>Effective (Yes or No)</b>
<b>IDDE Plan</b> Butler County Storm Water District	Develop and implement IDDE plan	Yes	By creating and adopting an illicit discharge regulation, the Storm Water District has established the methods and standards for best management practices (BMPs) for controlling the introduction of pollutants into the municipal separate storm sewer system. The regulation establishes the authority and means by which the District will carry out inspection, monitoring and enforcement procedures necessary to ensure compliance. The Butler County Storm Water District created a database and response program to document and accurately record contact information regarding spill reports, illicit		Yes



# SMALL MS4 ANNUAL REPORT FORM

State of Ohio Environmental Protection Agency

			discharges, illegal dumping, and citizen complaints. The information obtained from the hotline and database can be mapped with the use of the county GIS system. Problem areas can be viewed graphically based on type, location, and frequency. This database is updated on a regular basis to help identify and resolve problem areas.				
BMP & Responsible Party	Measurable Goal	Completed (Yes or No)	# of Outfalls Screened	# of Dry-Weather Flows Identified	# Of Illicit Discharges:		Effective (Yes or No)
					Identified*	Eliminated	
<b>Dry-Weather Screening of Outfalls</b> Total # of Outfalls <u>6,093</u> Butler County Storm Water District	Inspect 400 mapped outfalls and sample when necessary	Yes	2,872	12	0	n/a	Yes
<b>BONUS ACTIVITIES</b>	N/A	SEE ATTACHMENT "C"	This list contains activities not specifically required by permit or listed as part of the District's Storm Water Management Plan.				
Butler County Storm Water District							

\*Include an attachment which provides schedules for elimination of illicit connections that have been identified but have yet to be eliminated.

## ILLICIT DISCHARGE DETECTION & ELIMINATION (IDDE)

- Summarize activities you plan to undertake for the next reporting cycle.

BMP & Responsible Party	Measurable Goal	Summary of Planned Activities	Proposed Schedule
<b>Ordinance or Other Regulatory Mechanism</b> Butler County Storm Water District	Continue to implement and enforce IDDE regulation.	Review IDDE regulation and update as needed.	Annually
<b>Storm Sewer System Map</b> Butler County Storm Water District	Update Storm Sewer Map Annually.	Each year as new development occurs throughout the District the sewer map will be reviewed and updated.	Annually
<b>HSTS Mapping and List</b> Butler County Storm Water District	Update HSTS Map Annually	Updates are made on an annual basis. All new applications for HSTS will be added to that data.	Annually
<b>IDDE Plan</b> Butler County Storm Water District	Continue to implement IDDE plan	Review and update plan as needed.	Annually
<b>Dry-Weather Screening of Outfalls</b>	Inspect 400 mapped outfalls and sample when	The Butler County Storm Water District (District)	Permit Year 2011-2012



Butler County Storm Water District	necessary	commissioned a third outfall mapping & screening project. Consultant will utilize the existing geodatabase, incorporate storm sewer feature information, identify new outfalls, dry weather screen outfalls, and sampling & testing of non-storm water flows as necessary.	
------------------------------------	-----------	--	--

**CONSTRUCTION SITE RUNOFF CONTROL**

BMP & Responsible Party	Measurable Goal	Completed (Yes or No)	Cite Local Code(s) Being Used (If available, web link for code(s))		Summary of Results or Activities	Effective (Yes or No)
<b>Ordinance or Other Regulatory Mechanism</b>  Butler County Storm Water District	Compliance with NPDES Construction General Permit requirements.	Yes	Butler County Subdivision Regulations		The Butler County Subdivision regulations were revised in March of 2007 to update sediment and erosion control requirements to current NPDES Construction General Permit requirements. This includes a permitted process with storm water pollution plan review for all parcels within the county.	Yes
BMP & Responsible Party	Measurable Goal	Completed (Yes or No)	Standards Being Used		Summary of Results or Activities	Effective (Yes or No)
<b>Sediment and Erosion Control Requirements</b>  Butler County Storm Water District	Compliance with NPDES Construction General Permit requirements.	Yes	Erosion and Sediment Control Regulations: Article VII – Butler County Subdivision Regulations		Erosion and Sediment Control Regulations: Article VII were adopted as part of the of the Butler County Subdivision regulations on March 12, 2007. The changes were effective during the Summer of 2007.	Yes
BMP & Responsible Party	Measurable Goal	Completed (Yes or No)	Complaints		Summary of Results or Activities	Effective (Yes or No)
<b>Complaint Process</b>  Butler County Storm Water District	Respond to all complaints	Yes	Received 9	Followed-Up On 9	Responded to and resolved all complaints.	Yes
BMP & Responsible Party	Measurable Goal	Completed (Yes or No)	# of Applicable Sites Requiring Plans	# of Plans Reviewed	Summary of Results or Activities	Effective (Yes or No)



# SMALL MS4 ANNUAL REPORT FORM

State of Ohio Environmental Protection Agency

<b>Site Plan Review Procedures</b>	Review all site plans for compliance	Yes	437	437	Made plan comments to ensure that all sites were in compliance with regulations.	Yes	
Butler County Storm Water District							
<b>BMP &amp; Responsible Party</b>	<b>Measurable Goal</b>	<b>Completed (Yes or No)</b>	<b>Site Inspections Performed</b>			<b>Summary of Results or Activities</b>	<b>Effective (Yes or No)</b>
			<b># of Applicable Sites</b>	<b># Performed</b>	<b>Avg. Frequency</b>		
<b>Site Inspection Procedures</b>	Inspect all applicable sites for compliance	Yes	437	4,532	Every two weeks	Inspected active sites for compliance with Erosion and Sediment control Regulations	Yes
Butler County Storm Water District							
<b>BMP &amp; Responsible Party</b>	<b>Measurable Goal</b>	<b>Completed (Yes or No)</b>	<b>Violations</b>			<b>Summary of Results or Activities</b>	<b>Effective (Yes or No)</b>
			<b># of Violation Letters</b>	<b># of Enforcement Actions</b>			
<b>Enforcement Procedures</b>	Ensure compliance with regulations.	Yes	15	0	Violations resolved. Enforcement actions unnecessary.	Yes	
Butler County Storm Water District							

\*Include an attachment which identifies applicable sites within your jurisdiction for this reporting period.

## CONSTRUCTION SITE RUNOFF CONTROL

- Summarize activities you plan to undertake during the next reporting cycle.

BMP & Responsible Party	Measurable Goal	Summary of Planned Activities	Proposed Schedule
<b>Ordinance or Other Regulatory Mechanism</b>	Compliance with NPDES Construction General Permit requirements.	Review Federal and State rule changes and revise county regulations.	As needed.
Butler County Storm Water District			
<b>Sediment and Erosion Control Requirements</b>	Compliance with NPDES Construction General Permit requirements.	Review Federal and State rule changes and revise county regulations.	As needed.
Butler County Storm Water District			



<b>Complaint Process</b>	Respond to all complaints.	Respond to all complaints and ensure compliance with all regulations.	As needed.
Butler County Storm Water District			
Butler County Storm Water District	Review all site plans for compliance	Continue to make plan comments to ensure that all sites were in compliance with regulations.	As needed.
Butler County Storm Water District			
<b>Site Inspection Procedures</b>	Inspect all applicable sites for compliance	Inspect active sites for compliance with Erosion and Sediment control Regulations	As needed.
Butler County Storm Water District			
<b>Enforcement Procedures</b>	Ensure compliance with regulations.	Enforce compliance on all active sites.	As needed.
Butler County Storm Water District			

**POST-CONSTRUCTION STORM WATER MANAGEMENT IN NEW DEVELOPMENT AND REDEVELOPMENT**



BMP & Responsible Party	Measurable Goal	Completed (Yes or No)	Cite Local Code(s) Being Used (If available, web link for code(s))		Summary of Results or Activities	Effective (Yes or No)
<b>Ordinance or Other Regulatory Mechanism</b> Butler County Storm Water District and Co-Permittees	Comply with post-construction requirements for NPDES phase II permit. (ie. Provide for open space, minimization of impervious area, protection of natural resources, etc.)	Yes	Butler County Subdivision Regulations Butler County Flood Damage Prevention Regulations Butler County Zoning Code Township Zoning Code (Fairfield, Liberty, St. Clair, Wayne, West Chester) City of Trenton Subdivision Regulations and Zoning		All documents have been updated to include post construction requirements. Documents are reviewed as needed to ensure compliance.	Yes
BMP & Responsible Party	Measurable Goal	Completed (Yes or No)	Structural and/or Non-Structural Standards Being Used		Summary of Results or Activities	Effective (Yes or No)
<b>Post-Construction Requirements</b> Butler County Storm Water District and Co-Permittees	Comply with post-construction requirements for NPDES phase II permit.	Yes	Ohio EPA Construction General Permit requirements ODNR Rainwater and Land Development Manual ODOT Location and Design Manual Also, see above document list.		All documents have been updated to include post construction requirements. Documents are reviewed as needed to ensure compliance.	Yes
BMP & Responsible Party	Measurable Goal	Completed (Yes or No)	# of Applicable Sites Requiring Post-Const. BMPs	# of Plans Reviewed	Summary of Results or Activities	Effective (Yes or No)
<b>Site Plan Review Procedures</b> Butler County Storm Water District	Review all sites required to obtain Ohio EPA Construction General Permit	Yes	20	20	Made plan comments to ensure that all sites were in compliance with regulations.	Yes
BMP & Responsible Party	Measurable Goal	Completed (Yes or No)	Site Inspections Performed		Summary of Results or Activities	Effective (Yes or No)
			# Performed	Avg. Frequency		
<b>Site Inspection Procedures</b> Butler County Storm Water District	Inspect all sites that require post construction BMPs (ie. greater than 5 acres)	Yes	115	Every two weeks	Inspected active sites for compliance with Erosion and Sediment Control Regulations.	Yes
BMP & Responsible Party	Measurable Goal	Completed (Yes or No)	Violations		Summary of Results or Activities	Effective (Yes or No)
			# of Violation Letters	# of Enforcement Actions		
<b>Enforcement Procedures</b> Butler County Storm Water District	Ensure compliance with E&SC regulations.	Yes	0	0	Enforced compliance on all active sites.	Yes



BMP & Responsible Party	Measurable Goal	Completed (Yes or No)	# of Sites Requiring Plans/Agreements	# of Plans Developed/Agreements in Place	Summary of Results or Activities	Effective (Yes or No)
<p><b>Long-Term O&amp;M Plans/Agreements</b></p> <p>Butler County Storm Water District</p>	<p>Ensure that facilities are either publicly owned and operated or a Home Owners Association or a Property Owners Association is established.</p>	Yes	10	10	<p>The Butler County Engineers Office coordinates and plans inspections of all publicly owned and operated drainage structures within the District on an annual basis. Facilities and structures have maintenance performed as necessary based upon inspection results. A report is issued annually to the County commissioners on all inspection and maintenance activities.</p>	Yes

**POST-CONSTRUCTION STORM WATER MANAGEMENT IN NEW DEVELOPMENT AND REDEVELOPMENT**

- Summarize activities you plan to undertake for the next reporting cycle.

BMP & Responsible Party	Measurable Goal	Summary of Planned Activities	Proposed Schedule
<p><b>Ordinance or Other Regulatory Mechanism</b></p> <p>Butler County Storm Water District</p>	<p>Comply with post-construction requirements for NPDES phase II permit. (ie. Provide for open space, minimization of impervious area, protection of natural resources, etc.)</p>	<p>All documents will be updated to include post construction requirements. Documents are reviewed as needed to ensure compliance.</p>	<p>Annually</p>
<p><b>Post-Construction Requirements</b></p> <p>Butler County Storm Water District</p>	<p>Comply with post-construction requirements for NPDES phase II permit.</p>	<p>All documents will be updated to include post construction requirements. Documents are reviewed as needed to ensure compliance.</p>	<p>Annually</p>
<p><b>Site Plan Review Procedures</b></p> <p>Butler County Storm Water District</p>	<p>Review all sites required to obtain Ohio EPA Construction General Permit</p>	<p>Make plan comments to ensure that all sites were in compliance with regulations.</p>	<p>Annually</p>





# SMALL MS4 ANNUAL REPORT FORM

State of Ohio Environmental Protection Agency

<b>Site Inspection Procedures</b>	Inspect all sites that require post construction BMPs (ie. greater than 5 acres)	Inspect active sites for compliance with Erosion and Sediment Control Regulations.	Annually
Butler County Storm Water District			
<b>Enforcement Procedures</b>	Ensure compliance with E&SC regulations.	Enforce compliance on all active sites. Database will be changed in 2011 to track construction and post-construction violations separately.	Make changes by end of Permit Year 2011
Butler County Storm Water District			
<b>Long-Term O&amp;M Plans/Agreements</b>	Ensure that facilities are either publicly owned and operated or a Home Owners Association or a Property Owners Association is established.	The Butler County Engineers Office will continue to coordinate and plan inspections of all publicly owned and operated drainage structures within the District on an annual basis. Facilities and structures have maintenance performed as necessary based upon inspection results. A report is issued annually to the County commissioners on all inspection and maintenance activities.	Annually
Butler County Storm Water District			

## POLLUTION PREVENTION/GOOD HOUSEKEEPING FOR MUNICIPAL OPERATIONS

BMP & Responsible Party	Measurable Goal	Completed (Yes or No)	Topic(s)	Targeted Audience	# of Employees Attended	Summary of Activity	Effective (Yes or No)
-------------------------	-----------------	-----------------------	----------	-------------------	-------------------------	---------------------	-----------------------



# SMALL MS4 ANNUAL REPORT FORM

State of Ohio Environmental Protection Agency

Employee Training Program	Establish plan for training and train 25% per year	Yes	Spill Identification and Emergency Response	Municipal Employees	50 Employees	PPGHP and SPCC plans were created and training was conducted for 16 municipal facilities.	Yes
Butler County Storm Water District							
List of Municipal Facilities Subject to Program					O&M Procedures Developed for Facilities (Yes or No)	# of Facility Inspections Performed	Frequencies of Such Inspections
<ol style="list-style-type: none"> <li>1. Butler County Engineer's Office</li> <li>2. Butler County Regional Airport</li> <li>3. City of Trenton</li> <li>4. Fairfield Township ( Morris Road )</li> <li>5. Fairfield Township (Tylersville Road)</li> <li>6. Hanover Township</li> <li>7. Lemon Township</li> <li>8. Liberty Township</li> <li>9. Madison Township</li> <li>10. Metroparks of Butler County</li> <li>11. Ross Township</li> <li>12. St. Clair Township</li> <li>13. Village of New Miami</li> <li>14. Village of Seven Mile</li> <li>15. Wayne Township</li> <li>16. West Chester Township</li> </ol>					Yes	11	Annual
MS4 Maintenance	Summarize Maintenance Activities and Schedules			Summarize Activities Performed			
	Maintenance activities are preformed on an as-needed basis.			The Butler County Engineers Office coordinates and plans inspections of all drainage structures within the District on an annual basis. Facilities and structures have maintenance performed as necessary based upon inspection results. A report is issued annually to the County commissioners on all inspection and maintenance activities.			
Disposal of Wastes	Procedures Developed (Yes or No)		Document Amounts of Wastes Properly Disposed				
	Yes		1097* gallons of automotive fluids recycled ( i.e. Transmission fluid, gear oil, engine oil )				
Road Salt	Covered (Yes or No)		Tons Used	Summarize Measures Taken to Minimize Usage			
	Yes		11,824*	Salt usage minimized through the use of Standard Operating Procedures (SOPs) for snow and ice control. Further reductions are achieved with the use of the automated brine maker and distribution tanks for pretreatment. Also investigated and experimented with beet juice as salt alternative.			
Pesticide & Herbicide Usage	Procedures Developed (Yes or No)		Gallons Used	Summarize Measures Taken to Minimize Usage			



	Yes	4086*	Butler County Engineers Office has developed and implemented Standard Operating Procedures (SOPs) for pesticide and herbicide application. All employees that participate in pesticide and herbicide application are licensed by the Ohio Department of Agriculture.
Fertilizer Usage	<b>Procedures Developed (Yes or No)</b>	<b>Pounds Used</b>	<b>Summarize Measures Taken to Minimize Usage</b>
	N/A	N/A	N/A
Street Sweeping	<b>Procedures Developed (Yes or No)</b>	<b>Document Amount of Material Collected and Properly Disposed</b>	
	Yes	Street sweeping as needed for county bridges and curb & gutter roads. Procedure in place for dewatering and disposal of collected waste. Currently procedures do not include a method to calculate and record the amount of material collected.	
Flood Management Projects	<b>Summarize any New or Existing Flood Management Projects that were Assessed for Impacts on Water Quality</b>		
	N/A		
<b>BONUS ACTIVITIES</b>	N/A	SEE ATTACHMENT "C"	This list contains activities that not specifically required by permit or listed as part of the District's Storm Water Management Plan.
Butler County Storm Water District			

\*Numbers reflect totals as reported by 11 of 16 facilities.

**POLLUTION PREVENTION/GOOD HOUSEKEEPING FOR MUNICIPAL OPERATIONS**

- Summarize activities you plan to undertake for the next reporting cycle.

BMP & Responsible Party	Measurable Goal	Summary of Planned Activities	Proposed Schedule
<b>Employee Training Program</b>	Train 25% of municipal employees subject to program.	Continue to implement training component of facility PPGHP.	Annually
Butler County Storm Water District			
<b>List of Facilities Subject to Program</b>	List all facilities subject to Program.	Review existing list of facilities subject to program and make changes as needed.	Annually
Butler County Storm Water District			
<b>MS4 Maintenance</b>	Inspect drainage structures within the District on an annual basis.	Coordinate and plan inspections of drainage structures within the District on an annual basis. Perform maintenance as necessary based upon inspection results. Issue report annually to the County commissioners on all inspection and maintenance activities.	Annually
Butler County Storm Water District			



# SMALL MS4 ANNUAL REPORT FORM

State of Ohio Environmental Protection Agency

<b>Disposal of Wastes</b>	Gallons of oil properly recycled/recovered	Recycle oil.	Continuous.
Butler County Storm Water District			
<b>Road Salt</b>	Minimize salt usage	Minimize salt usage through the use of Snow and Ice control SOPs, use of brine pretreatment system and investigate salt alternatives.	Annually
Butler County Storm Water District			
<b>Pesticide &amp; Herbicide Usage</b>	Minimize pesticide and herbicide usage	Continue to implement implemented Standard Operating Procedures (SOPs) for pesticide and herbicide application. Ensure employees obtain and maintain licensed by the Ohio Department of Agriculture license.	Annually
Butler County Storm Water District			
<b>Fertilizer Usage</b>	N/A	N/A	N/A
Butler County Storm Water District			
<b>Street Sweeping</b>	Properly dispose of and Document Amount of Material Collected	Develop and implement a method to calculate and record the amount of material collected.	Complete by the end of the permit cycle- 2014.
Butler County Storm Water District			
<b>Flood Management Projects</b>	N/A	N/A	N/A
Butler County Storm Water District			

**PROPOSED CHANGES TO YOUR SWMP (IF ANY)**

- Summarize any proposed changes to your SWMP, including changes to any BMPs or any identified measurable goals that apply to the program elements. If you fail to satisfy measurable goals for the reporting year, please explain why.

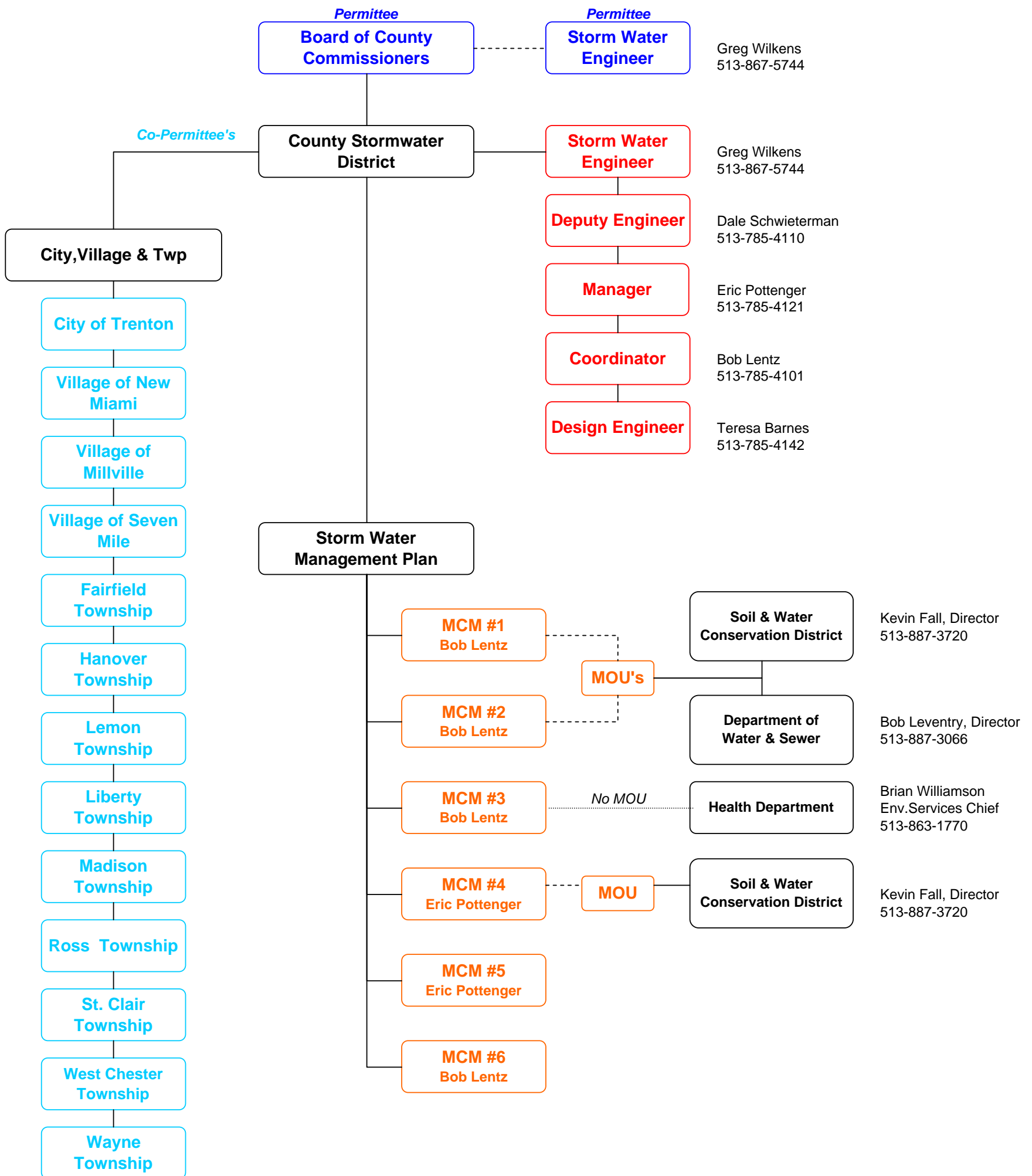
**VARIANCES GRANTED (IF ANY)**



- Identify and summarize any variances granted under your storm water program.



ATTACHMENT "A"  
**Organizational Chart**  
 NPDES Phase II



Attachment "B"  
 Applicable Sites for Construction Site Runoff Control  
**Total Permit Count from 1/1/2010 to 12/31/2010**

**Opened Erosion Sediment Control Permits**

<b><u>Permit #</u></b>	<b><u>Township</u></b>	<b><u>Category</u></b>	<b><u>Parcel #</u></b>	<b><u>Date Opened</u></b>
<b>BSW-LC10-00003</b>	WEST CHESTER	Commercial	M5620244000001	01/04/2010
<b>BSW-LC10-00004</b>	WEST CHESTER	Commercial	M5610026000085	01/05/2010
<b>BSW-LC10-00005</b>	ST CLAIR	Commercial	L5210001000005	01/05/2010
<b>BSW-LR10-00006</b>	WEST CHESTER	Residential	M5620439000070	01/05/2010
<b>BSW-LR10-00007</b>	FAIRFIELD	Residential	A0300032000033	01/05/2010
<b>BSW-LR10-00008</b>	LIBERTY	Residential	D2020299000031	01/05/2010
<b>BSW-LC10-00018</b>	WEST CHESTER	Commercial	M5620450000010	01/07/2010
<b>BSW-LR10-00019</b>	LIBERTY	Residential	D2020259000029	01/07/2010
<b>BSW-LR10-00020</b>	WEST CHESTER	Residential	M5620446000073	01/07/2010
<b>BSW-LR10-00021</b>	LIBERTY	Residential	D2020288000012	01/07/2010
<b>BSW-LR10-00026</b>	WEST CHESTER	Residential	M5620212000056	01/12/2010
<b>BSW-LR10-00029</b>	LIBERTY	Residential	D2020259000027	01/15/2010
<b>BSW-LR10-00030</b>	LIBERTY	Residential	D2020236000058	01/15/2010
<b>BSW-LR10-00031</b>	WEST CHESTER	Residential	M5620467000015	01/15/2010
<b>BSW-LR10-00032</b>	WEST CHESTER	Residential	M5620468000005	01/15/2010
<b>BSW-LR10-00035</b>	HANOVER	Residential	B1020139000016	01/20/2010
<b>BSW-LR10-00037</b>	WEST CHESTER	Residential	M5620457000030	01/20/2010
<b>BSW-LR10-00039</b>	LIBERTY	Residential	D2020293000009	01/22/2010



Attachment "B"  
 Applicable Sites for Construction Site Runoff Control  
**Total Permit Count from 1/1/2010 to 12/31/2010**

<u>Permit #</u>	<u>Township</u>	<u>Category</u>	<u>Parcel #</u>	<u>Date Opened</u>
<b>BSW-LR10-00040</b>	LIBERTY	Residential	D2020259000038	01/22/2010
<b>BSW-LR10-00050</b>	OXFORD	Residential	H3620067000003	01/27/2010
<b>BSW-LR10-00051</b>	MORGAN	Residential	G3210010200029	01/27/2010
<b>BSW-LR10-00052</b>	LIBERTY	Residential	D2020282000050	01/27/2010
<b>BSW-LR10-00053</b>	LEMON	Residential	C1720078000141	01/27/2010
<b>BSW-LR10-00054</b>	ROSS	Residential	K4620102000063	01/27/2010
<b>BSW-LR10-00055</b>	LIBERTY	Residential	D2020251000017	01/28/2010
<b>BSW-LR10-00060</b>	LIBERTY	Residential	D2020298000052	02/01/2010
<b>BSW-LR10-00066</b>	ROSS	Residential	K4620103000012	02/02/2010
<b>BSW-LR10-00067</b>	LIBERTY	Residential	D2020202000026	02/02/2010
<b>BSW-LR10-00068</b>	LIBERTY	Residential	D2020251000022	02/02/2010
<b>BSW-LR10-00075</b>	LIBERTY	Residential	D2020262000032	02/05/2010
<b>BSW-LR10-00076</b>	LIBERTY	Residential	D2020296000007	02/05/2010
<b>BSW-LR10-00082</b>	WEST CHESTER	Residential	M5620456000111	02/10/2010
<b>BSW-LR10-00083</b>	WEST CHESTER	Residential	M5620211000057	02/10/2010
<b>BSW-LR10-00090</b>	LIBERTY	Residential	D2020298000025	02/12/2010
<b>BSW-LR10-00091</b>	FAIRFIELD	Residential	A0300145000089	02/12/2010
<b>BSW-LR10-00092</b>	LIBERTY	Residential	D2020298000072	02/12/2010
<b>BSW-LR10-00093</b>	LIBERTY	Residential	D2020298000010	02/12/2010

Attachment "B"  
 Applicable Sites for Construction Site Runoff Control  
**Total Permit Count from 1/1/2010 to 12/31/2010**

<u>Permit #</u>	<u>Township</u>	<u>Category</u>	<u>Parcel #</u>	<u>Date Opened</u>
<b>BSW-LR10-00094</b>	LIBERTY	Residential	D2020298000007	02/12/2010
<b>BSW-LR10-00102</b>	LIBERTY	Residential	D2020247000047	02/17/2010
<b>BSW-LR10-00103</b>	WEST CHESTER	Residential	M5620446000069	02/17/2010
<b>BSW-LR10-00105</b>	WEST CHESTER	Residential	M5620382000068	02/18/2010
<b>BSW-LR10-00106</b>	WEST CHESTER	Residential	M5620211000063	02/18/2010
<b>BSW-LR10-00107</b>	WEST CHESTER	Residential	M5620445000044	02/18/2010
<b>BSW-LR10-00114</b>	LIBERTY	Residential	D2020276000042	02/18/2010
<b>BSW-LR10-00115</b>	LIBERTY	Residential	D2020276000054	02/18/2010
<b>BSW-LR10-00134</b>	LIBERTY	Residential	D2020298000062	02/24/2010
<b>BSW-LR10-00135</b>	LIBERTY	Residential	D2010016000029	02/24/2010
<b>BSW-LR10-00136</b>	MADISON	Residential	E2210013000016	02/24/2010
<b>BSW-LR10-00137</b>	LIBERTY	Residential	D2020303000038	02/24/2010
<b>BSW-LR10-00146</b>	LIBERTY	Residential	D2020300000033	02/25/2010
<b>BSW-LR10-00147</b>	LIBERTY	Residential	D2020286000035	02/25/2010
<b>BSW-LR10-00148</b>	LIBERTY	Residential	D2020300000026	02/25/2010
<b>BSW-LR10-00149</b>	ROSS	Residential	K4620097000055	02/25/2010
<b>BSW-LR10-00150</b>	LIBERTY	Residential	D2020259000036	02/25/2010
<b>BSW-LR10-00151</b>	WAYNE	Residential	N5920029000077	02/25/2010
<b>BSW-LR10-00152</b>	WEST CHESTER	Residential	M5620211000078	02/25/2010

Attachment "B"  
 Applicable Sites for Construction Site Runoff Control  
**Total Permit Count from 1/1/2010 to 12/31/2010**

<u>Permit #</u>	<u>Township</u>	<u>Category</u>	<u>Parcel #</u>	<u>Date Opened</u>
<b>BSW-LR10-00153</b>	ROSS	Residential	K4620098000064	02/25/2010
<b>BSW-LR10-00159</b>	LIBERTY	Residential	D2020054000034	03/01/2010
<b>BSW-LR10-00162</b>	HANOVER	Residential	B1010033000049	03/02/2010
<b>BSW-LR10-00163</b>	WEST CHESTER	Residential	M5620211000080	03/02/2010
<b>BSW-LR10-00164</b>	LIBERTY	Residential	D2020300000022	03/02/2010
<b>BSW-LR10-00165</b>	ROSS	Residential	K4620102000065	03/02/2010
<b>BSW-LR10-00177</b>	HANOVER	Residential	B1220140000005	03/05/2010
<b>BSW-LR10-00178</b>	WEST CHESTER	Residential	M5620211000076	03/05/2010
<b>BSW-LR10-00180</b>	WEST CHESTER	Residential	M5620212000051	03/05/2010
<b>BSW-LR10-00181</b>	WEST CHESTER	Residential	M5620211000091	03/05/2010
<b>BSW-LR10-00182</b>	WEST CHESTER	Residential	M5620464000028	03/05/2010
<b>BSW-LR10-00183</b>	FAIRFIELD	Residential	A0300015000019	03/08/2010
<b>BSW-LR10-00185</b>	LIBERTY	Residential	D2020299000017	03/08/2010
<b>BSW-LR10-00187</b>	WEST CHESTER	Residential	M5620457000019	03/09/2010
<b>BSW-LR10-00189</b>	FAIRFIELD	Residential	A0300169000025	03/10/2010
<b>BSW-LR10-00190</b>	FAIRFIELD	Residential	A0300169000008	03/10/2010
<b>BSW-LR10-00191</b>	FAIRFIELD	Residential	A0300169000006	03/10/2010
<b>BSW-LR10-00192</b>	LIBERTY	Residential	D2020259000042	03/10/2010
<b>BSW-LR10-00196</b>	FAIRFIELD	Residential	A0300149000033	03/12/2010

Attachment "B"  
 Applicable Sites for Construction Site Runoff Control  
**Total Permit Count from 1/1/2010 to 12/31/2010**

<u>Permit #</u>	<u>Township</u>	<u>Category</u>	<u>Parcel #</u>	<u>Date Opened</u>
<b>BSW-LR10-00198</b>	LIBERTY	Residential	D2020298000042	03/16/2010
<b>BSW-LR10-00199</b>	LIBERTY	Residential	D2020236000044	03/16/2010
<b>BSW-LR10-00200</b>	LIBERTY	Residential	D2020277000013	03/16/2010
<b>BSW-LR10-00201</b>	FAIRFIELD	Residential	A0300169000010	03/16/2010
<b>BSW-LR10-00204</b>	WEST CHESTER	Residential	M5620447000082	03/17/2010
<b>BSW-LR10-00209</b>	WEST CHESTER	Residential	M5620456000047	03/19/2010
<b>BSW-LR10-00210</b>	LIBERTY	Residential	D2020250000042	03/19/2010
<b>BSW-LR10-00211</b>	LIBERTY	Residential	D2020299000036	03/19/2010
<b>BSW-LR10-00221</b>	MORGAN	Residential	G3210008000053	03/24/2010
<b>BSW-LR10-00222</b>	ROSS	Residential	K4620031000044	03/24/2010
<b>BSW-LR10-00235</b>	LIBERTY	Residential	D2020230000033	03/29/2010
<b>BSW-LR10-00236</b>	FAIRFIELD	Residential	A0300169000002	03/29/2010
<b>BSW-LR10-00237</b>	LIBERTY	Residential	D2020288000038	03/29/2010
<b>BSW-LR10-00238</b>	ROSS	Residential	K4620102000053	03/29/2010
<b>BSW-LR10-00239</b>	FAIRFIELD	Residential	A0300169000009	03/29/2010
<b>BSW-LR10-00245</b>	FAIRFIELD	Residential	A0300164000020	03/31/2010
<b>BSW-LR10-00246</b>	LIBERTY	Residential	D2020298000073	03/31/2010
<b>BSW-LR10-00249</b>	WEST CHESTER	Residential	M5620211000072	03/31/2010
<b>BSW-LR10-00250</b>	WEST CHESTER	Residential	M5620211000084	03/31/2010

Attachment "B"  
 Applicable Sites for Construction Site Runoff Control  
**Total Permit Count from 1/1/2010 to 12/31/2010**

<u>Permit #</u>	<u>Township</u>	<u>Category</u>	<u>Parcel #</u>	<u>Date Opened</u>
<b>BSW-LR10-00251</b>	LIBERTY	Residential	D2020076000018	04/01/2010
<b>BSW-LR10-00252</b>	LIBERTY	Residential	D2020276000045	04/01/2010
<b>BSW-LC10-00259</b>	FAIRFIELD	Commercial	A0300011000016	04/05/2010
<b>BSW-LR10-00260</b>	LIBERTY	Residential	D2020303000033	04/05/2010
<b>BSW-LR10-00262</b>	WEST CHESTER	Residential	M5620464000009	04/06/2010
<b>BSW-LR10-00263</b>	WEST CHESTER	Residential	M5620464000008	04/06/2010
<b>BSW-LR10-00264</b>	WEST CHESTER	Residential	M5620211000059	04/06/2010
<b>BSW-LR10-00266</b>	WEST CHESTER	Residential	M5620431000040	04/06/2010
<b>BSW-LR10-00269</b>	LIBERTY	Residential	D2020298000017	04/08/2010
<b>BSW-LC10-00279</b>	WEST CHESTER	Commercial	M5610004000082	04/13/2010
<b>BSW-LR10-00284</b>	FAIRFIELD	Residential	A0300169000005	04/14/2010
<b>BSW-LR10-00285</b>	FAIRFIELD	Residential	A0300169000022	04/14/2010
<b>BSW-LR10-00286</b>	FAIRFIELD	Residential	A0300169000012	04/14/2010
<b>BSW-LR10-00287</b>	WEST CHESTER	Residential	M5620467000003	04/14/2010
<b>BSW-LR10-00289</b>	LIBERTY	Residential	D2020303000011	04/14/2010
<b>BSW-LC10-00293</b>	LIBERTY	Commercial	D2010017000045	04/15/2010
<b>BSW-LC10-00298</b>	MILFORD	Commercial	F2700030000002	04/15/2010
<b>BSW-LR10-00294</b>	WEST CHESTER	Residential	M5620437000016	04/15/2010
<b>BSW-LR10-00295</b>	FAIRFIELD	Residential	A0300169000007	04/15/2010

Attachment "B"  
 Applicable Sites for Construction Site Runoff Control  
**Total Permit Count from 1/1/2010 to 12/31/2010**

<u>Permit #</u>	<u>Township</u>	<u>Category</u>	<u>Parcel #</u>	<u>Date Opened</u>
<b>BSW-LR10-00296</b>	FAIRFIELD	Residential	A0300072000087	04/15/2010
<b>BSW-LR10-00297</b>	WEST CHESTER	Residential	M5620467000006	04/15/2010
<b>BSW-LR10-00317</b>	LIBERTY	Residential	D2020294000001	04/20/2010
<b>BSW-LR10-00318</b>	WEST CHESTER	Residential	M5620429000059	04/20/2010
<b>BSW-LR10-00319</b>	LIBERTY	Residential	D2020299000032	04/20/2010
<b>BSW-LR10-00320</b>	MADISON	Residential	E2220072000019	04/20/2010
<b>BSW-LR10-00323</b>	WEST CHESTER	Residential	M5620446000089	04/23/2010
<b>BSW-LR10-00324</b>	LIBERTY	Residential	D2020276000051	04/23/2010
<b>BSW-LR10-00335</b>	LIBERTY	Residential	D2020202000028	04/27/2010
<b>BSW-LR10-00336</b>	LIBERTY	Residential	D2020303000010	04/27/2010
<b>BSW-LR10-00337</b>	LIBERTY	Residential	D2020250000033	04/27/2010
<b>BSW-LC10-00339</b>	LIBERTY	Commercial	D2030049000022	04/28/2010
<b>BSW-LC10-00345</b>	FAIRFIELD	Commercial	A0200001000015	04/29/2010
<b>BSW-LR10-00342</b>	LIBERTY	Residential	D2020298000053	04/29/2010
<b>BSW-LR10-00343</b>	LIBERTY	Residential	D2020291000003	04/29/2010
<b>BSW-LR10-00344</b>	WEST CHESTER	Residential	M5620382000069	04/29/2010
<b>BSW-LR10-00359</b>	LIBERTY	Residential	D2020299000037	05/05/2010
<b>BSW-LR10-00362</b>	LIBERTY	Residential	D2020303000006	05/05/2010
<b>BSW-LR10-00363</b>	WEST CHESTER	Residential	D2020303000005	05/05/2010

Attachment "B"  
 Applicable Sites for Construction Site Runoff Control  
**Total Permit Count from 1/1/2010 to 12/31/2010**

<u>Permit #</u>	<u>Township</u>	<u>Category</u>	<u>Parcel #</u>	<u>Date Opened</u>
<b>BSW-LR10-00365</b>	WEST CHESTER	Residential	M5620212000053	05/05/2010
<b>BSW-LR10-00366</b>	WEST CHESTER	Residential	M5620464000029	05/05/2010
<b>BSW-LR10-00367</b>	LIBERTY	Residential	D2020293000006	05/05/2010
<b>BSW-LC10-00374</b>	FAIRFIELD	Commercial	A0300008000065	05/07/2010
<b>BSW-LR10-00376</b>	ROSS	Residential	K4620031000033	05/11/2010
<b>BSW-LC10-00382</b>	FAIRFIELD	Commercial	A0300008000065	05/12/2010
<b>BSW-LC10-00388</b>	FAIRFIELD	Commercial	A0300025000072	05/13/2010
<b>BSW-LR10-00383</b>	WEST CHESTER	Residential	M5640130000168	05/13/2010
<b>BSW-LR10-00384</b>	LIBERTY	Residential	D2020054000026	05/13/2010
<b>BSW-LR10-00385</b>	WEST CHESTER	Residential	M5620212000047	05/13/2010
<b>BSW-LR10-00386</b>	WEST CHESTER	Residential	M5620467000017	05/13/2010
<b>BSW-LR10-00387</b>	WEST CHESTER	Residential	M5620464000032	05/13/2010
<b>BSW-LR10-00394</b>	ROSS	Residential	K4620031000041	05/17/2010
<b>BSW-LR10-00405</b>	FAIRFIELD	Residential	A0300166000046	05/17/2010
<b>BSW-LR10-00406</b>	ROSS	Residential	K4620102000029	05/17/2010
<b>BSW-LR10-00407</b>	ROSS	Residential	K4620102000056	05/17/2010
<b>BSW-LC10-00414</b>	LIBERTY	Commercial	D2010017000045	05/19/2010
<b>BSW-LC10-00422</b>	WEST CHESTER	Commercial	M5620050000033	05/25/2010
<b>BSW-LR10-00417</b>	FAIRFIELD	Residential	A0300166000026	05/25/2010



Attachment "B"  
 Applicable Sites for Construction Site Runoff Control  
**Total Permit Count from 1/1/2010 to 12/31/2010**

<u>Permit #</u>	<u>Township</u>	<u>Category</u>	<u>Parcel #</u>	<u>Date Opened</u>
<b>BSW-LR10-00418</b>	WEST CHESTER	Residential	M5620439000069	05/25/2010
<b>BSW-LR10-00430</b>	LIBERTY	Residential	D2020295000024	05/27/2010
<b>BSW-LR10-00431</b>	FAIRFIELD	Residential	A0300158000055	05/27/2010
<b>BSW-LC10-00432</b>	FAIRFIELD	Commercial	A0300008000065	05/28/2010
<b>BSW-LC10-00433</b>	MADISON	Commercial	E2210036000027	05/28/2010
<b>BSW-LR10-00435</b>	WEST CHESTER	Residential	M5620211000083	05/28/2010
<b>BSW-LC10-00444</b>	LIBERTY	Commercial	D2010014000015	06/03/2010
<b>BSW-LR10-00445</b>	LIBERTY	Residential	D2020054000054	06/03/2010
<b>BSW-LR10-00446</b>	FAIRFIELD	Residential	A0300158000037	06/03/2010
<b>BSW-LR10-00447</b>	FAIRFIELD	Residential	A0300158000033	06/03/2010
<b>BSW-LR10-00448</b>	FAIRFIELD	Residential	A0300158000032	06/03/2010
<b>BSW-LR10-00454</b>	LIBERTY	Residential	D2020252000012	06/08/2010
<b>BSW-LR10-00458</b>	WEST CHESTER	Residential	M5620212000058	06/10/2010
<b>BSW-LR10-00459</b>	WEST CHESTER	Residential	M5620211000062	06/10/2010
<b>BSW-LR10-00460</b>	LIBERTY	Residential	D2020263000042	06/10/2010
<b>BSW-LR10-00461</b>	LIBERTY	Residential	D2020263000041	06/10/2010
<b>BSW-LC10-00467</b>	OXFORD	Commercial	H3610026000034	06/14/2010
<b>BSW-LR10-00471</b>	HANOVER	Residential	B1010009000035	06/16/2010
<b>BSW-LR10-00475</b>	FAIRFIELD	Residential	A0300169000024	06/17/2010

Attachment "B"  
 Applicable Sites for Construction Site Runoff Control  
**Total Permit Count from 1/1/2010 to 12/31/2010**

<u>Permit #</u>	<u>Township</u>	<u>Category</u>	<u>Parcel #</u>	<u>Date Opened</u>
<b>BSW-LC10-00478</b>	WAYNE	Commercial	N6200048000025	06/23/2010
<b>BSW-LC10-00479</b>	WEST CHESTER	Commercial	M5610008000059	06/23/2010
<b>BSW-LC10-00484</b>	WEST CHESTER	Commercial	M5620008000041	06/24/2010
<b>BSW-LR10-00485</b>	LIBERTY	Residential	D2020278000035	06/24/2010
<b>BSW-LR10-00486</b>	LIBERTY	Residential	D2020171000026	06/24/2010
<b>BSW-LR10-00487</b>	LIBERTY	Residential	D2020178000084	06/24/2010
<b>BSW-LR10-00488</b>	LIBERTY	Residential	D2020278000005	06/24/2010
<b>BSW-LR10-00489</b>	LIBERTY	Residential	D2020291000027	06/25/2010
<b>BSW-LR10-00490</b>	WEST CHESTER	Residential	M5620439000072	06/25/2010
<b>BSW-LC10-00497</b>	FAIRFIELD	Commercial	A0300160000014	06/29/2010
<b>BSW-LR10-00503</b>	WEST CHESTER	Residential	M5620381000152	07/01/2010
<b>BSW-LR10-00504</b>	WEST CHESTER	Residential	M5620428000031	07/01/2010
<b>BSW-LR10-00509</b>	WEST CHESTER	Residential	M5620211000061	07/02/2010
<b>BSW-LR10-00518</b>	FAIRFIELD	Residential	A0300169000003	07/08/2010
<b>BSW-LR10-00519</b>	LIBERTY	Residential	D2020303000015	07/08/2010
<b>BSW-LR10-00520</b>	LIBERTY	Residential	D2020054000033	07/08/2010
<b>BSW-LR10-00521</b>	HANOVER	Residential	B1320112000030	07/08/2010
<b>BSW-LC10-00527</b>	LIBERTY	Commercial	D2010004000052	07/09/2010
<b>BSW-LR10-00529</b>	LIBERTY	Residential	D2020208000037	07/09/2010

Attachment "B"  
 Applicable Sites for Construction Site Runoff Control  
**Total Permit Count from 1/1/2010 to 12/31/2010**

<u>Permit #</u>	<u>Township</u>	<u>Category</u>	<u>Parcel #</u>	<u>Date Opened</u>
<b>BSW-LR10-00530</b>	WEST CHESTER	Residential	M5620211000060	07/09/2010
<b>BSW-LR10-00531</b>	WEST CHESTER	Residential	M5620211000093	07/09/2010
<b>BSW-LR10-00532</b>	WEST CHESTER	Residential	M5620464000023	07/09/2010
<b>BSW-LR10-00533</b>	ROSS	Residential	K4620098000046	07/09/2010
<b>BSW-LR10-00536</b>	LIBERTY	Residential	D2020293000005	07/12/2010
<b>BSW-LR10-00537</b>	LIBERTY	Residential	D2020276000049	07/12/2010
<b>BSW-LR10-00538</b>	LIBERTY	Residential	D2020250000035	07/12/2010
<b>BSW-LR10-00539</b>	LIBERTY	Residential	D2020208000036	07/12/2010
<b>BSW-LR10-00542</b>	LIBERTY	Residential	D2020257000028	07/13/2010
<b>BSW-LC10-00552</b>	LIBERTY	Commercial	D2010017000125	07/16/2010
<b>BSW-LR10-00550</b>	FAIRFIELD	Residential	A0300032000030	07/16/2010
<b>BSW-LR10-00553</b>	LIBERTY	Residential	D2020054000029	07/16/2010
<b>BSW-LR10-00555</b>	LIBERTY	Residential	D2020298000064	07/16/2010
<b>BSW-LR10-00557</b>	ROSS	Residential	K4620102000028	07/19/2010
<b>BSW-LR10-00558</b>	MORGAN	Residential	G3210010000056	07/19/2010
<b>BSW-LR10-00563</b>	WEST CHESTER	Residential	M5620429000057	07/23/2010
<b>BSW-LR10-00564</b>	WEST CHESTER	Residential	M5620428000032	07/23/2010
<b>BSW-LR10-00565</b>	LIBERTY	Residential	D2020303000035	07/23/2010
<b>BSW-LR10-00566</b>	LIBERTY	Residential	D2020294000010	07/23/2010

Attachment "B"  
 Applicable Sites for Construction Site Runoff Control  
**Total Permit Count from 1/1/2010 to 12/31/2010**

<u>Permit #</u>	<u>Township</u>	<u>Category</u>	<u>Parcel #</u>	<u>Date Opened</u>
<b>BSW-LR10-00567</b>	WEST CHESTER	Residential	M5620436000020	07/23/2010
<b>BSW-LC10-00572</b>	WEST CHESTER	Commercial	M5610033000073	07/27/2010
<b>BSW-LR10-00570</b>	LIBERTY	Residential	D2020298000023	07/27/2010
<b>BSW-LR10-00571</b>	LIBERTY	Residential	D2020291000063	07/27/2010
<b>BSW-LC10-00584</b>	WEST CHESTER	Commercial	M5620008000039	08/03/2010
<b>BSW-LC10-00587</b>	WEST CHESTER	Commercial	M5620410000012	08/04/2010
<b>BSW-LR10-00592</b>	FAIRFIELD	Residential	A0300158000054	08/04/2010
<b>BSW-LR10-00599</b>	LIBERTY	Residential	D2020291000077	08/10/2010
<b>BSW-LR10-00600</b>	LIBERTY	Residential	M5620464000030	08/10/2010
<b>BSW-LR10-00609</b>	FAIRFIELD	Residential	A0300166000048	08/13/2010
<b>BSW-LR10-00610</b>	MADISON	Residential	E2220080000034	08/13/2010
<b>BSW-LR10-00611</b>	FAIRFIELD	Residential	A0300032000017	08/13/2010
<b>BSW-LR10-00612</b>	FAIRFIELD	Residential	A0300149000036	08/13/2010
<b>BSW-LR10-00613</b>	OXFORD	Residential	H3610012000008	08/13/2010
<b>BSW-LC10-00623</b>	LIBERTY	Commercial	D2010013000033	08/19/2010
<b>BSW-LR10-00624</b>	FAIRFIELD	Residential	A0300166000008	08/20/2010
<b>BSW-LR10-00625</b>	WEST CHESTER	Residential	M5620332000039	08/20/2010
<b>BSW-LC10-00631</b>	WEST CHESTER	Commercial	M5620460000011	08/24/2010
<b>BSW-LR10-00634</b>	ST CLAIR	Residential	L5300004000012	08/25/2010

Attachment "B"  
 Applicable Sites for Construction Site Runoff Control  
**Total Permit Count from 1/1/2010 to 12/31/2010**

<u>Permit #</u>	<u>Township</u>	<u>Category</u>	<u>Parcel #</u>	<u>Date Opened</u>
<b>BSW-LR10-00639</b>	LIBERTY	Residential	D2020278000034	08/27/2010
<b>BSW-LR10-00640</b>	LIBERTY	Residential	D2020054000037	08/27/2010
<b>BSW-LR10-00641</b>	ROSS	Residential	K4620102000042	08/27/2010
<b>BSW-LR10-00642</b>	FAIRFIELD	Residential	A0300165000031	08/27/2010
<b>BSW-LR10-00643</b>	FAIRFIELD	Residential	A0300164000013	08/27/2010
<b>BSW-LR10-00661</b>	FAIRFIELD	Residential	A0300166000020	09/09/2010
<b>BSW-LR10-00662</b>	FAIRFIELD	Residential	A0300166000043	09/09/2010
<b>BSW-LR10-00663</b>	LIBERTY	Residential	D2020274000031	09/09/2010
<b>BSW-LR10-00664</b>	WEST CHESTER	Residential	M5620467000005	09/09/2010
<b>BSW-LR10-00665</b>	WEST CHESTER	Residential	M5620457000021	09/09/2010
<b>BSW-LR10-00667</b>	LIBERTY	Residential	D2020286000042	09/10/2010
<b>BSW-LR10-00669</b>	ROSS	Residential	K4610002000073	09/13/2010
<b>BSW-LC10-00689</b>	LIBERTY	Commercial	M5610005000001	09/17/2010
<b>BSW-LR10-00686</b>	LIBERTY	Residential	D2020259000035	09/17/2010
<b>BSW-LR10-00687</b>	LIBERTY	Residential	D2020122000081	09/17/2010
<b>BSW-LR10-00688</b>	LIBERTY	Residential	D2020241000032	09/17/2010
<b>BSW-LR10-00690</b>	WEST CHESTER	Residential	M5620429000013	09/17/2010
<b>BSW-LR10-00695</b>	LIBERTY	Residential	D2020293000017	09/23/2010
<b>BSW-LR10-00702</b>	LIBERTY	Residential	D2020241000033	09/24/2010

Attachment "B"  
 Applicable Sites for Construction Site Runoff Control  
**Total Permit Count from 1/1/2010 to 12/31/2010**

<u>Permit #</u>	<u>Township</u>	<u>Category</u>	<u>Parcel #</u>	<u>Date Opened</u>
<b>BSW-LR10-00703</b>	LIBERTY	Residential	D2020054000048	09/24/2010
<b>BSW-LR10-00704</b>	ROSS	Residential	K4620102000031	09/24/2010
<b>BSW-LR10-00705</b>	WEST CHESTER	Residential	M5620381000129	09/24/2010
<b>BSW-LR10-00708</b>	WEST CHESTER	Residential	M5620446000059	09/27/2010
<b>BSW-LR10-00709</b>	LIBERTY	Residential	D2020054000030	09/27/2010
<b>BSW-LC10-00712</b>	LEMON	Commercial	C1710018000111	09/29/2010
<b>BSW-LC10-00717</b>	ROSS	Commercial	K4610026000017	09/30/2010
<b>BSW-LR10-00715</b>	WEST CHESTER	Residential	M5620467000001	09/30/2010
<b>BSW-LR10-00719</b>	FAIRFIELD	Residential	A0300166000045	10/01/2010
<b>BSW-LR10-00720</b>	LIBERTY	Residential	D2020178000087	10/01/2010
<b>BSW-LR10-00721</b>	LIBERTY	Residential	D2020278000041	10/01/2010
<b>BSW-LR10-00726</b>	ROSS	Residential	K4620102000027	10/05/2010
<b>BSW-LR10-00727</b>	LIBERTY	Residential	D2020299000044	10/05/2010
<b>BSW-LR10-00728</b>	FAIRFIELD	Residential	A0300166000029	10/05/2010
<b>BSW-LR10-00729</b>	LIBERTY	Residential	D2020276000043	10/05/2010
<b>BSW-LR10-00733</b>	LIBERTY	Residential	D2020291000072	10/08/2010
<b>BSW-LR10-00734</b>	WEST CHESTER	Residential	M5620468000010	10/08/2010
<b>BSW-LC10-00761</b>	LIBERTY	Commercial	D2010013000097	10/20/2010
<b>BSW-LR10-00767</b>	FAIRFIELD	Residential	A0300166000019	10/22/2010

Attachment "B"  
 Applicable Sites for Construction Site Runoff Control  
**Total Permit Count from 1/1/2010 to 12/31/2010**

<u>Permit #</u>	<u>Township</u>	<u>Category</u>	<u>Parcel #</u>	<u>Date Opened</u>
<b>BSW-LR10-00768</b>	FAIRFIELD	Residential	A0300166000023	10/22/2010
<b>BSW-LR10-00769</b>	FAIRFIELD	Residential	A0300166000041	10/22/2010
<b>BSW-LR10-00770</b>	FAIRFIELD	Residential	A0300166000049	10/22/2010
<b>BSW-LR10-00771</b>	WEST CHESTER	Residential	M5620468000011	10/22/2010
<b>BSW-LR10-00772</b>	WEST CHESTER	Residential	M5620468000011	10/22/2010
<b>BSW-LR10-00773</b>	LIBERTY	Residential	D2020259000032	10/22/2010
<b>BSW-LR10-00774</b>	LIBERTY	Residential	D2020259000031	10/22/2010
<b>BSW-LR10-00775</b>	LIBERTY	Residential	D2020278000004	10/22/2010
<b>BSW-LR10-00782</b>	WEST CHESTER	Residential	M5620211000094	10/28/2010
<b>BSW-LR10-00783</b>	FAIRFIELD	Residential	A0300032000034	10/28/2010
<b>BSW-LR10-00784</b>	FAIRFIELD	Residential	A0300166000022	10/28/2010
<b>BSW-LR10-00793</b>	LEMON	Residential	D2020282000101	11/05/2010
<b>BSW-LR10-00794</b>	ROSS	Residential	K4620102000052	11/05/2010
<b>BSW-LC10-00795</b>	LEMON	Commercial	C1910001000032	11/08/2010
<b>BSW-LR10-00797</b>	FAIRFIELD	Residential	A0300032000031	11/15/2010
<b>BSW-LR10-00809</b>	LIBERTY	Residential	D2020171000015	11/18/2010
<b>BSW-LR10-00810</b>	ROSS	Residential	K4620104000004	11/18/2010
<b>BSW-LC10-00813</b>	FAIRFIELD	Commercial	A0300019000042	11/22/2010
<b>BSW-LC10-00822</b>	WEST CHESTER	Commercial	M5610012000088	11/30/2010



Attachment "B"  
 Applicable Sites for Construction Site Runoff Control  
**Total Permit Count from 1/1/2010 to 12/31/2010**

<u>Permit #</u>	<u>Township</u>	<u>Category</u>	<u>Parcel #</u>	<u>Date Opened</u>
<b>BSW-LR10-00824</b>	LIBERTY	Residential	D2020054000037	12/01/2010
<b>BSW-LR10-00829</b>	MADISON	Residential	E2220170000010	12/03/2010
<b>BSW-LR10-00830</b>	LIBERTY	Residential	D2020239000062	12/03/2010
<b>BSW-LR10-00834</b>	WEST CHESTER	Residential	M5620381000159	12/07/2010
<b>BSW-LR10-00839</b>	FAIRFIELD	Residential	A0300166000047	12/09/2010
<b>BSW-LR10-00841</b>	LIBERTY	Residential	D2020286000002	12/10/2010
<b>BSW-LR10-00847</b>	LIBERTY	Residential	D2020054000055	12/16/2010
<b>BSW-LR10-00848</b>	WEST CHESTER	Residential	M5620211000056	12/16/2010
<b>BSW-LR10-00849</b>	WEST CHESTER	Residential	M5620464000031	12/16/2010
<b>BSW-LR10-00850</b>	FAIRFIELD	Residential	A0300166000024	12/16/2010
<b>BSW-LR10-00851</b>	FAIRFIELD	Residential	A0300158000035	12/16/2010
<b>BSW-LR10-00852</b>	FAIRFIELD	Residential	A0300158000041	12/17/2010
<b>BSW-LC10-00862</b>	WEST CHESTER	Commercial	M5610004000082	12/20/2010
<b>BSW-LR10-00856</b>	LIBERTY	Residential	D2020298000063	12/20/2010
<b>BSW-LR10-00857</b>	WEST CHESTER	Residential	M5620446000082	12/20/2010
<b>BSW-LR10-00858</b>	WEST CHESTER	Residential	M5620439000036	12/20/2010
<b>BSW-LR10-00859</b>	LIBERTY	Residential	D2020054000032	12/20/2010
<b>BSW-LC10-00869</b>	WEST CHESTER	Commercial	M5620448000007	12/21/2010
<b>BSW-LC10-00870</b>	WEST CHESTER	Commercial	M5620448000008	12/21/2010

Attachment "B"  
Applicable Sites for Construction Site Runoff Control  
**Total Permit Count from 1/1/2010 to 12/31/2010**

<u>Permit #</u>	<u>Township</u>	<u>Category</u>	<u>Parcel #</u>	<u>Date Opened</u>
<b>BSW-LR10-00871</b>	WEST CHESTER	Residential	M5620211000055	12/22/2010
<b>BSW-LR10-00874</b>	FAIRFIELD	Residential	A0300162000008	12/23/2010
<b>BSW-LR10-00876</b>	WEST CHESTER	Residential	M5620338000029	12/23/2010
<b>BSW-LR10-00877</b>	WEST CHESTER	Residential	M5620446000079	12/23/2010
<b>BSW-LR10-00878</b>	FAIRFIELD	Residential	A0300164000016	12/23/2010

**Total Permit Count: 308**

---

**Attachment “C”**  
**Butler County Storm Water District Bonus Activities**

**B1**

**Activity: Watershed Signage**

**Date: 01/01/2010 - 12/31/2010**

The Butler County Storm Water District is involved with watershed awareness and education throughout Butler County. This is accomplished in part by coordinating stream crossing sign installation with public awareness and education programs. To date Butler County Storm Water District is responsible for installation, maintenance and replacement of stream crossing signage at 172 locations. An additional 37 stream crossing locations were identified for installation in 2011.

**B2**

**Activity Title: Southwest Ohio Sediment and Erosion Control Field Day**

**Date: 02/24/2010**

The event was held at the Clermont county Fairgrounds in Owensville, Ohio. Over 120 developers, home builders, engineers, contractors, and construction site inspectors attended. Since its inception in 2002, this event has educated builders, contractors and other stakeholders about the importance of erosion and sediment control, storm water management, and water quality protection through the expertise of various speakers, the exhibition of hands-on demonstrations of best management practices and product vending. The highlights for 2010 included speakers from the National Association of Home Builders Research Center whose focus was Green Building Programs and Energy Efficiency.

**B3**

**Activity: Great Miami River Days Festival**

**Date: 01/01/2010 - 12/31/2010**

The Butler County Storm Water District is a major sponsor and a participating member of the Great Miami River Days Festival Committee. Great Miami River Days features historical and recreational events while conservation and recreation organizations participate with hands-on displays to help citizens understand the value of the river – both as a natural resource and an economic-development tool. It is estimated that over 30,000 people attended last year's event. Since October of 2003 a member of the Butler County Storm Water District has participated in all monthly meetings. Other groups participating in the Festival Planning committee include Friends of the Great Miami; Miami Conservancy District; St. Clair Township, Butler County; Butler SWCD, Butler County Storm Water District; Butler County Water and Sewer; Hamilton to New Baltimore Groundwater Consortium; Land Conservancy of Hamilton County. The event is used to promote watershed education and recreational activities associated with the Great Miami River. To find out more about River Days, visit <http://www.greatmiamiriverdays.org/>

**B4**

**Activity Title: Mill Creek Watershed Council**

**Date: 01/01/2010 - 12/31/2010**

A representative from the Butler County Storm Water District served on the Board of Trustees and participated in quarterly meetings of the Mill Creek Watershed Council. The purpose of the Mill Creek Watershed Council is to maintain and enhance the asset-value of the Mill Creek by providing resources to the communities and the region to realize lasting benefits. The Mill Creek Watershed Council is a publicly funded, non-profit corporation representing all 37 political jurisdictions in the Mill Creek watershed. The Council acts as a forum for making watershed-based decisions by convening and coordinating meetings and projects related to the improvement of the Mill Creek. Through these forums, the Council invites public input on watershed-related issues. The full council meets quarterly at locations throughout the watershed and creates a quarterly newsletter, Voice of the Mill Creek, that is mailed to approximately 1400 addresses throughout the watershed. Please visit the following website for additional information: <http://www.millcreekwatershed.org/home.html>

**B5****Activity Title: Water Management Association of Ohio & the Ohio Stormwater Association****Date: 01/01/2010 - 12/31/2010**

A representative from the Butler County Storm Water District serves on the Board of Directors and attended Ohio Stormwater Association Committee Meetings. The Ohio Stormwater Association is a group of public and private citizens dedicated to advancing the management of stormwater and related natural resources through education, leadership, watershed-based coordination and technical assistance in Ohio. The Ohio Stormwater Association is a not-for-profit, non-political organization. The Ohio Stormwater Association is organized formally as the stormwater division of the Water Management Association of Ohio which maintains a 501(c)4 status. The Ohio Stormwater Association provides educational and networking opportunities for people focused on reducing the negative impacts of stormwater runoff. The Ohio Stormwater Association provides quarterly educational meetings on topics of interest to our members and helps to sponsor the Ohio Stormwater Conference being held each spring.

**B6****Activity: Butler County Children's Water Festival - Classroom Presentation****Date: 10/14/2010**

The Butler County Water Festival was held October 14, 2010 at Miami University Hamilton. The "Hands on Day of Discovery" was attended by over 1,000 fourth, fifth and sixth graders, and over 100 presenters and volunteers from across Butler County. A representative from the Butler County Storm Water District guided approximately 30 children through classroom presentations. The children learned about various topics such as watersheds, aquifers, storm water, and non-point source pollution. The Butler County Storm Water District also supported the festival financially.

**B7****Activity: Public Presentations - Earth Day (Hamilton, Ohio)****Date: 04/23/10**

More than 20 state, regional and local environmental organizations, including the Butler County Storm Water District, were at the event to encourage recycling, resource conservation and awareness of local environmental issues. An estimated 750 people stopped by to improve their environmental awareness.

**B8****Activity: Public Presentations - EarthFest (Oxford, Ohio)****Date: 04/17/10**

The Butler Soil and Water Conservation District were at the event to encourage recycling, resource conservation and awareness of local environmental issues. Live music, informational displays and activities for children presented by numerous Miami and community groups were featured. An estimated 300 people stopped by to improve their environmental awareness.

**B9****Activity: Public Presentations - Test Your Well Water Event****Date: 03/23/2010**

Butler County Storm Water District participated with a display and provided information on the hazards of illicit discharge to 25 residents. This event was a free and confidential testing of well water samples for nitrates occurred at the Butler Soil and Water Conservation District facility. Test Your Well events invite private well owners to bring a sample of their well water to be tested for the presence of nitrates and other contaminants at no charge. An innovative aspect of the Test Your Well concept is utilizing students, community organizations and other volunteer groups to offer a valuable service in a non-threatening atmosphere. The events also offer teachable moment for well owners. They learn about non-point source contamination, receive information about water quality and pollution prevention, and have the opportunity to ask questions while their water is tested. Those conducting the event also benefit. They learn about the importance of environmental health, better understand their role in safeguarding source water quality, and have a raised awareness about source water that can be passed on in their communities.

**B10**

**Activity: Public Presentations - Butler County Stream Team Volunteer Appreciation & Training**  
**Date: 06/05/2010**

The volunteer appreciation event this year took a more informal approach. The Appreciation and Training Day included a pot luck lunch at Sebald Park which was followed by a summary of the data collected 2009 and an explanation of Credible Data Program. Topics included the certification process for Level 2 data collectors and proper sampling protocols. Afterward volunteers demonstrated the sampling techniques learned as they practiced taking samples from Elk Creek.

**B11**

**Activity: Public Presentations - Butler County Stream Macroinvertebrate Training**  
**Date: 08/21/2011 & 09/25/2011**

The Stream Team partners conducted two days of training to acquaint volunteers with macroinvertebrates (a.k.a. bugs) that live in Ohio streams. The August 21st event consisted of a three hour classroom session in the stream team laboratory. Participants learned about the different critters while using field guides and microscopes. The September 25th event focused on the collection of invertebrates in the Great Miami River while canoeing! It was an 8-mile trip, beginning just below the low-level dam in Hamilton (near MU, south of Columbia Bridge). Stops were made along the way at appropriate riffles so volunteers could learn how to collect macroinvertebrates and do a simple quality index.

**B12**

**Activity: Public Presentations - Ohio Storm Water Conference**  
**Date: 06/11/2010**

With the approval and cooperation of the Butler County Storm Water District, Alicia Shull from URS Corporation conducted a presentation titled, "Implementation of a District Wide PPGHP Program: Challenges and Successes". This presentation discussed the challenges faced, lessons learned and successes experienced in the development and implementation of Butler County Storm Water District's Pollution Prevention and Good Housekeeping Program (PPGHP), which included 7 Spill, Prevention, Control and Counter Measures (SPCC) Plans and training programs for all 16 co-permittees. District's creation of a Comprehensive Watershed Monitoring Plan. Over 400 people attended the conference.

**B13**

**Activity: Storm Water Hotline – Regional Storm Water Collaborative**  
**Date: 01/01/2010 – 12/31/2010**

The Butler County Storm Water District has partnered with the Regional Storm Water Collaborative to create a centralized storm water hotline number (513-946-3999) for Butler, Hamilton and Warren Counties and the newest collaborative member, Northern Kentucky. The Storm Water Hotline provides prompt service to residents in the tri-state region. The automated phone service directs the caller to the appropriate jurisdiction and enables citizens to call 24-hours a day, seven days a week to report any storm water concerns. The hotline number was publicized through the use billboard advertisements. For more information on the Regional Storm Water Collaborative and the non-point source pollution advertising campaign, please visit <http://www.savelocalwaters.org>

**B14**

**Activity: Illicit Discharge Brochure**  
**Date: 10/14/2010**

In an effort to inform the general public of hazards associated with illicit discharges and improper disposal of waste, the Butler County Storm Water District has distributed "Discover Storm Water" and "Watershed Protection" Project WET activity guides to 1300 children at the Butler County Water Festival.

**B15**

**Activity: Illicit Discharge Brochure**  
**Date: 03/25/2010**

In an effort to inform public employees, businesses and the general public of hazards associated with illicit discharges and improper disposal of waste, the Butler County Storm Water District has distributed "After the Storm" & "Discover Storm Water" brochures to 13 member governments. Thirty copies of each brochure (780 copies total) were provided to co-permittees for distribution at public meetings and in government building lobby areas.

**B16****Activity: Local restoration and habitat improvement projects****Date: 01/01/2010 - 12/31/2010**

*The Mill Creek Confluence Wetlands Creation Project* is a collaboration between MCWCC, Butler County Water and Sewer, Metropolitan Sewer District of Greater Cincinnati, and the City of Sharonville; the Project received a \$1.7 million Ohio Water Pollution Control Loan Fund through the Water Resource Restoration Sponsor Program (WRRSP) in late 2007. This project will bring the confluence of the Mill Creek (main stem) and East Fork into attainment with Warm Water Habitat Aquatic Life Use standards.

*The Mill Creek Confluence Restoration Project*: The project is a collaboration between MCWCC, Butler County Water and Sewer, Metropolitan Sewer District of Greater Cincinnati, and the City of Sharonville; the Project received a \$1.7 million Ohio Water Pollution Control Loan Fund through the Water Resource Restoration Sponsor Program (WRRSP) in late 2007. This project, will bring the confluence of the Mill Creek (main stem) and East Fork into attainment with Warm Water Habitat Aquatic Life Use standards. <http://www.oki.org/elements/DOC/Environment/WaterQuality/MillCreekHeadwatersProject.doc>

**B17****Activity: Five Star Restoration Grant - Wetland Extended Detention Basin Project****Date: 01/01/2010 - 12/31/2010**

Project partners continue to monitor an existing detention basin which was restored to a riparian wetland, principally to provide habitat and treat upland runoff before entering the Upper Mill Creek. The monitoring program was enacted by the partners to evaluate the efficiency of the wetland in its assimilation of pollutants following storm events. Serving as a natural method to treat non-point source runoff, the project also provides a local example of the type of palustrine environment that once existed in the Mill Creek Watershed before urban and suburban land uses dominated the landscape.

Project partners include the Butler SWCD, Butler County Stormwater District, Beckett Ridge HOA, Mill Creek Watershed Council, Ohio Department of Natural Resources, and Miami (OH) University's Institute of Environmental Sciences (IES)

**B18****Activity: Rain Garden Installation at Voice of America Park****Date: 01/01/2009 - Present**

Installation of the rain garden began in November of 2008. The selection and placement of plants was completed by the end of April 2009. The rain garden is located in a high traffic area directly in front of the "Boat House" facility. The display includes educational signage and is a great example of a residential application for rain gardens. The site continues to be inspected and maintained throughout the year as necessary.

**B19****Activity: Monitor BMP's – Butler County Engineers Office****Date: 01/01/2010 - 12/31/2010**

Several BMPs for the Butler County Engineer's Office were designed and installed at the property located at 1921 Fairgrove Avenue in Hamilton, Ohio. The facility improvements include a bioretention area, two oil & grit separators, and a water quality pond. The design of the bioretention area allows for the collection and treatment of storm water runoff from existing paved areas. In addition to providing pollutant removal, the bioretention facility adds aesthetic appeal to a currently bare area. The best management practices are inspected and maintained throughout the year as necessary.

**B20****Activity: Watershed Monitoring Network - Pilot Study-Four Mile Creek****Date: 01/01/2009 – Present**

The Butler County Storm Water District (BCSWD) recognizes that watershed monitoring data is fundamentally necessary to gain an understanding of the water quantity, water quality and nutrient budgets of Butler County watersheds. This project will assist BCSWD in managing water resources to meet multiple objectives within the County. Those objectives include:

- prediction of frequency and severity of floods
- establishing quantity and quality of water for aquatic life and recreation

- managing water use
- developing watershed policies, procedures, and action plans for land use and development

A monitoring network is the “backbone” for facilitating good decision-making toward comprehensive water resource management. BCSWD ultimately intends to collect countywide information to develop guidelines for future activities within its watersheds. This work will create building blocks to drive guidelines for future development within BCSWD watersheds. A pilot watershed monitoring project with Four Mile Creek will be invaluable for projecting BCSWD (and stakeholder) staffing, financial, and other resource needs required to extend monitoring from watershed to watershed. The pilot project will facilitate development of standard operating procedures and processes needed to improve, streamline, and ultimately replicate the processes into each additional watershed to be monitored.

#### **B21**

**Activity: P.R.I.D.E. Program Activity Description: Litter Collection and Clean-up**

**Date: 01/01/2010 - 12/31/2010**

The Butler County Sheriff’s Roadside Collection litter Program is called PRIDE. The acronym stands for “Providing Responsibilities for Inmates through Duties for the Environment”. Led by the litter crew supervisor, inmates from the Resolutions medium security prison collect litter along public rights-of-ways and in parks and, sometimes, assist in the removal of waste from illegal dumpsites.

- PRIDE Crew “common litter” collected in 2009 (in pounds): 21,588
- PRIDE Crew hours worked in 2010: 1,400 hours
- PRIDE Crew miles traveled in 2010: 661.78 miles

#### **B22**

**Activity: Computer Recycling Event**

**Date: 04/01/2010 - 09/30/2010**

Computer Recycling events are sponsored twice a month by Butler County’s Solid Waste Management District. The 2010 events were held at the Butler County Engineers Office (1921 Fairgrove Ave.) resulted in the collection of 176 tons of electronics and computer equipment and 3,011 participants.

#### **B23**

**Activity: Household Hazardous Waste Program**

**Date: 06/01/2010 - 09/30/2010**

Household Hazardous Waste Recycling Events are held weekly from June to September and are sponsored by Butler County’s Solid Waste Management District. The 2009 events resulted in 159 tons of household hazardous waste collected for safe processing, disposal, or recycling. Total number of participants was 3,766.

#### **B24**

**Activity: Curbside Freon Appliance Collection Program**

**Date: 04/01/2010 – 09/30/2010**

Curbside freon appliance collection is sponsored by Butler County’s Solid Waste Management District. The 2009 program resulted in the collection of 72 tons of freon containing appliances from 687 participating households.

#### **B25**

**Activity: Cleanup Event - Clean Sweep of the Great Miami River**

**Date: 05/01/2010**

Approximately 230 participants in Butler County collected 10.6 tons of litter and 142 tires at six sites along the Great Miami River in Butler. The event was coordinated in conjunction with the Clean Sweep of the Great Miami River.

#### **B26**

**Activity: Tire Collection at Ross High School**

**Date: 11/06/2010**

Tire collection is sponsored by Butler County’s Solid Waste Management District. The November event held at the Ross Township High School resulted in the collection of 98.3 tons of tons of tires and 380 people participated.

**B27****Activity: Tire Collection at St. Clair Township****Date: 11/06/2010**

Tire collection is sponsored by Butler County's Solid Waste Management District. The November event held at the Ross Township High School resulted in the collection of 163.9 tons of tires and 319 people participated.

**B28****Activity: Spring Clean Up Day – Fairfield Township****Date: April 2010**

In Spring of 2010 the township held the annual Fairfield Township Clean-up Day, a volunteer led effort that allowed residents to drop off their debris at dumpsters at four area township locations. Several businesses stepped up to help with the effort contributing dumpsters and the use of their locations. Volunteers cleaned up 37 miles of township roadway resulting in 32.6 tons of trash collected and 625 tires recycled.

**B29****Activity: Webcasts Series – Watershed & Stormwater Management****Dates: 6/16/2011; 8/18/2011; 10/20/2011; 12/15/2010**

In an effort to provide educational opportunities about stormwater and watershed management issues, the Butler County Storm Water District hosted a variety of webcast seminars produced by the Center for Watershed Protection. The topics covered included a discussion of the Watershed Treatment Model as a tool for TMDL & MS4 Tracking, Improvements in the Better Site Design process, Rooftop disconnection and rainwater harvesting, and webcasts on design, installation and maintenance of bioretention and permeable pavement. Forty people took advantage of this opportunity for training and open discussion of storm water management.