



NPDES Small MS4 General Permit (OHQ000002) Annual Reporting Form

Instructions for completing this form:

- OHQ000002 requires that this form be used when submitting annual reports. You may request approval to use your own reporting format.
- Annual Reports are due annually on or before April 1st.
- Complete the form and sign and date the certification statement below.
- If more space is needed than is provided, identify within the provided space that Attachment A, B, C, etc. has been attached.
- If an item of the form is not applicable for your program (such as street sweeping), fill in N/A in the space provided.
- Don't include attachments such as brochures, newspaper clips, sign-in sheets, etc. related to your program with this form. You only need to summarize these within this report. These records must be filed and will be needed during program audits.
- When complete, submit this Annual Report form to the following address:
Ohio Environmental Protection Agency
Division of Surface Water
Storm Water Program – Small MS4
P.O. Box 1049
Columbus, Ohio 43216-1049

Small MS4 Annual Report for Year: 2012		
Ohio EPA Facility Permit Number: 1GQ00051*BG		
Name of MS4: Butler County Storm Water District		
Primary Contact: Gregory J. Wilkens, P.E., P.S.		Title: Storm Water Engineer
Mailing Address: 1921 Fairgrove Avenue		
City: Hamilton	Zip Code: Ohio	County: Butler
Telephone Number: 513-867-5744	Email Address: wilkensg@bceo.org	

Include or attach a Table of Organization. Indicate who (name and contact information) is responsible for overall management and implementation of your program, and if different, each minimum control measure of your program. Identify how development and implementation across multiple positions, agencies and departments occur. Also, identify any Memorandum of Understandings (MOUs) or other such agreements that exist.

- Attachment "A" - Organizational Chart
- Attachment "B" - Applicable Sites for Construction Site Runoff Control
- Attachment "C" - Bonus Activities

I certify under penalty of law that this document and all attachments were prepared under my direction or supervision in accordance with a system designed to assure that qualified personnel properly gather and evaluate the information submitted. Based on my inquiry of the person or persons who manage the system, or those persons directly responsible for gathering the information, the information submitted is, to the best of my knowledge and belief, true, accurate and complete. I am aware that there are significant penalties for submitting false information, including possibility of fine and imprisonment for knowing violations.

Print Name: Gregory J. Wilkens, P.E., P.S.

Print Title: Storm Water Engineer

Signature: Date: June 7, 2013



SMALL MS4 ANNUAL REPORT FORM

State of Ohio Environmental Protection Agency

PUBLIC EDUCATION & OUTREACH
 Estimate Your Permit Area's Total Population: 144,795

BMP (mechanism) & Responsible Party	Measurable Goal	Theme or Message	Target Audience	% of Target Audience Reached	Summary of Results	Effective (Yes or No)
Media Awareness Packet Butler County Storm Water District	Annually prepare at least one Press Release Packet and distribute to local media	Watershed Awareness & Water Quality	General Public	<p>Television: WLWT-TV Channel 5: 26 ads purchased, 456,900 total viewers 296, 30-sec. ads donated, 5.2 million viewers 7 web billboard ads over 2 months, 462,000 views Earth Day telethon – 1 hour of environmental questions, 59,400 viewers</p> <p>Radio: WVXU/WVGUC – 28 15-sec spots over 4 weeks promoting website – 65,400 listeners WKRC – 8 30-sec. ads over 4 weeks – 53,200 listeners Guest on Ron Wilson's "In the Garden Show" – 2 hour show on soil fertility and cover crops – 6,650 listeners Guest on Brian Thomas morning show "Ask the Expert" – spoke on Regional Storm Water Collaborative and water quality</p> <p>Website: www.savelocalwaters.org Total 2012 page views – 11,744 Avg. page views per quarter – 2,936 56 separate news stories posted on web site</p> <p>Social Media: Facebook Page likes – 194</p>	<p>The Regional Storm Water Collaborative utilizes mass media and shared resources in order to raise awareness concerning environmental quality issues in the Ohio River Valley. By leveraging joint resources, our alliance is capable of reaching regional audiences with a consistent message in the most economical and efficient manner possible. The Butler County Storm Water District, is an active founding member of the Regional Storm Water Collaborative..</p>	Yes



State of Ohio Environmental Protection Agency

SMALL MS4 ANNUAL REPORT FORM

				<p>Facebook daily annual impressions – 41,921 Twitter – 144 tweets; 73 followers</p>		
<p>Media Awareness Packet Butler County Storm Water District</p>	<p>Annually prepare at least one Press Release Packet and distribute to local media</p>	<p>Watershed Awareness . Hydromodification & Water Quality</p>	<p>General Public</p>	<p>Average daily traffic count for a single billboard was 11,206. Campaign utilized 28 billboards at various times during a six month period.</p>	<p>The Butler County Storm Water District conducts an annual outdoor billboard advertising campaign. The boards delivers the messages such as "Storm Drains are not Garbage Cans" and "Rain Gardens reduce runoff & improve water quality". The message prompts people to report pollution to the storm water hotline number. At a minimum, eight boards are placed throughout the county during a single showing. Billboards are also used to highlight public involvement activities such as the Clean Sweep of the Great Miami River and Great Miami River Days festival. From April – September 2012, 28 billboards were posted .</p>	<p>Yes</p>
<p>Education Program for Local Schools Butler Soil & Water Conservation District</p>	<p>Adopt and Distribute K-12 Water Curricula Program</p>	<p>Watershed Awareness & Water Quality</p>	<p>Students: grades K-12</p>	<p>88 classroom programs reached 6,578 students and 720 adults.</p>	<p>This year the Butler Soil and Water Conservation District conducted 88 education programs within NPDES Phase II affected areas in Butler County. The Butler Soil and Water Conservation District offers programs and resources to local schools/groups. Full day workshops and introductory programs for the following programs are available: Project WET (Water Education for Teachers), Project WILD Aquatics, stream walks, stream monitoring, and On the Trail</p>	<p>Yes</p>



State of Ohio Environmental Protection Agency

SMALL MS4 ANNUAL REPORT FORM

					<p>of Non-Point Pollution Sources:</p>	
<p>Education Program for Local Schools Butler County Department of Water and Sewer</p>	<p>Adopt and Distribute K-12 Water Curricula Program</p>	<p>Watershed Awareness & Water Quality</p>	<p>Students: grades K-12</p>	<p>485 presentations reached 13,493 students.</p>	<p>The Butler County Department of Water and Sewer provides a variety of educational programs to school districts within Butler County. During 2012, the environmental educator made 485 presentations relating to water quality, litter prevention, waste reduction, recycling, conservation, environmental stewardship and pollution reduction that reached over 13,493 students.</p>	<p>Yes</p>
<p>Education Workshop Butler Soil & Water Conservation District</p>	<p>Adopt and Distribute K-12 Water Curricula Program</p>	<p>Project WET</p>	<p>Elementary/ Grade Teachers: grades K-7</p>	<p>15 people</p>	<p>On February 11th, 2012, a Project WET Workshop was presented to fifteen (15) elementary teachers. All materials presented were aligned with State of Ohio standards for Science and Social Studies.</p>	<p>Yes</p>
<p>Storm Drain Labeling Butler Soil & Water Conservation District</p>	<p>Purchase and coordinate installation of 300 labels per year until all labels are marked.</p>	<p>Hazards of Illicit Discharge</p>	<p>Homeowners and General Public</p>	<p>Three separate labeling events were planned for the 2012 permit year. The three events resulted in the installation of four hundred and sixty six (466) storm drain labels on catch basins and the distribution of illicit discharge information to houses by community volunteers.</p>	<p>Storm drain labels are simple and effective best management practices to prevent non-point source pollution from entering waterways in our community and those downstream. The labels are intended to make urban and suburban homeowners think twice before dumping material down the storm sewers and into rivers, streams, and ponds in their</p>	<p>Yes</p>



SMALL MS4 ANNUAL REPORT FORM

State of Ohio Environmental Protection Agency

BONUS ACTIVITIES Butler County Storm Water District	N/A	SEE ATTACHMENT "C"	This list contains activities not specifically required by permit or listed as part of the District's Storm Water Management Plan.	neighborhoods.	
---	-----	--------------------	--	----------------	--

PUBLIC EDUCATION & OUTREACH

- Summarize activities you plan to undertake during the next reporting cycle.

BMP (mechanism) & Responsible Party	Measurable Goal	Theme or Message	Target Audience	% of Target Audience to be Reached	Summary of Planned Activities	Proposed Schedule
Media Awareness Butler County Storm Water District	Annually prepare at least one Press Release Packet and distribute to local media	Household Hazardous Waste	General Public	Dependent on reach of selected media.	Promote public education theme utilizing billboard advertising	Various months throughout the year.
Media Awareness Butler County Storm Water District	Annually prepare at least one Press Release Packet and distribute to local media	Various themes which may include, and are not limited to, water quality, litter prevention, waste reduction, recycling, conservation, environmental stewardship and pollution reduction	General Public	Dependent on reach of selected media.	As a member of the Regional Storm Water Collaborative, contract with various local mass media networks to provide billboard, radio and/or television spots as Public Service Announcements	Will vary based on number of participating municipalities and the type of media selected.
Education Program for Local Schools Butler Soil & Water Conservation District; Butler County Department of Water and Sewer	Provide K-12 Water Curricula Program	Various themes which may include, and are not limited to, water quality, litter prevention, waste reduction, recycling, conservation, environmental stewardship and pollution reduction	School Children K-12	Dependent on requests for programs	Provide a variety of educational programs to school districts within Butler County.	Provide programs as requested throughout the school year.



SMALL MS4 ANNUAL REPORT FORM

State of Ohio Environmental Protection Agency

Storm Drain Labeling Butler Soil & Water Conservation District	Purchase and coordinate installation of 300 labels per year until all labels are marked.	Hazards of Illicit Discharge	Homeowners and General Public	Dependent on number of labels installed and number of houses receiving illicit discharge information door hangers.	Utilize neighborhood volunteers to install storm drain labels and distribute information to residential properties on hazards of illicit discharge	Throughout the year as weather permits.
--	--	------------------------------	-------------------------------	--	--	---



SMALL MS4 ANNUAL REPORT FORM

State of Ohio Environmental Protection Agency

PUBLIC INVOLVEMENT/PARTICIPATION

BMP (Activity) & Responsible Party	Measurable Goal	Theme or Message	Target Audience	Estimate of People Participated	Summary of Results	Effective (Yes or No)
Public Meetings Butler County Storm Water District	Hold two public meetings and one citizen discussion panel per year until Program is implemented.	District Open House	General Public	Approx. 5,000 people. (Butler County Fair average attendance is around 100,000 people.)	From July 22 – July 28, 2012, the Butler County Storm Water District presented a week long open-house forum at the Butler County Fair to allow the public an opportunity review and discuss the Butler County Storm Water Management Plan and the Annual Report. Informational brochures were also distributed about Non-point Source Pollution and Illicit Discharges.	Yes
Public Meetings Butler County Storm Water District	Hold two public meetings and one citizen discussion panel per year until Program is implemented.	Butler County Storm Water District Quarterly Meetings	Butler County Storm Water District Co-permittees	103 People	A total of one hundred three (103) people attended the quarterly public meetings. Since December 2009, the District has foregone lengthy, formal annual meetings and adopt a new format of informal quarterly updates. This change is intended to make meetings more accessible to co-permittees and facilitate the distribution of District information in a timely fashion.	Yes
Butler County Stream Team Butler County Storm Water District	Facilitate and oversee one Stream Clean-Up and Monitoring Program each year.	Volunteers collect data and monitor stream health	General Public and Students	In 2012, the Stream Team analyzed 1,523 samples , an average of 127 samples per month. An average of twenty three (23) volunteers collected and analyzed the samples each month. Over the course of the year, one hundred forty nine (149) different volunteers participated in stream monitoring activities.	The Butler County Storm Water District teamed up with Miami University Institute for Environmental Science and the Butler Soil and Water Conservation District to promote and implement a monthly volunteer stream monitoring program to assess local stream quality. A protocol for the lab and field procedures was prepared and submitted to the Ohio EPA Credible Data Program. The Stream Team averaged 127 samples a month and 23 volunteers. Over the course of the year, one hundred forty nine (149) different volunteers have participated. There are 20 fixed	Yes



SMALL MS4 ANNUAL REPORT FORM

					<p>locations from watersheds throughout Butler County and the remainder of the samples comes from locations chosen by volunteers. When samples are returned to the lab, they are analyzed for six parameters: nitrates, phosphates, bacteria, conductivity, total dissolved solids, pH, and turbidity. For more information concerning the Butler County Stream Team, visit : www.butlercountystreamteam.org</p>	
<p>Stream Walks Butler Soil & Water Conservation District</p>	<p>Facilitate and oversee one Stream Clean-Up and Monitoring Program each year.</p>	<p>Water Quality, Stream Ecology, Watershed Awareness</p>	<p>School Children and Teachers</p>	<p>277 children and 55 adults</p>	<p>The Butler Soil and Water Conservation District conducted 4 challenging, yet entertaining, educational stream and/or wetland walks for 277 children and 55 adults. Topics included water quality (chemical, biological, physical attributes) stream ecology, stream attributes, and watershed mapping.</p>	<p>Yes</p>
<p>Clean Sweep of the Great Miami River Butler County Storm Water District</p>	<p>Facilitate and oversee one Stream Clean-Up and Monitoring Program each year.</p>	<p>Litter Prevention</p>	<p>General Public</p>	<p>311 participants in Butler County; 1,598 participants overall.</p>	<p>Over 1,598 volunteers participated watershed wide in the "Clean Sweep of the Great Miami River" – an effort to clean up the entire 170-mile river. On May 5th in the Butler County area, 311 participants collected 9.91 tons of litter and 3.97 tons of tires at sites along the Great Miami River.</p>	<p>Yes</p>
<p>Storm Water Hotline, Database and Response Program Butler County Storm Water District</p>	<p>Document Complaints Received and Follow up in a timely manner.</p>	<p>Illicit Discharge, Illegal Dumping; Drainage; Sanitary; HSTS; Erosion; Other</p>	<p>General Public</p>	<p>202 customer inquiries for the year 2012.</p>	<p>The Butler County Storm Water District created a database and response program to document citizen inquiries/complaints and accurately record contact information. The database and response program recorded over 202 customer inquiries for the year 2012. The database tracks information specific to the</p>	<p>Yes</p>



SMALL MS4 ANNUAL REPORT FORM

State of Ohio Environmental Protection Agency

					customers address, method of contact, nature of inquiry, and detail of inquiry/complaint resolution. Average response and resolution time is 4 days.	
BONUS ACTIVITIES	N/A	SEE ATTACHMENT "C"	This list contains activities not specifically required by permit or listed as part of the District's Storm Water Management Plan.			
Butler County Storm Water District						

PUBLIC INVOLVEMENT/PARTICIPATION

- Summarize activities you plan to undertake during the next reporting cycle.

BMP (Activity) & Responsible Party	Measurable Goal	Theme or Message	Target Audience	Estimate of People to Participate	Summary of Planned Activities	Proposed Schedule
Public Meetings Butler County Storm Water District	Hold two public meetings and one citizen discussion panel per year until Program is implemented.	NPDES phase II program information	General Public	As many as event will accommodate.	Utilize a variety of public meeting formats to engage the public such as open house, public hearings, annual meetings, etc.	Various times throughout the year.
Butler County Stream Team	Facilitate and oversee one Stream Clean-Up and Monitoring Program each year.	Volunteers collect data and monitor stream health	General Public and Students	Dependent on number of volunteers	Meet monthly with volunteer stream monitors to assess local stream quality.	Monthly
Butler County Storm Water District	Facilitate and oversee one Stream Clean-Up and Monitoring Program each year.	Litter Prevention	General Public	Dependent on number of volunteers	Coordinate clean-up of Great Miami River at multiple sites in Butler County.	Annual



State of Ohio Environmental Protection Agency

SMALL MS4 ANNUAL REPORT FORM

Storm Water Hotline, Database and Response Program	Document Complaints Received and Follow up in a timely manner.	Illicit Discharge, Illegal Dumping; Drainage; Sanitary; HSTS; Erosion; Other	General Public	Dependent on caller volume.	Track information specific to the customer's address, method of contact, nature of inquiry, and detail of inquiry/complaint resolution. Respond and resolve complaint in a timely manner.	Daily
Butler County Storm water District						



SMALL MS4 ANNUAL REPORT FORM

State of Ohio Environmental Protection Agency

ILLICIT DISCHARGE DETECTION & ELIMINATION (IDDE)

BMP & Responsible Party	Measurable Goal	Completed (Yes or No)	Cite Local Code(s) Being Used (If available, web link for code(s))	Summary of Results or Activities	Effective (Yes or No)
Ordinance or Other Regulatory Mechanism Butler County Storm Water District	Establish Illicit Discharge Ordinance for District; Implement and enforce.	Yes	Butler County Illicit Discharge Detection and Elimination Regulations (Resolution No. 09-11-1954)	On November 12, 2009, the Butler County Board of Commissioners signed and adopted the Illicit Discharge Detection and Elimination Regulations. The final draft is available on the District website: www.stormwaterdistrict.org	Yes
BMP & Responsible Party Storm Sewer System Map Butler County Storm Water District	Measurable Goal Update Storm Sewer Map Annually.	Completed (Yes or No) Yes	Summary of Activities or Updates	Using "As-Built" data originating from the 1970's and forward, 100% of known sewer systems have been mapped in the Phase II affected areas within the county. Each year as new development occurs throughout the District, the sewer map will be reviewed and updated.	Effective (Yes or No) Yes
BMP & Responsible Party HSTS Mapping and List Butler County Storm Water District	Measurable Goal Update HSTS Map Annually	Completed (Yes or No) Yes	Summary of Activities or Updates	The Butler County Storm Water District researched archived HSTS records held by the Butler County Health Department. The information can be viewed graphically with the use of the county GIS system. A map has been made identifying existing HSTS within the District. Updates are made on an annual basis. All new applications for HSTS will be added to that data.	Effective (Yes or No) Yes
BMP & Responsible Party IDDE Plan Butler County Storm Water District	Measurable Goal Develop and implement IDDE plan	Completed (Yes or No) Yes	Summary of Activities or Updates	By creating and adopting an illicit discharge regulation, the Storm Water District has established the methods and standards for best management practices (BMPs) for controlling the introduction of pollutants into the municipal separate storm sewer system. The regulation establishes the authority and means by which the District will carry out inspection, monitoring and enforcement procedures necessary to ensure compliance. The Butler County Storm Water District created a database and response program to document and accurately record contact information regarding spill reports, illicit discharges, illegal dumping, and citizen complaints. The information obtained from the hotline and database can be mapped with the use of the county GIS system. Problem areas can be viewed graphically based on type, location, and frequency. This database is updated on a regular basis to help identify and resolve problem areas.	Effective (Yes or No) Yes
BMP & Responsible Party	Measurable Goal	Completed (Yes or No)	# of Outfalls Screened # of Dry-Weather Flows Identified # Of Illicit Discharges: Identified* Eliminated	Effective (Yes or No)	



SMALL MS4 ANNUAL REPORT FORM

State of Ohio Environmental Protection Agency

Dry-Weather Screening of Outfalls Total # of Outfalls 6,093	Inspect 400 mapped outfalls and sample when necessary	Yes	39	14	0	n/a	Yes
Butler County Storm Water District			Thirty nine outfalls were identified as part of a pilot project to screen the eastern half of the county. The full scale project, to be implemented in 2013, is anticipated to identify and screen thousands of outfalls.				
BONUS ACTIVITIES Butler County Storm Water District	N/A	SEE ATTACHMENT "C"	This list contains activities not specifically required by permit or listed as part of the District's Storm Water Management Plan.				

*Include an attachment which provides schedules for elimination of illicit connections that have been identified but have yet to be eliminated.

ILLICIT DISCHARGE DETECTION & ELIMINATION (IDDE)

- Summarize activities you plan to undertake for the next reporting cycle.

BMP & Responsible Party	Measurable Goal	Summary of Planned Activities	Proposed Schedule
Ordinance or Other Regulatory Mechanism Butler County Storm Water District	Continue to implement and enforce IDDE regulation.	Review IDDE regulation and update as needed.	Annually
Storm Sewer System Map Butler County Storm Water District	Update Storm Sewer Map Annually.	Each year as new development occurs throughout the District the sewer map will be reviewed and updated.	Annually
HSTS Mapping and List Butler County Storm Water District	Update HSTS Map Annually	Updates are made on an annual basis. All new applications for HSTS will be added to that data.	Annually
IDDE Plan Butler County Storm Water District	Continue to implement IDDE plan	Review and update plan as needed.	Annually
Dry-Weather Screening of Outfalls Butler County Storm Water District	Inspect 400 mapped outfalls and sample when	The Butler County Storm Water District (District)	Permit Year 2012



SMALL MS4 ANNUAL REPORT FORM

State of Ohio Environmental Protection Agency

Butler County Storm Water District	necessary	commissioned a third outfall mapping & screening project. Consultant will utilize the existing geodatabase, incorporate storm sewer feature information, identify new outfalls, dry weather screen outfalls, and sampling & testing of non-storm water flows as necessary.	
------------------------------------	-----------	--	--



SMALL MS4 ANNUAL REPORT FORM

CONSTRUCTION SITE RUNOFF CONTROL

BMP & Responsible Party	Measurable Goal	Completed (Yes or No)	Cite Local Code(s) Being Used (if available, web link for code(s))	Summary of Results or Activities	Effective (Yes or No)
Ordinance or Other Regulatory Mechanism Butler County Storm Water District	Compliance with NPDES Construction General Permit requirements.	Yes	Butler County Subdivision Regulations	The Butler County Subdivision regulations were revised in 2014. The revisions were adopted on January 12, 2012. The revisions covered a number of non-point source pollution topics including construction site storm water discharges and groundwater pollution potential.	Yes
BMP & Responsible Party Sediment and Erosion Control Requirements Butler County Storm Water District	Measurable Goal	Completed (Yes or No)	Standards Being Used	Summary of Results or Activities Erosion and Sediment Control Regulations: Article VII – Butler County Subdivision Regulations Erosion and Sediment Control Regulations: Article VII were adopted as part of the Butler County Subdivision regulations on March 12, 2007. The changes were effective during the Summer of 2007.	Effective (Yes or No)
BMP & Responsible Party Complaint Process Butler County Storm Water District	Measurable Goal	Completed (Yes or No)	Complaints Received: 0 Followed-Up On: 0	Summary of Results or Activities Responded to and resolved all complaints.	Effective (Yes or No)
BMP & Responsible Party Site Plan Review Procedures Butler County Storm Water District	Measurable Goal	Completed (Yes or No)	# of Applicable Sites: 233 # of Plans Reviewed: 233 Site Inspections Performed: 233 Avg. Frequency: 233	Summary of Results or Activities Made plan comments to ensure that all sites were in compliance with regulations.	Effective (Yes or No)
BMP & Responsible Party	Measurable Goal	Completed (Yes or No)	# of Applicable Sites: # Performed: Avg. Frequency:	Summary of Results or Activities	Effective (Yes or No)



SMALL MS4 ANNUAL REPORT FORM

State of Ohio Environmental Protection Agency

Site Inspection Procedures Butler County Storm Water District	Inspect all applicable sites for compliance	Yes	233	1546	Every two weeks	Inspected active sites for compliance with Erosion and Sediment control Regulations	Yes
BMP & Responsible Party	Measurable Goal	Completed (Yes or No)	Violations			Summary of Results or Activities	Effective (Yes or No)
Butler County Storm Water District	Ensure compliance with regulations.	Yes	# of Violation Letters 24	# of Enforcement Actions 0		Violations resolved. Enforcement actions unnecessary.	Yes

*Include an attachment which identifies applicable sites within your jurisdiction for this reporting period.

CONSTRUCTION SITE RUNOFF CONTROL

- Summarize activities you plan to undertake during the next reporting cycle.

BMP & Responsible Party	Measurable Goal	Summary of Planned Activities	Proposed Schedule
Ordinance or Other Regulatory Mechanism Butler County Storm Water District	Compliance with NPDES Construction General Permit requirements.	Review Federal and State rule changes and revise county regulations.	As needed.
Sediment and Erosion Control Requirements Butler County Storm Water District	Compliance with NPDES Construction General Permit requirements.	Review Federal and State rule changes and revise county regulations.	As needed.
Complaint Process Butler County Storm Water District	Respond to all complaints.	Respond to all complaints and ensure compliance with all regulations.	As needed.
Butler County Storm Water District	Review all site plans for compliance	Continue to make plan comments to ensure that	As needed.



State of Ohio Environmental Protection Agency

SMALL MS4 ANNUAL REPORT FORM

Butler County Storm Water District		all sites were in compliance with regulations.	
Site Inspection Procedures	Inspect all applicable sites for compliance	Inspect active sites for compliance with Erosion and Sediment control Regulations	As needed.
Butler County Storm Water District			
Enforcement Procedures	Ensure compliance with regulations.	Enforce compliance on all active sites.	As needed.
Butler County Storm Water District			



SMALL MS4 ANNUAL REPORT FORM

State of Ohio Environmental Protection Agency

POST-CONSTRUCTION STORM WATER MANAGEMENT IN NEW DEVELOPMENT AND REDEVELOPMENT

BMP & Responsible Party	Measurable Goal	Completed (Yes or No)	Cite Local Code(s) Being Used (if available, web link for code(s))	Summary of Results or Activities	Effective (Yes or No)
Ordinance or Other Regulatory Mechanism Butler County Storm Water District and Co-Permittees	Comply with post-construction requirements for NPDES phase II permit. (ie. Provide for open space, minimization of impervious area, protection of natural resources, etc.)	Yes	Butler County Subdivision Regulations Butler County Flood Damage Prevention Regulations Butler County Zoning Code Township Zoning Code (Fairfield, Liberty, St. Clair, Wayne, West Chester) City of Trenton Subdivision Regulations and Zoning	All documents have been updated to include post construction requirements. Documents are reviewed as needed to ensure compliance.	Yes
BMP & Responsible Party Post-Construction Requirements Butler County Storm Water District and Co-Permittees	Measurable Goal Comply with post-construction requirements for NPDES phase II permit.	Completed (Yes or No) Yes	Structural and/or Non-Structural Standards Being Used Ohio EPA Construction General Permit requirements ODNR Rainwater and Land Development Manual ODOT Location and Design Manual Also, see above document list.	Summary of Results or Activities All documents have been updated to include post construction requirements. Documents are reviewed as needed to ensure compliance.	Effective (Yes or No) Yes
BMP & Responsible Party Site Plan Review Procedures Butler County Storm Water District	Measurable Goal Review all sites required to obtain Ohio EPA Construction General Permit	Completed (Yes or No) Yes	# of Applicable Sites Requiring Post-Const. BMPs 20 # of Plans Reviewed 20	Summary of Results or Activities Made plan comments to ensure that all sites were in compliance with regulations.	Effective (Yes or No) Yes
BMP & Responsible Party Site Inspection Procedures Butler County Storm Water District	Measurable Goal Inspect all sites that require post construction BMPs (ie. greater than 5 acres)	Completed (Yes or No) Yes	Site Inspections Performed # Performed 138 Avg. Frequency Every two weeks	Summary of Results or Activities Inspected active sites for compliance with Erosion and Sediment Control Regulations.	Effective (Yes or No) Yes
BMP & Responsible Party Enforcement Procedures Butler County Storm Water District	Measurable Goal Ensure compliance with E&SC regulations.	Completed (Yes or No) Yes	Violations # of Violation Letters 0 # of Enforcement Actions 0	Summary of Results or Activities Enforced compliance on all active sites.	Effective (Yes or No) Yes



SMALL MS4 ANNUAL REPORT FORM

State of Ohio Environmental Protection Agency

POST-CONSTRUCTION STORM WATER MANAGEMENT IN NEW DEVELOPMENT AND REDEVELOPMENT

BMP & Responsible Party	Measurable Goal	Completed (Yes or No)	Cite Local Code(s) Being Used (If available, web link for code(s))	Summary of Results or Activities	Effective (Yes or No)	
Ordinance or Other Regulatory Mechanism Butler County Storm Water District and Co-Permittees	Comply with post-construction requirements for NPDES phase II permit. (ie. Provide for open space, minimization of impervious area, protection of natural resources, etc.)	Yes	Butler County Subdivision Regulations Butler County Flood Damage Prevention Regulations Butler County Zoning Code Township Zoning Code (Fairfield, Liberty, St. Clair, Wayne, West Chester) City of Trenton Subdivision Regulations and Zoning	All documents have been updated to include post construction requirements. Documents are reviewed as needed to ensure compliance.	Yes	
BMP & Responsible Party Post-Construction Requirements Butler County Storm Water District and Co-Permittees	Measurable Goal Comply with post-construction requirements for NPDES phase II permit.	Completed (Yes or No) Yes	Structural and/or Non-Structural Standards Being Used Ohio EPA Construction General Permit requirements ODNR Rainwater and Land Development Manual ODOT Location and Design Manual Also, see above document list.	Summary of Results or Activities All documents have been updated to include post construction requirements. Documents are reviewed as needed to ensure compliance.	Effective (Yes or No) Yes	
BMP & Responsible Party Site Plan Review Procedures Butler County Storm Water District	Measurable Goal Review all sites required to obtain Ohio EPA Construction General Permit	Completed (Yes or No) Yes	# of Applicable Sites Requiring Post-Const. BMPs 20	# of Plans Reviewed 20	Summary of Results or Activities Made plan comments to ensure that all sites were in compliance with regulations.	Effective (Yes or No) Yes
BMP & Responsible Party Site Inspection Procedures Butler County Storm Water District	Measurable Goal Inspect all sites that require post construction BMPs (ie. greater than 5 acres)	Completed (Yes or No) Yes	Site Inspections Performed # Performed 138	Avg. Frequency Every two weeks	Summary of Results or Activities Inspected active sites for compliance with Erosion and Sediment Control Regulations.	Effective (Yes or No) Yes
BMP & Responsible Party Enforcement Procedures Butler County Storm Water District	Measurable Goal Ensure compliance with E&SC regulations.	Completed (Yes or No) Yes	Violations # of Violation Letters 0	# of Enforcement Actions 0	Summary of Results or Activities Enforced compliance on all active sites.	Effective (Yes or No) Yes



SMALL MS4 ANNUAL REPORT FORM

State of Ohio Environmental Protection Agency

Site Inspection Procedures	Inspect all sites that require post construction BMPs (ie. greater than 5 acres)	Inspect active sites for compliance with Erosion and Sediment Control Regulations.	Annually
Butler County Storm Water District			
Enforcement Procedures	Ensure compliance with E&SC regulations.	Enforce compliance on all active sites.	Annually
Butler County Storm Water District			
Long-Term O&M Plans/Agreements	Ensure that facilities are either publicly owned and operated or a Home Owners Association or a Property Owners Association is established.	The Butler County Engineers Office will continue to coordinate and plan inspections of all publicly owned and operated drainage structures within the District on an annual basis. Facilities and structures have maintenance performed as necessary based upon inspection results. A report is issued annually to the County commissioners on all inspection and maintenance activities.	Annually
Butler County Storm Water District			



SMALL MS4 ANNUAL REPORT FORM

State of Ohio Environmental Protection Agency

POLLUTION PREVENTION/GOOD HOUSEKEEPING FOR MUNICIPAL OPERATIONS

BMP & Responsible Party	Measurable Goal	Completed (Yes or No)	Topic(s)	Targeted Audience	# of Employees Attended	Summary of Activity	Effective (Yes or No)
Employee Training Program	Establish plan for training and train 25% per year	Yes	Varied by facility. Topics include: Spill Identification and Emergency response; SPCC; Construction Site Runoff Control; Snow and Ice Control	Municipal Employees	114 Employees*	Reviewed PRGHP and training video..	Yes
Butler County Storm Water District							

List of Municipal Facilities Subject to Program

1. Butler County Engineer's Office
2. Butler County Regional Airport
3. City of Trenton
4. Fairfield Township (Morris Road)
5. Fairfield Township (Tylersville Road)
6. Hanover Township
7. Lenton Township
8. Liberty Township
9. Madison Township
10. Metroparks of Butler County
11. Ross Township
12. St. Clair Township
13. Village of New Miami
14. Village of Seven Mile
15. Wayne Township
16. West Chester Township

O&M Procedures Developed for Facilities (Yes or No)

Yes

of Facility Inspections Performed

9*

Frequencies of Such Inspections

Annual

Summarize Maintenance Activities and Schedules

MS4 Maintenance

Maintenance activities are performed on an as-needed basis.

Summarize Activities Performed

The Butler County Engineers Office coordinates and plans inspections of all drainage structures within the District on an annual basis. Facilities and structures have maintenance performed as necessary based upon inspection results. A report is issued annually to the County commissioners on all inspection and maintenance activities.

Procedures Developed (Yes or No)

Yes

Document Amounts of Wastes Properly Disposed

2,375* gallons of automotive fluids recycled (i.e. Transmission fluid, gear oil, engine oil)

Covered (Yes or No)

Yes

Summarize Measures Taken to Minimize Usage

Salt usage minimized through the use of Standard Operating Procedures (SOPs) for snow and ice control. Further reductions are achieved with the use of the automated brine maker and distribution tanks for pretreatment. Also investigated and experimented with beet juice as salt alternative.

Road Salt

Tons Used

3,908*



SMALL MS4 ANNUAL REPORT FORM

State of Ohio Environmental Protection Agency

		Procedures Developed (Yes or No)	Gallons Used	Summarize Measures Taken to Minimize Usage
Pesticide & Herbicide Usage	Yes		280.03 gallons of liquid concentrate plus 10.44 lbs. granular*	Butler County Engineers Office has developed and implemented Standard Operating Procedures (SOPs) for pesticide and herbicide application. All employees that participate in pesticide and herbicide application are licensed by the Ohio Department of Agriculture.
	Procedures Developed (Yes or No)		Pounds Used	Summarize Measures Taken to Minimize Usage
Fertilizer Usage	N/A		N/A	N/A
Street Sweeping	Procedures Developed (Yes or No)			Document Amount of Material Collected and Properly Disposed
	Yes			Street sweeping as needed for county bridges and curb & gutter roads. Procedure in place for dewatering and disposal of collected waste. Currently procedures do not include a method to calculate and record the amount of material collected.
Flood Management Projects	Summarize any New or Existing Flood Management Projects that were Assessed for Impacts on Water Quality			
	N/A			
BONUS ACTIVITIES		N/A	SEE ATTACHMENT "C"	This list contains activities that not specifically required by permit or listed as part of the District's Storm Water Management Plan.
Butler County Storm Water District				

* Numbers reflect totals as reported by 9 of 16 facilities.

POLLUTION PREVENTION/GOOD HOUSEKEEPING FOR MUNICIPAL OPERATIONS

- Summarize activities you plan to undertake for the next reporting cycle.

BMP & Responsible Party	Measurable Goal	Summary of Planned Activities	Proposed Schedule
Employee Training Program Butler County Storm Water District	Train 25% of municipal employees subject to program.	Continue to implement training component of facility PP&GHP.	Annually
List of Facilities Subject to Program Butler County Storm Water District	List all facilities subject to Program.	Review existing list of facilities subject to program and make changes as needed.	Annually
MS4 Maintenance	Inspect drainage structures within the District on	Coordinate and plan inspections of drainage structures within the District on an annual basis.	Annually



SMALL MS4 ANNUAL REPORT FORM

State of Ohio Environmental Protection Agency

Butler County Storm Water District	an annual basis.	Perform maintenance as necessary based upon inspection results. Issue report annually to the County commissioners on all inspection and maintenance activities.	
Disposal of Wastes	Gallons of oil properly recycled/recovered	Recycle oil.	Continuous.
Butler County Storm Water District			
Road Salt	Minimize salt usage	Minimize salt usage through the use of Snow and Ice control SOPs, use of brine pretreatment system and investigate salt alternatives.	Annually
Butler County Storm Water District			
Pesticide & Herbicide Usage	Minimize pesticide and herbicide usage	Continue to implement implemented Standard Operating Procedures (SOPs) for pesticide and herbicide application. Ensure employees obtain and maintain licensed by the Ohio Department of Agriculture license.	Annually
Butler County Storm Water District			
Fertilizer Usage	N/A	N/A	N/A
Butler County Storm Water District			
Street Sweeping	Properly dispose of and Document Amount of Material Collected	Develop and implement a method to calculate and record the amount of material collected.	Complete by the end of the permit cycle- 2014.
Butler County Storm Water District			
Flood Management Projects	N/A	N/A	N/A
Butler County Storm Water District			



SMALL MS4 ANNUAL REPORT FORM

State of Ohio Environmental Protection Agency

PROPOSED CHANGES TO YOUR SWMP (IF ANY)

- Summarize any proposed changes to your SWMP, including changes to any BMPs or any identified measurable goals that apply to the program elements. If you fail to satisfy measurable goals for the reporting year, please explain why.

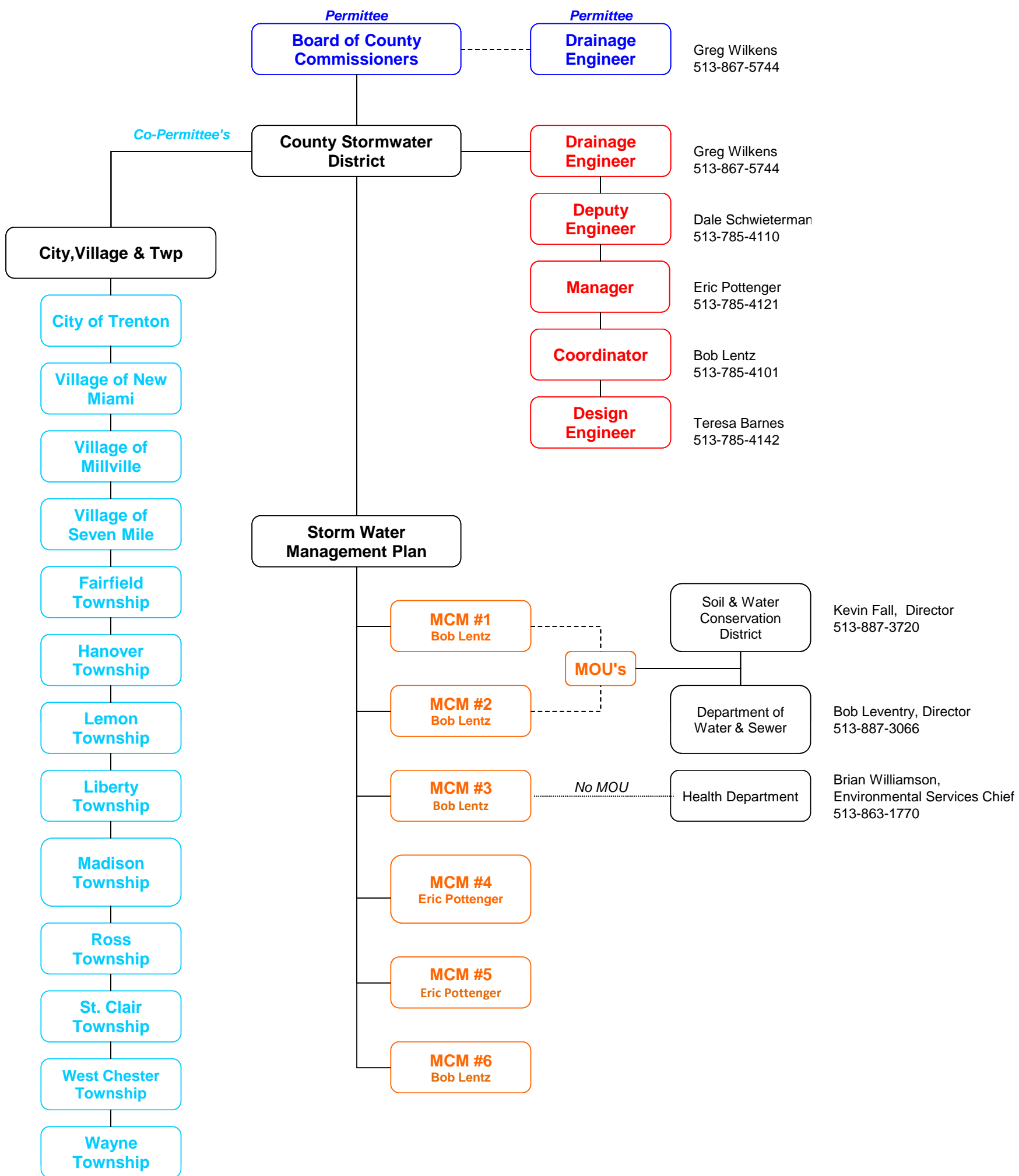
VARIANCES GRANTED (IF ANY)

- Identify and summarize any variances granted under your storm water program.



Organizational Chart

NPDES Phase II



Permittee

Co-Permittee

Storm Water Staff

Minimum Control Measure

Applicable Sites For Construction Site Runoff Control

Total Permit Count from 01/01/2012 to 12/31/2012**Opened Erosion Sediment Control Permits**

<u>Permit #</u>	<u>Township</u>	<u>Category</u>	<u>Parcel #</u>	<u>Date Opened</u>
BSW-LR12-00004	LIBERTY	Residential	D2020197000040	01/03/2012
BSW-LR12-00009	FAIRFIELD	Residential	A0300149000011	01/06/2012
BSW-LR12-00015	LIBERTY	Residential	D2020294000003	01/11/2012
BSW-LR12-00016	LIBERTY	Residential	D2020259000028	01/11/2012
BSW-LR12-00017	LIBERTY	Residential	D2020292000032	01/11/2012
BSW-LR12-00023	FAIRFIELD	Residential	A0300149000010	01/18/2012
BSW-LC12-00026	WEST CHESTER	Commercial	M5620442000020	01/20/2012
BSW-LR12-00028	LIBERTY	Residential	D2020209000011	01/20/2012
BSW-LC12-00030	WEST CHESTER	Commercial	M5610019000005	01/23/2012
BSW-LR12-00032	LIBERTY	Residential	D2020291000051	01/23/2012
BSW-LR12-00033	LIBERTY	Residential	D2020299000055	01/23/2012
BSW-LR12-00035	LIBERTY	Residential	D2020239000078	01/24/2012
BSW-LC12-00048	WEST CHESTER	Commercial	M5620465000016	01/27/2012
BSW-LC12-00049	WEST CHESTER	Commercial	M5620465000017	01/27/2012
BSW-LC12-00050	WEST CHESTER	Commercial	M5620465000018	01/27/2012
BSW-LC12-00051	WEST CHESTER	Commercial	M5620465000016	01/27/2012
BSW-LC12-00052	LIBERTY	Commercial	D2010008000029	01/30/2012
BSW-LR12-00053	LIBERTY	Residential	D2020301000006	01/30/2012

Total Permit Count from 01/01/2012 to 12/31/2012

<u>Permit #</u>	<u>Township</u>	<u>Category</u>	<u>Parcel #</u>	<u>Date Opened</u>
BSW-LR12-00058	FAIRFIELD	Residential	A0300158000042	02/03/2012
BSW-LR12-00059	LIBERTY	Residential	D2020292000016	02/03/2012
BSW-LR12-00065	WEST CHESTER	Residential	D2020295000015	02/09/2012
BSW-LR12-00069	LIBERTY	Residential	D2020209000015	02/14/2012
BSW-LC12-00075	WEST CHESTER	Commercial	M5610004000082	02/16/2012
BSW-LR12-00076	WEST CHESTER	Residential	M5610004000082	02/16/2012
BSW-LR12-00077	WEST CHESTER	Residential	M5610004000082	02/16/2012
BSW-LR12-00085	LIBERTY	Residential	D2020278000050	02/22/2012
BSW-LR12-00086	LIBERTY	Residential	D2020239000058	02/22/2012
BSW-LR12-00113	HANOVER	Residential	B1010033000050	02/29/2012
BSW-LR12-00114	FAIRFIELD	Residential	A0300169000018	02/29/2012
BSW-LR12-00115	FAIRFIELD	Residential	A0300164000015	02/29/2012
BSW-LR12-00116	FAIRFIELD	Residential	A0300166000059	02/29/2012
BSW-LR12-00117	LIBERTY	Residential	D2020291000079	02/29/2012
BSW-LR12-00118	FAIRFIELD	Residential	A0300166000044	02/29/2012
BSW-LC12-00119	WEST CHESTER	Commercial	M5610014000035	03/01/2012
BSW-LR12-00120	OXFORD	Residential	H3610039000066	03/02/2012
BSW-LR12-00121	FAIRFIELD	Residential	A0300166000009	03/02/2012
BSW-LR12-00127	ROSS	Residential	K4620105000011	03/06/2012

Total Permit Count from 01/01/2012 to 12/31/2012

<u>Permit #</u>	<u>Township</u>	<u>Category</u>	<u>Parcel #</u>	<u>Date Opened</u>
BSW-LR12-00128	LIBERTY	Residential	D2020291000034	03/06/2012
BSW-LR12-00130	LIBERTY	Residential	D2020295000031	03/08/2012
BSW-LR12-00131	LIBERTY	Residential	D2020300000057	03/08/2012
BSW-LR12-00132	ROSS	Residential	K4620107000032	03/08/2012
BSW-LR12-00133	LIBERTY	Residential	D2020281000027	03/08/2012
BSW-LR12-00134	LIBERTY	Residential	D2020292000024	03/08/2012
BSW-LR12-00135	LIBERTY	Residential	D2020293000011	03/08/2012
BSW-LR12-00142	LIBERTY	Residential	D2020278000033	03/12/2012
BSW-LR12-00143	LIBERTY	Residential	D2020282000080	03/12/2012
BSW-LR12-00144	LIBERTY	Residential	D2020291000016	03/12/2012
BSW-LR12-00147	MADISON	Residential		03/14/2012
BSW-LR12-00149	MADISON	Residential		03/15/2012
BSW-LR12-00150	MADISON	Residential		03/15/2012
BSW-LR12-00151	MADISON	Residential		03/15/2012
BSW-LR12-00157	LIBERTY	Residential	D2020300000021	03/21/2012
BSW-LR12-00164	MADISON	Residential		03/22/2012
BSW-LR12-00166	LIBERTY	Residential	D2020293000016	03/23/2012
BSW-LR12-00171	LIBERTY	Residential	D2020208000025	03/28/2012
BSW-LR12-00172	WEST CHESTER	Residential	M5620468000012	03/28/2012

Total Permit Count from 01/01/2012 to 12/31/2012

<u>Permit #</u>	<u>Township</u>	<u>Category</u>	<u>Parcel #</u>	<u>Date Opened</u>
BSW-LR12-00173	LIBERTY	Residential	D2020278000061	03/28/2012
BSW-LR12-00188	MORGAN	Residential	G3210010000004	03/30/2012
BSW-LR12-00189	LIBERTY	Residential	D2020296000002	03/30/2012
BSW-LC12-00191	MILFORD	Commercial	F2610024000018	04/03/2012
BSW-LR12-00200	LIBERTY	Residential	D2020293000015	04/09/2012
BSW-LR12-00201	LIBERTY	Residential	D2020294000016	04/09/2012
BSW-LR12-00202	LIBERTY	Residential	D2020294000007	04/09/2012
BSW-LR12-00203	FAIRFIELD	Residential	A0300166000089	04/09/2012
BSW-LR12-00206	LIBERTY	Residential	D2020278000063	04/12/2012
BSW-LR12-00207	ROSS	Residential	K4620020000066	04/12/2012
BSW-LR12-00208	LIBERTY	Residential	D2020300000019	04/12/2012
BSW-LC12-00215	LIBERTY	Commercial	D2010013000097	04/16/2012
BSW-LR12-00210	LIBERTY	Residential	D2020291000075	04/16/2012
BSW-LR12-00212	LIBERTY	Residential	D2020303000036	04/16/2012
BSW-LR12-00213	FAIRFIELD	Residential	A0300169000011	04/16/2012
BSW-LR12-00214	LIBERTY	Residential	D2020281000028	04/16/2012
BSW-LR12-00218	LIBERTY	Residential	D2010022000077	04/17/2012
BSW-LC12-00238	WEST CHESTER	Commercial	M5620002000142	04/23/2012
BSW-LC12-00240	WEST CHESTER	Commercial	M5620465000011	04/24/2012

Total Permit Count from 01/01/2012 to 12/31/2012

<u>Permit #</u>	<u>Township</u>	<u>Category</u>	<u>Parcel #</u>	<u>Date Opened</u>
BSW-LC12-00241	WEST CHESTER	Commercial	M5620465000011	04/24/2012
BSW-LC12-00242	WEST CHESTER	Commercial	M5620465000011	04/24/2012
BSW-LC12-00243	WEST CHESTER	Commercial	M5620465000011	04/24/2012
BSW-LC12-00244	WEST CHESTER	Commercial	M5620465000011	04/24/2012
BSW-LC12-00253	WEST CHESTER	Commercial	M5610032000113	04/25/2012
BSW-LR12-00245	LIBERTY	Residential	D2020301000012	04/25/2012
BSW-LR12-00246	WEST CHESTER	Residential	M5620457000035	04/25/2012
BSW-LR12-00247	LIBERTY	Residential	D2020291000052	04/25/2012
BSW-LR12-00254	FAIRFIELD	Residential	A0300166000088	04/27/2012
BSW-LR12-00256	FAIRFIELD	Residential	A0300166000079	04/27/2012
BSW-LR12-00257	ROSS	Residential	K4620103000011	04/27/2012
BSW-LR12-00259	LIBERTY	Residential	D2020278000019	04/27/2012
BSW-LC12-00266	WEST CHESTER	Commercial	M5820376000002	04/30/2012
BSW-LC12-00268	ST CLAIR	Commercial	L5300006000194	04/30/2012
BSW-LR12-00282	LIBERTY	Residential	D2020283000028	05/07/2012
BSW-LR12-00283	WEST CHESTER	Residential	M5620242000012	05/07/2012
BSW-LR12-00284	WEST CHESTER	Residential	M5620381000132	05/07/2012
BSW-LR12-00285	ROSS	Residential	K4620107000027	05/07/2012
BSW-LR12-00286	WEST CHESTER	Residential	M5620468000013	05/07/2012

Total Permit Count from 01/01/2012 to 12/31/2012

<u>Permit #</u>	<u>Township</u>	<u>Category</u>	<u>Parcel #</u>	<u>Date Opened</u>
BSW-LR12-00291	MADISON	Residential	R8000022000073	05/08/2012
BSW-LR12-00293	LIBERTY	Residential	D2020299000049	05/09/2012
BSW-LR12-00294	LIBERTY	Residential	D2020263000030	05/09/2012
BSW-LR12-00295	LIBERTY	Residential	D2020263000029	05/09/2012
BSW-LR12-00296	FAIRFIELD	Residential	A0300164000012	05/09/2012
BSW-LR12-00297	FAIRFIELD	Residential	A0300162000026	05/09/2012
BSW-LR12-00311	MADISON	Residential	R8000071000011	05/11/2012
BSW-LR12-00312	WEST CHESTER	Residential	M5620467000025	05/11/2012
BSW-LR12-00314	WEST CHESTER	Residential	M5610004000082	05/11/2012
BSW-LR12-00315	WEST CHESTER	Residential	M5610004000082	05/11/2012
BSW-LR12-00316	WEST CHESTER	Residential	M5610004000082	05/11/2012
BSW-LR12-00317	LIBERTY	Residential	D2020299000053	05/11/2012
BSW-LR12-00318	WEST CHESTER	Residential	M5610005000009	05/11/2012
BSW-LR12-00319	ROSS	Residential	K4620107000031	05/11/2012
BSW-LR12-00322	MADISON	Residential	R8000012000063	05/15/2012
BSW-LR12-00336	LIBERTY	Residential	D2020298000024	05/24/2012
BSW-LR12-00337	LIBERTY	Residential	D2020301000016	05/24/2012
BSW-LR12-00338	ROSS	Residential	K4620103000022	05/24/2012
BSW-LR12-00339	LIBERTY	Residential	D2020278000028	05/24/2012

Total Permit Count from 01/01/2012 to 12/31/2012

<u>Permit #</u>	<u>Township</u>	<u>Category</u>	<u>Parcel #</u>	<u>Date Opened</u>
BSW-LR12-00340	FAIRFIELD	Residential	A0300149000040	05/24/2012
BSW-LR12-00341	LIBERTY	Residential	D2020285000023	05/24/2012
BSW-LR12-00342	LIBERTY	Residential	D2020299000056	05/24/2012
BSW-LR12-00343	LIBERTY	Residential	D2020281000056	05/24/2012
BSW-LR12-00355	WEST CHESTER	Residential	M5620462000020	05/31/2012
BSW-LR12-00356	FAIRFIELD	Residential	A0300158000046	05/31/2012
BSW-LR12-00357	LIBERTY	Residential	D2020278000053	05/31/2012
BSW-LR12-00358	LIBERTY	Residential	D2020291000002	05/31/2012
BSW-LR12-00359	LIBERTY	Residential	D2020281000055	05/31/2012
BSW-LR12-00369	LIBERTY	Residential	D2020283000031	06/06/2012
BSW-LR12-00370	LIBERTY	Residential	D2020200000032	06/06/2012
BSW-LR12-00380	LIBERTY	Residential	D2020301000048	06/12/2012
BSW-LR12-00381	LIBERTY	Residential	D2020301000046	06/12/2012
BSW-LC12-00386	MILFORD	Commercial	F2610007000076	06/13/2012
BSW-LR12-00383	FAIRFIELD	Residential	A0300158000025	06/13/2012
BSW-LR12-00384	WEST CHESTER	Residential	M5620457000034	06/13/2012
BSW-LR12-00389	LIBERTY	Residential	D2020040000016	06/15/2012
BSW-LR12-00404	LIBERTY	Residential	D2010010000021	06/22/2012
BSW-LR12-00405	LIBERTY	Residential	D2020299000063	06/22/2012

Total Permit Count from 01/01/2012 to 12/31/2012

<u>Permit #</u>	<u>Township</u>	<u>Category</u>	<u>Parcel #</u>	<u>Date Opened</u>
BSW-LR12-00406	LIBERTY	Residential	D2020299000067	06/22/2012
BSW-LR12-00407	WAYNE	Residential	N5920029000063	06/22/2012
BSW-LR12-00408	LIBERTY	Residential	D2020303000016	06/22/2012
BSW-LR12-00415	MADISON	Residential	R8000022000055	06/25/2012
BSW-LR12-00421	FAIRFIELD	Residential	A0300147000111	06/27/2012
BSW-LR12-00422	ROSS	Residential	K4620094000039	06/27/2012
BSW-LR12-00423	LIBERTY	Residential	D2020234000045	06/27/2012
BSW-LR12-00424	LIBERTY	Residential	D2020202000025	06/27/2012
BSW-LR12-00425	LIBERTY	Residential	D2020299000060	06/27/2012
BSW-LR12-00426	WEST CHESTER	Residential	M5620467000033	06/27/2012
BSW-LR12-00427	WEST CHESTER	Residential	M5620438000018	06/27/2012
BSW-LR12-00428	LIBERTY	Residential	D2020299000069	06/27/2012
BSW-LR12-00437	MADISON	Residential	R8000071000056	07/03/2012
BSW-LR12-00438	MADISON	Residential	R8000012000070	07/03/2012
BSW-LR12-00439	LIBERTY	Residential	D2020269000040	07/03/2012
BSW-LR12-00440	FAIRFIELD	Residential	A0300166000085	07/03/2012
BSW-LR12-00441	FAIRFIELD	Residential	A0300166000071	07/03/2012
BSW-LR12-00449	MADISON	Residential	R8000071000052	07/09/2012
BSW-LR12-00450	MADISON	Residential	R8000012000062	07/09/2012

Total Permit Count from 01/01/2012 to 12/31/2012

<u>Permit #</u>	<u>Township</u>	<u>Category</u>	<u>Parcel #</u>	<u>Date Opened</u>
BSW-LC12-00464	WEST CHESTER	Commercial	M5620469000006	07/12/2012
BSW-LR12-00466	LIBERTY	Residential	D2020291000004	07/16/2012
BSW-LR12-00467	LIBERTY	Residential	D2040061000031	07/16/2012
BSW-LR12-00468	LIBERTY	Residential	D2020281000046	07/16/2012
BSW-LR12-00469	LIBERTY	Residential	D2020282000045	07/16/2012
BSW-LR12-00470	WEST CHESTER	Residential	M5620139000080	07/16/2012
BSW-LR12-00471	FAIRFIELD	Residential	A0300032000040	07/16/2012
BSW-LR12-00472	LIBERTY	Residential	D2020303000028	07/16/2012
BSW-LR12-00473	LIBERTY	Residential	D2020299000058	07/16/2012
BSW-LR12-00474	LIBERTY	Residential	D2020278000059	07/16/2012
BSW-LR12-00475	FAIRFIELD	Residential	A0300159000029	07/16/2012
BSW-LR12-00476	LIBERTY	Residential	D2020298000051	07/16/2012
BSW-LR12-00495	WEST CHESTER	Residential	M5620095000060	07/24/2012
BSW-LR12-00499	WEST CHESTER	Residential	M5620211000088	07/26/2012
BSW-LR12-00500	FAIRFIELD	Residential	A0300166000057	07/26/2012
BSW-LR12-00501	LIBERTY	Residential	D2020301000025	07/26/2012
BSW-LR12-00502	FAIRFIELD	Residential	A0300166000065	07/26/2012
BSW-LR12-00503	LIBERTY	Residential	D2020295000010	07/26/2012
BSW-LR12-00507	FAIRFIELD	Residential	A0300169000023	07/27/2012

Total Permit Count from 01/01/2012 to 12/31/2012

<u>Permit #</u>	<u>Township</u>	<u>Category</u>	<u>Parcel #</u>	<u>Date Opened</u>
BSW-LR12-00514	FAIRFIELD	Residential	A0300169000004	07/30/2012
BSW-LR12-00515	LIBERTY	Residential	D2020299000064	07/30/2012
BSW-LR12-00516	LIBERTY	Residential	D2020293000013	07/30/2012
BSW-LR12-00517	LIBERTY	Residential	D2020301000007	07/31/2012
BSW-LR12-00518	FAIRFIELD	Residential	A0300166000060	07/31/2012
BSW-LR12-00522	WEST CHESTER	Residential	M5620439000068	08/01/2012
BSW-LR12-00523	WEST CHESTER	Residential	M5620381000133	08/01/2012
BSW-LR12-00524	WEST CHESTER	Residential	M5620400000096	08/01/2012
BSW-LR12-00525	LIBERTY	Residential	D2020301000044	08/01/2012
BSW-LR12-00526	LIBERTY	Residential	D2020301000049	08/01/2012
BSW-LR12-00528	ROSS	Residential	K4620106000008	08/01/2012
BSW-LR12-00547	WEST CHESTER	Residential	M5620211000061	08/13/2012
BSW-LR12-00549	LIBERTY	Residential	D2020282000095	08/13/2012
BSW-LR12-00552	LIBERTY	Residential	D2020295000026	08/14/2012
BSW-LR12-00553	LIBERTY	Residential	D2020282000052	08/14/2012
BSW-LR12-00554	LIBERTY	Residential	D2020303000009	08/14/2012
BSW-LR12-00555	WEST CHESTER	Residential	M5620429000076	08/14/2012
BSW-LR12-00556	LIBERTY	Residential	D2020303000007	08/14/2012
BSW-LR12-00557	FAIRFIELD	Residential	A0300145000096	08/14/2012

Total Permit Count from 01/01/2012 to 12/31/2012

<u>Permit #</u>	<u>Township</u>	<u>Category</u>	<u>Parcel #</u>	<u>Date Opened</u>
BSW-LR12-00558	LIBERTY	Residential	D2020303000012	08/14/2012
BSW-LR12-00559	LIBERTY	Residential	D2020292000027	08/14/2012
BSW-LR12-00562	ROSS	Residential	K4620103000008	08/16/2012
BSW-LC12-00569	WEST CHESTER	Commercial	M5820044000013	08/20/2012
BSW-LC12-00571	WEST CHESTER	Commercial	D2010017000125	08/21/2012
BSW-LR12-00570	OXFORD	Residential	H3620067000014	08/21/2012
BSW-LR12-00577	WEST CHESTER	Residential	M5620287000060	08/22/2012
BSW-LR12-00582	LIBERTY	Residential	D2020278000016	08/23/2012
BSW-LR12-00583	WEST CHESTER	Residential	M5620461000024	08/23/2012
BSW-LR12-00584	LIBERTY	Residential	D2020274000038	08/23/2012
BSW-LR12-00585	MADISON	Residential	R8000071000044	08/23/2012
BSW-LR12-00601	WEST CHESTER	Residential	M5610004000082	08/29/2012
BSW-LR12-00602	LIBERTY	Residential	D2020299000068	08/29/2012
BSW-LR12-00603	LIBERTY	Residential	D2020282000074	08/29/2012
BSW-LC12-00604	WEST CHESTER	Commercial	M5620465000037	08/30/2012
BSW-LR12-00617	MADISON	Residential	R8000022000095	09/06/2012
BSW-LR12-00627	LIBERTY	Residential	D2020303000042	09/07/2012
BSW-LR12-00628	LIBERTY	Residential	D2020301000061	09/07/2012
BSW-LR12-00629	LIBERTY	Residential	D2020301000061	09/07/2012

Total Permit Count from 01/01/2012 to 12/31/2012

<u>Permit #</u>	<u>Township</u>	<u>Category</u>	<u>Parcel #</u>	<u>Date Opened</u>
BSW-LR12-00634	LIBERTY	Residential	D2020281000062	09/10/2012
BSW-LR12-00635	LIBERTY	Residential	D2020269000038	09/10/2012
BSW-LC12-00653	FAIRFIELD	Commercial	A0300025000075	09/13/2012
BSW-LR12-00644	LIBERTY	Residential	D2020295000014	09/13/2012
BSW-LR12-00645	LIBERTY	Residential	D2020283000033	09/13/2012
BSW-LR12-00646	FAIRFIELD	Residential	A0300158000048	09/13/2012
BSW-LR12-00647	LIBERTY	Residential	D2020054000038	09/13/2012
BSW-LR12-00648	ROSS	Residential	K4620064000324	09/13/2012
BSW-LR12-00649	ROSS	Residential	K4620102000026	09/13/2012
BSW-LR12-00650	ROSS	Residential	K4620102000061	09/13/2012
BSW-LR12-00651	LIBERTY	Residential	D2020303000046	09/13/2012
BSW-LR12-00652	LIBERTY	Residential	D2020303000061	09/13/2012
BSW-LR12-00660	WEST CHESTER	Residential	M5620462000013	09/18/2012
BSW-LR12-00671	FAIRFIELD	Residential	A0300032000044	09/27/2012
BSW-LR12-00672	LIBERTY	Residential	D2020292000017	09/27/2012
BSW-LR12-00673	ROSS	Residential	K4620102000059	09/27/2012
BSW-LR12-00674	LIBERTY	Residential	D2020300000004	09/27/2012
BSW-LR12-00675	WEST CHESTER	Residential	M5620468000014	09/27/2012
BSW-LR12-00676	MADISON	Residential	R8000005000118	09/27/2012

Total Permit Count from 01/01/2012 to 12/31/2012

<u>Permit #</u>	<u>Township</u>	<u>Category</u>	<u>Parcel #</u>	<u>Date Opened</u>
BSW-LR12-00689	MADISON	Residential	E2220049000038	10/05/2012
BSW-LR12-00690	LIBERTY	Residential	D2020054000035	10/05/2012
BSW-LR12-00691	WEST CHESTER	Residential	M5610004000082	10/05/2012
BSW-LR12-00692	WEST CHESTER	Residential	M5610004000082	10/05/2012
BSW-LR12-00693	WEST CHESTER	Residential	M5610004000082	10/05/2012
BSW-LR12-00694	LIBERTY	Residential	D2020303000051	10/05/2012
BSW-LR12-00695	LIBERTY	Residential	D2020278000057	10/05/2012
BSW-LR12-00696	WEST CHESTER	Residential	M5620381000130	10/05/2012
BSW-LR12-00697	ROSS	Residential	K4620107000028	10/05/2012
BSW-LR12-00698	WEST CHESTER	Residential	M5620434000113	10/05/2012
BSW-LR12-00711	MADISON	Residential	R8000012000059	10/12/2012
BSW-LR12-00712	LIBERTY	Residential	D2020281000090	10/12/2012
BSW-LR12-00713	LIBERTY	Residential	D2020054000040	10/12/2012
BSW-LR12-00714	LIBERTY	Residential	D2020281000093	10/15/2012
BSW-LR12-00715	LIBERTY	Residential	D2020255000016	10/15/2012
BSW-LR12-00716	LIBERTY	Residential	D2020239000027	10/15/2012
BSW-LR12-00717	MADISON	Residential	E2210030000023	10/15/2012
BSW-LR12-00718	MADISON	Residential	R8000028000079	10/16/2012
BSW-LR12-00722	ROSS	Residential	B1020137000009	10/22/2012

Total Permit Count from 01/01/2012 to 12/31/2012

<u>Permit #</u>	<u>Township</u>	<u>Category</u>	<u>Parcel #</u>	<u>Date Opened</u>
BSW-LR12-00723	FAIRFIELD	Residential	A0300165000001	10/22/2012
BSW-LR12-00724	MADISON	Residential	R8000022000021	10/22/2012
BSW-LR12-00725	WEST CHESTER	Residential	M5610004000082	10/23/2012
BSW-LC12-00728	LIBERTY	Commercial	D2010017000033	10/29/2012
BSW-LR12-00740	LIBERTY	Residential	D2020083000015	11/02/2012
BSW-LR12-00745	LIBERTY	Residential	D2020301000020	11/06/2012
BSW-LR12-00746	LIBERTY	Residential	D2020208000026	11/06/2012
BSW-LR12-00747	ROSS	Residential	K4620103000020	11/06/2012
BSW-LR12-00748	LIBERTY	Residential	D2020282000034	11/06/2012
BSW-LR12-00749	LIBERTY	Residential	D2020292000012	11/06/2012
BSW-LR12-00750	LIBERTY	Residential	D2020282000096	11/06/2012
BSW-LR12-00751	LIBERTY	Residential	D2020122000084	11/06/2012
BSW-LR12-00760	WEST CHESTER	Residential	M5620471000002	11/13/2012
BSW-LR12-00763	FAIRFIELD	Residential	A0300166000084	11/14/2012
BSW-LR12-00764	FAIRFIELD	Residential	A0300032000036	11/14/2012
BSW-LR12-00765	WEST CHESTER	Residential	M5620381000142	11/14/2012
BSW-LR12-00766	LIBERTY	Residential	D2020298000066	11/14/2012
BSW-LR12-00781	LIBERTY	Residential	D2020054000046	11/20/2012
BSW-LR12-00782	LIBERTY	Residential	D2020083000023	11/20/2012

Total Permit Count from 01/01/2012 to 12/31/2012

<u>Permit #</u>	<u>Township</u>	<u>Category</u>	<u>Parcel #</u>	<u>Date Opened</u>
BSW-LR12-00783	LIBERTY	Residential	D2020304000009	11/20/2012
BSW-LR12-00784	FAIRFIELD	Residential	A0300166000037	11/20/2012
BSW-LR12-00785	LIBERTY	Residential	D2020304000004	11/20/2012
BSW-LR12-00786	LIBERTY	Residential	D2020077000022	11/20/2012
BSW-LR12-00787	LIBERTY	Residential	D2020304000010	11/20/2012
BSW-LR12-00788	WEST CHESTER	Residential	M5620088000035	11/20/2012
BSW-LR12-00789	MADISON	Residential	R8000022000115	11/20/2012
BSW-LR12-00794	LIBERTY	Residential	D2020301000033	11/29/2012
BSW-LR12-00800	LIBERTY	Residential	D2020291000065	11/30/2012
BSW-LR12-00805	WEST CHESTER	Residential	D2020054000028	12/04/2012
BSW-LR12-00807	WEST CHESTER	Residential	M5620472000001	12/05/2012
BSW-LR12-00808	LIBERTY	Residential	D2020282000099	12/05/2012
BSW-LC12-00812	MADISON	Commercial	E2220086000025	12/07/2012
BSW-LR12-00813	LIBERTY	Residential	D2010020000033	12/07/2012
BSW-LR12-00815	LIBERTY	Residential	D2020282000098	12/11/2012
BSW-LR12-00817	LIBERTY	Residential	D2020298000009	12/11/2012
BSW-LR12-00820	MADISON	Residential	R8000028000082	12/12/2012
BSW-LR12-00821	LIBERTY	Residential	D2020278000056	12/12/2012
BSW-LR12-00822	WEST CHESTER	Residential	M5620051000093	12/12/2012

Total Permit Count from 01/01/2012 to 12/31/2012

<u>Permit #</u>	<u>Township</u>	<u>Category</u>	<u>Parcel #</u>	<u>Date Opened</u>
BSW-LR12-00823	LIBERTY	Residential	D2020301000050	12/12/2012
BSW-LR12-00824	LIBERTY	Residential	D2020301000051	12/12/2012
BSW-LC12-00829	WEST CHESTER	Commercial	M5610002000056	12/14/2012
BSW-LR12-00830	WEST CHESTER	Residential	M5620461000020	12/14/2012
BSW-LC12-00845	WEST CHESTER	Commercial	M5620458000006	12/26/2012
BSW-LR12-00847	WEST CHESTER	Residential	M5620457000018	12/27/2012
BSW-LR12-00848	WEST CHESTER	Residential	M5620121000011	12/28/2012
BSW-LR12-00854	WEST CHESTER	Residential	M5620434000104	12/31/2012
BSW-LR12-00855	FAIRFIELD	Residential	A0300032000043	12/31/2012
BSW-LR12-00856	LIBERTY	Residential	D2020282000105	12/31/2012
BSW-LR12-00857	LIBERTY	Residential	D2020282000043	12/31/2012
BSW-LR12-00858	FAIRFIELD	Residential	A0300162000035	12/31/2012
BSW-LR12-00859	FAIRFIELD	Residential	A0300032000042	12/31/2012
BSW-LR12-00860	LIBERTY	Residential	D2020054000041	12/31/2012
BSW-LR12-00861	LIBERTY	Residential	D2020281000064	12/31/2012

Total Permit Count: 299

Attachment “C”
Butler County Storm Water District Bonus Activities

B1

Activity: Watershed Signage

Date: 01/01/2012 - 12/31/2012

The Butler County Storm Water District is involved with watershed awareness and education throughout Butler County. This is accomplished in part by coordinating stream crossing sign installation with public awareness and education programs. An additional 60 signs at 30 stream crossing locations were installed in 2012.

B2

Activity: Great Miami River Days Festival

Date: 01/01/2012 - 12/31/2012

The Butler County Storm Water District is a major sponsor and a participating member of the Great Miami River Days Festival Committee. Great Miami River Days features historical and recreational events while conservation and recreation organizations participate with hands-on displays to help citizens understand the value of the river – both as a natural resource and an economic-development tool. On average **30,000** people attend event each year. Since October of 2003 a member of the Butler County Storm Water District has participated in all monthly meetings. Other groups participating in the Festival Planning committee include Friends of the Great Miami; Miami Conservancy District; St. Clair Township, Butler County; Butler SWCD, Butler County Storm Water District; Butler County Water and Sewer; Hamilton to New Baltimore Groundwater Consortium; Land Conservancy of Hamilton County. The event is used to promote watershed education and recreational activities associated with the Great Miami River. To find out more about River Days, visit <http://www.greatmiamiriverdays.org/>

B3

Activity: Mill Creek Watershed Council

Date: 01/01/2012 - 12/31/2012

A representative from the Butler County Storm Water District served on the Board of Trustees and participated in quarterly meetings of the Mill Creek Watershed Council. The purpose of the Mill Creek Watershed Council is to maintain and enhance the asset-value of the Mill Creek by providing resources to the communities and the region to realize lasting benefits. The Mill Creek Watershed Council is a publicly funded, non-profit corporation representing all 37 political jurisdictions in the Mill Creek watershed. The Council acts as a forum for making watershed-based decisions by convening and coordinating meetings and projects related to the improvement of the Mill Creek. Through these forums, the Council invites public input on watershed-related issues. The full council meets quarterly at locations throughout the watershed and creates a quarterly newsletter, Voice of the Mill Creek, that is mailed to approximately 1400 addresses throughout the watershed. Please visit the following website for additional information: <http://www.millcreekwatershed.org/home.html>

B4

Activity: Water Management Association of Ohio & the Ohio Stormwater Association

Date: 01/01/2012 - 12/31/2012

A representative from the Butler County Storm Water District serves on the Board of Directors and attended Ohio Stormwater Association Committee Meetings. The Ohio Stormwater Association is a group of public and private citizens dedicated to advancing the management of stormwater and related natural resources through education, leadership, watershed-based coordination and technical assistance in Ohio. The Ohio Stormwater Association is a not-for-profit, non-political organization. The Ohio Stormwater Association is organized formally as the stormwater division of the Water Management Association of Ohio which maintains a 501(c)4 status. The Ohio Stormwater Association provides educational and networking opportunities for people focused on reducing the negative impacts of stormwater runoff. The Ohio Stormwater Association provides quarterly educational meetings on topics of interest to our members and helps to sponsor the Ohio Stormwater Conference being held each spring. This year the conference was held in Toledo, Ohio. More than 400 people attended five concurrent tracks over the course of two days.

B5**Activity: Miami Valley Storm Water Awareness Team****Date: 01/01/2012 – 12/31/2012**

The Miami Valley Storm Water Awareness Team (SWAT) is a partnership of educational program providers that serve the regulated communities. The group's mission is to education through effective collaborations non-rural residents of the Miami Valley about how to reduce runoff pollution. Individual members of the SWAT want to strengthen connections among related programs and the regulated jurisdictions. A representative from the Butler County Storm Water District attended the SWAT meetings and participated in the creation and implementation of a Storm Water Communication Plan for public outreach and education activities.

B6**Activity: Classroom Presentation – Butler County Children's Water Festival****Date: 10/12/2012**

The Butler County Water Festival was held October 12, 2012 at Miami University Hamilton. The "Hands on Day of Discovery" was attended by 1,434 fourth, fifth and sixth graders, and over 100 presenters and volunteers from across Butler County. A representative from the Butler County Storm Water District presented to 5 classrooms of children on the topics of impervious surfaces, non-point source pollution, and storm water runoff. The Butler County Storm Water District also supported the festival financially.

B7**Activity: Public Presentations – Miami Valley Storm Water Awareness Team – MS4 Workshop****Date: 3/16/2012**

The Miami Valley Stormwater Awareness Team's (SWAT) mission is to assist regulated agencies in educating their urban residents about reducing stormwater runoff pollution. Educators from Southwestern Ohio County agencies collaborate to provide storm water education resources and materials to regulated jurisdictions. On March 16th, 2012, approximately 80 people attended a half day MS4 workshop at Cox Arboretum. Information presented was focused on the theme of hydromodification. A representative from The Butler County Storm Water District was among the speakers at this years workshop. Information was presented on BMP incentives and the creation of a credits program. Visit www.mvstormwater.com for more information about the Miami Valley SWAT.

B8**Activity: Public Presentations - Earth Day (Hamilton, Ohio)****Date: 04/20/12**

More than 20 state, regional and local environmental organizations, including the Butler County Storm Water District, were at the event to encourage recycling, resource conservation and awareness of local environmental issues. An estimated 1,000 people stopped by to improve their environmental awareness.

B9**Activity: Public Presentations - EarthFest (Oxford, Ohio)****Date: 04/20/12**

The Butler Soil and Water Conservation District were at the event to encourage recycling, resource conservation and awareness of local environmental issues. Live music, informational displays and activities for children presented by numerous Miami and community groups were featured. An estimated 125 people stopped by to improve their environmental awareness.

B10**Activity: Public Presentations – Rain Barrel Workshop****Date: 05/19/12**

The Butler Soil and Water Conservation District held a rain barrel workshop for twenty people. Participants were educated about ways to reduce runoff and improve water quality with the use of rain barrels, rain gardens and pervious pavement. The workshop provided materials for each person to make a rain barrel and take it home for use in their own yards.

B11**Activity: Public Presentations – Upper Mill Creek Watershed Symposium****Date: 10/04/2012**

On October 4th, the Mill Creek Watershed Council hosted the Upper Mill Creek Watershed Symposium. Over 40 representatives from the community were there to voice their ideas about watershed issues and the prioritization and implementation of improvement projects in the Upper Mill Creek Watershed. Participants discussed successful past projects and used maps to designate priority areas for future projects and current areas of concern. The information gathered at this event will be used to update the Upper Mill Creek Watershed Action Plan in 2013. The Butler County Storm Water District assisted with the planning of the symposium and several members of the District participated in the event.

B12

Activity: Public Presentations – Greater Hamilton Safety Council

Date: 10/18/2012

The Greater Hamilton Safety Council is a non-profit organization dedicated to safety education and accident prevention! A representative from the Butler County Storm Water District attended the October meeting for the Safety Council Home Division. In keeping with the District's 2012 theme of Hydromodification, the topics presented and discussed focused on residential practices to improve water quality. (i.e. rain gardens, rain barrels, pervious pavers, proper selection and use of fertilizer)

B13

Activity: Public Safety Event - Local Emergency Planning Committee (LEPC) Tabletop Exercise

Date: 10/22/2012

Facilitated by the Butler County Emergency Management Agency, over sixty local businesses and response agency representatives participated in a mock disaster event involving a gas explosion at a fuel storage facility in Monroe, Ohio. Tabletop exercises are discussion-based sessions where team members meet in a classroom setting to discuss their roles during an emergency and their responses to a particular emergency situation. A facilitator guides participants through a discussion of one or more scenarios. The purpose of the exercise was to provide participants an opportunity to evaluate current response concepts, plans and capabilities for an emergency incident within the county. The exercise focused on critical decisions, notification, and the integration of response agencies involved in this emergency event.

B14

Activity: Debris Management Plan – Butler County Emergency Management Agency

Date: 01/01/2012 - 12/31/2012

The Butler County Storm Water District participated in the creation of a county wide Debris Management Plan. Special attention was given to selecting sites that would minimize environmental impacts and prevent the degradation of surface water and ground water quality. The purpose of the debris management plan is to facilitate and coordinate the management of debris following a disaster in order to mitigate against any potential threat to the lives, health, safety, and welfare of the impacted citizens, expedite recovery efforts in the impacted area, and address any threat of significant damage to improved public or private property. The plan provides for a management structure with redundancy built in so areas of the county affected by an emergency can potentially rely on management staff from unaffected parts of the county.

B15

Activity: Public Presentations – Ohio Stormwater Association –Education Meeting

Date: 10/25/2012

The Butler County Storm Water District helped coordinate and financially supported the October OSWA Education Meeting about Stream Restoration, Grant Funding, and Maintenance. Thirty-six people were in attendance.

B16

Activity: Watershed Inventory – Miami University's Institute for Environment and Sustainability

Date: 08/01/2012 - 12/31/2012

The Butler County Storm Water District and the Butler Soil and Water Conservation District advised the the university project team in the selection and development of a Public Service Project. The project team decided to compile non-time sensitive elements of a watershed action plan and conduct an inventory of Four Mile Creek Watershed (FMCW) in accordance with the Ohio Environmental Protection Agency's (Ohio EPA) "A Guide to Developing Local Watershed Action Plans in Ohio." The Ohio EPA

guide outlines the categories of information that are most relevant in developing a comprehensive understanding of a watershed. These categories include natural features and habitats, water quality, human use and influence, and the effects of local point and nonpoint source pollutants within the FMCW. In addition to gathering this information, the team used a geographic information system (GIS) to create 26 maps that provide visual depictions of the watershed characteristics. The inventory is scheduled to be completed and a final document presented by May of 2013.

B17

Activity: Storm Water Hotline – Regional Storm Water Collaborative

Date: 01/01/2012 – 12/31/2012

The Butler County Storm Water District has partnered with the Regional Storm Water Collaborative to create a centralized storm water hotline number (513-946-3999) for Butler, Hamilton and Warren Counties and the newest collaborative member, Northern Kentucky. The Storm Water Hotline provides prompt service to residents in the tri-state region. The automated phone service directs the caller to the appropriate jurisdiction and enables citizens to call 24-hours a day, seven days a week to report any storm water concerns. The hotline number was publicized through the use billboard advertisements. For more information on the Regional Storm Water Collaborative and the non-point source pollution advertising campaign, please visit <http://www.savelocalwaters.org>

B18

Activity: Website Database and Mapping - Butler County Stream Team

Date: 7/24/2012

The Butler County Stream Team, a public volunteer stream monitoring group, unveiled a new website that is capable of displaying the location of all sampling sites and all associated data collected from 2006 – present. A Google Maps function has been integrated into the website to display the location of each individual sampling site. The site will allow the data to be searched by specific time period, individual site ID, municipality, watershed, and specific analyte. The user can generate graphs and reports specific to their interest. Photos depicting the physical conditions of each site can be included as well. The project was designed, funded and managed by the Butler County Storm Water District.

B19

Activity: Website and Content Management System – Miami Valley Stormwater Awareness Team

Date: 09/03/2012

The Miami Valley Storm Water Awareness Team (MVSAT), a collaboration of education program providers and MS4s in the Great Miami River Watershed, unveiled a new website. The purpose and function of this site will be similar to the USEPA NPS Toolbox. The site will serve as a clearinghouse for public education and outreach materials developed by members of the MVSAT. The website, and all its contents, will be made available for use by local municipalities and the general public. The project was designed, funded and managed by the Butler County Storm Water District.

B20

Activity: Illicit Discharge Brochure

Date: 10/12/2012

In an effort to inform the general public of hazards associated with illicit discharges and improper disposal of waste, the Butler County Storm Water District has distributed "Discover Storm Water" and "Watershed Protection" Project WET activity guides to 1434 children at the Butler County Water Festival.

B21

Activity: Local restoration and habitat improvement projects

Date: 01/01/2012 - 12/31/2012

The Mill Creek Confluence Wetlands Creation Project is a collaboration between MCWCC, Butler County Water and Sewer, Metropolitan Sewer District of Greater Cincinnati, and the City of Sharonville; the Project received a \$1.7 million Ohio Water Pollution Control Loan Fund through the Water Resource Restoration Sponsor Program (WRRSP) in late 2007. This project will bring the confluence of the Mill Creek (main stem) and East Fork into attainment with Warm Water Habitat Aquatic Life Use standards.

The Mill Creek Confluence Restoration Project: The project is a collaboration between MCWCC, Butler County Water and Sewer, Metropolitan Sewer District of Greater Cincinnati, and the City of Sharonville;

the Project received a \$1.7 million Ohio Water Pollution Control Loan Fund through the Water Resource Restoration Sponsor Program (WRRSP) in late 2007. This project, will bring the confluence of the Mill Creek (main stem) and East Fork into attainment with Warm Water Habitat Aquatic Life Use standards. <http://www.oki.org/elements/DOC/Environment/WaterQuality/MillCreekHeadwatersProject.doc>

B22

Activity: Five Star Restoration Grant - Wetland Extended Detention Basin Project

Date: 01/01/2012 - 12/31/2012

Project partners continue to monitor an existing detention basin which was restored to a riparian wetland, principally to provide habitat and treat upland runoff before entering the Upper Mill Creek. The monitoring program was enacted by the partners to evaluate the efficiency of the wetland in its assimilation of pollutants following storm events. Serving as a natural method to treat non-point source runoff, the project also provides a local example of the type of palustrine environment that once existed in the Mill Creek Watershed before urban and suburban land uses dominated the landscape.

Project partners include the Butler SWCD, Butler County Stormwater District, Beckett Ridge HOA, Mill Creek Watershed Council, Ohio Department of Natural Resources, and Miami (OH) University's Institute of Environmental Sciences (IES)

B23

Activity: Rain Garden Installation at Voice of America Park

Date: 01/01/2009 - Present

Installation of the rain garden began in November of 2008. The selection and placement of plants was completed by the end of April 2009. The rain garden is located in a high traffic area directly in front of the "Boat House" facility. The display includes educational signage and is a great example of a residential application for rain gardens. The site continues to be inspected and maintained throughout the year as necessary.

B24

Activity: Monitor BMP's – Butler County Engineers Office

Date: 01/01/2012 - 12/31/2012

Several BMPs for the Butler County Engineer's Office were designed and installed at the property located at 1921 Fairgrove Avenue in Hamilton, Ohio. The facility improvements include a bioretention area, two oil & grit separators, and a water quality pond. The design of the bioretention area allows for the collection and treatment of storm water runoff from existing paved areas. In addition to providing pollutant removal, the bioretention facility adds aesthetic appeal to a currently bare area. The best management practices are inspected and maintained throughout the year as necessary.

B25

Activity: Watershed Monitoring Network - Pilot Study-Four Mile Creek

Date: 01/01/2009 – Present

The Butler County Storm Water District (BCSWD) recognizes that watershed monitoring data is fundamentally necessary to gain an understanding of the water quantity, water quality and nutrient budgets of Butler County watersheds. This project will assist BCSWD in managing water resources to meet multiple objectives within the County. Those objectives include:

- prediction of frequency and severity of floods
- establishing quantity and quality of water for aquatic life and recreation
- managing water use
- developing watershed policies, procedures, and action plans for land use and development

A monitoring network is the "backbone" for facilitating good decision-making toward comprehensive water resource management. BCSWD ultimately intends to collect countywide information to develop guidelines for future activities within its watersheds. This work will create building blocks to drive guidelines for future development within BCSWD watersheds. A pilot watershed monitoring project with Four Mile Creek will be invaluable for projecting BCSWD (and stakeholder) staffing, financial, and other resource needs required to extend monitoring from watershed to watershed. The pilot project will facilitate development of standard operating procedures and processes needed to improve, streamline, and ultimately replicate the processes into each additional watershed to be monitored.

B26**Activity: P.R.I.D.E. Program Activity Description: Litter Collection and Clean-up****Date: 01/01/2012 - 12/31/2012**

The Butler County Sheriff's Roadside Collection litter Program is called PRIDE. The acronym stands for "Providing Responsibilities for Inmates through Duties for the Environment". Led by the litter crew supervisor, inmates from the Resolutions medium security prison collect litter along public rights-of-ways and in parks and, sometimes, assist in the removal of waste from illegal dumpsites.

- PRIDE Crew "common litter" collected in 2012 (in pounds): 16,759
- PRIDE Crew hours worked in 2012: 1,274 hours
- PRIDE Crew miles traveled in 2012: 409 miles

B27**Activity: Computer Recycling Event****Date: 04/01/2012 - 09/30/2012**

Computer Recycling events are sponsored twice a month by Butler County's Solid Waste Management District. The 2012 events were held at the Butler County Engineers Office (1921 Fairgrove Ave.) resulted in the collection of 133 tons of electronics and computer equipment and 2,367 participants.

B28**Activity: Household Hazardous Waste Program****Date: 06/01/2012 - 11/30/2012**

Household Hazardous Waste Recycling Events are held weekly from June to September and are sponsored by Butler County's Solid Waste Management District. The 2012 events resulted in 149.37 tons of household hazardous waste collected for safe processing, disposal, or recycling. Total number of participants was 3,811.

B29**Activity: Curbside Freon Appliance Collection Program****Date: 04/01/2012 - 11/30/2012**

Curbside freon appliance collection is sponsored by Butler County's Solid Waste Management District. The 2012 program resulted in the collection of 50.96 tons of freon containing appliances from 672 participating households.

B30**Activity: Cleanup Event - Liz Claiborn Wetland****Date: April 2012**

Butler Soil and Water Conservation District led a group of 15 volunteers from Contech Engineered Solutions and the local community to clear several acres of wetland of litter/debris and invasive species. The cleanup site was the Liz Claiborn wetland at S.R. 747 and Union Centre Blvd.

B31**Activity: Tire Collection at Ross High School****Date: 11/06/2012**

Tire collection is sponsored by Butler County's Solid Waste Management District. The November event held at the Ross Township High School resulted in the collection of 154.2 tons of tires and 296 people participated.

B32**Activity: Spring Clean Up Day - Fairfield Township****Date: April 28, 2012**

In Spring of 2012 the township held the annual Fairfield Township Clean-up Day, a volunteer led effort that allowed residents to drop off their household hazardous waste, tires, and debris at dumpsters at four area township locations. Several businesses stepped up to help with the effort contributing dumpsters and the use of their locations. 200 Volunteers cleaned up 25 miles of township roadway. Contact Fairfield Township at 887-4400 for collection totals.

B33**Activity: Webcasts Series – Watershed & Stormwater Management****Dates: 02/29/2012; 04/18/2012; 06/20/2012; 09/19/2012; 10/23/2012; 12/12/2012**

In an effort to provide educational opportunities about stormwater and watershed management issues, the Butler County Storm Water District hosted a variety of webcast seminars produced by the Center for Watershed Protection. The topics covered included: Urban stormwater design and retrofitting, stream restoration, sediment erosion control, BMP customization for specific pollutants. Thirty-one (31) people took advantage of this opportunity for training and open discussion of storm water management.