



NPDES Small MS4 General Permit (OHQ000002) Annual Reporting Form

Instructions for completing this form:

- OHQ000002 requires that this form be used when submitting annual reports. You may request approval to use your own reporting format.
- Annual Reports are due annually on or before April 1st.
- Complete the form and sign and date the certification statement below.
- If more space is needed than is provided, identify within the provided space that Attachment A, B, C, etc. has been attached.
- If an item of the form is not applicable for your program (such as street sweeping), fill in N/A in the space provided.
- Don't include attachments such as brochures, newspaper clips, sign-in sheets, etc. related to your program with this form. You only need to summarize these within this report. These records must be filed and will be needed during program audits.
- When complete, submit this Annual Report form to the following address:
Ohio Environmental Protection Agency
Division of Surface Water
Storm Water Program – Small MS4
P.O. Box 1049
Columbus, Ohio 43216-1049

Small MS4 Annual Report for Year: 2013		
Ohio EPA Facility Permit Number: 1GQ00051*BG		
Name of MS4: Butler County Storm Water District		
Primary Contact: Gregory J. Wilkens, P.E., P.S.		Title: Storm Water Engineer
Mailing Address: 1921 Fairgrove Avenue		
City: Hamilton	Zip Code: Ohio	County: Butler
Telephone Number: 513-867-5744		Email Address: wilkensg@bceo.org

Include or attach a Table of Organization. Indicate who (name and contact information) is responsible for overall management and implementation of your program, and if different, each minimum control measure of your program. Identify how development and implementation across multiple positions, agencies and departments occur. Also, identify any Memorandum of Understandings (MOUs) or other such agreements that exist.

- Attachment "A" - Organizational Chart
- Attachment "B" - Applicable Sites for Construction Site Runoff Control
- Attachment "C" - Bonus Activities

I certify under penalty of law that this document and all attachments were prepared under my direction or supervision in accordance with a system designed to assure that qualified personnel properly gather and evaluate the information submitted. Based on my inquiry of the person or persons who manage the system, or those persons directly responsible for gathering the information, the information submitted is, to the best of my knowledge and belief, true, accurate and complete. I am aware that there are significant penalties for submitting false information, including possibility of fine and imprisonment for knowing violations.

Print Name: Gregory J. Wilkens, P.E., P.S.

Print Title: Storm Water Engineer

Signature:  Date: July 17, 2014



State of Ohio Environmental Protection Agency

SMALL MS4 ANNUAL REPORT FORM

PUBLIC EDUCATION & OUTREACH Estimate Your Permit Area's Total Population: 144,795

BMP (mechanism) & Responsible Party	Measurable Goal	Theme or Message	Target Audience	% of Target Audience Reached	Summary of Results	Effective (Yes or No)
Media Awareness Packet Butler County Storm Water District	Annually prepare at least one Press Release Packet and distribute to local media	Watershed Awareness & Water Quality	General Public	<p>Television: WLWT-TV Channel 5: 218 advertisement spots purchased, that totaled over 4.5 million viewer impressions.</p> <p>Digital Advertisements Ad spots for 15 sec. video segments . Reach: 45,285</p> <p>Website: www.savelocalwaters.org Page views: 20,973 Unique visits: 16,014</p> <p>Social Media: Facebook Page likes: 362 Reach: 95,292 Impressions: 1,719,610</p> <p>Social Media: Twitter Followers: 193 Following:457 Tweets: 207</p> <p>Billboards: 5 locations Daily Impressions: 887,405</p>	The Regional Storm Water Collaborative utilizes mass media and shared resources in order to raise awareness concerning environmental quality issues in the Ohio River Valley. By leveraging joint resources, our alliance is capable of reaching regional audiences with a consistent message in the most economical and efficient manner possible. The Butler County Storm Water District, is an active founding member of the Regional Storm Water Collaborative..	Yes
Media Awareness Packet Butler County Storm Water District	Annually prepare at least one Press Release Packet and distribute to local media	Watershed Awareness and Household Hazardous Waste.	General Public	Average daily traffic count for a single billboard was 10,157. Campaign utilized 28 billboards at various times during a six month period.	The Butler County Storm Water District conducts an annual outdoor billboard advertising campaign. The boards delivers the messages such as "Too Toxic To Trash", "Storm Drains are not Garbage Cans", and "Explore Your Watershed". The message prompts people to report	Yes



<p>Education Program for Local Schools Butler Soil & Water Conservation District</p>	<p>Adopt and Distribute K-12 Water Curricula Program</p>	<p>Watershed Awareness & Water Quality</p>	<p>Students: grades K-12</p>	<p>163 classroom programs reached 4,471 students and 588 adults.</p>	<p>This year the Butler Soil and Water Conservation District conducted 163 education programs within NPDES Phase II affected areas in Butler County. The Butler Soil and Water Conservation District offers programs and resources to local schools/groups. Full day workshops and introductory programs for the following programs are available: Project WET (Water Education for Teachers), Project WILD Aquatics, stream walks, stream monitoring, and On the Trail of Non-Point Pollution Sources.</p>	<p>Yes</p>
<p>Education Program for Local Schools Butler County Department of Water and Sewer</p>	<p>Adopt and Distribute K-12 Water Curricula Program</p>	<p>Watershed Awareness & Water Quality</p>	<p>Students: grades K-12</p>	<p>279 presentations reached 7,838 students.</p>	<p>The Butler County Department of Water and Sewer provides a variety of educational programs to school districts within Butler County. During 2012, the environmental educator made 279 presentations relating to water quality, litter prevention, waste reduction, recycling, conservation, environmental stewardship and pollution reduction that reached over 7,838 students.</p>	<p>Yes</p>



Storm Drain Labeling	Purchase and coordinate installation of 300 labels per year until all labels are marked.	Hazards of Illicit Discharge	Homeowners and General Public	Five separate labeling events were planned for the 2013 permit year. The five events resulted in the installation of one hundred eighty two (182) storm drain labels on catch basins and the distribution of illicit discharge information to houses by community volunteers.	Storm drain labels are simple and effective best management practices to prevent non-point source pollution from entering waterways in our community and those downstream. The labels are intended to make urban and suburban homeowners think twice before dumping material down the storm sewers and into rivers, streams, and ponds in their neighborhoods.	Yes
BONUS ACTIVITIES	N/A	SEE ATTACHMENT "C"	This list contains activities not specifically required by permit or listed as part of the District's Storm Water Management Plan.			
Butler County Storm Water District						

PUBLIC EDUCATION & OUTREACH

- Summarize activities you plan to undertake during the next reporting cycle.

BMP (mechanism) & Responsible Party	Measurable Goal	Theme or Message	Target Audience	% of Target Audience to be Reached	Summary of Planned Activities	Proposed Schedule
Media Awareness Butler County Storm Water District	Annually prepare at least one Press Release Packet and distribute to local media	Household Hazardous Waste	General Public	Dependent on reach of selected media.	Promote public education theme utilizing billboard advertising	Various months throughout the year.
Media Awareness	Annually prepare at least	Various themes which	General Public	Dependent on reach of	As a member of the	Will vary based on



SMALL MS4 ANNUAL REPORT FORM

State of Ohio Environmental Protection Agency

<p>Butler County Storm Water District</p>	<p>one Press Release Packet and distribute to local media</p>	<p>may include, and are not limited to; water quality, litter prevention, waste reduction, recycling, conservation, environmental stewardship and pollution reduction</p>		<p>selected media.</p>	<p>Regional Storm Water Collaborative, contract with various local mass media networks to provide billboard, radio and/or television spots as Public Service Announcements</p>	<p>number of participating municipalities and the type of media selected.</p>
<p>Education Program for Local Schools</p>	<p>Provide K-12 Water Curricula Program</p>	<p>Various themes which may include, and are not limited to; water quality, litter prevention, waste reduction, recycling, conservation, environmental stewardship and pollution reduction</p>	<p>School Children K-12</p>	<p>Dependent on requests for programs</p>	<p>Provide a variety of educational programs to school districts within Butler County.</p>	<p>Provide programs as requested throughout the school year.</p>
<p>Butler Soil & Water Conservation District; Butler County Department of Water and Sewer</p>	<p>Purchase and coordinate installation of 300 labels per year until all labels are marked.</p>	<p>Hazards of Illicit Discharge</p>	<p>Homeowners and General Public</p>	<p>Dependent on number of labels installed and number of houses receiving illicit discharge information door hangers.</p>	<p>Utilize neighborhood volunteers to install storm drain labels and distribute information to residential properties on hazards of illicit discharge</p>	<p>Throughout the year as weather permits.</p>
<p>Storm Drain Labeling</p>						
<p>Butler Soil & Water Conservation District</p>						

PUBLIC INVOLVEMENT/PARTICIPATION



SMALL MS4 ANNUAL REPORT FORM

BMP (Activity) & Responsible Party	Measurable Goal	Theme or Message	Target Audience	Estimate of People Participated	Summary of Results	Effective (Yes or No)
<p>Public Meetings Butler County Storm Water District</p>	<p>Hold two public meetings and one citizen discussion panel per year until Program is implemented.</p>	<p>District Open House</p>	<p>General Public</p>	<p>Approx. 5,000 people. (Butler County Fair average attendance is around 100,000 people.)</p>	<p>From July 20 – July 26, 2013, the Butler County Storm Water District presented a week long open-house forum at the Butler County Fair to allow the public an opportunity review and discuss the Butler County Storm Water Management Plan and the Annual Report. Informational brochures were also distributed about Non-point Source Pollution and Illicit Discharges.</p>	<p>Yes</p>
<p>Public Meetings Butler County Storm Water District</p>	<p>Hold two public meetings and one citizen discussion panel per year until Program is implemented.</p>	<p>Butler County Storm Water District Quarterly Meetings</p>	<p>Butler County Storm Water District Co-permittees</p>	<p>93 People</p>	<p>A total of ninety three (93) people attended the 2013 quarterly public meetings. Since December 2009, the District has foregone lengthy, formal annual meetings and adopt a new format of informal quarterly updates. This change is intended to make meetings more accessible to co-permittees and facilitate the distribution of District information in a timely fashion.</p>	<p>Yes</p>
<p>Butler County Stream Team Butler County Storm Water District</p>	<p>Facilitate and oversee one Stream Clean-Up and Monitoring Program each year.</p>	<p>Volunteers collect data and monitor stream health</p>	<p>General Public and Students</p>	<p>In 2013, the Stream Team analyzed 1625 samples, an average of 135 samples per month. An average of thirty eight (38) volunteers collected and analyzed the samples each month. Over the course of the year, one hundred and four (104) different volunteers participated in stream monitoring activities.</p>	<p>The Butler County Storm Water District teamed up with Miami University Institute for Environmental Science and the Butler Soil and Water Conservation District to promote and implement a monthly volunteer stream monitoring program to assess local stream quality. A protocol for the lab and field procedures was prepared and submitted to the Ohio EPA Credible Data Program. The Stream Team averaged 135 samples a month and 38 volunteers. Over the course of the year, one hundred and four (104) different volunteers have participated. There are 20 fixed locations from watersheds throughout Butler County and the</p>	<p>Yes</p>



SMALL MS4 ANNUAL REPORT FORM

					<p>remainder of the samples comes from locations chosen by volunteers. When samples are returned to the lab, they are analyzed for six parameters: nitrates, phosphates, bacteria, conductivity, total dissolved solids, pH, and turbidity. For more information concerning the Butler County Stream Team, visit : www.butlercountystreamteam.org</p>	
<p>Stream Walks Butler Soil & Water Conservation District</p>	<p>Facilitate and oversee one Stream Clean-Up and Monitoring Program each year.</p>	<p>Water Quality, Stream Ecology, Watershed Awareness</p>	<p>School Children and Teachers</p>	<p>277 children and 55 adults</p>	<p>The Butler Soil and Water Conservation District conducted 4 challenging, yet entertaining, educational stream and/or wetland walks for 146 children and 37 adults. Topics included water quality (chemical, biological, physical attributes) stream ecology, stream attributes, and watershed mapping.</p>	<p>Yes</p>
<p>Clean Sweep of the Great Miami River Butler County Storm Water District</p>	<p>Facilitate and oversee one Stream Clean-Up and Monitoring Program each year.</p>	<p>Litter Prevention</p>	<p>General Public</p>	<p>242 participants in Butler County; 811 participants overall.</p>	<p>Over 800 volunteers participated watershed wide in the "Clean Sweep of the Great Miami River" – an effort to clean up the entire 170-mile river. On May 5th in the Butler County area, 242 participants collected 4.6 tons of litter and 6.6 tons of tires at sites along the Great Miami River.</p>	<p>Yes</p>
<p>Storm Water Hotline, Database and Response Program Butler County Storm Water District</p>	<p>Document Complaints Received and Follow up in a timely manner.</p>	<p>Illicit Discharge, Illegal Dumping; Drainage; Sanitary; HSTS; Erosion; Other</p>	<p>General Public</p>	<p>234 customer inquiries for the year 2013.</p>	<p>The Butler County Storm Water District created a database and response program to document citizen inquiries/complaints and accurately record contact information. The database and response program recorded over 234 customer inquiries for the year 2013. The database tracks information specific to the customers address, method of contact, nature of inquiry, and</p>	<p>Yes</p>



State of Ohio Environmental Protection Agency

SMALL MS4 ANNUAL REPORT FORM

BONUS ACTIVITIES		detail of inquiry/complaint resolution.	
Butler County Storm Water District	N/A	SEE ATTACHMENT 4C	This list contains activities not specifically required by permit or listed as part of the District's Storm Water Management Plan.

PUBLIC INVOLVEMENT/PARTICIPATION

- Summarize activities you plan to undertake during the next reporting cycle.

BMP (Activity) & Responsible Party	Measurable Goal	Theme or Message	Target Audience	Estimate of People to Participate	Summary of Planned Activities	Proposed Schedule
Public Meetings	Hold two public meetings and one citizen discussion panel per year until Program is implemented.	NPDES phase II program information	General Public	As many as event will accommodate.	Utilize a variety of public meeting formats to engage the public such as open house, public hearings, annual meetings, etc.	Various times throughout the year.
Butler County Storm Water District						
Butler County Stream Team	Facilitate and oversee one Stream Clean-Up and Monitoring Program each year.	Volunteers collect data and monitor stream health	General Public and Students	Dependent on number of volunteers	Meet monthly with volunteer stream monitors to assess local stream quality.	Monthly
Butler County Storm Water District						
Clean Sweep of the Great Miami River	Facilitate and oversee one Stream Clean-Up and Monitoring Program each year.	Litter Prevention	General Public	Dependent on number of volunteers	Coordinate clean-up of Great Miami River at multiple sites in Butler County.	Annual
Butler County Storm Water District						
Storm Water Hotline, Database and Response Program	Document Complaints Received and Follow up in a timely manner.	Illicit Discharge, Illegal Dumping; Drainage; Sanitary; HSTS; Erosion; Other	General Public	Dependent on caller volume.	Track information specific to the customers address, method of contact, nature of inquiry, and detail of inquiry/complaint resolution. Respond and resolve complaint in a timely manner.	Daily
Butler County Storm Water District						

LLICIT DISCHARGE DETECTION & ELIMINATION (IDDE)



BMP & Responsible Party	Measurable Goal	Completed (Yes or No)	Cite Local Code(s) Being Used (If available, web link for code(s))	Summary of Results or Activities	Effective (Yes or No)
Ordinance or Other Regulatory Mechanism Butler County Storm Water District	Establish Illicit Discharge Ordinance for District; implement and enforce.	Yes	Butler County Illicit Discharge Detection and Elimination Regulations (Resolution No. 09-11-1954)	On November 12, 2009, the Butler County Board of Commissioners signed and adopted the Illicit Discharge Detection and Elimination Regulations. The final draft is available on the District website: www.stormwaterdistrict.org	Yes
BMP & Responsible Party Storm Sewer System Map Butler County Storm Water District	Measurable Goal Update Storm Sewer Map Annually.	Completed (Yes or No) Yes	Summary of Activities or Updates Using "As-Built" data originating from the 1970's and forward, 100% of known sewer systems have been mapped in the Phase II affected areas within the county. Each year as new development occurs throughout the District, the sewer map will be reviewed and updated.	Summary of Results or Activities On November 12, 2009, the Butler County Board of Commissioners signed and adopted the Illicit Discharge Detection and Elimination Regulations. The final draft is available on the District website: www.stormwaterdistrict.org	Effective (Yes or No) Yes
BMP & Responsible Party HSTS Mapping and List Butler County Storm Water District	Measurable Goal Update HSTS Map Annually	Completed (Yes or No) Yes	Summary of Activities or Updates The Butler County Storm Water District researched archived HSTS records held by the Butler County Health Department. The information can be viewed graphically with the use of the county GIS system. A map has been made identifying existing HSTS within the District. Updates are made on an annual basis. All new applications for HSTS will be added to that data.	Summary of Results or Activities On November 12, 2009, the Butler County Board of Commissioners signed and adopted the Illicit Discharge Detection and Elimination Regulations. The final draft is available on the District website: www.stormwaterdistrict.org	Effective (Yes or No) Yes
BMP & Responsible Party IDDE Plan Butler County Storm Water District	Measurable Goal Develop and implement IDDE plan	Completed (Yes or No) Yes	Summary of Activities or Updates By creating and adopting an illicit discharge regulation, the Storm Water District has established the methods and standards for best management practices (BMPs) for controlling the introduction of pollutants into the municipal separate storm sewer system. The regulation establishes the authority and means by which the District will carry out inspection, monitoring and enforcement procedures necessary to ensure compliance. The Butler County Storm Water District created a database and response program to document and accurately record information regarding spill reports, illicit discharges, illegal dumping, and citizen complaints. The information obtained from the hotline and database can be mapped with the use of the county GIS system. Problem areas can be viewed graphically based on type, location, and frequency. This database is updated on a regular basis to help identify and resolve problem areas.	Summary of Results or Activities On November 12, 2009, the Butler County Board of Commissioners signed and adopted the Illicit Discharge Detection and Elimination Regulations. The final draft is available on the District website: www.stormwaterdistrict.org	Effective (Yes or No) Yes
BMP & Responsible Party	Measurable Goal	Completed	# of Outfalls	# of Dry-Weather	# of Illicit Discharges:



SMALL MS4 ANNUAL REPORT FORM

State of Ohio Environmental Protection Agency

		(Yes or No)	Screened	Flows Identified	Identified*	Eliminated	(Yes or No)
Dry-Weather Screening of Outfalls Total # of Outfalls 8,692	Inspect 400 mapped outfalls and sample when necessary	Yes	2599	653	14	0	Yes
	Butler County Storm Water District					Inventory completed in December of 2013. The fourteen high priority dry weather flows will be revisited in 2014.	
BONUS ACTIVITIES	N/A	SEE ATTACHMENT "C"	This list contains activities not specifically required by permit or listed as part of the District's Storm Water Management Plan.				
Butler County Storm Water District							

*include an attachment which provides schedules for elimination of illicit connections that have been identified but have yet to be eliminated.

ILLICIT DISCHARGE DETECTION & ELIMINATION (IDDE)

- Summarize activities you plan to undertake for the next reporting cycle.

BMP & Responsible Party	Measurable Goal	Summary of Planned Activities	Proposed Schedule
Ordinance or Other Regulatory Mechanism	Continue to implement and enforce IDDE regulation.	Review IDDE regulation and update as needed.	Annually
Butler County Storm Water District			
Storm Sewer System Map	Update Storm Sewer Map Annually.	Each year as new development occurs throughout the District the sewer map will be reviewed and updated.	Annually
Butler County Storm Water District			
HSTS Mapping and List	Update HSTS Map Annually	Updates are made on an annual basis. All new applications for HSTS will be added to that data.	Annually
Butler County Storm Water District			
IDDE Plan	Continue to implement IDDE plan	Review and update plan as needed.	Annually
Butler County Storm Water District			
Dry-Weather Screening of Outfalls	Inspect 400 mapped outfalls and sample when necessary	In 2013, Butler County Storm Water District completed a multiple phase county-wide, public and private, outfall inventory project. In 2014, the District will identify the total number of publicly owned and operated outfalls from the total number of outfalls inventoried. An annual outfall inspection program will be created and	Permit Year 2014
Butler County Storm Water District			



State of Ohio Environmental Protection Agency

SMALL MS4 ANNUAL REPORT FORM

			implemented to address publicly owned outfalls.	
--	--	--	---	--

CONSTRUCTION SITE RUNOFF CONTROL



SMALL MS4 ANNUAL REPORT FORM

BMP & Responsible Party	Measurable Goal	Completed (Yes or No)	Cite Local Code(s) Being Used (if available, web link for code(s))	Summary of Results or Activities	Effective (Yes or No)
Ordinance or Other Regulatory Mechanism Butler County Storm Water District	Compliance with NPDES Construction General Permit requirements.	Yes	Butler County Subdivision Regulations	The Butler County Subdivision regulations were revised in 2011. The revisions were adopted on January 12, 2012. The revisions covered a number of non-point source pollution topics including construction site storm water discharges and groundwater pollution potential.	Yes
BMP & Responsible Party Sediment and Erosion Control Requirements Butler County Storm Water District	Compliance with NPDES Construction General Permit requirements.	Yes	Standards Being Used Erosion and Sediment Control Regulations: Article VII – Butler County Subdivision Regulations	Erosion and Sediment Control Regulations: Article VII were adopted as part of the Butler County Subdivision regulations on March 12, 2007. The changes were effective during the Summer of 2007.	Yes
BMP & Responsible Party Complaint Process Butler County Storm Water District	Respond to all complaints	Yes	Complaints Received: 3 Complaints Followed-Up On: 3	Responded to and resolved all complaints.	Yes
BMP & Responsible Party Site Plan Review Procedures Butler County Storm Water District	Review all site plans for compliance	Yes	# of Applicable Sites Requiring Plans: 451 # of Plans Reviewed: 451	Made plan comments to ensure that all sites were in compliance with regulations.	Yes
BMP & Responsible Party Site Inspection Procedures	Inspect all applicable sites for compliance	Yes	Site Inspections Performed: # of Applicable Sites: 451 # Performed: 4,599 Avg. Frequency: Every two	Inspected active sites for compliance with	Yes



BMP & Responsible Party	Measurable Goal	Completed (Yes or No)	Violations		Erosion and Sediment control Regulations	Effective (Yes or No)
			# of Violation Letters	# of Enforcement Actions		
Butler County Storm Water District	Ensure compliance with regulations.	Yes	6	0	Violations resolved. Enforcement actions unnecessary.	Yes

*Include an attachment which identifies applicable sites within your jurisdiction for this reporting period.

CONSTRUCTION SITE RUNOFF CONTROL

- Summarize activities you plan to undertake during the next reporting cycle.

BMP & Responsible Party	Measurable Goal	Summary of Planned Activities	Proposed Schedule
Butler County Storm Water District	Compliance with NPDES Construction General Permit requirements.	Review Federal and State rule changes and revise county regulations.	As needed.
Butler County Storm Water District	Compliance with NPDES Construction General Permit requirements.	Review Federal and State rule changes and revise county regulations.	As needed.
Butler County Storm Water District	Respond to all complaints.	Respond to all complaints and ensure compliance with all regulations.	As needed.
Butler County Storm Water District	Review all site plans for compliance	Continue to make plan comments to ensure that all sites were in compliance with regulations.	As needed.



State of Ohio Environmental Protection Agency

SMALL MS4 ANNUAL REPORT FORM

Site Inspection Procedures	Inspect all applicable sites for compliance	Inspect active sites for compliance with Erosion and Sediment control Regulations	As needed.
Butler County Storm Water District			
Enforcement Procedures	Ensure compliance with regulations.	Enforce compliance on all active sites.	As needed.
Butler County Storm Water District			

POST-CONSTRUCTION STORM WATER MANAGEMENT IN NEW DEVELOPMENT AND REDEVELOPMENT

BMP & Responsible Party	Measurable Goal	Completed (Yes or No)	Cite Local Code(s) Being Used (If available, web link for code(s))	Summary of Results or Activities	Effective (Yes or No)
-------------------------	-----------------	-----------------------	--	----------------------------------	-----------------------



Ordinance or Other Regulatory Mechanism Butler County Storm Water District and Co-Permittees	Comply with post-construction requirements for NPDES phase II permit. (ie. Provide for open space, minimization of impervious area, protection of natural resources, etc.)	Yes	Butler County Subdivision Regulations Butler County Flood Damage Prevention Regulations Butler County Zoning Code Township Zoning Code (Fairfield, Liberty, St. Clair, Wayne, West Chester) City of Trenton Subdivision Regulations and Zoning	All documents have been updated to include post construction requirements. Documents are reviewed as needed to ensure compliance.	Yes
BMP & Responsible Party Post-Construction Requirements Butler County Storm Water District and Co-Permittees	Measurable Goal Comply with post-construction requirements for NPDES phase II permit.	Completed (Yes or No) Yes	Structural and/or Non-Structural Standards Being Used Ohio EPA Construction General Permit requirements ODNR Rainwater and Land Development Manual ODOT Location and Design Manual Also, see above document list.	Summary of Results or Activities All documents have been updated to include post construction requirements. Documents are reviewed as needed to ensure compliance.	Effective (Yes or No) Yes
BMP & Responsible Party Site Plan Review Procedures Butler County Storm Water District	Measurable Goal Review all sites required to obtain Ohio EPA Construction General Permit	Completed (Yes or No) Yes	# of Applicable Sites Requiring Post-Const. BMPs 14 # of Plans Reviewed 14	Summary of Results or Activities Made plan comments to ensure that all sites were in compliance with regulations.	Effective (Yes or No) Yes
BMP & Responsible Party Site Inspection Procedures Butler County Storm Water District	Measurable Goal Inspect all sites that require post construction BMPs (ie. greater than 5 acres)	Completed (Yes or No) Yes	Site Inspections Performed # Performed 126 Avg. Frequency Every two weeks	Summary of Results or Activities Inspected active sites for compliance with Erosion and Sediment Control Regulations.	Effective (Yes or No) Yes
BMP & Responsible Party Enforcement Procedures Butler County Storm Water District	Measurable Goal Ensure compliance with E&SC regulations.	Completed (Yes or No) Yes	Violations # of Violation Letters 0 # of Enforcement Actions 0	Summary of Results or Activities Enforced compliance on all active sites.	Effective (Yes or No) Yes



State of Ohio Environmental Protection Agency

SMALL MS4 ANNUAL REPORT FORM

BMP & Responsible Party	Measurable Goal	Completed (Yes or No)	# of Sites Requiring Plans/Agreements	# of Plans Developed/Agreements in Place	Summary of Results or Activities	Effective (Yes or No)
Long-Term O&M Plans/Agreements Butler County Storm Water District	Ensure that facilities are either publicly owned and operated or a Home Owners Association or a Property Owners Association is established.	Yes	15	15	The Butler County Engineers Office coordinates and plans inspections of all publicly owned and operated drainage structures within the District on an annual basis. Facilities and structures have maintenance performed as necessary based upon inspection results. A report is issued annually to the County commissioners on all inspection and maintenance activities.	Yes

POST-CONSTRUCTION STORM WATER MANAGEMENT IN NEW DEVELOPMENT AND REDEVELOPMENT

- Summarize activities you plan to undertake for the next reporting cycle.

BMP & Responsible Party	Measurable Goal	Summary of Planned Activities	Proposed Schedule
Ordinance or Other Regulatory Mechanism Butler County Storm Water District	Comply with post-construction requirements for NPDES phase II permit. (ie. Provide for open space, minimization of impervious area, protection of natural resources, etc.)	All documents will be updated to include post construction requirements. Documents are reviewed as needed to ensure compliance.	Annually
Post-Construction Requirements Butler County Storm Water District	Comply with post-construction requirements for NPDES phase II permit.	All documents will be updated to include post construction requirements. Documents are reviewed as needed to ensure compliance.	Annually
Site Plan Review Procedures Butler County Storm Water District	Review all sites required to obtain Ohio EPA Construction General Permit	Make plan comments to ensure that all sites were in compliance with regulations.	Annually
Site Inspection Procedures	Inspect all sites that require post construction	Inspect active sites for compliance with Erosion	Annually



State of Ohio Environmental Protection Agency

SMALL MS4 ANNUAL REPORT FORM

	BMPs (ie. greater than 5 acres)	and Sediment Control Regulations.	
Butler County Storm Water District			
Enforcement Procedures	Ensure compliance with E&SC regulations.	Enforce compliance on all active sites.	Annually
Butler County Storm Water District			
Long-Term O&M Plans/Agreements	Ensure that facilities are either publicly owned and operated or a Home Owners Association or a Property Owners Association is established.	The Butler County Engineers Office will continue to coordinate and plan inspections of all publicly owned and operated drainage structures within the District on an annual basis. Facilities and structures have maintenance performed as necessary based upon inspection results. A report is issued annually to the County commissioners on all inspection and maintenance activities.	Annually
Butler County Storm Water District			

POLLUTION PREVENTION/GOOD HOUSEKEEPING FOR MUNICIPAL OPERATIONS

BMP & Responsible	Measurable Goal	Completed	Topic(s)	Targeted Audience	# of Employees	Summary of Activity	Effective



SMALL MS4 ANNUAL REPORT FORM

Party	Establish plan for training and train 25% per year	(Yes or No)	Varied by facility. Topics include: Spill Identification and Emergency response; SPCC; Construction Site Runoff Control; Snow and Ice Control	Municipal Employees	Attended	(Yes or No)
Employee Training Program		Yes			94 Employees*	Yes
Butler County Storm Water District						
List of Municipal Facilities Subject to Program						
1. Butler County Engineer's Office						
2. City of Trenton						
3. Fairfield Township (Morris Road)						
4. Fairfield Township (Tylersville Road)						
5. Hanover Township						
6. Lemon Township						
7. Liberty Township						
8. Madison Township						
9. Ross Township						
10. St. Clair Township						
11. Village of New Miami						
12. Village of Seven Mile						
13. Wayne Township						
14. West Chester Township						
Summarize Maintenance Activities and Schedules						
MS4 Maintenance	Maintenance activities are performed on an as-needed basis.			Summarize Activities Performed		
	The Butler County Engineers Office coordinates and plans inspections of all drainage structures within the District on an annual basis. Facilities and structures have maintenance performed as necessary based upon inspection results. A report is issued annually to the County commissioners on all inspection and maintenance activities.			Frequencies of Such Inspections Annual		
	Procedures Developed (Yes or No)			Document Amounts of Wastes Properly Disposed		
Disposal of Wastes	Yes		2,932* gallons of automotive fluids recycled (i.e. Transmission fluid, gear oil, engine oil)			
	Covered (Yes or No)			Summarize Measures Taken to Minimize Usage		
Road Salt	Yes		6,986*	Salt usage minimized through the use of Standard Operating Procedures (SOPs) for snow and ice control. Further reductions are achieved with the use of the automated brine maker and distribution tanks for pretreatment. Also investigated and experimented with beet juice as salt alternative.		
Pesticide & Herbicide Usage	Procedures Developed (Yes or No)			Summarize Measures Taken to Minimize Usage		



Fertilizer Usage	Yes	2,092 gallons as applied	Butler County Engineers Office has developed and implemented Standard Operating Procedures (SOPs) for pesticide and herbicide application. All employees that participate in pesticide and herbicide application are licensed by the Ohio Department of Agriculture.
	Procedures Developed (Yes or No)	Pounds Used	Summarize Measures Taken to Minimize Usage
	Yes	1800	No phosphorus fertilizer used. Application rate set at 5 lbs. per 1000 sq. ft.
Street Sweeping	Yes		Document Amount of Material Collected and Properly Disposed
	Procedures Developed (Yes or No)		Street sweeping as needed for county bridges and curb & gutter roads. Procedure in place for dewatering and disposal of collected waste. Currently procedures do not include a method to calculate and record the amount of material collected.
Flood Management Projects	N/A		Summarize any New or Existing Flood Management Projects that were Assessed for Impacts on Water Quality
BONUS ACTIVITIES	N/A	SEE ATTACHMENT "C"	This list contains activities that not specifically required by permit or listed as part of the District's Storm Water Management Plan.
Butler County Storm Water District			

* Numbers reflect totals as reported by 8 of 14 facilities.

POLLUTION PREVENTION/GOOD HOUSEKEEPING FOR MUNICIPAL OPERATIONS

- Summarize activities you plan to undertake for the next reporting cycle.

BMP & Responsible Party	Measurable Goal	Summary of Planned Activities	Proposed Schedule
Employee Training Program	Train 25% of municipal employees subject to program.	Continue to implement training component of facility PPGHP.	Annually
Butler County Storm Water District			
List of Facilities Subject to Program	List all facilities subject to Program.	Review existing list of facilities subject to program and make changes as needed.	Annually
Butler County Storm Water District			
MS4 Maintenance	Inspect drainage structures within the District on an annual basis.	Coordinate and plan inspections of drainage structures within the District on an annual basis. Perform maintenance as necessary based upon inspection results. Issue report annually to the County commissioners on all inspection and maintenance activities.	Annually
Butler County Storm Water District			



State of Ohio Environmental Protection Agency

SMALL MS4 ANNUAL REPORT FORM

Disposal of Wastes	Gallons of oil properly recycled/recovered	Recycle oil.	Continuous.
Butler County Storm Water District			
Road Salt			
Butler County Storm Water District	Minimize salt usage	Minimize salt usage through the use of Snow and Ice control SOPs, use of brine pretreatment system and investigate salt alternatives.	Annually
Pesticide & Herbicide Usage			
Butler County Storm Water District	Minimize pesticide and herbicide usage	Continue to implement implemented Standard Operating Procedures (SOPs) for pesticide and herbicide application. Ensure employees obtain and maintain licensed by the Ohio Department of Agriculture license.	Annually
Fertilizer Usage			
Butler County Storm Water District	N/A	N/A	N/A
Street Sweeping			
Butler County Storm Water District	Properly dispose of and Document Amount of Material Collected	Develop and implement a method to calculate and record the amount of material collected.	Complete by the end of the permit cycle- 2014.
Flood Management Projects			
Butler County Storm Water District	N/A	N/A	N/A

PROPOSED CHANGES TO YOUR SWMP (IF ANY)

- Summarize any proposed changes to your SWMP, including changes to any BMPs or any identified measurable goals that apply to the program elements. If you fail to satisfy measurable goals for the reporting year, please explain why.



State of Ohio Environmental Protection Agency

SMALL MS4 ANNUAL REPORT FORM

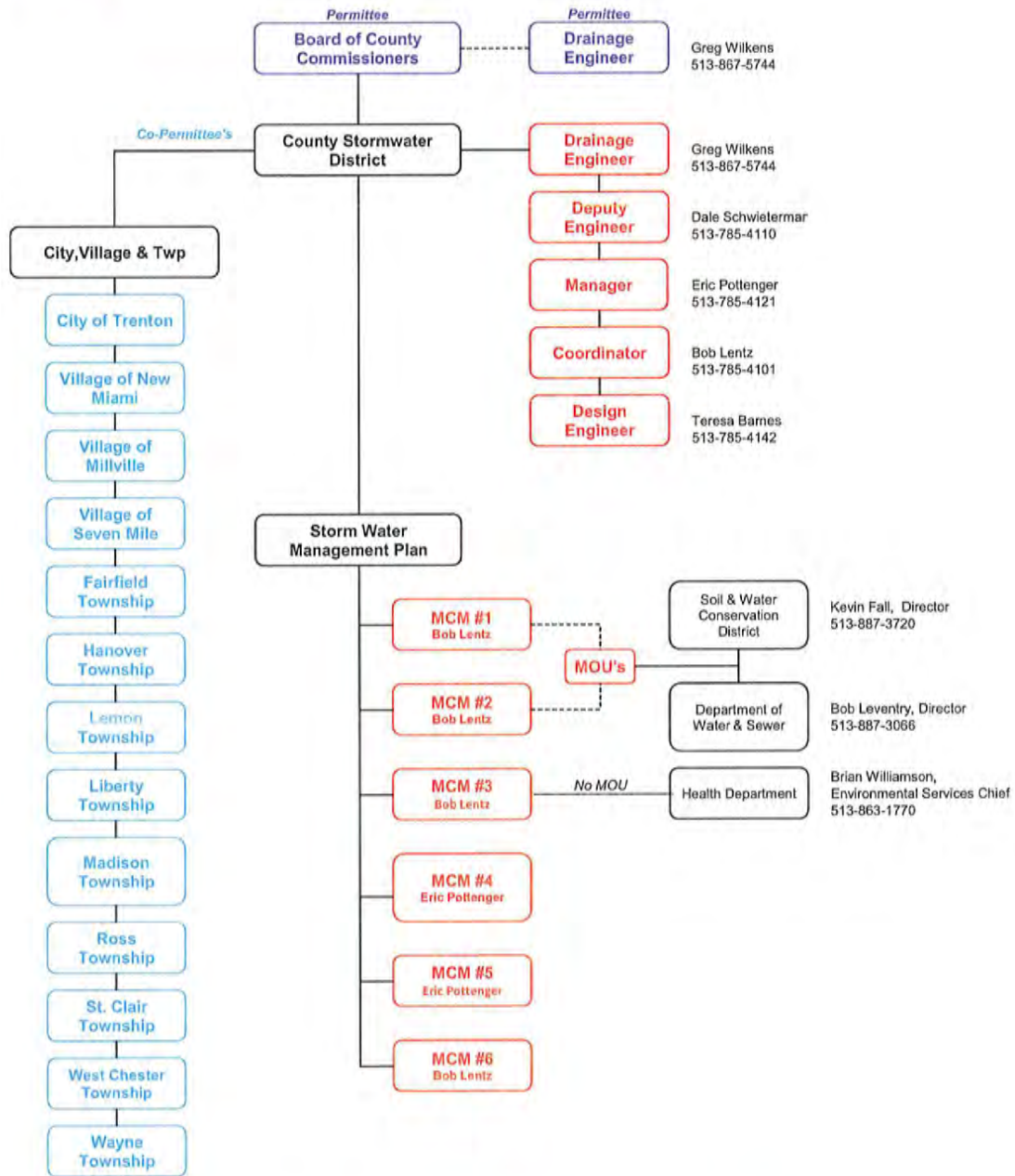
VARIANCES GRANTED (IF ANY)

- Identify and summarize any variances granted under your storm water program.



Organizational Chart

NPDES Phase II



Attachment "C"
Butler County Storm Water District Bonus Activities

B1

Activity: Watershed Signage

Date: 01/01/2013 - 12/31/2013

The Butler County Storm Water District is involved with watershed awareness and education throughout Butler County. This is accomplished in part by coordinating stream crossing sign installation with public awareness and education programs. In 2013 the existing signage was inventoried and assessed for maintenance needs. No additional signs were installed.

B2

Activity: Mill Creek Watershed Council

Date: 01/01/2013 – 01//2013

A representative from the Butler County Storm Water District served on the Board of Trustees and participated in quarterly meetings of the Mill Creek Watershed Council. The purpose of the Mill Creek Watershed Council is to maintain and enhance the asset-value of the Mill Creek by providing resources to the communities and the region to realize lasting benefits. The Mill Creek Watershed Council is a publicly funded, non-profit corporation representing all 37 political jurisdictions in the Mill Creek watershed. The Council acts as a forum for making watershed-based decisions by convening and coordinating meetings and projects related to the improvement of the Mill Creek. Through these forums, the Council invites public input on watershed-related issues. The full council meets quarterly at locations throughout the watershed and creates a quarterly newsletter, Voice of the Mill Creek, that is mailed to approximately 1400 addresses throughout the watershed. Please visit the following website for additional information: <http://www.millcreekwatershed.org/home.html>

B3

Activity: Water Management Association of Ohio & the Ohio Stormwater Association

Date: 01/01/2013 - 12/31/2013

A representative from the Butler County Storm Water District serves on the Board of Directors and attended Ohio Stormwater Association Committee Meetings. The Ohio Stormwater Association is a group of public and private citizens dedicated to advancing the management of stormwater and related natural resources through education, leadership, watershed-based coordination and technical assistance in Ohio. The Ohio Stormwater Association is a not-for-profit, non-political organization. The Ohio Stormwater Association is organized formally as the stormwater division of the Water Management Association of Ohio which maintains a 501(c)4 status. The Ohio Stormwater Association provides educational and networking opportunities for people focused on reducing the negative impacts of stormwater runoff. The Ohio Stormwater Association provides quarterly educational meetings on topics of interest to our members and helps to sponsor the Ohio Stormwater Conference being held each spring. This year the conference was held in Toledo, Ohio. More than 400 people attended five concurrent tracks over the course of two days.

B4

Activity: Miami Valley Storm Water Awareness Team

Date: 01/01/2013 – 12/31/2013

The Miami Valley Storm Water Awareness Team (SWAT) is a partnership of educational program providers that serve the regulated communities. The group's mission is to education through effective collaborations non-rural residents of the Miami Valley about how to reduce runoff pollution. Individual members of the SWAT want to strengthen connections among related programs and the regulated jurisdictions. A representative from the Butler County Storm Water District attended the SWAT meetings and participated in the creation and implementation of a Storm Water Communication Plan for public outreach and education activities.

B5

Activity: Classroom Presentation – Butler County Children’s Water Festival

Date: 10/11/2013

The Butler County Water Festival was held October 11, 2013 at Miami University Hamilton. The "Hands on Day of Discovery" was attended by 1,327 fourth, fifth and sixth graders, and over 100 presenters and volunteers from across Butler County. A representative from the Butler County Storm Water District presented to 5 classrooms of children on the topics of impervious surfaces, non-point source pollution, and storm water runoff. The Butler County Storm Water District also supported the festival financially.

B6

Activity: Public Presentations – Miami Valley Storm Water Awareness Team – MS4 Workshop

Date: 4/11/2013

The Miami Valley Stormwater Awareness Team's (SWAT) mission is to assist regulated agencies in educating their urban residents about reducing stormwater runoff pollution. Educators from Southwestern Ohio County agencies collaborate to provide storm water education resources and materials to regulated jurisdictions. On April 11, 2013, The Stormwater Awareness Team hosted a Public Education and Outreach meeting. The meeting provided MS4s with the opportunity to gather resources, network, and learn how to educate their residents about the 2013 theme, Household Hazardous Waste. A representative from The Butler County Storm Water District was among the speakers at this years workshop. Information was presented on BMP incentives and the creation of a credits program. Visit www.mvstormwater.com for more information about the Miami Valley SWAT.

B7

Activity: Public Presentations - Earth Day (Hamilton, Ohio)

Date: 04/19/13

More than 20 state, regional and local environmental organizations, including the Butler County Storm Water District, were at the event to encourage recycling, resource conservation and awareness of local environmental issues. An estimated 1,000 people stopped by to improve their environmental awareness. Butler County Storm Water District also supported the event financially.

B8

Activity: Public Presentations - EarthFest (Oxford, Ohio)

Date: 04/20/14

The Butler Soil and Water Conservation District were at the event to encourage recycling, resource conservation and awareness of local environmental issues. Live music, informational displays and activities for children presented by numerous Miami and community groups were featured. An estimated 115 people stopped by to improve their environmental awareness.

B9

Activity: Public Presentations – Homearama – Water Quality Display

Date: 07/13/13 – 07/28/13

The Butler Soil and Water Conservation District provided a water quality display and handed out brochures. Approximately 1,000 people attended the event.

B10

Activity: Local Emergency Planning Committee (LEPC) Quarterly Meetings

Date: 01/01/2013 – 12/31/2013

The Butler County Storm Water District is an active participant in the Local Emergency Planning Committee (BCLEPC). The BCLEPC is comprised of members representing several occupational categories: elected local officials, law enforcement, emergency management, fire fighting, first aid, health, local environment; hospital, transportation, electronic media, print media, community groups, facility owners and operators subject to EPCRA, interested citizens and non-elected local officials.

According to the Ohio State Emergency Response Commission (SERC), the LEPC shall prepare local hazardous materials emergency plans that indicate the facilities that use, produce, or store extremely hazardous substances within the county; serve as the repository for local reports filed under EPCRA; and direct local EPCRA implementation activities and perform associated outreach functions to increase the awareness and understanding of and compliance with the EPCRA program

B11**Activity: Watershed Inventory – Miami University’s Institute for Environment and Sustainability****Date: 01/01/2013 - 05/10/2013**

The Butler County Storm Water District and the Butler Soil and Water Conservation District advised the the university project team in the selection and development of a Public Service Project. The project team decided to compile non-time sensitive elements of a watershed action plan and conduct an inventory of Four Mile Creek Watershed (FMCW) in accordance with the Ohio Environmental Protection Agency’s (Ohio EPA) “A Guide to Developing Local Watershed Action Plans in Ohio.” The Ohio EPA guide outlines the categories of information that are most relevant in developing a comprehensive understanding of a watershed. These categories include natural features and habitats, water quality, human use and influence, and the effects of local point and nonpoint source pollutants within the FMCW. In addition to gathering this information, the team used a geographic information system (GIS) to create 26 maps that provide visual depictions of the watershed characteristics. The inventory was completed and a final document presented May 10, 2013.

B12**Activity: Storm Water Hotline – Regional Storm Water Collaborative****Date: 01/01/2013 – 12/31/2013**

The Butler County Storm Water District has partnered with the Regional Storm Water Collaborative to create a centralized storm water hotline number (513-946-3999) for Butler, Hamilton and Warren Counties and the newest collaborative member, Northern Kentucky. The Storm Water Hotline provides prompt service to residents in the tri-state region. The automated phone service directs the caller to the appropriate jurisdiction and enables citizens to call 24-hours a day, seven days a week to report any storm water concerns. The hotline number was publicized through the use billboard advertisements. For more information on the Regional Storm Water Collaborative and the non-point source pollution advertising campaign, please visit <http://www.savelocalwaters.org>

B13**Activity: Website Database and Mapping - Butler County Stream Team****Date: 01/01/2013 - 12/31/2013**

The Butler County Stream Team, a public volunteer stream monitoring group, maintains and continues to develop a website that is capable of displaying the location of all sampling sites and all associated data collected from 2006 – present. A Google Maps function has been integrated into the website to display the location of each individual sampling site. The site will allow the data to be searched by specific time period, individual site ID, municipality, watershed, and specific analyte. The user can generate graphs and reports specific to their interest. Photos depicting the physical conditions of each site can be included as well. The project was designed, funded and managed by the Butler County Storm Water District.

B14**Activity: Website and Content Management System – Miami Valley Stormwater Awareness Team****Date: 01/01/2013 - 12/31/2013**

The Miami Valley Storm Water Awareness Team (MVSAT), a collaboration of education program providers and MS4s in the Great Miami River Watershed, maintains and continues to develop a new website. The purpose and function of this site is similar to the USEPA NPS Toolbox. The site serves as a clearinghouse for public education and outreach materials developed by members of the MVSAT. The website, and all its contents, are available for use by local municipalities and the general public. The project is designed, funded and managed by the Butler County Storm Water District.

B15**Activity: Illicit Discharge Brochure****Date: 10/11/2013**

In an effort to inform the general public of hazards associated with illicit discharges and improper disposal of waste, the Butler County Storm Water District has distributed "Discover Storm Water" and "Watershed Protection" Project WET activity guides to 1,327 children at the Butler County Water Festival.

B16**Activity: Local restoration and habitat improvement projects****Date: 01/01/2013 - 12/31/2013**

Wildermuth Stream and Wetland restoration Project: Butler County Water and Sewer is serving as sponsor and project manager, with support from Butler County Storm Water District and MCWCC. Project is partially funded through Ohio EPA's 319 program, and will enhance and restore 20+ acres of riparian wetland along the East Fork of Mill Creek, as well as improve instream habitat conditions. Project objectives include improved water quality, improved habitat, and reduced flooding.

The Mill Creek Confluence Wetlands Creation Project is a collaboration between MCWCC, Butler County Water and Sewer, Metropolitan Sewer District of Greater Cincinnati, and the City of Sharonville; the Project received a \$1.7 million Ohio Water Pollution Control Loan Fund through the Water Resource Restoration Sponsor Program (WRRSP) in late 2007. This project will bring the confluence of the Mill Creek (main stem) and East Fork into attainment with Warm Water Habitat Aquatic Life Use standards.

The Mill Creek Confluence Restoration Project: The project is a collaboration between MCWCC, Butler County Water and Sewer, Metropolitan Sewer District of Greater Cincinnati, and the City of Sharonville; the Project received a \$1.7 million Ohio Water Pollution Control Loan Fund through the Water Resource Restoration Sponsor Program (WRRSP) in late 2007. This project, will bring the confluence of the Mill Creek (main stem) and East Fork into attainment with Warm Water Habitat Aquatic Life Use standards.
<http://www.oki.org/elements/DOC/Environment/WaterQuality/MillCreekHeadwatersProject.doc>

B17**Activity: Five Star Restoration Grant - Wetland Extended Detention Basin Project****Date: 01/01/2013 - 12/31/2013**

Project partners continue to monitor an existing detention basin which was restored to a riparian wetland, principally to provide habitat and treat upland runoff before entering the Upper Mill Creek. The monitoring program was enacted by the partners to evaluate the efficiency of the wetland in its assimilation of pollutants following storm events. Serving as a natural method to treat non-point source runoff, the project also provides a local example of the type of palustrine environment that once existed in the Mill Creek Watershed before urban and suburban land uses dominated the landscape. Project partners include the Butler SWCD, Butler County Stormwater District, Beckett Ridge HOA, Mill Creek Watershed Council, Ohio Department of Natural Resources, and Miami (OH) University's Institute of Environmental Sciences (IES)

B18**Activity: Rain Garden Installation at Voice of America Park****Date: 01/01/2009 - Present**

Installation of the rain garden began in November of 2008. The selection and placement of plants was completed by the end of April 2009. The rain garden is located in a high traffic area directly in front of the "Boat House" facility. The display includes educational signage and is a great example of a residential application for rain gardens. The site continues to be inspected and maintained throughout the year as necessary.

B19**Activity: Monitor BMP's – Butler County Engineers Office****Date: 01/01/2013 - 12/31/2013**

Several BMPs for the Butler County Engineer's Office were designed and installed at the property located at 1921 Fairgrove Avenue in Hamilton, Ohio. The facility improvements include a bioretention area, two oil & grit separators, and a water quality pond. The design of the bioretention area allows for the collection and treatment of storm water runoff from existing paved areas. In addition to providing pollutant removal, the bioretention facility adds aesthetic appeal to a currently bare area. The best management practices are inspected and maintained throughout the year as necessary.

B20**Activity: Watershed Monitoring Network - Pilot Study-Four Mile Creek****Date: 01/01/2009 – Present**

The Butler County Storm Water District (BCSWD) recognizes that watershed monitoring data is fundamentally necessary to gain an understanding of the water quantity, water quality and nutrient budgets of Butler County watersheds. This project will assist BCSWD in managing water resources to meet multiple objectives within the County. Those objectives include:

- prediction of frequency and severity of floods
- establishing quantity and quality of water for aquatic life and recreation
- managing water use
- developing watershed policies, procedures, and action plans for land use and development

A monitoring network is the “backbone” for facilitating good decision-making toward comprehensive water resource management. BCSWD ultimately intends to collect countywide information to develop guidelines for future activities within its watersheds. This work will create building blocks to drive guidelines for future development within BCSWD watersheds. A pilot watershed monitoring project with Four Mile Creek will be invaluable for projecting BCSWD (and stakeholder) staffing, financial, and other resource needs required to extend monitoring from watershed to watershed. The pilot project will facilitate development of standard operating procedures and processes needed to improve, streamline, and ultimately replicate the processes into each additional watershed to be monitored.

B21**Activity: P.R.I.D.E. Program Activity Description: Litter Collection and Clean-up****Date: 01/01/2013 - 12/31/2013**

The Butler County Sheriff's Roadside Collection litter Program is called PRIDE. The acronym stands for “Providing Responsibilities for Inmates through Duties for the Environment”. Led by the litter crew supervisor, inmates from the Resolutions medium security prison collect litter along public rights-of-ways and in parks and, sometimes, assist in the removal of waste from illegal dumpsites.

- PRIDE Crew “common litter” collected in 2013 (in pounds): 23,268
- PRIDE Crew hours worked in 2013: 936 hours
- PRIDE Crew miles traveled in 2013: 375 miles

B22**Activity: Household Hazardous Waste Program****Date: 05/01/2013 - 10/30/2013**

Household Hazardous Waste Recycling Events are held weekly from May to October and are sponsored by Butler County's Solid Waste Management District. The 2013 events resulted in 79.13 tons of household hazardous waste collected for safe processing, disposal, or recycling. Total number of participants was 4,397.

B23**Mobile Household Hazardous Waste Drop Off Collection Events****Date: 04/20/2013 & 10/26/2013**

Mobile Household Hazardous Waste Recycling Events. held in April and October. Were sponsored by Butler County's Solid Waste Management

District Middleown, Middletown high School – 27 tons of HHW collected; 523 participants.

Hamilton, Miami University – 16.3 tons of HHW collected; 237 participants.

B24**Activity: Curbside Freon Appliance Collection Program****Date: 04/01/2013 – 10/30/2013**

Curbside freon appliance collection is sponsored by Butler County's Solid Waste Management District. The 2013 program resulted in the collection of 49.2 tons of freon containing appliances from 627 participating households.

B25**Activity: Tire Collection at Ross High School****Date: 11/02/2013**

Tire collection is sponsored by Butler County's Solid Waste Management District. The November event

held at the Ross Township High School resulted in the collection of 211.7 tons of tires and 311 people participated.

B26

Activity: Webcasts Series – Watershed & Stormwater Management

Dates: 02/13/2013; 03/13/2013; 04/17/2013; 05/15/2013; 06/19/2013; 09/18/2013

In an effort to provide educational opportunities about stormwater and watershed management issues, the Butler County Storm Water District hosted a variety of webcast seminars produced by the Center for Watershed Protection. The topics covered included: Good Housekeeping and Non-Structural BMPs, Smart Stormwater Retrofitting in the Urban Environment, Crediting Watershed Practices Towards TMDL Goals, MS4 Audits, Communicating Stormwater with Elected Officials, Combining Grey and Green in Combined Sewer Watersheds. Forty two (42) people took advantage of this opportunity for training and open discussion of storm water management.