



**Division of Surface Water**  
**NPDES Small MS4 General Permit**  
**(OHQ000003) Annual Reporting Form**

**Instructions for completing this form**

- OHQ000003 requires that this form be used when submitting annual reports. You may request approval to use your own reporting format.
- Annual Reports are due annually on or before April 1st.
- Complete the form and sign and date the certification statement below
- If more space is needed than is provided, identify within the provided space that Attachment A, B, C, etc. has been attached.
- If an item of the form is not applicable for your program (such as street sweeping), fill in N/A in the space provided.
- Do not include attachments such as brochures, newspaper clips, sign-in sheets, etc. related to your program with this form.  
 You only need to summarize these within this report. These records must be filed and will be needed during program audits.
- When complete, submit this Annual Report form to the following address:  
 Ohio Environmental Protection Agency  
 Division of Surface Water  
 Storm Water Program-Small MS4  
 P.O. Box 1049  
 Columbus, Ohio 43216-1049

**General Information**

|  |  |   |                        |
|--|--|---|------------------------|
| <b>Small MS4 Annual Report for Year:</b> 2017      |  | <b>Ohio EPA Facility Permit Number:</b> 1GQ00051*CG |                        |
| <b>Name of MS4:</b> Butler County Storm Water Dist |  |   |                        |
| <b>Mailing Address:</b> 1921 FAIRGROVE AVE         |  |   |                        |
| <b>City:</b> HAMILTON                              |  | <b>State:</b> OH                                    | <b>Zip Code:</b> 45011 |
| <b>Country:</b> USA                                |  | <b>County:</b> Butler                               |                        |
| <b>Primary Contact:</b> GREGORY WILKENS            |  | <b>Title:</b> Storm Water Engineer                  |                        |
| <b>Email Address:</b> wilkensg@bceo.org            |  | <b>Phone:</b> (513) 867-5744                        | <b>Fax:</b>            |

Include or attach a Table of Organization. Indicate who (name and contact information) is responsible for overall management and implementation of your program, and if different, each minimum control measure of your program. Identify how development and implementation across multiple positions, agencies and departments occur. Also, identify any Memorandum of Understandings (MOUs) or other such agreements that exist.

**Upload File Name for Table of Organization:** Attachment A - Organizational Chart.pdf

**Certification**

I certify under penalty of law that this document and all attachments were prepared under my direction or supervision in accordance with a system designed to assure that qualified personnel properly gather and evaluate the information submitted. Based on my inquiry of the person or persons who manage the system, or those persons directly responsible for gathering the information, the information submitted is, to the best of my knowledge and belief, true, accurate and complete. I am aware that there are significant penalties for submitting false information, including possibility of fine and imprisonment for knowing violations.

|   |               |
|---|---------------|
| <b>Applicant Name (printed or typed):</b> | <b>Title:</b> |
| <b>Signature:</b>                         | <b>Date:</b>  |

**PUBLIC EDUCATION AND OUTREACH**

**Estimate Your Permit Area of Total Population:** 144795

| BMP (mechanism)                    | Responsible Party                  | Measurable Goal  | Theme or Message                    | Target Audience | % Target Audience | Effective |
|------------------------------------|------------------------------------|--|-------------------------------------|-----------------|-------------------|-----------|
| Regional Storm Water Collaborative | Butler County Storm Water District | Annually prepare at least one Press Release Packet and distribute to local media | Watershed Awareness & Water Quality | General Public  | 51                | Yes       |

Summary of Results: The Regional Storm Water Collaborative utilizes mass media and shared resources in order to raise awareness concerning environmental quality issues in the Ohio River Valley. By leveraging joint resources, our alliance is capable of reaching regional audiences with a consistent message in the most economical and efficient manner possible. The Butler County Storm Water District, is an active founding member of the Regional Storm Water Collaborative.

Comments: Television:

WLWT - Channel 5:

The Collaborative partnered with WLWT in 2016. We purchased 93 spots that had a reach of 868,900 with 2,759,000 impressions. The video was titled "Slow it Down & Soak It Up" and encouraged the viewers to install BMP's to reduce runoff and erosion.

YouTube:

Produced 2 videos.

913 views and were viewed for 1637 minutes.

The videos were entitled "Slow It Down & Soak It Up With Rain Barrels" and "Slow It Down & Soak It Up With Rain Gardens".

WEBSITE:

[www.savelocalwaters.org](http://www.savelocalwaters.org)

18,321 Page views

9,411 Session

6,419 Users

SOCIAL MEDIA: Facebook

1,336 Page likes

105,369 Impressions

69,016 Users

Twitter

570 Tweets

442 Following

301 Followers

8,400 Impressions

EVENTS:

The Rain Barrel Art Project is Save Local Waters's signature program. This program invites local artists of all levels to paint our 50 Rain Barrels provided by the Metropolitan Sewer District.

These Rain Barrels are then displayed at the Cincinnati Zoo for a period of 3 weeks. During these weeks tens of thousands interact and view these Rain Barrels. At the end of the Display period the Rain Barrels are auctioned off during the Zoo's Party for the Planet. Here are some highlights from last year's project:

↳ News Coverage: 4 Local and National News Outlets

↳ Entries Submitted: 108

↳ Rain Barrels Painted: 50

↳ Schools/Universities Participated: 52

↳ Private Artists and Businesses: 56

↳ Attendance during Rain Barrel Art Project Display: 100,000+

↳ Rain Barrel Volunteers - 35

WORKSHOPS:

Rain Barrel Art Project Workshop ; 54 attendees

Post Construction Stormwater BMP Selection & Design for Public Transportation Projects ; 77 attendees

Southwest Ohio & Northern Kentucky Erosion Control & Stormwater Field Day; 160 attendees

|                                     |   |   |                                     |                       |    |     |
|-------------------------------------|---|---|-------------------------------------|-----------------------|----|-----|
| Education Program for Local Schools | Butler Soil & Water Conservation District | Adopt and Distribute K-12 Water Curricula Program | Watershed Awareness & Water Quality | Students: grades K-12 | 51 | Yes |
|-------------------------------------|---|---|-------------------------------------|-----------------------|----|-----|

Summary of Results: 245 classroom programs reached 5,015 students and 490 adults.

Comments: This year the Butler Soil and Water Conservation District conducted 245 education programs within NPDES Phase II affected areas in Butler County. The Butler Soil and Water Conservation District offers programs and resources to local schools/groups. Full day workshops and introductory programs for the following programs are available: Project WET (Water Education for Teachers), Project WILD Aquatics, stream walks, stream monitoring, and On the Trail of Non-Point Pollution Sources.

|          |                                    |  |                                      |                                    |    |     |
|----------|------------------------------------|--|--------------------------------------|------------------------------------|----|-----|
| Webcasts | Butler County Storm Water District | Host at least one educational storm water webcast and document the number of people in attendance during the webcast presentation. | Storm Water and Watershed Management | General Public and MS4 Communities | 51 | Yes |
|----------|------------------------------------|--|--------------------------------------|------------------------------------|----|-----|

Summary of Results: In an effort to provide educational opportunities about storm water and watershed management issues, the Butler County Storm Water District hosted a variety of webcast seminars produced by the Center for Watershed Protection. The topics covered included Better Site Design; Contaminants of Concern; Modeling for Water Quality; Nutrient Trading, Stream Restoration; and Urban Trees. Forty-six (46) people took advantage of this opportunity for training and open discussion of storm water management.

Comments:

**PUBLIC EDUCATION & OUTREACH**

*Summarize activities you plan to undertake during the next reporting cycle.*

| BMP (mechanism)                     | Responsible Party                         | Measurable Goal                      | Theme or Message  | Target Audience      | % Target Audience | Proposed Schedule   |
|-------------------------------------|---|--------------------------------------|---|----------------------|-------------------|---|
| Education Program for Local Schools | Butler Soil & Water Conservation District | Provide K-12 Water Curricula Program | Various themes which may include, and are not limited to; water quality, litter prevention, waste reduction, recycling, conservation, environmental stewardship and pollution reduction | School Children K-12 | 51                | Provide programs as requested throughout the school year. |

Summary of Planned Activities: Provide a variety of educational programs to school districts within Butler County.

Comments: n/a

|                                    |                                    |  |   |                |    |   |
|------------------------------------|------------------------------------|--|---|----------------|----|---|
| Regional Storm Water Collaborative | Butler County Storm Water District | Annually prepare at least one Press Release Packet and distribute to local media | Various themes which may include, and are not limited to; water quality, litter prevention, waste reduction, recycling, conservation, environmental stewardship and pollution reduction | General Public | 51 | Will vary on number of participating municipalities and the type of media selected. |
|------------------------------------|------------------------------------|--|---|----------------|----|---|

Summary of Planned Activities: As a member of the Regional Storm Water Collaborative, contract with various local mass media networks to provide billboard, radio and/or television spots as Public Service Announcements

|               |                                    |  |                                      |                                    |    |                                      |
|---------------|------------------------------------|--|--------------------------------------|------------------------------------|----|--------------------------------------|
| Comments: n/a |                                    |  |                                      |                                    |    |                                      |
| Webcasts      | Butler County Storm Water District | Host at least one educational storm water webcast and document the number of people in attendance during the webcast presentation. | Storm Water and Watershed Management | General Public and MS4 Communities | 51 | Once per year during the permit term |

Summary of Planned Activities: The Butler County Storm Water District will annually sponsor or host an educational storm water webcast that is produced and presented by other agencies. Notification about opportunities to view the webcast for free at the Butler County Engineer's Office will be provided prior to the webcast.

Comments: n/a

## PUBLIC INVOLVEMENT AND PARTICIPATION

| BMP (mechanism)           | Responsible Party                  | Measurable Goal  | Theme or Message                                  | Target Audience             | Estimate Of People Participated | Effective |
|---------------------------|------------------------------------|--|---|-----------------------------|---------------------------------|-----------|
| Butler County Stream Team | Butler County Storm Water District | Facilitate and oversee one Stream Clean-Up and Monitoring Program each year. | Volunteers collect data and monitor stream health | General Public and Students | 51                              | Yes       |

Summary of Results: In 2017, the Stream Team sampled 77 stream locations monthly. Samples were collected by 31 field volunteers and analyzed in the lab on Miami University's campus by volunteers. The number of volunteers who participated in the laboratory was 20.

In addition to sampling, the Stream team conducted the following activities:

### WEBSITE:

[www.butlercountystreamteam.org](http://www.butlercountystreamteam.org)

Actual web visitors: 663 with 1,557 page views.

NEWSLETTER: 12 issues distributed to an average of 245 recipients each time.

ANNUAL TRAINING BREAKFAST: 48 people attended training for Level 2 Credible Data sampling requirements. Reviewed data summary for 2016 sampling season.

MACRO SAMPLING: 26 people attended a two part training exercise consisting of classroom instruction and in-field demonstrations.

CANOE TRIP: 15 people gathered to canoe the Great Miami River to learn about water quality sampling and river ecology.

Comments: The Butler County Storm Water District teamed up with Miami University Institute for Environmental Science and the Butler Soil and Water Conservation District to promote and implement a monthly volunteer stream monitoring program to assess local stream quality. A protocol for the lab and field procedures was approved by the Ohio EPA Credible Data Program for sampling year 2017. The Stream Team sampled 77 locations a month and had 31 field volunteers and 20 lab volunteers. When samples are returned to the lab, they are analyzed for six parameters: nitrates, phosphates, bacteria, conductivity, total dissolved solids, pH, and turbidity.

For more information concerning the Butler County Stream Team, visit : [www.butlercountystreamteam.org](http://www.butlercountystreamteam.org)

|                                      |                                    |   |                   |                |     |     |
|--------------------------------------|------------------------------------|---|-------------------|----------------|-----|-----|
| Clean Sweep of the Great Miami River | Butler County Storm Water District | Facilitate and oversee one Stream Clean-Up and Monitoring Program each year | Litter Prevention | General Public | 375 | Yes |
|--------------------------------------|------------------------------------|---|-------------------|----------------|-----|-----|

Summary of Results: 375 participants in Butler and Hamilton County; (692 participants overall.)

WEBSITE: www.greatmiamirivercleanup.org  
651 visitors

Comments: On October 28th, in the Butler and Hamilton County area, 375 participants collected 9.47 tons of litter and 60 tires at sites long the Great Miami River. Overall six hundred ninety-two (692) volunteers participated watershed wide in an effort to clean up the entire 170 mile river.

|  |                                    |  |  |                |     |     |
|--|------------------------------------|--|--|----------------|-----|-----|
| Storm Water Hotline, Database and Response Program | Butler County Storm Water District | Document Complaints Received and Follow up in a timely manner. | Illicit Discharge, Illegal Dumping; Drainage; Sanitary; HSTS; Erosion; Other | General Public | 251 | Yes |
|--|------------------------------------|--|--|----------------|-----|-----|

Summary of Results: The Butler County Storm Water District created a database and response program to document citizen inquiries/complaints and accurately record contact information. The database and response program recorded over 251 customer inquiries for the year 2017. The database tracks information specific to the customers address, method of contact, nature of inquiry, and detail of inquiry/complaint resolution.

Comments: n/a

|                      |   |  |                              |                               |    |     |
|----------------------|---|--|------------------------------|-------------------------------|----|-----|
| Storm Drain Labeling | Butler Soil & Water Conservation District | Document the number of storm drains labeled annually, and document the number of neighborhood volunteers who assist with the storm drain labels. | Hazards of Illicit Discharge | Homeowners and General Public | 35 | Yes |
|----------------------|---|--|------------------------------|-------------------------------|----|-----|

Summary of Results: Six separate labeling events were planned for the 2017 permit year. The five events resulted in the installation four hundred thirteen (347) storm drain labels on catch basins and the distribution of illicit discharge information to houses by thirty-five (35) community volunteers.

Comments: Storm drain labels are simple and effective best management practices to prevent non-point source pollution from entering waterways in our community and those downstream. The labels are intended to make urban and suburban homeowners think twice before dumping material down the storm sewers and into rivers, streams, and ponds in their neighborhoods.

**PUBLIC INVOLVEMENT AND PARTICIPATION**

*Summarize activities you plan to undertake during the next reporting cycle.*

| BMP (mechanism)                                    | Responsible Party                  | Measurable Goal  | Theme or Message   | Target Audience | Estimate of People to Participate | Proposed Schedule |
|--|------------------------------------|--|--|-----------------|-----------------------------------|-------------------|
| Storm Water Hotline, Database and Response Program | Butler County Storm water District | Document Complaints Received and Follow up in a timely manner. | Illicit Discharge, Illegal Dumping; Drainage; Sanitary; HSTS; Erosion; Other | General Public  | 100                               | Daily             |

Summary of Planned Activities: Track information specific to the customers address, method of contact, nature of inquiry, and detail of inquiry/complaint resolution. Respond and resolve complaint in a timely manner.

Comments: n/a

|                           |                                    |  |   |                             |    |         |
|---------------------------|------------------------------------|--|---|-----------------------------|----|---------|
| Butler County Stream Team | Butler County Storm Water District | Facilitate and oversee one Stream Clean-Up and Monitoring Program each year. | Volunteers collect data and monitor stream health | General Public and Students | 50 | Monthly |
|---------------------------|------------------------------------|--|---|-----------------------------|----|---------|

Summary of Planned Activities: Meet monthly with volunteer stream monitors to assess local stream quality.

Comments: n/a

|                      |                                    |  |                              |                               |    |  |
|----------------------|------------------------------------|--|------------------------------|-------------------------------|----|--|
| Storm Drain Labeling | Butler County Storm Water District | Document the number of storm drains labeled annually, and document the number of neighborhood volunteers who assist with the storm drain labels. | Hazards of Illicit Discharge | Homeowners and General Public | 20 | Throughout the year as weather permits |
|----------------------|------------------------------------|--|------------------------------|-------------------------------|----|--|

Summary of Planned Activities: Utilize neighborhood volunteers to install storm drain labels and distribute information to residential properties on hazards of illicit discharge

Comments:

|                                      |                                    |  |  |                |     |        |
|--------------------------------------|------------------------------------|--|--|----------------|-----|--------|
| Clean Sweep of the Great Miami River | Butler County Storm Water District | Facilitate and oversee one Stream Clean-Up and Monitoring Program each year. | Litter Prevention Illicit Discharge, Illegal Dumping; Drainage; Sanitary; HSTS; Erosion; Other | General Public | 300 | Annual |
|--------------------------------------|------------------------------------|--|--|----------------|-----|--------|

Summary of Planned Activities: Coordinate clean-up of Great Miami River at multiple sites in Butler County.

Comments: n/a

### ILLICIT DISCHARGE DETECTION AND ELIMINATION (IDDE)

| BMP (mechanism)                         | Responsible Party                  | Measurable Goal  | Completed | Cite Local Code(s) Being Used (If available, web link for code(s))                                | Effective |
|---|------------------------------------|--|-----------|---|-----------|
| Ordinance or Other Regulatory Mechanism | Butler County Storm Water District | Establish Illicit Discharge Ordinance for District; implement and enforce. | Yes       | Butler County Illicit Discharge Detection and Elimination Regulations (Resolution No. 09-11-1954) | Yes       |

Summary of Results or Activities: On November 12, 2009, the Butler County Board of Commissioners signed and adopted the Illicit Discharge Detection and Elimination Regulations. The final draft is available on the District website: [www.stormwaterdistrict.org](http://www.stormwaterdistrict.org)

Comments: n/a

| BMP (mechanism)        | Responsible Party                  | Measurable Goal  | Completed | Summary of Activities or Updates   | Effective |
|------------------------|------------------------------------|--|-----------|--|-----------|
| Storm Sewer System Map | Butler County Storm Water District | Document any new information added to the storm sewer system mapping database. | Yes       | Using "As-Built" data originating from the 1970's and forward, 100% of known sewer systems have been mapped in the Phase II affected areas within the county. Each year as new development occurs throughout the District, the sewer map will be reviewed and updated. | Yes       |

Comments: n/a

| BMP (mechanism) | Responsible Party | Measurable Goal | Completed | Summary of Activities or Updates | Effective |
|-----------------|-------------------|-----------------|-----------|----------------------------------|-----------|
|-----------------|-------------------|-----------------|-----------|----------------------------------|-----------|

|                       |                                    |  |     |   |     |
|-----------------------|------------------------------------|--|-----|---|-----|
| HSTS Mapping and List | Butler County Storm Water District | Document any new or updated HSTS information that is added to the storm sewer system mapping database. | Yes | The Butler County Storm Water District researched archived HSTS records held by the Butler County Health Department. The information can be viewed graphically with the use of the county GIS system. A map has been made identifying existing HSTS within the District. Updates are made on an annual basis. All new applications for HSTS will be added to that data. | Yes |
|-----------------------|------------------------------------|--|-----|---|-----|

Comments: n/a

| BMP (mechanism) | Responsible Party                  | Measurable Goal                 | Completed | Summary of Activities or Updates   | Effective |
|-----------------|------------------------------------|---------------------------------|-----------|--|-----------|
| IDDE Plan       | Butler County Storm Water District | Develop and implement IDDE plan | Yes       | By creating and adopting an illicit discharge regulation, the Storm Water District has established the methods and standards for best management practices (BMPs) for controlling the introduction of pollutants into the municipal separate storm sewer system. The regulation establishes the authority and means by which the District will carry out inspection, monitoring and enforcement procedures necessary to ensure compliance. The Butler County Storm Water District created a database and response program to document and accurately record contact information regarding spill reports, illicit discharges, illegal dumping, and citizen complaints. The information obtained from the hotline and database can be mapped with the use of the county GIS system. Problem areas can be viewed graphically based on type, location, and frequency. This database is updated on a regular basis to help identify and resolve problem areas | Yes       |

Comments: n/a

| BMP (mechanism)                   | Responsible Party                  | Measurable Goal   | Completed | Total # of Outfalls | # of Outfalls Screened | # of Dry-Weather Flows Identified | # of Identified Illicit Discharges | # of Eliminated Illicit Discharges | Effective |
|-----------------------------------|------------------------------------|---|-----------|---------------------|------------------------|-----------------------------------|------------------------------------|------------------------------------|-----------|
| Dry-Weather Screening of Outfalls | Butler County Storm Water District | Track the location and number of outfalls screened for illicit discharges during dry weather. | Yes       | 519                 | 519                    | 65                                | 0                                  | 0                                  | Yes       |

Comments: The source for all 65 dry weather flows was determined to be either groundwater or landscape irrigation. None of the 65 dry weather flows showed any indication of illicit discharge.

| BMP (mechanism) | Responsible Party | Measurable Goal | Completed | Summary of Planned Activities | Comments | Effective |
|-----------------|-------------------|-----------------|-----------|-------------------------------|----------|-----------|
|-----------------|-------------------|-----------------|-----------|-------------------------------|----------|-----------|



No records found

**ILLICIT DISCHARGE DETECTION & ELIMINATION (IDDE)**

*Summarize activities you plan to undertake for the next reporting cycle.*

| BMP (mechanism)                         | Responsible Party                  | Measurable Goal  | Summary of Planned Activities   | Proposed Schedule |
|---|------------------------------------|--|---|-------------------|
| IDDE Plan                               | Butler County Storm Water District | Continue to implement IDDE plan  | Review and update plan as needed.   | Annually          |
| Comments:                               |                                    |  |   |                   |
| Dry-Weather Screening of Outfalls       | Butler County Storm Water District | Track the location and number of outfalls screened for illicit discharges during dry weather.          | All outfalls will be screened at least once during the permit term.                                     | Annually          |
| Comments:                               |                                    |  |   |                   |
| Ordinance or Other Regulatory Mechanism | Butler County Storm Water District | Continue to implement and enforce IDDE regulation.   | Review IDDE regulation and update as needed.  | Annually          |
| Comments: n/a                           |                                    |  |   |                   |
| HSTS Mapping                            | Butler County Storm Water District | Document any new or updated HSTS information that is added to the storm sewer system mapping database. | Updates are made on an annual basis. All new applications for HSTS will be added to that data.          | Annually          |
| Comments: n/a                           |                                    |  |   |                   |
| Storm Sewer System Map                  | Butler County Storm Water District | Document any new information added to the storm sewer system mapping database.                         | Each year as new development occurs throughout the District the sewer map will be reviewed and updated. | Annually          |

Comments: n/a

**CONSTRUCTION SITE RUNOFF CONTROL**

| BMP (mechanism)                         | Responsible Party                  | Measurable Goal   | Completed | Cite Local Code(s) Being Used (If available, web link for code(s)) | Effective |
|---|------------------------------------|---|-----------|--|-----------|
| Ordinance or Other Regulatory Mechanism | Butler County Storm Water District | Compliance with NPDES Construction General Permit requirements. | Yes       | Butler County Subdivision Regulations                              | Yes       |

Summary of Results or Activities: The Butler County Subdivision regulations were revised in 2011. The revisions were adopted on January 12, 2012. The revisions covered a number of non-point source pollution topics including construction site storm water discharges and groundwater pollution potential.

Comments: n/a

| BMP (mechanism)                           | Responsible Party                  | Measurable Goal   | Completed | Standards Being Used   | Effective |
|---|------------------------------------|---|-----------|--|-----------|
| Sediment and Erosion Control Requirements | Butler County Storm Water District | Compliance with NPDES Construction General Permit requirements. | Yes       | Erosion and Sediment Control Regulations: Article VII of Butler County Subdivision Regulations | Yes       |

Summary of Results or Activities: Erosion and Sediment Control Regulations: Article VII were adopted as part of the of the Butler County Subdivision regulations on March 12, 2007. The changes were effective during the Summer of 2007.

Comments: n/a

| BMP (mechanism)   | Responsible Party                  | Measurable Goal           | Completed | # of Applicable Sites Requiring Plans | # of Plans Reviewed | Effective |
|-------------------|------------------------------------|---------------------------|-----------|---------------------------------------|---------------------|-----------|
| Complaint Process | Butler County Storm Water District | Respond to all complaints | Yes       | 5                                     | 5                   | Yes       |

Summary of Results or Activities: Responded to and resolved all complaints.

Comments: n/a

| BMP (mechanism)             | Responsible Party                  | Measurable Goal                      | Completed | # of Sites Requiring Plans | # of Plans Reviewed | Effective |
|-----------------------------|------------------------------------|--------------------------------------|-----------|----------------------------|---------------------|-----------|
| Site Plan Review Procedures | Butler County Storm Water District | Review all site plans for compliance | Yes       | 536                        | 536                 | Yes       |

Summary of Results or Activities: Made plan comments to ensure that all sites were in compliance with regulations.

Comments:

| BMP (mechanism)            | Responsible Party                  | Measurable Goal                             | Completed | # of Applicable Sites | # of Sites Inspected | Average Frequency | Effective |
|----------------------------|------------------------------------|---|-----------|-----------------------|----------------------|-------------------|-----------|
| Site Inspection Procedures | Butler County Storm Water District | Inspect all applicable sites for compliance | Yes       | 536                   | 3532                 | 294               | Yes       |

Summary of Results or Activities: Inspected active sites for compliance with Erosion and Sediment control Regulations

Comments: Residential sites are inspected every two weeks and commercial sites are inspected monthly.

Upload File Name(s) for Applicable Sites: ESC inspection report\_2017.pdf

| BMP (mechanism)        | Responsible Party                  | Measurable Goal                     | Completed | # of Violation Letters | # of Enforcement Actions | Effective |
|------------------------|------------------------------------|-------------------------------------|-----------|------------------------|--------------------------|-----------|
| Enforcement Procedures | Butler County Storm Water District | Ensure compliance with regulations. | Yes       | 0                      | 0                        | Yes       |

Summary of Results or Activities: Violations resolved. Enforcement actions unnecessary.

Comments:

| BMP (mechanism) | Responsible Party | Measurable Goal | Completed | Measurements | Effective |
|-----------------|-------------------|-----------------|-----------|--------------|-----------|
|-----------------|-------------------|-----------------|-----------|--------------|-----------|

No records found

## CONSTRUCTION SITE RUNOFF CONTROL

*Summarize activities you plan to undertake during the next reporting cycle.*

| BMP (mechanism)                         | Responsible Party                  | Measurable Goal   | Summary of Planned Activities  | Proposed Schedule |
|---|------------------------------------|---|--|-------------------|
| Ordinance or Other Regulatory Mechanism | Butler County Storm Water District | Compliance with NPDES Construction General Permit requirements. | Review Federal and State rule changes and revise county regulations. | As needed.        |

Comments:

|                   |                                    |                            |   |            |
|-------------------|------------------------------------|----------------------------|---|------------|
| Complaint Process | Butler County Storm Water District | Respond to all complaints. | Respond to all complaints and ensure compliance with all regulations. | As needed. |
|-------------------|------------------------------------|----------------------------|---|------------|

| Comments:   |  |  |   |  |                     |           |
|---|--|--|---|--|---------------------|-----------|
| Sediment and Erosion Control Requirements   | Butler County Storm Water District                   | Compliance with NPDES Construction General Permit requirements.  | Review Federal and State rule changes and revise county regulations.              | As needed.   |                     |           |
| Comments:   |  |  |   |  |                     |           |
| Site Inspection Procedures  | Butler County Storm Water District                   | Inspect all applicable sites for compliance  | Inspect active sites for compliance with Erosion and Sediment control Regulations | As needed.   |                     |           |
| Comments:   |  |  |   |  |                     |           |
| Enforcement Procedures  | Butler County Storm Water District                   | Ensure compliance with regulations.  | Enforce compliance on all active sites.   | As needed.   |                     |           |
| Comments:   |  |  |   |  |                     |           |
| <b>POST-CONSTRUCTION STORM WATER MANAGEMENT IN NEW DEVELOPMENT AND REDEVELOPMENT</b>  |  |  |   |  |                     |           |
| BMP (mechanism)   | Responsible Party                                    | Measurable Goal  | Completed   | Cite Local Code(s) Being Used (If available, web link for code(s))   | Effective           |           |
| Ordinance or Other Regulatory Mechanism   | Butler County Storm Water District and Co-Permittees | Comply with post-construction requirements for NPDES phase II permit. (ie. Provide for open space, minimization of impervious area, protection of natural resources, etc.) | Yes   | Butler County Subdivision Regulations Butler County Flood Damage Prevention Regulations Butler County Zoning Code Township Zoning Code (Fairfield, Liberty, St. Clair, Wayne, West Chester) City of Trenton Subdivision Regulations and Zoning | Yes                 |           |
| Summary of Results or Activities: All documents have been updated to include post construction requirements. Documents are reviewed as needed to ensure compliance. |  |  |   |  |                     |           |
| Comments:   |  |  |   |  |                     |           |
| BMP (mechanism)   | Responsible Party                                    | Measurable Goal  | Completed   | Structural and/or Non-Structural Standards Being Used  | Effective           |           |
| Post-Construction Requirements  | Butler County Storm Water District and Co-Permittees | Comply with post-construction requirements for NPDES phase II permit.  | Yes   | Ohio EPA Construction General Permit requirements ODNR Rainwater and Land Development Manual ODOT Location and Design Manual Also, see above document list.  | Yes                 |           |
| Summary of Results or Activities: All documents have been updated to include post construction requirements. Documents are reviewed as needed to ensure compliance. |  |  |   |  |                     |           |
| Comments:   |  |  |   |  |                     |           |
| BMP (mechanism)   | Responsible Party                                    | Measurable Goal  | Completed   | # of Applicable Sites Requiring Plans  | # of Plans Reviewed | Effective |
| Site Plan Review Procedures   | Butler County Storm Water District                   | Review all sites required to obtain Ohio EPA Construction General Permit   | Yes   | 11   | 11                  | Yes       |
| Summary of Results or Activities: Made plan comments to ensure that all sites were in compliance with regulations.  |  |  |   |  |                     |           |
| Comments:   |  |  |   |  |                     |           |

| BMP (mechanism)            | Responsible Party                  | Measurable Goal  | Completed | # of Applicable Sites | # of Inspections Performed | Average Frequency | Effective |
|----------------------------|------------------------------------|--|-----------|-----------------------|----------------------------|-------------------|-----------|
| Site Inspection Procedures | Butler County Storm Water District | Inspect all sites that require post construction BMPs (ie. greater than 5 acres) | Yes       | 11                    | 1                          | 1                 | Yes       |

Summary of Results or Activities: Inspected active sites for compliance with Erosion and Sediment Control Regulations.

Comments: Site inspections are performed monthly.

| BMP (mechanism)        | Responsible Party                  | Measurable Goal                          | Completed | # of Violation Letters | # of Enforcement Actions | Effective |
|------------------------|------------------------------------|--|-----------|------------------------|--------------------------|-----------|
| Enforcement Procedures | Butler County Storm Water District | Ensure compliance with E&SC regulations. | Yes       | 0                      | 0                        | Yes       |

Summary of Results or Activities: Enforced compliance on all active sites.

Comments:

| BMP (mechanism)                | Responsible Party                  | Measurable Goal  | Completed | # of Sites Requiring Plans/Agreements | # of Plans Developed/Agreements in Place | Effective |
|--------------------------------|------------------------------------|--|-----------|---------------------------------------|--|-----------|
| Long-Term O&M Plans/Agreements | Butler County Storm Water District | Ensure that facilities are either publicly owned and operated or a Home Owners Association or a Property Owners Association is established | Yes       | 6                                     | 6  | Yes       |

Summary of Results or Activities: The Butler County Engineers Office coordinates and plans inspections of all publicly owned and operated drainage structures within the District on an annual basis. Facilities and structures have maintenance performed as necessary based upon inspection results. A report is issued annually to the County commissioners on all inspection and maintenance activities.

Comments:

| BMP (mechanism)  | Responsible Party | Measurable Goal | Completed | Measurement 1 | Measurement 2 | Effective |
|------------------|-------------------|-----------------|-----------|---------------|---------------|-----------|
| No records found |                   |                 |           |               |               |           |

## POST-CONSTRUCTION STORM WATER MANAGEMENT IN NEW DEVELOPMENT AND REDEVELOPMENT

Summarize activities you plan to undertake for the next reporting cycle.

| BMP (mechanism)                         | Responsible Party                  | Measurable Goal  | Summary of Planned Activities   | Proposed Schedule |
|---|------------------------------------|--|---|-------------------|
| Ordinance or Other Regulatory Mechanism | Butler County Storm Water District | Comply with post-construction requirements for NPDES phase II permit. (ie. Provide for open space, minimization of impervious area, protection of natural resources, etc.) | All documents will be updated to include post construction requirements. Documents are reviewed as needed to ensure compliance. | Annually          |

Comments:

|                                |                                    |   |   |          |
|--------------------------------|------------------------------------|---|---|----------|
| Post-Construction Requirements | Butler County Storm Water District | Comply with post-construction requirements for NPDES phase II permit. | All documents will be updated to include post construction requirements. Documents are reviewed as needed to ensure compliance. | Annually |
|--------------------------------|------------------------------------|---|---|----------|

Comments:

|                                |                                    |   |   |          |
|--------------------------------|------------------------------------|---|---|----------|
| Site Plan Review Procedures    | Butler County Storm Water District | Review all sites required to obtain Ohio EPA Construction General Permit  | Make plan comments to ensure that all sites were in compliance with regulations.  | Annually |
| Comments:                      |                                    |   |   |          |
| Site Inspection Procedures     | Butler County Storm Water District | Inspect all sites that require post construction BMPs (ie. greater than 5 acres)  | Inspect active sites for compliance with Erosion and Sediment Control Regulations.  | Annually |
| Comments:                      |                                    |   |   |          |
| Enforcement Procedures         | Butler County Storm Water District | Ensure compliance with E&SC regulations.  | Enforce compliance on all active sites.   | Annually |
| Comments:                      |                                    |   |   |          |
| Long-Term O&M Plans/Agreements | Butler County Storm Water District | Ensure that facilities are either publicly owned and operated or a Home Owners Association or a Property Owners Association is established. | The Butler County Engineers Office will continue to coordinate and plan inspections of all publicly owned and operated drainage structures within the District on an annual basis. Facilities and structures have maintenance performed as necessary based upon inspection results. A report is issued annually to the County commissioners on all inspection and maintenance activities. | Annually |

Comments:

**POLLUTION PREVENTION/GOOD HOUSEKEEPING FOR MUNICIPAL OPERATIONS**

| BMP (mechanism)             | Responsible Party                  | Measurable Goal   | Completed | Topic(s)  | Targeted Audience   | # of Employees Attended | Effective |
|-----------------------------|------------------------------------|---|-----------|---|---------------------|-------------------------|-----------|
| Employee Training Program 1 | Butler County Storm Water District | Document the number of staff who receive training each year, with a goal of training all employees at each municipal facility at least once during the permit term. | Yes       | Varied by facility. Topics include: Post Construction BMPs; Spill Identification and Emergency response; SPCC; Construction Site Runoff Control; Snow and Ice Control | Municipal Employees | 139                     | Yes       |

Summary of Activity: Reviewed PPGHP and training video.

Comments:

| BMP (mechanism) | List of Municipal Facilities Subject to Program | O&M Procedures Developed? | # of Inspections Performed | Frequency of Inspections |
|-----------------|---|---------------------------|----------------------------|--------------------------|
|-----------------|---|---------------------------|----------------------------|--------------------------|

|                             |   |  |   |          |
|-----------------------------|---|--|---|----------|
| Municipal Facilities        | 1. Butler County Engineer's Office<br>2. City of Trenton<br>3. Fairfield Township ( Morris Road )<br>4. Fairfield Township (Tylersville Road)<br>5. Hanover Township<br>6. Lemon Township<br>7. Liberty Township<br>8. Madison Township<br>9. Ross Township<br>10. St. Clair Township<br>11. Village of New Miami<br>12. Village of Seven Mile<br>13. Wayne Township<br>14. West Chester Township | Yes  | 14  | Annually |
| BMP (mechanism)             | Summarize Maintenance Activities and Schedules  |  | Summarize Activities Performed  |          |
| MS4 Maintenance             | Maintenance activities are performed on an as-needed basis.   | The Butler County Engineers Office coordinates and plans inspections of all drainage structures within the District on an annual basis. Facilities and structures have maintenance performed as necessary based upon inspection results. A report is issued annually to the County commissioners on all inspection and maintenance activities. |   |          |
| BMP (mechanism)             | Procedures Developed?   | Document Amounts of Wastes Properly Disposed   |   |          |
| Disposal of Wastes          | Yes   | 1,577 gallons of automotive fluids recycled ( i.e. Transmission fluid, gear oil, engine oil )<br>Tires: 2,927<br>Batteries: 87   |   |          |
| BMP (mechanism)             | Covered?  | Tons Used  | Summarize Measures Taken to Minimize Usage  |          |
| Road Salt                   | Yes   | 8194 Tons  | Salt usage minimized through the use of Standard Operating Procedures (SOPs) for snow and ice control. Further reductions are achieved with the use of the automated brine maker and distribution tanks for pretreatment. Also investigated and experimented with beet juice as salt alternative. |          |
| BMP (mechanism)             | Procedures Developed?   | Gallons Used   | Summarize Measures Taken to Minimize Usage  |          |
| Pesticide & Herbicide Usage | Yes   | 16305 Gallons  | Butler County Engineers Office has developed and implemented Standard Operating Procedures (SOPs) for pesticide and herbicide application. All employees that participate in pesticide and herbicide application are licensed by the Ohio Department of Agriculture.                              |          |
| BMP (mechanism)             | Procedures Developed?   | Pounds Used  | Summarize Measures Taken to Minimize Usage  |          |
| Fertilizer Usage            | Yes   | 3440 Pounds  | Application rate set at 5 lbs. per 1000 sq. ft.   |          |
| BMP (mechanism)             | Procedures Developed?   | Document Amount of Material Collected and Properly Disposed  |   |          |
| Street Sweeping             | Yes   | Street sweeping as needed for county bridges and curb & gutter roads. Procedure in place for dewatering and disposal of collected waste. Currently procedures do not include a method to calculate and record the amount of material collected.  |   |          |
| BMP (mechanism)             | Summarize Any New or Existing Flood Management Projects that were Assessed for Impacts on Water Quality   |  |   |          |
| Flood Management Projects   | n/a   |  |   |          |

| BMP (mechanism) | Summary |  |  |  |
|-----------------|---------|--|--|--|
|-----------------|---------|--|--|--|

No records found

**POLLUTION PREVENTION/GOOD HOUSEKEEPING FOR MUNICIPAL OPERATIONS**

*Summarize activities you plan to undertake for the next reporting cycle.*

| BMP (mechanism)             | Responsible Party                  | Measurable Goal                        | Summary of Planned Activities  | Proposed Schedule |
|-----------------------------|------------------------------------|--|--|-------------------|
| Pesticide & Herbicide Usage | Butler County Storm Water District | Minimize pesticide and herbicide usage | Continue to implement implemented Standard Operating Procedures (SOPs) for pesticide and herbicide application. Ensure employees obtain and maintain licensed by the Ohio Department of Agriculture license. | Annually          |

Comments:

|                 |                                    |   |  |          |
|-----------------|------------------------------------|---|--|----------|
| Street Sweeping | Butler County Storm Water District | Properly dispose of and Document Amount of Material Collected | Develop and implement a method to calculate and record the amount of material collected. | Annually |
|-----------------|------------------------------------|---|--|----------|

Comments:

|                           |                                    |   |   |          |
|---------------------------|------------------------------------|---|---|----------|
| Employee Training Program | Butler County Storm Water District | Document the number of staff who receive training each year, with a goal of training all employees at each municipal facility at least once during the permit term. | Continue to implement training component of facility PPGHP. | Annually |
|---------------------------|------------------------------------|---|---|----------|

Comments:

|                                       |                                    |   |   |          |
|---------------------------------------|------------------------------------|---|---|----------|
| List of Facilities Subject to Program | Butler County Storm Water District | List all facilities subject to Program. | Review existing list of facilities subject to program and make changes as needed. | Annually |
|---------------------------------------|------------------------------------|---|---|----------|

Comments:

|                 |                                    |   |  |          |
|-----------------|------------------------------------|---|--|----------|
| MS4 Maintenance | Butler County Storm Water District | Inspect drainage structures within the District on an annual basis. | Coordinate and plan inspections of drainage structures within the District on an annual basis. Perform maintenance as necessary based upon inspection results. Issue report annually to the County commissioners on all inspection and maintenance activities. | Annually |
|-----------------|------------------------------------|---|--|----------|

Comments:

|                    |                                    |  |              |          |
|--------------------|------------------------------------|--|--------------|----------|
| Disposal of Wastes | Butler County Storm Water District | Gallons of oil properly recycled/recovered | Recycle oil. | Annually |
|--------------------|------------------------------------|--|--------------|----------|

Comments:

|           |                                    |                     |   |          |
|-----------|------------------------------------|---------------------|---|----------|
| Road Salt | Butler County Storm Water District | Minimize salt usage | Minimize salt usage through the use of Snow and Ice control SOPs, use of brine pretreatment system and investigate salt alternatives. | Annually |
|-----------|------------------------------------|---------------------|---|----------|

Comments:

**PROPOSED CHANGES TO YOUR SWMP (IF ANY)**

*Summarize any proposed changes to your SWMP, including changes to any BMPs or any identified measurable goals that apply to the program elements. If you fail to satisfy measurable goals for the reporting year, please explain why.*

**VARIANCES GRANTED (IF ANY)**

*Identify and summarize any variances granted under your storm water program.*

**ADDITIONAL INFORMATION**

*Please add any additional comments or attachments below.*

Attachment "C" is a list that contains activities performed by the Butler County Storm Water District that are not specifically required by permit or listed as part of the District's Storm Water Management Plan.

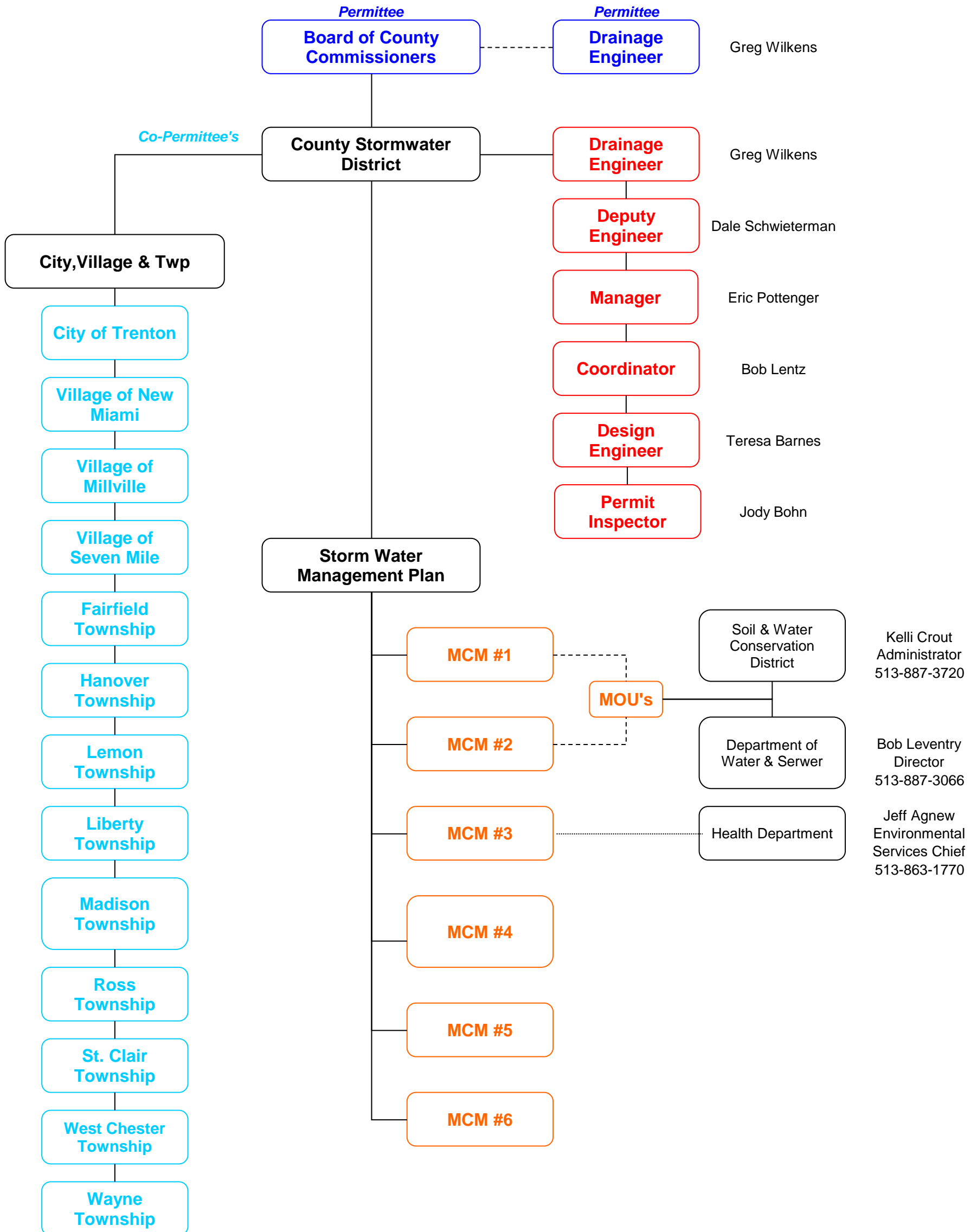
Additional Information attachment(s): Attachment C - 2017 Annual Report -Bonus Activities -Final.doc





# Organizational Chart

## NPDES Phase II



Permittee

Co-Permittee

Storm Water Staff

Minimum Control Measure

**Attachment “C”**  
**Butler County Storm Water District Bonus Activities**

**B1**

**Activity: Watershed Signage**

**Date: 01/01/2017 - 12/31/2017**

The Butler County Storm Water District is involved with watershed awareness and education throughout Butler County. This is accomplished in part by coordinating stream crossing sign installation with public awareness and education programs. In 2017 the existing signage was inventoried and assessed for maintenance needs. No additional signs were installed.

**B2**

**Activity: Mill Creek Watershed Council**

**Date: 01/01/2017 – 12/31/2017**

A representative from the Butler County Storm Water District served on the Board of Trustees and participated in quarterly meetings of the Mill Creek Watershed Council. The purpose of the Mill Creek Watershed Council is to maintain and enhance the asset-value of the Mill Creek by providing resources to the communities and the region to realize lasting benefits. The Mill Creek Watershed Council is a publicly funded, non-profit corporation representing all 37 political jurisdictions in the Mill Creek watershed. The Council acts as a forum for making watershed-based decisions by convening and coordinating meetings and projects related to the improvement of the Mill Creek. Through these forums, the Council invites public input on watershed-related issues. The full council meets quarterly at locations throughout the watershed and creates a quarterly newsletter, Voice of the Mill Creek, that is mailed to approximately 1400 addresses throughout the watershed. Please visit the following website for additional information: <http://www.millcreekwatershed.org/home.html>

**B3**

**Activity: Water Management Association of Ohio & the Ohio Stormwater Association**

**Date: 01/01/2017 - 12/31/2017**

A representative from the Butler County Storm Water District serves on the Board of Directors and attended Ohio Stormwater Association Committee Meetings. The Ohio Stormwater Association is a group of public and private citizens dedicated to advancing the management of stormwater and related natural resources through education, leadership, watershed-based coordination and technical assistance in Ohio. The Ohio Stormwater Association is a not-for-profit, non-political organization. The Ohio Stormwater Association is organized formally as the stormwater division of the Water Management Association of Ohio which maintains a 501(c)4 status. The Ohio Stormwater Association provides educational and networking opportunities for people focused on reducing the negative impacts of stormwater runoff. The Ohio Stormwater Association provides quarterly educational meetings on topics of interest to our members and helps to sponsor the **Ohio Stormwater Conference** being held each spring. The 2017 Ohio Stormwater Conference was held at the Kalahari Convention Center located in Sandusky, Ohio, May 4-6, 2017. The conference had over 800 attendees, 95 exhibitors & sponsors, and over 90 presentations on Stormwater management.

**B4**

**Activity: Classroom Presentation – Butler County Children’s Water Festival**

**Date: 10/13/2017**

The Butler County Water Festival was held October 13, 2017 at Miami University Hamilton. The "Hands on Day of Discovery" was attended by **1,090** fourth, fifth and sixth graders, and over **100 presenters** and volunteers from across Butler County. A representative from the Butler County Storm Water District presented to 5 classrooms of children on the topics of impervious surfaces, non-point source pollution, and storm water runoff. The Butler County Storm Water District served on the festival planning committee and the District also supported the festival financially.

**B5****Activity: Local Emergency Planning Committee (LEPC) Quarterly Meetings****Date: 01/01/2017 – 12/31/2017**

The Butler County Storm Water District is an active participant in the Local Emergency Planning Committee (BCLEPC). The BCLEPC is comprised of members representing several occupational categories: elected local officials, law enforcement, emergency management, fire fighting, first aid, health, local environment; hospital, transportation, electronic media, print media, community groups, facility owners and operators subject to EPCRA, interested citizens and non-elected local officials.

According to the Ohio State Emergency Response Commission (SERC), the LEPC shall prepare local hazardous materials emergency plans that indicate the facilities that use, produce, or store extremely hazardous substances within the county; serve as the repository for local reports filed under EPCRA; and direct local EPCRA implementation activities and perform associated outreach functions to increase the awareness and understanding of and compliance with the EPCRA program

**B6****Activity: Storm Water Hotline – Regional Storm Water Collaborative****Date: 01/01/2017 – 12/31/2017**

The Butler County Storm Water District has partnered with the Regional Storm Water Collaborative to create a centralized storm water hotline number (513-946-3999) for Butler, Hamilton and Warren Counties and the newest collaborative member, Northern Kentucky. The Storm Water Hotline provides prompt service to residents in the tri-state region. The automated phone service directs the caller to the appropriate jurisdiction and enables citizens to call 24-hours a day, seven days a week to report any storm water concerns. The hotline number was publicized through the use billboard advertisements. For more information on the Regional Storm Water Collaborative and the non-point source pollution advertising campaign, please visit <http://www.savelocalwaters.org>

**B7****Activity: Website Database and Mapping - Butler County Stream Team****Date: 01/01/2017 - 12/31/2017**

The Butler County Stream Team, a public volunteer stream monitoring group, maintains and continues to develop a website that is capable of displaying the location of all sampling sites and all associated data collected from 2006 – present. In 2015, the site was redesigned with the input from 3 other volunteer monitoring groups in Southwest Ohio. Upon completion, the new site was launched under the name “STREAM BANK”.

The StreamBank website is now a collaborative effort of volunteer stream monitoring groups. The website serves as a central repository for volunteer monitoring data. The initial members are located in Southwest Ohio, but it is hoped that other groups across the state and region will take advantage of this service. This website provides a secure online backup of data and allows participating groups to make their data visible to a wide audience. The goal for the StreamBank Regional Water Quality Database is to provide sound water quality information, collected by volunteers, to the general public, academia, resource agency staff and local decision makers.

StreamBank is a powerful tool that contains interactive graphing & reporting features to customize selections and cross query data sets. As additional groups participate, water quality data can be viewed in connection with other parts of a single watershed and across neighboring watersheds. It is very important that all the data collected is scientifically credible. Great effort is taken to train volunteers to collect and analyze water samples from local surface waters in accordance with strict quality assurance protocols and as part of a project study plan. Participating groups are encouraged to pursue Credible Data status with their respective state and federal agencies.

The analytical data posted on this site was generated to satisfy specific data quality objectives of each group participating in the Regional Water Quality Database. All of the samples were analyzed and collected by trained volunteer water quality monitors. Users of the data must understand potential limitations of the information and its suitability for their intended use. Please refer to the appropriate Project Study Plan and Quality Assurance document for each data set.

Use of the StreamBank system is available to other volunteer monitoring groups that have developed a Project Study Plan and Quality Assurance Project Plan. For more information on creating an account, please contact Bob Lentz, Butler County Storm Water District at 513 - 785 - 4101. For more information, please visit: [www.streambank.info](http://www.streambank.info)

#### **B8**

##### **Activity: Mill Creek Volunteer Water Quality Monitoring Program**

**Date: 01/01/2017 - 12/31/2017**

The Mill Creek Volunteers visit 46 sites throughout the Mill Creek watershed on the second Saturday of every month, March through November. Some water quality monitoring volunteers collect water samples and make stream observations in the field, while others receive the samples at the Upper Mill Creek Water Reclamation Facility laboratory and analyze for six parameters: nitrates, total phosphorus, conductivity, turbidity, pH and E. Coli/coliforms.

#### **B9**

##### **Activity: Illicit Discharge Brochure**

**Date: 10/13/2017**

In an effort to inform the general public of hazards associated with illicit discharges and improper disposal of waste, the Butler County Storm Water District has distributed "Discover Storm Water" and "the Water Story" Project WET Kids in Discovery activity guides to 1,090 children at the Butler County Water Festival.

#### **B10**

##### **Activity: Storm Water District Large Grant Program – St. Clair Township – Salt Barn**

**Date: 01/01/2017 - 12/31/2017**

The District awarded grant money to St. Clair Township for the construction of a new salt storage facility. The old salt barn was structurally deficient and allowed salt to be exposed to the elements. Runoff created from exposed salt poses a hazard to the local drinking water production wells in the area. The new salt storage facility design and operation standards will minimize the possibility of salty runoff into surface waters or infiltration into ground water.

The goal of the Butler County Storm Water Districts Large Grant Program is to fund local projects that advance restoration of local surface waters by improving water quality and or reducing flood risk through activities that support community revitalization and local priorities. District goals include but are not limited to:

- Reducing house and street flooding by improving drainage system
- Change, improve, or restore streams to a more natural design
- Reducing or eliminating sources of non-point source pollution
- Restoring floodplain and/or connecting floodplains
- Stabilizing eroded or undercut creek banks
- Improving habitats for aquatic life
- Enhancing water quality

In general, projects should promote a comprehensive understanding of local water quality issues; identify and support activities that address these issues at the local level; engage, educate and empower communities surrounding the urban water body; and benefit surrounding communities including those that have been adversely impacted by the water pollution issues affecting the urban water body.

#### **B11**

##### **Activity: Storm Water District Large Grant Program – Madison Township – Salt Barn**

**Date: 01/01/2017 - 12/31/2017**

The District awarded grant money to Madison Township for the construction of a new salt storage facility. The old salt barn was in excess of 20 years old and the main support poles were cracked and bowed. Runoff from this salt storage structure runs due south directly toward a water tower and the pumping

station used by Southwest Regional Water District was structurally deficient and allowed salt to be exposed to the elements. Salt poses a hazard to the local drinking water production wells in the area. The new salt storage facility design and operation standards will minimize the possibility of salty runoff into surface waters or infiltration into ground water.

The goal of the Butler County Storm Water Districts Large Grant Program is to fund local projects that advance restoration of local surface waters by improving water quality and or reducing flood risk through activities that support community revitalization and local priorities. District goals include but are not limited to:

- Reducing house and street flooding by improving drainage system
- Change, improve, or restore streams to a more natural design
- Reducing or eliminating sources of non-point source pollution
- Restoring floodplain and/or connecting floodplains
- Stabilizing eroded or undercut creek banks
- Improving habitats for aquatic life
- Enhancing water quality

In general, projects should promote a comprehensive understanding of local water quality issues; identify and support activities that address these issues at the local level; engage, educate and empower communities surrounding the urban water body; and benefit surrounding communities including those that have been adversely impacted by the water pollution issues affecting the urban water body.

#### **B12**

##### **Activity: Rain Garden Installation at Voice of America Park**

**Date: 01/01/2009 - Present**

Installation of the rain garden began in November of 2008. The selection and placement of plants was completed by the end of April 2009. The rain garden is located in a high traffic area directly in front of the "Boat House" facility. The display includes educational signage and is a great example of a residential application for rain gardens. The site continues to be inspected and maintained throughout the year as necessary.

#### **B13**

##### **Activity: Monitor BMP's – Butler County Engineers Office**

**Date: 01/01/2017 - 12/31/2017**

Several BMPs for the Butler County Engineer's Office were designed and installed at the property located at 1921 Fairgrove Avenue in Hamilton, Ohio. The facility improvements include a bioretention area, two oil & grit separators, and a water quality pond. The design of the bioretention area allows for the collection and treatment of storm water runoff from existing paved areas. In addition to providing pollutant removal, the bioretention facility adds aesthetic appeal to a currently bare area. The best management practices are inspected and maintained throughout the year as necessary.

#### **B14**

##### **Activity: P.R.I.D.E. Program Activity Description: Litter Collection and Clean-up**

**Date: 01/01/2017 - 12/31/2017**

The Butler County Sheriff's Roadside Collection litter Program is called PRIDE. The acronym stands for "Providing Responsibilities for Inmates through Duties for the Environment". Led by the litter crew supervisor, inmates from the Resolutions medium security prison collect litter along public rights-of-ways and in parks and, sometimes, assist in the removal of waste from illegal dumpsites.

- PRIDE Crew "common litter" collected in 2017 (in **pounds**): **25,886**
- PRIDE Crew hours worked in 2017: **487 hours**
- PRIDE Crew miles traveled in 2017: **252 miles**

#### **B15**

##### **Activity: Household Hazardous Waste Program**

**Date: 07/01/2017 - 10/30/2017**

Household Hazardous Waste Recycling Events are held weekly from June to October and are sponsored

by Butler County's Solid Waste Management District. The 2017 events resulted in **45.7 tons** of household hazardous waste collected for safe processing, disposal, or recycling. Total number of participants was **1,883**.

#### **B16**

##### **Activity: Curbside Freon Appliance Collection Program**

**Date: 04/01/2017 – 10/30/2017**

Curbside freon appliance collection is sponsored by Butler County's Solid Waste Management District. The 2017 program resulted in the collection of **75.16 tons of freon** containing appliances (847 units) from **869** participating households.

#### **B17**

##### **Activity: Tire Collection at Ross High School**

**Date: 11/04/2017**

Tire collection is sponsored by Butler County's Solid Waste Management District. The November event held at the Ross Township High School resulted in the collection of **96.5 tons** of tires and **388 people** participated.

#### **B18**

##### **Activity: Community Cleanup – Wayne Township**

**Dates: 4/22/2017**

On Saturday, April 22nd, 2017, Wayne Township held the 26th Annual Litter Outing. An event previously ran by local 4H clubs in collaboration with Wayne Township. This year was the inaugural "KEEP WAYNE TWP. BEAUTIFUL". The Township took the reigns and created a community event, with hopes of getting more residents involved. Wayne Township is ecstatic with the support and we're proud to say it was a successful event! Event totals: **31** volunteers; **9.6** miles of road cleaned; **700** lbs. trash collected.

#### **B19**

##### **Activity: River Cleanup – Mill Creek**

**Dates: 9/23/2017**

The Mill Creek Watershed Council and our partners cleaned up the Upper Mill Creek on Saturday, September 23rd. This event was family-friendly and open to all ages. We met at our *Twin Creek Preserve* project. Then we caravanned to cleanup sites throughout the watershed and met back at Twin Creek Preserve for lunch provided by John Morrell/Smithfield. This year **25** volunteers on land and **21** volunteers in canoe collected **0.8 tons** (or 1,600 pounds) of garbage plus **20** tires. Special thanks to our event partners: City of Springdale Public Works, Cincinnati Community ToolBank, Rumpke Waste & Recycling, Smithfield, MetroParks of Butler County, Butler County Soil & Water Conservation District, Butler County Storm Water District, West Chester Township Parks, and Hamilton County Recycling and Solid Waste District.

#### **B20**

##### **Activity: Public Meetings**

**Dates: 01/01/2017 - 12/31/2017**

A total of one hundred thirty one (**131**) people attended the 2017 quarterly public meetings. Since December 2009, the District has foregone lengthy, formal annual meetings and has adopted a format of informal quarterly updates. This change is intended to make meetings more accessible to co-permittees and facilitate the distribution of District information in a timely fashion.

#### **B21**

##### **Activity: Advertising - Billboards**

**Dates: 01/01/2017 - 12/31/2017**

The Butler County Storm Water District conducts an annual outdoor billboard advertising campaign. The boards delivers the messages such as: "Rain Gardens Reduce Runoff", "Storm Drains are not Garbage

Cans”, and “Explore Your Watershed”. The message prompts people to report pollution to the storm water hotline number. Billboards are also used to highlight public involvement activities such as the Clean Sweep of the Great Miami River. Campaign utilized 44 billboards at various times during a six month period (April - September). Average daily traffic count for a single billboard was **6,167**. Campaign utilized **44** billboards at various times during a six month period for a total of **265,200** impressions.

## **B22**

### **Activity: Stream Walks**

**Dates: 01/01/2017 - 12/31/2017**

The Butler Soil and Water Conservation District conducted **11** challenging, yet entertaining, educational stream and/or wetland walks for **494** children and **157** adults. Topics included water quality (chemical, biological, physical attributes) stream ecology, stream attributes, and watershed mapping.