



Sat, Oct 12

is our next sampling date

Reminder to contact [Lynn](mailto:lynn@butlercountystreamteam.org) 513-615-2538 or [Teresa](mailto:teresa@butlercountystreamteam.org) 513-706-8991 if you cannot sample, or if you have any issues while sampling.

Sampling Reminders

- Coolers are in place from 8 am - 10:30 am.
- Please remember to wear your safety vest.
- Please mark the time and date on your labels of when you collected the sample. None of the sample times should be the same unless you are a time traveler :)
- Remember to sign in your samples in the lock box then place your sample in the cooler. Both coolers use the same code.
- Sign your sample into the cooler with the drop off time.
- Remember to grab bottles for the following month.
- If there is not enough water to sample, fill out label saying dry, or too low to sample, then attach to a bottle and place in the cooler.
- **Duplicate samples** - when you sign them into the cooler, put the number "2" next to the sample ID.

Lab Sign Up

You can sign up for a shift at the lab through Doodle.

<https://doodle.com/poll/rfkdvqgt4dz6bbq7>



Jurisdictions within East Fork Mill Creek



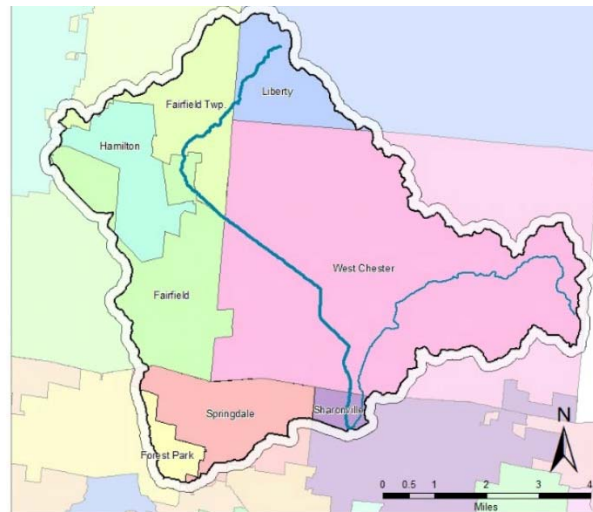
Do you Live In the Mill Creek Watershed?

Stake Holder

Mon, Oct 7

4 - 6 pm

At Butler SWCD, 1802 Princeton Rd,
Hamilton, Oh



The Mill Creek Alliance is seeking input from interested parties about the Upper Mill Creek Watershed. This meeting is important for future grant funding. To be eligible for Ohio

EPA Clean Water Act Section 319 funding, (1) there must be U.S. EPA-approved 9-Element Plan for the HUC-12 subwatershed and (2) the proposed project must be described in the 9-Element Plan. Currently, the East Fork Mill Creek subwatershed lacks a 9-Element Plan and cannot access \$100,000s in federal funding that other communities have acquired.

Residents and other community members, municipal officials, and environmental and planning professionals are invited to come and stay as long as you like between 4 pm - 6 pm to review electronic and print maps and data. In addition to getting your input on potential projects, we'd like your perspective on proposed "Critical Areas" – areas where Ohio EPA monitoring either shows (a) impairment i.e. habitat alteration, hydromodification, silt/sediment or nutrient enrichment; OR (b) areas with healthy waters that need protection from degradation.

Your input is valuable!

Clean Sweep of the Great Miami

Sat, Oct 26 from 9 am - 12 noon

There are lots of locations to choose from:

Franklin, Middletown, Madison Twp, Oxford, Trenton, Liberty Twp, Hamilton, Fairfield, Colerain Twp, and at the mouth of the river in Shawnee Park.

Join us to see what weird and wonderful items that you can find.

We have shirts, gloves, grabbers, and water. We also have patches for boy/girl scouts.



Find a location and sign up online at www.GreatMiamiRiverCleanUp.org

COUNTY



Children's Waterfest

Seeking volunteers

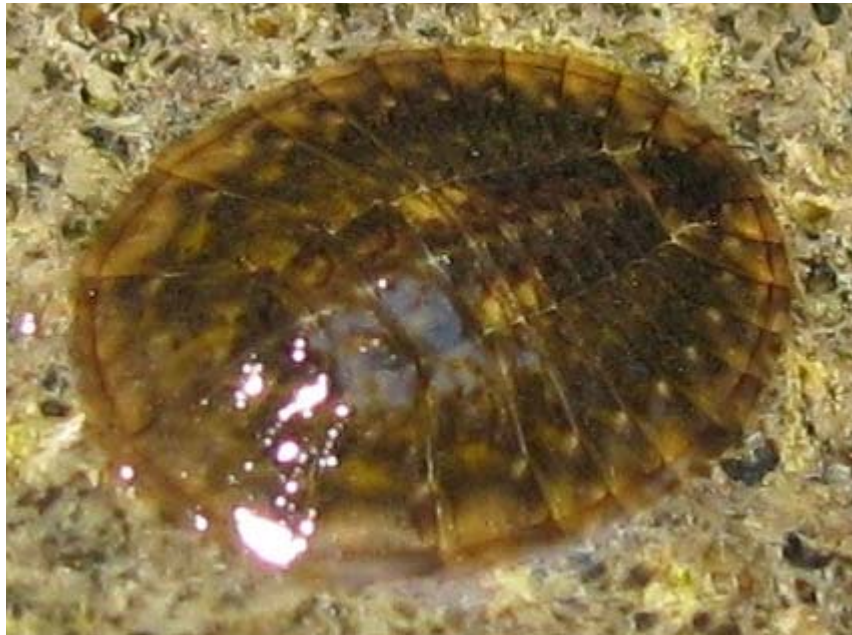
Friday, Oct 11

At Miami Hamilton

Over 1000 elementary kids from around Butler County attend this festival to learn all about water. The festival can't take place without about over 100 volunteers. Every volunteer receives

lunch and a shirt. We also start the day off with some pretty awesome donuts :)

Find Out More: contact Lynn at whitelr@butlercountyohio.org



Macro- Spotlight

Water Penny Larvae/ Beetle

Psephenidae Coleoptera

Water Penny Beetle Larvae are not only very cool looking, but they are a great sign of stream health for biologists. This is due to the fact that water pennies cannot tolerate pollution, high sedimentation, or high amounts of algae and fungi. If water pennies are found, this is an indicator of a very healthy stream.

They are flat, brown, and penny-like in shape and size. If you are looking at their body close-up you can see the parts of their body. On the top side, their segmented abdomen, thorax, and head. Below, their six legs and tiny feather-like gills. The larvae is about ½ inch in size and cling to the undersides of stones on the waterline where water splashes up against them. The larvae eat mostly algae by using rasps on their legs to scrape it off of the rocks.

Water pennies are interesting because, unlike other beetle larvae that are in grub form, water

penny larvae look like pennies. The larvae may take more than a year to mature. When they pupate they do so underwater still attached to a stone or in nearby soil close to the stream. Once they are beetles they emerge from the water, find a mate, and eggs are laid again on an underwater stone. Not much else is known about the beetles other than they live near the stream on vegetation, and don't live much longer than to mate.

Water & Other News

Gov. DeWine orders testing for 'forever chemicals' in Ohio's drinking water

<https://www.dispatch.com/news/20190927/gov-dewine-orders-testing-for-forever-chemicals-in-ohios-drinking-water>

Proposal would reduce water samples monitored in Ohio's rivers, streams

<https://www.dispatch.com/news/20190811/proposal-would-reduce-water-samples-monitored-in-ohios-rivers-streams>

New imaging technique reveals how dragonfly wings tear bacteria apart

<https://newatlas.com/dragonfly-nanostructures-anitbacterial-properties/53331/>

Miami Conservancy District: You can never be too prepared

<https://mcdwater.blog/>



Copyright © 2019 Butler Country Stream Team, All rights reserved.

You are receiving this email because you have provided Butler County Stream Team with your email.

Our mailing address is:

Butler Country Stream Team
1802 Princeton Rd
Hamilton, OH 45011

[Add us to your address book](#)

Want to change how you receive these emails?