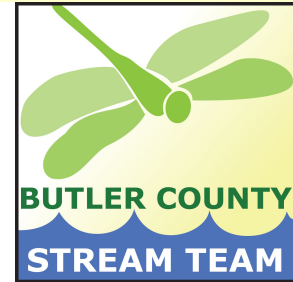


Email not displaying correctly? View it in your browser.

Butler County Stream Team

March 2017

Next Sampling Day - March 11



If you cannot sample, contact Lynn at 513-615-2538 , or contact Teresa at 513-785-4142 or her cell at 513-706-8991.

In this Issue

- [Save the Date](#)
- [Duplicate Samples](#)
- [Lab Sign up](#)
- [Sampling next year](#)
- [River Cleanup](#)
- [Asian Carp](#)
- [Invasive Plant](#)
- [Milkweed Pod request](#)
- [Water News](#)
- [Sampling Reminders](#)
- [Events](#)
- [Webcasts](#)

New Drop off Cooler Arrangement

Reminder that there are now two coolers at each dropoff location. The new box will have the

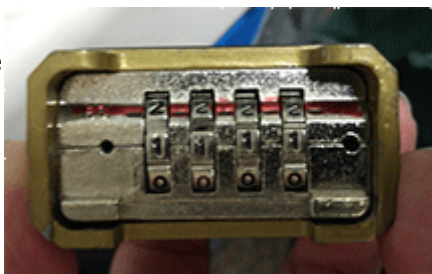


signin sheet, clean sample bottles, etc in it. The original cooler will now only be used for placing the samples in. This is all in an effort of keeping the samples cool enough.

The big thing to remember is that we couldn't use the same lock for the two different boxes. See pics to the right.

The first pic is the lock on the dry box. Not the numbers line up along the center.

This padlock is spring loaded



Stream Team Sampling Dates

Mar 11
Apr 8
May 13
June 10
July 8
Aug 12
Sept 9
Oct 14
Nov 11

Stream Team Volunteer Receives State Education Award



This year, at the Ohio Federation Conservation Partnership meeting in Columbus, Ohio, one of Butler County's teachers was recognized for her conservation education efforts. Suellen Albert, a teacher at Ridgeway Elementary in Hamilton, received the Educator of the Year Award for Elementary Educators. Suellen has been sampling in Hamilton the last few years. Pictured is Suellen with Education Specialist Lynn White. Congratulations Suellen!!

From Summits to Sustainability-- Reaching for High Places, Personally and Professionally

Apr 12, 2017, 7:00pm - 8:45pm

Deadline: Wednesday, April 5, 2017

Cost: FREE (Registration is required)

so you will have to push it to get it to open.
The second pic is the usual cooler and the numbers line up at the top.

No I didn't use the combination in these pics and that is because we have hundreds of people that receive this email and we can only give the combo out to those that are trained sample collectors. If you forgot the code call Lynn at 513-615-2538.

Lab Sign Up

Remember, if you are signed up for lab and find out you cannot make it. Please remove your name from the [doodle sign up](#), so that someone else can take your place. We limit the signup to avoid too many bodies in the lab and not enough work.

Reminder that the lab is now in Shideler Hall at Miami. We are in room 7 which is in the basement. [Map of Shideler's location](#)

Parking: Two choices:

1. Around Cook Field across from Shideler if you use a parking pass (if you are signed up for lab, [contact Teresa for a pass](#))
2. Or, pay to park in the parking garage found on E. Withrow street behind Pearson Hall (our old lab location)

Other Events

We are trying to come up with other events/training that might interest you, such as our annual canoe trip, potlucks, etc. If you have any suggestions [please let Lynn know](#).

Stream Biology Class/ Biological Monitoring

Saturday, May 20 from 9 am - 12 noon

If you would like to learn more about biological monitoring of our streams, we are planning to head to Indian Creek Preserve ([map](#)) on Saturday, May 20.

After a brief background on streams, water quality, and the stream creatures, we will enter the creek to conduct a stream sample. This biological sample will help us to assess the health of the water. Interested attendees can become biological samplers for Stream Team.

Please wear closed toe footwear that can get wet.
Please be aware this entire class will be held

Location: The Ohio Union, Archie Griffin Grand Ballroom, 1739 N. High Street, Columbus, OH 43210

Contact: Christy McLeod, [614-292-3371](tel:614-292-3371), mcleod.53@osu.edu

The largest consumer co-op in the United States with over 6 million active members, REI (Recreational Equipment, Inc.) was founded in 1938 in Seattle. The outdoor retail co-op is dedicated to inspiring, educating and outfitting its members and the community for a lifetime of outdoor adventure and stewardship. It offers its own line of gear and apparel, in addition to products from other brands for the broad range of outdoor pursuits. REI leads a robust marketing effort to get people outdoors, including closing its stores on Black Friday and encouraging all Americans to spend the day out in nature. REI is passionate about the outdoors and committed to promoting environmental stewardship and increasing access to outdoor recreation. Its stewardship/sustainability efforts are focused on product sustainability, sustainable operations, creating access to the outdoors and encouraging sustainable tourism, and assisting with community stewardship projects and volunteerism. REI's sustainability and stewardship initiatives are led by Vikram Sahney, 38, Vice President of Sustainability. At OSU, Sahney will share how he, and hopefully students and others, finds ways to align his passions and profession to reach ever higher levels of sustainability.

outdoors rain or shine. There are no shelters in this portion of the park. There is a restroom and a few picnic tables.

Pre-Registration is required by May 18 as I need to get all of the resources together. To register, please contact Lynn at Butler SWCD at 513-887-3720 or email your name to ButlerSWCD@ButlerCountyOhio.org.

Tree Sale

The 2017 Tree Sale is now taking place. Please read below about the changes that have been made to the sale.

Order Deadline: March 17, 2017 Online only at www.warrenswcd.com/tree-sale.html

Pick-Up Dates/Times:

- Thursday, April 6 from noon- 6 pm
- Friday, April 7 from 7 am - 6 pm
- Saturday, April 8 from 9 am - 11 am

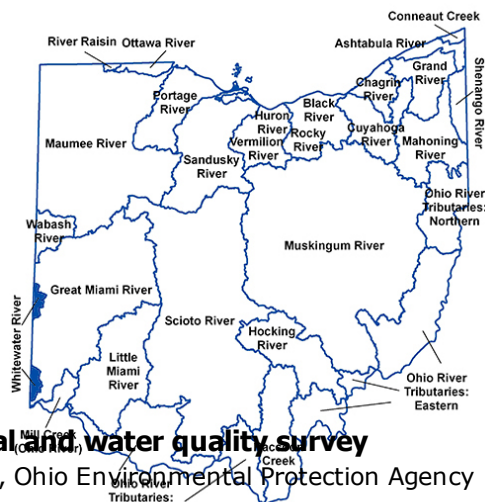
Pick-Up Location: Butler County Fairgrounds, Farm Zone Building. The Fair Grounds are located at 1715 Fairgrove Ave, Hamilton, OH 45011. This is the intersection of Fair Ave and Rt 4 in Hamilton.

In order to keep the tree sale running as efficiently as possible, Butler SWCD partners with Warren Co. SWCD for the tree sale. Please note that all online ordering and paying for trees will be done through the Warren SWCD website at

www.warrenswcd.com/tree-sale. Although Warren SWCD will be handling all of the ordering, you will still pick up your trees from Butler SWCD at the Butler County Fairgrounds. Please call **Warren SWCD at 513-695-1337** with any questions or if you need help with the online process.

This year we are also making live stakes available for purchase! Live stakes are cuttings from a tree that can be planted directly into moist soil in the early spring. These stakes are recommended to help stabilize areas of the stream bank with erosion issues.

Whitewater River Watershed



Biological and water quality survey

Each year, Ohio Environmental Protection Agency (Ohio EPA) collects data from streams and rivers throughout the state. In 2017, Ohio EPA will be sampling the Whitewater River watershed in Darke, Preble, Butler and Hamilton counties (see dark areas along Indiana border on diagram). During this survey, Ohio EPA will collect chemical samples, examine and count fish and aquatic insects, and take measurements of the stream. The physical, biological and chemical data will help determine water quality in the streams and identify areas in need of improvement. When completed, Ohio EPA will publish the findings in a subsequent report.

While some sampling work has been completed in the watershed, this will be the first comprehensive water quality and biological study of the entire watershed conducted by Ohio EPA.

We may need your help. If you're a stream side landowner within the Whitewater River watershed, we might be asking for permission to access a stream through your property. All Ohio EPA staff carry photo identification. If you think your property has good access to the Whitewater River or other tributaries (connecting streams) within the watershed, you can contact Michelle Waller at (937) 285-6028 or Drew Phillips at (614) 836-8773. Thank you for your assistance!

Sampling Reminders

- Remember to sign in your samples in the lock box then place your sample in the cooler.
- Please mark the time and date on your labels of when you collected the sample. None of the sample times should be the same unless you are a time traveler
- Sign your sample into the cooler with the drop off time.

- Don't put the samples in the bag with the clean bottles
- Keep the cooler lid closed as much as possible
- Provide labels that say dry, or too low to sample, if that is the case.
- Remember the cooler locks are different from each other. See info above.
- **Duplicate samples** - when you sign them into the cooler, put the number "2" next to the sample ID.
- **Duplicate samples** - use the month that is on the label. Remember to talk to Teresa if you will be out of town that month and she can switch dates for you.

Butler County Stream Team Monthly Newsletter

[Unsubscribe](#) from this list.

Our mailing address is: 102 Boyd Hall, Institute of Environmental Sciences, Miami University, Oxford, OH 45056

Phone: 513-785-6666

E-mail: whitelr@butlercountyohio.org

Website: www.butlercountystreamteam.org

Copyright (C) 2015 Butler County Stream Team All rights reserved.

[Forward](#) this email to a friend

[Update your profile](#)

MailChimp